

HARMONY II



HARMONY II

OVERVIEW.

The 58m (189ft) HARMONY II is ideally configured for a sociable holiday on the water with a big group of friends or a large extended family. Designed to host up to 16 guests in eight cabins with eight crew at your service, this classic mid-20th century vessel has been brought up to date with a full refit just three years ago. She is offered for charter in sparkling condition with full air conditioning and a wi-fi internet connection throughout.

Her key outside features include two large, separate social spaces on the top deck. There's a jacuzzi, seats and sunbeds on the Portuguese bridge, facing forward, with a graceful sweep of steps leading down to another area for guests on the foredeck. And there's a very spacious sundeck facing aft, with awnings above if required. One level down on the main deck aft is a large, comfortable lounge with sofas, armchairs and a big dining table, all in ample shade.

She also has an aft cockpit on the lower deck with direct access to the extended bathing platform, which is an excellent launch pad for watersports – there's a pair of jetskis and some paddleboards as well as inflatable tows for her extra-large RIB tender, which is ideal to take your whole group ashore for a party on a remote beach, or for swift, comfortable transport into harbour for shopping or dining trips.

Her inside spaces include a piano bar, a cosy snug, a dining room and a spacious lounge, plus a cinema room and a casino with a roulette table and armchairs on the lower deck.

The master cabin has a lounge area and a study desk, great sea views through large picture windows and a king size bed. The other guest cabins include large doubles with queen size beds, desks and chairs, standard doubles and twins. Each cabin has its own private en suite bathroom.

With acres of space inside and out, plus a wide range of facilities for guests to enjoy, a private charter on HARMONY II is a great way to cruise.

Key features

Recently refitted

A crew with local expertise

Shaded deck dining and deck areas

Jacuzzi on bridge deck forward

HARMONY II

Aerial view



Aerial view



Foredeck



Main deck aft



BURGESS

Discover the difference.
burgessyachts.com



HARMONY II

Main deck aft dining



Main deck lounge



Cinema room



Master cabin



HARMONY II

Double cabin



Twin cabin



Lifestyle



BURGESS

Discover the difference.
burgessyachts.com



HARMONY II

SPECIFICATION.



Length
57.7m (189.3ft)



Built
**1955 (refitted 2022), Jadranska Linjska
Plovidba, Croatia**



Beam
8.7m (28.5ft)



Draft
2.9m (11.2ft)



Gross tonnage
686



Cruising speed
9 knots



Maximum speed
10 knots



Fuel consumption at cruising speed
400 litres per hour



Engines
2 x 680hp MAN



Guests
16



No. of guest cabins
6 (5 x double, 1 x twin)

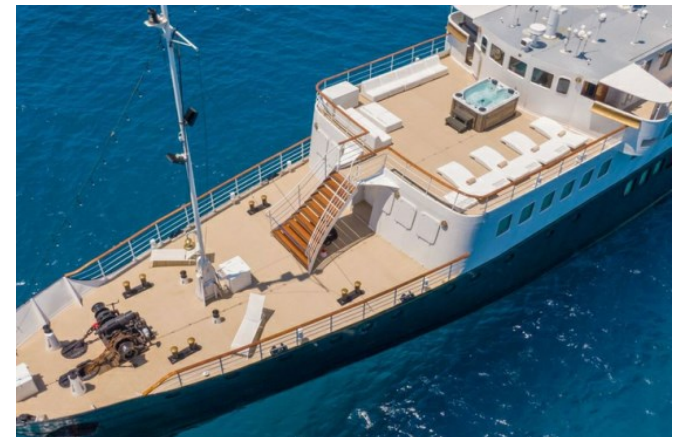


Crew
8

Note

Fully licensed for charters in Spanish waters. Not available for charter to EU residents while in EU waters. Not available for charter to US residents while in US waters.

[View yacht on website](#)



HARMONY II

TENDERS & TOYS



1 x Tender



1 x SeaBob



2 x Stand up paddleboards



Snorkelling gear

BURGESS

WORLD CLASS. WORLD WIDE.

London +44 20 7766 4300	Monaco +377 97 97 81 21	New York +1 212 223 0410	Miami +1 305 672 0150	Singapore +65 9665 8990	Beverly Hills +1 310 424 5112	Palma +34 971 495 413	Athens +30 210 967 1661
Dubai +971 4 425 5874	Phuket +66 7623 9739	Hong Kong +852 6496 2094	Tokyo +81 46 738 8612	Sydney +61 499 945 557	Mumbai +91 98211 67253	Shanghai +86 159 0162 1898	Rio de Janeiro +55 21 2553-3238
Aspen +1 970 710 2294							

Advertising of these vessel(s) in printed publications, on the internet or in any other medium is not permitted without prior written permission from Burgess. All particulars are given in good faith and are believed correct but they cannot be guaranteed.

Last updated: 02 April 2025