

# HANA

---



HANA

# APERÇU.

HANA is a graceful and remarkably roomy 43-metre yacht – her interior has the spacious feel of a 50-metre vessel. She has a splendid variety of outside spaces too – on four different levels including the large, air-conditioned gym that opens directly onto her swim platform, so when you've finished your workout you can plunge straight into the sea.

Her tri-deck guest accommodation is designed for 10 or 11 guests, with three double cabins and a twin with a pullman berth as well as the full-beam master suite at the forward end of the main deck, which has its own separate study and private open-air space. There's a highly experienced nine-strong crew on board to take care of all your needs, led by a longstanding captain.

She's an excellent choice of charter yacht for a family holiday with a relaxed, welcoming feel. There's a good choice of large sociable spaces where everyone can enjoy being together, but also plenty of scope for people to spread out, find a private nook and do their own thing. She's an official RYA watersports training centre with qualified instructors on board, and the wide range of water toys in her inventory includes a good choice of activities and equipment for all ages.

She's also an exceptional party boat with a vast sundeck that's ideal for hosting events. The sunpads around the jacuzzi are a brilliant open-air social space and there's also a sit-up bar, a versatile area of modular seating, two big C-shaped sofas and some sun loungers, too.

One level down, there's a large outdoor dining space in full shade and a comfortable lounge area for sundowners on the upper aft deck and a seating area in front of the bridge, nicely separate from the other guest areas. The main deck aft is a spacious lounge with sofas in both sun and shade, so in total there are five different outside spaces available for a big gathering.

Her interior style is contemporary-classic, with a very high standard of finish throughout. The main deck saloon is a roomy and welcoming sitting room with a partially separate space for formal dining. The upper saloon serves a dual purpose as a smart-casual cocktail bar and family TV room.

The master suite is a tranquil haven, The office provides a buffer zone between the main cabin and the rest of the yacht, as well as a useful place to deal with any work that can't wait. There's a private outdoor terrace on one side of the cabin, and an opulent marble bathroom.

## Principales caractéristiques

---

Recently refitted

---

Private master balcony

---

Fully equipped gym

---

Jacuzzi on the sun deck

---

Zero speed stabilisers to reduce any rolling motion while at anchor

---



HANA

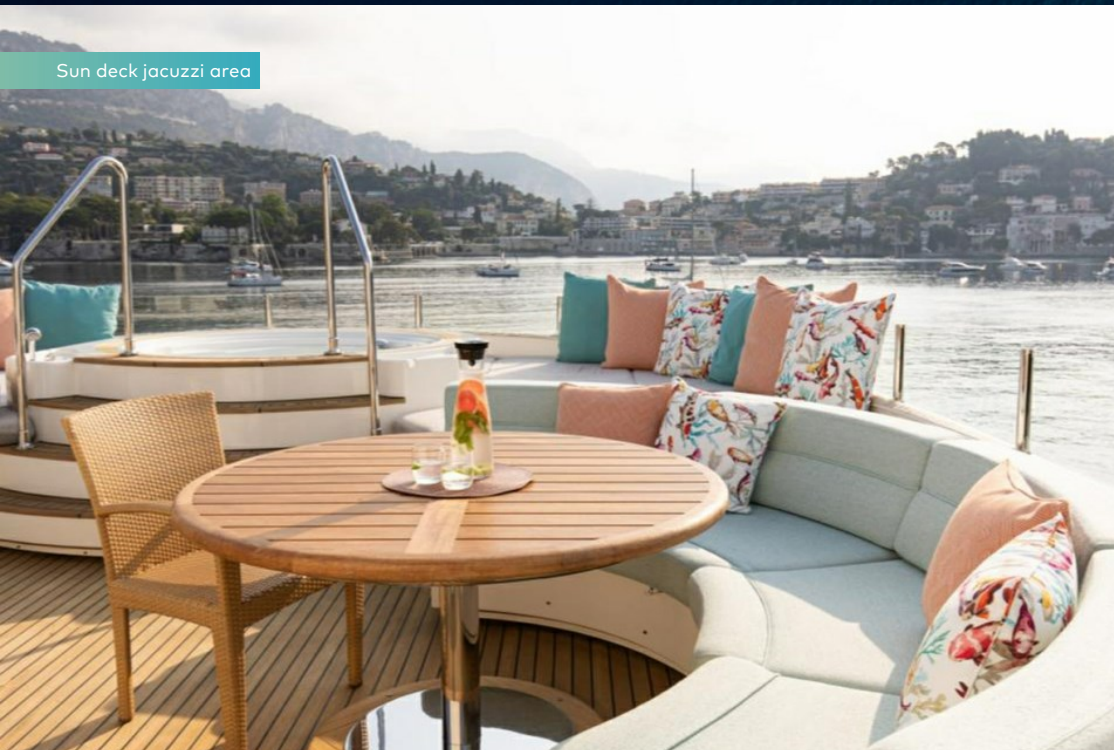
Aerial view



Sun deck forward



Sun deck jacuzzi area



Sun deck aft



BURGESS

Discover the difference.  
burgessyachts.com





HANA

Sun deck lounging area



Upper deck aft



Main deck aft



Swimming platform



BURGESS

Discover the difference.  
[burgessyachts.com](http://burgessyachts.com)





HANA

Foredeck



Main deck lounge



Main deck dining area



Sky lounge



BURGESS

Discover the difference.  
[burgessyachts.com](http://burgessyachts.com)





HANA

Master cabin



Master cabin



Master cabin study



Double cabin





HANA

Double cabin



Twin cabin



Watertoys



Watertoys





HANA

Watertoys



Cruising



BURGESS

Discover the difference.  
burgessyachts.com





HANA

# SPÉCIFICATIONS.



Longueur  
**42,6m**



Chantier  
**2008 (refitted 2019), CRN Ancona, Italy**



Designer d'intérieur  
**Zucon International Project/Laura Pomponi**



Largeur  
**8,7m**



Tirant d'eau  
**2,4m**



Tonnage brut  
**453**



Vitesse de croisière  
**10 knots**



Vitesse maximale  
**13 knots**



Consommation de carburant en vitesse de croisière  
**220 litres par heure**



Moteurs  
**2 x 1 399hp Caterpillar**



Invités  
**11**

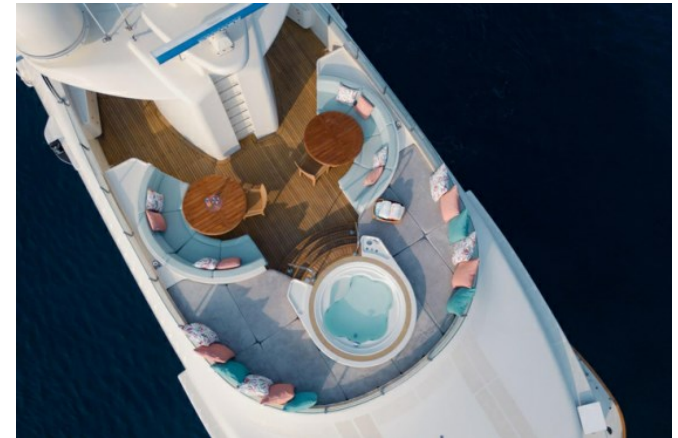


Nb de cabines invités  
**5 (4 x double, 1 x twin, 1 x additional berths)**



Équipage  
**10**

[Voir le yacht sur le site](#)





## Annexes & jeux nautiques

---



2 x Tenders



1 x Deck jacuzzi



Trampoline



RYA training centre for jetskis  
& waverunners



1 x Waverunner



1 x Stand up jetski



2 x SeaBobs



1 x eFoil



2 x Stand up paddleboards



Wakeboard



Kneeboard



Waterskis



Inflatable tows



Snorkelling gear



# Remise en forme & bien-être

---



Free weights



Jump ropes



Resistance bands



Training bench

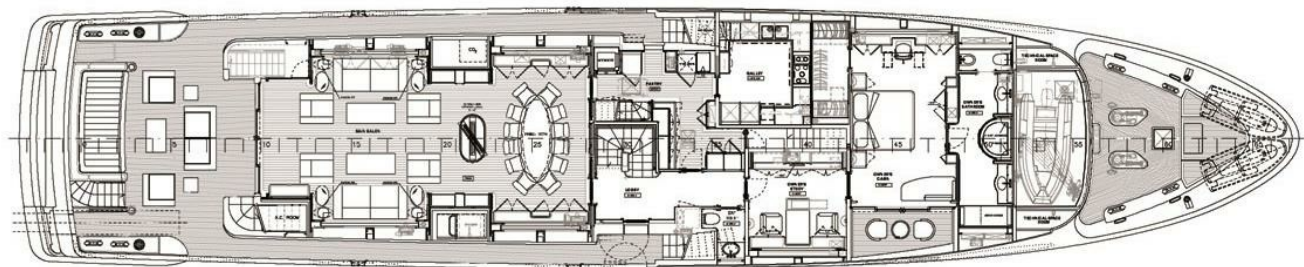


Treadmill

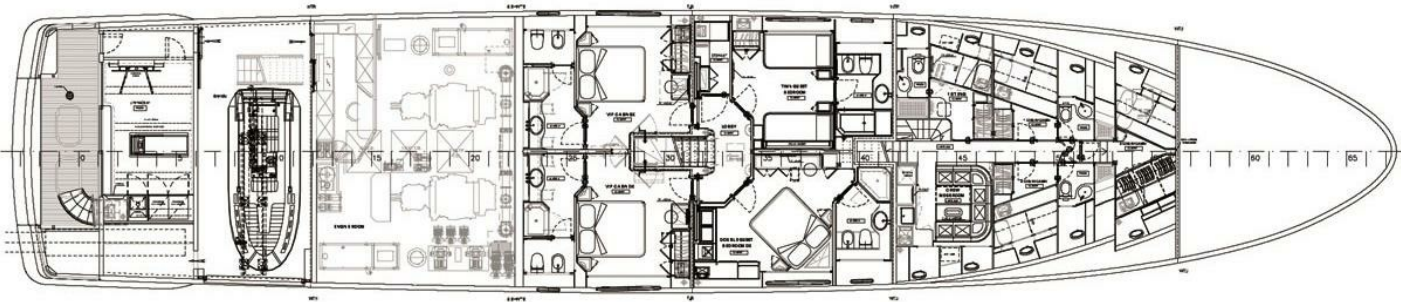


Yoga mats











# BURGESS

# WORLD CLASS. WORLD WIDE.

London	Monaco	New York	Miami	Singapore	Beverly Hills	Palma	Athens
+44 20 7766 4300	+377 97 97 81 21	+1 212 223 0410	+1 305 672 0150	+65 9665 8990	+1 310 424 5112	+34 971 495 413	+30 210 967 1661
Dubai	Phuket	Hong Kong	Tokyo	Sydney	Mumbai	Shanghai	
+971 4 425 5874	+66 7623 9739	+852 6496 2094	+81 46 738 8612	+61 499 945 557	+91 98211 67253	+86 187 0898 6800	

La publicité de ce(s) navire(s) dans des publications imprimées, sur Internet ou sur tout autre support n'est pas autorisée sans l'autorisation écrite préalable de Burgess.  
Toutes les informations sont données de bonne foi et sont considérées comme exactes, mais elles ne peuvent être garanties.

Dernière mise à jour : 30 avril 2024