

GIGIA



GIGIA

SPECIFICATIONS.



Prix demandé
EUR 169 000 000



Chantier
2017 (refitted 2024), Lurssen-Werft, Germany



Longueur
85m



Largeur
14,8m



Tirant d'eau
3,9m



Tonnage brut
2 851



Vitesse de croisière
14 knots



Vitesse maximale
17 knots



Autonomie
7 500 nm at 14 knots



Pavillon
Cayman Islands



Position
West Mediterranean



Classe
**Det Norske Veritas (DNV) GL + 100A5
Passenger Yacht + MC AUT (PYC)**



Designer extérieur
Winch Design



Designer d'intérieur
Winch Design



Construction
Hull - Steel, Superstructure - Aluminium



Équipage
27



Invités
20



Cabines
10 (10 × double)



Moteurs
2 × 2 680hp MTU



3



Propulsion
Twin screw diesel yacht

Note

Not available for sale to US residents while in US waters.

[Voir le yacht sur le site](#)



GIGIA

At anchor



At anchor



Beach club



Main deck aft



BURGESS

Discover the difference.
burgessyachts.com



GIGIA

Main deck aft



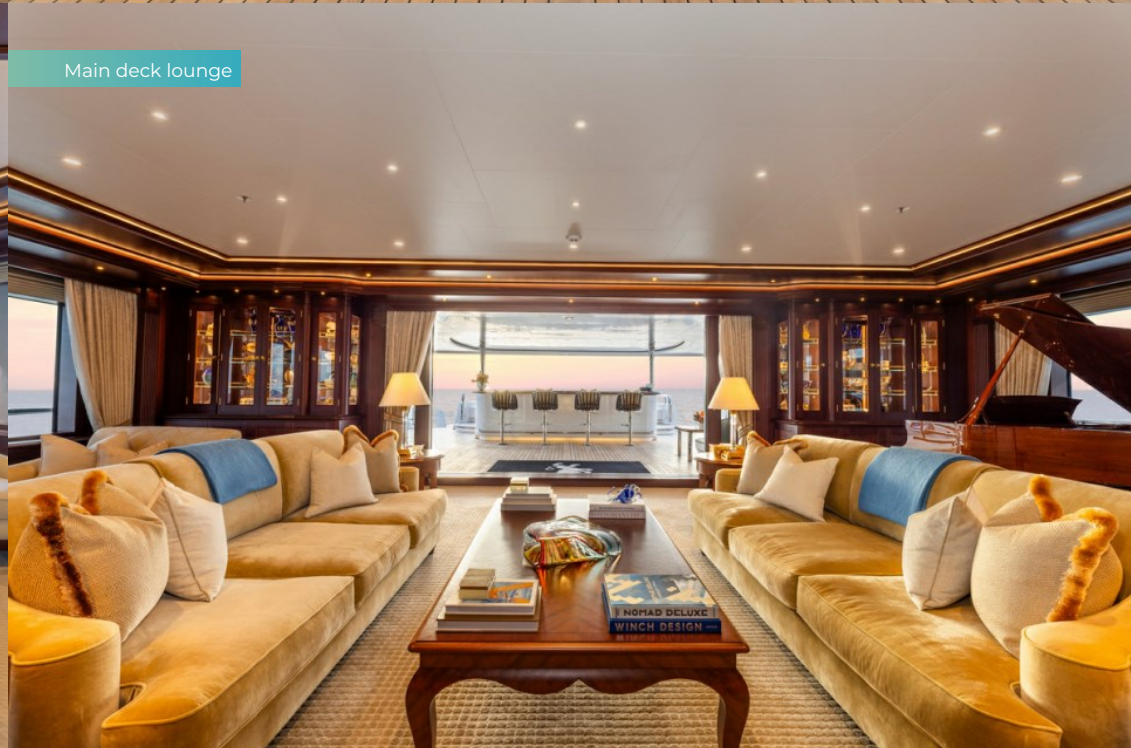
Main deck aft



Main deck lounge



Main deck lounge



BURGESS

Discover the difference.
burgessyachts.com



GIGIA

Main deck lounge



Main deck dining area



Owner's suite



Owner's suite



BURGESS

Discover the difference.
burgessyachts.com



GIGIA

Owner's walk-in wardrobe



Owner's bathroom 'her' en suite



Owner's walk-in wardrobe



Owner's suite his shower room



BURGESS

Discover the difference.
burgessyachts.com



GIGIA

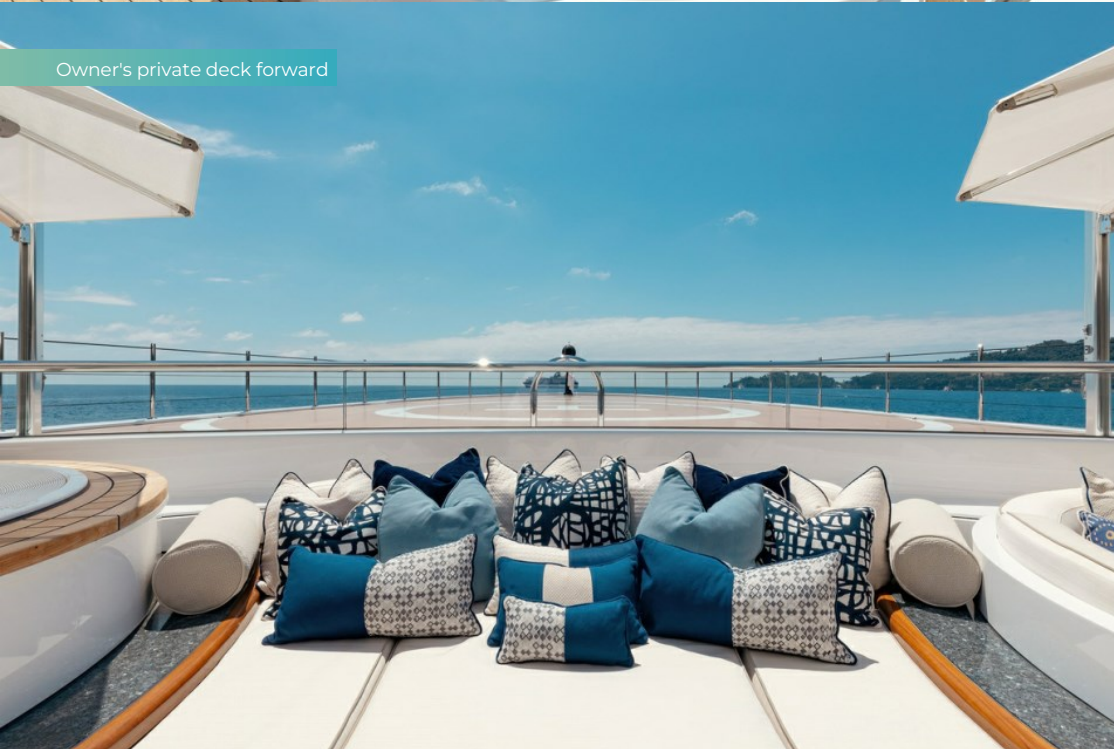
Owner's private deck forward



Owner's private deck forward



Owner's private deck forward



Helicopter pad



BURGESS

Discover the difference.
burgessyachts.com



GIGIA

VIP cabin #1



VIP bathroom en suite



Lower deck double cabin



Lower deck double cabin en suite



BURGESS

Discover the difference.
burgessyachts.com



GIGIA

Twin cabin



Owner's deck lounge bar



Owner's deck lounge



Owner's deck lounge



BURGESS

Discover the difference.
burgessyachts.com



GIGIA

Owner's deck lounge



Owner's deck lounge



Owner's deck lounge



Owner's deck aft



BURGESS

Discover the difference.
burgessyachts.com



GIGIA

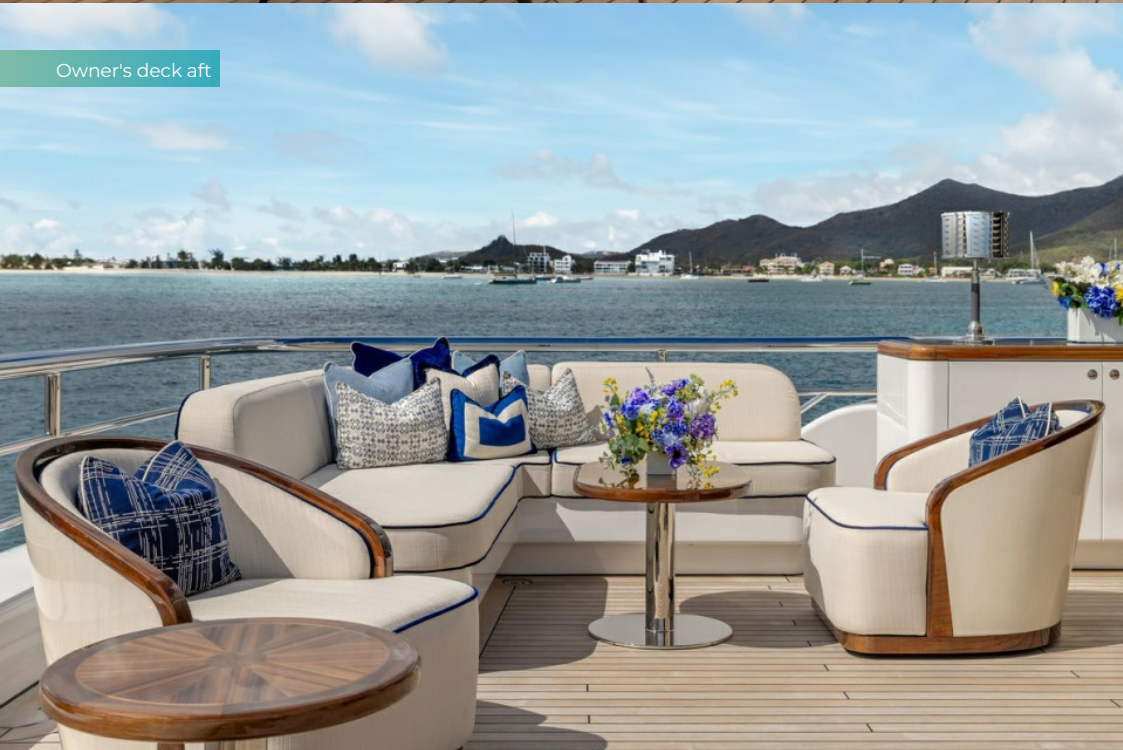
Owner's deck aft



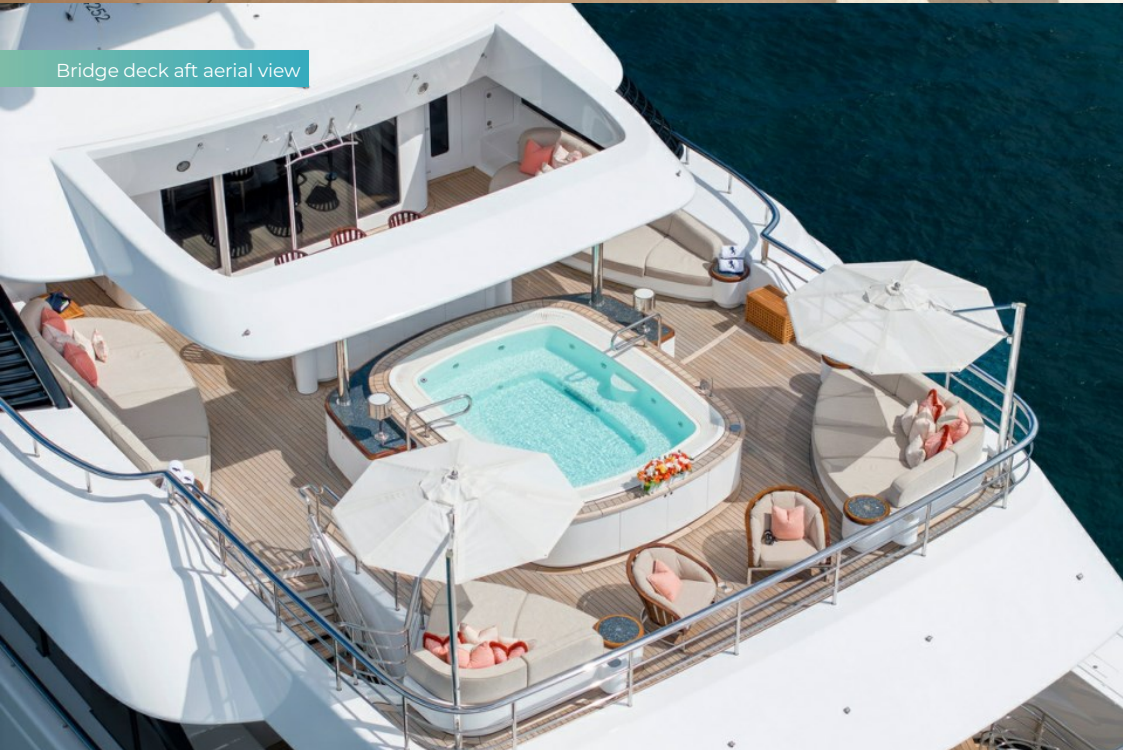
Owner's deck aft



Owner's deck aft



Bridge deck aft aerial view



BURGESS

Discover the difference.
burgessyachts.com



GIGIA

Bridge deck aft



Bridge deck aft



Bridge deck aft



Bridge deck aft



BURGESS

Discover the difference.
burgessyachts.com



GIGIA

Bridge deck aft



Bridge deck gym



Sun deck



Sun deck



BURGESS

Discover the difference.
burgessyachts.com



GIGIA

Sun deck



Sun deck



Sun deck aerial view



Swim platform



BURGESS

Discover the difference.
burgessyachts.com



GIGIA

Beach club entrance



Beach club



Beach club



Beach club



BURGESS

Discover the difference.
burgessyachts.com



GIGIA

Lower deck beauty salon



Beauty salon



Massage room



Lower deck spa



BURGESS

Discover the difference.
burgessyachts.com



GIGIA

Dry sauna



Lower deck spa



Engine room



Engine room



GIGIA

Swim platform



Sea Stairs



Aerial view of aft decks



At anchor



GIGIA

Aerial view



BURGESS

Discover the difference.
burgessyachts.com



GIGIA

APERÇU.

Built to the Passenger Yacht Code, the magnificent 85m (278.8ft) GIGIA blends the expertise of two iconic names in the superyacht world: Lürssen shipyard and Winch Design. With its flowing exterior lines, a meticulously designed classic American interior, and a volume exceeding 2,850GT, this yacht redefines luxury yachting on an extraordinary scale.

From the expansive bathing platform with hydraulic sea steps and lounging areas on either side, to the beach club and spectacular spa area, GIGIA makes an unforgettable first impression. Every inch of her layout has been thoughtfully designed, with spacious guest accommodations and deck spaces that seamlessly connect and flow together.

GIGIA can host 20 guests across 10 lavish and spacious cabins, including the owner's suite, two VIP double suites, and seven additional double/twin suites. Privacy is paramount, with an entire deck dedicated to the owner, featuring a lounge, dining area, terrace, and private jacuzzi. The owner's suite offers sweeping panoramic views forward, his and hers bathrooms, a walk-in wardrobe, a dressing room, and its own private terrace. For entertaining, GIGIA is brimming with social spaces, including a vast main deck lounge with a grand piano and an expansive formal dining room. The exterior bridge deck aft is a favorite among guests, with a large jacuzzi pool, sit-up bar, and generous sun pads for relaxation.

A highly successful charter yacht, GIGIA is filled with an array of guest amenities designed to cater to all interests. Wellness and fitness are at the forefront, with a fully equipped gym, multipool spa, steam room, sauna, plunge pool, dedicated massage and treatment room, and a hair salon. Additional features include a foredeck helipad suitable for an H135 or equivalent, four Quantum stabilizers for comfort at anchor and underway, and a dynamic positioning system that allows her to avoid anchoring in environmentally sensitive areas.

GIGIA offers ample storage for tenders and toys in two spacious garages on the main deck. She comes equipped with two 9.6m Yachtwerft Meyer tenders, one open and one limousine. Powered by twin 2,680hp MTU diesel engines, GIGIA reaches a top speed of 17 knots, cruises at 14 knots, and boasts a transoceanic range of 7,500nm. Don't let this extremely rare opportunity to own a true Northern European masterpiece pass you by!

Principales caractéristiques

Proven world class build team: Lürssen Shipyard and Winch Design

Private owner's deck

Accommodation for 20 guests in 10 cabins (private owner's suite with secluded exterior deck, six double cabins and three twin cabins)

Guest sauna, steam room, and beauty salon

Massage and treatment room

Gym and elevator

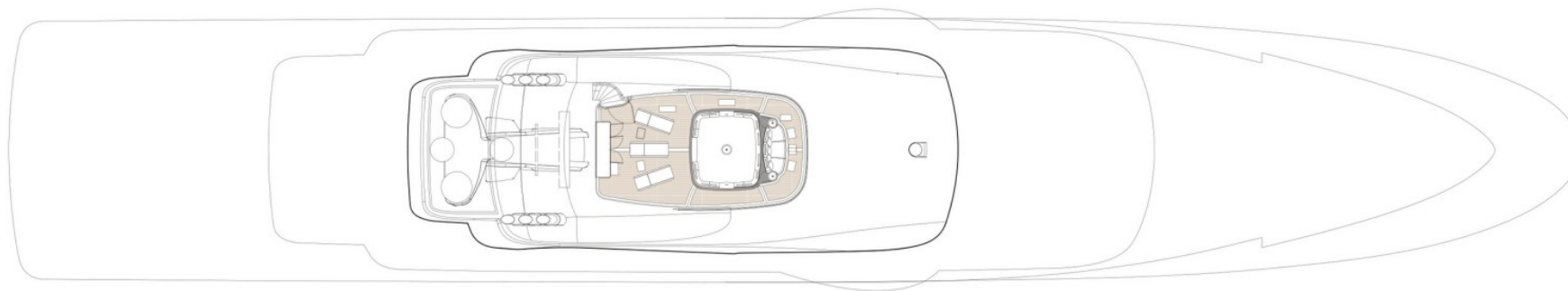
Range of 7,500nm

Helideck for H135 or similar

Annexes

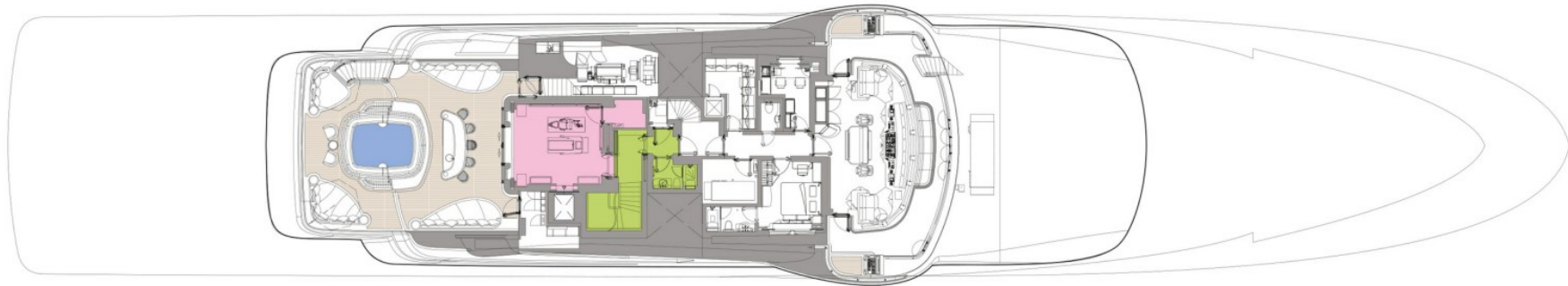
9m Yachtwerft Meyer Silverline limousine tender with 2 x Volvo 220hp engines, 9m Yachtwerft Meyer Open tender with 1 x Volvo D6 370hp Aquamatic stern drive.

SUN DECK



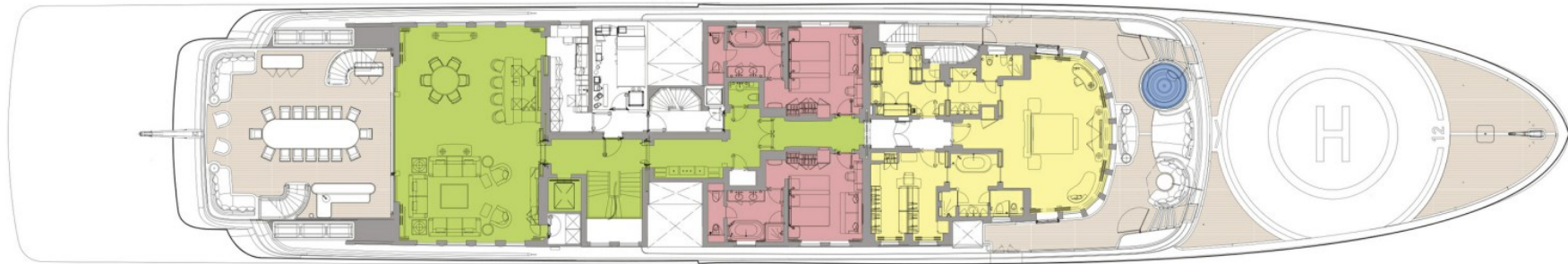
■ GUEST AREAS ■ MASTER SUITE ■ VIP SUITES ■ GUEST CABINS ■ GYM ■ MASSAGE SUITE ■ BEAUTY SALON ■ SPA ■ JACUZZI

BRIDGE DECK



 GUEST AREAS  MASTER SUITE  VIP SUITES  GUEST CABINS  GYM  MASSAGE SUITE  BEAUTY SALON  SPA  JACUZZI

OWNER'S DECK



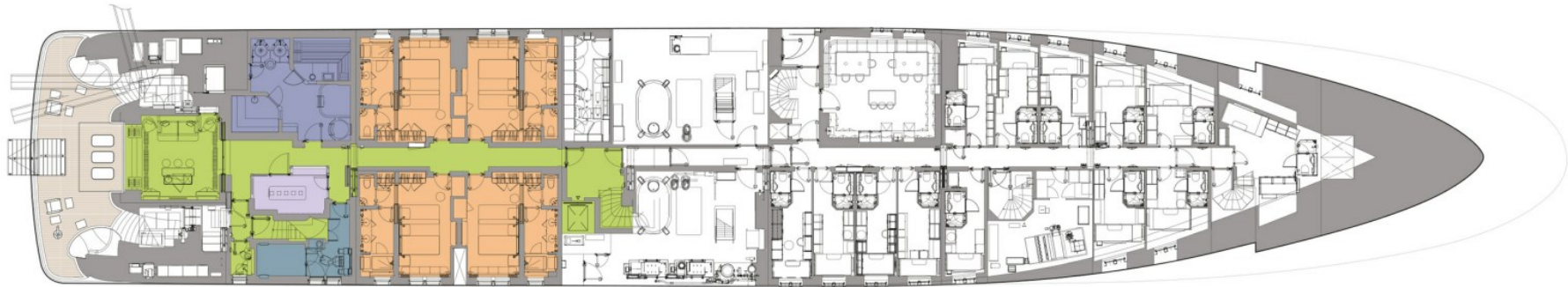
■ GUEST AREAS ■ MASTER SUITE ■ VIP SUITES ■ GUEST CABINS ■ GYM ■ MASSAGE SUITE ■ BEAUTY SALON ■ SPA ■ JACUZZI

MAIN DECK



 GUEST AREAS  MASTER SUITE  VIP SUITES  GUEST CABINS  GYM  MASSAGE SUITE  BEAUTY SALON  SPA  JACUZZI

LOWER DECK

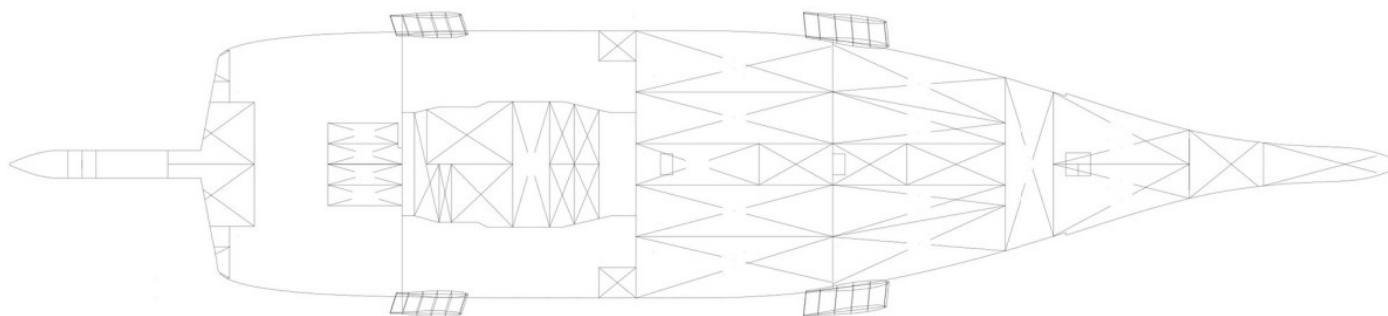


 GUEST AREAS  MASTER SUITE  VIP SUITES  GUEST CABINS  GYM  MASSAGE SUITE  BEAUTY SALON  SPA  JACUZZI

TANK DECK



DOUBLE BOTTOM



BURGESS

WORLD CLASS. WORLD WIDE.

London +44 20 7766 4300	Monaco +377 97 97 81 21	New York +1 212 223 0410	Miami +1 305 672 0150	Singapore +65 9665 8990	Beverly Hills +1 310 424 5112	Palma +34 971 495 413	Athens +30 210 967 1661
Dubai +971 4 425 5874	Phuket +66 7623 9739	Hong Kong +852 6496 2094	Tokyo +81 46 738 8612	Sydney +61 499 945 557	Mumbai +91 98211 67253	Shanghai +86 159 0162 1898	Rio de Janeiro +55 21 2553-3238
Aspen +1 970 710 2294							

La publicité de ce(s) navire(s) dans des publications imprimées, sur Internet ou sur tout autre support n'est pas autorisée sans l'autorisation écrite préalable de Burgess.
Toutes les informations sont données de bonne foi et sont considérées comme exactes, mais elles ne peuvent être garanties.

Dernière mise à jour : 18 juillet 2025