

# GIA SENA

---



GIA SENA

# APERÇU.

**The GIA SENA is a Princess 85 Flybridge Motor yacht built in 2009, upgraded in 2018.**

An extensive single-level main deck provides ample entertainment space with a flexible kitchen layout. Three separate seating areas ensure the utmost privacy for visitors, while sailing with the crew. Underneath the deck, up to eight guests are accommodated in four en-suite cabins, three twin cabins and one pullman. The full beam master suite is the epitome of elegance and includes a large double-sized bed and walk-in wardrobe. The VIP cabin also has a walk-in closet and a king-size bed. Furthermore, one double and one twin cabin (converted into a double) complete her spacious accommodation.

## Principales caractéristiques

---

**Hydraulic swim platform**

---

**Jacuzzi on the flybridge**

---

**Zero speed stabilisers to reduce any rolling motion while at anchor**

---

# GIA SENA

Aerial view



Aerial view



Flybridge



Main deck aft



GIA SENA

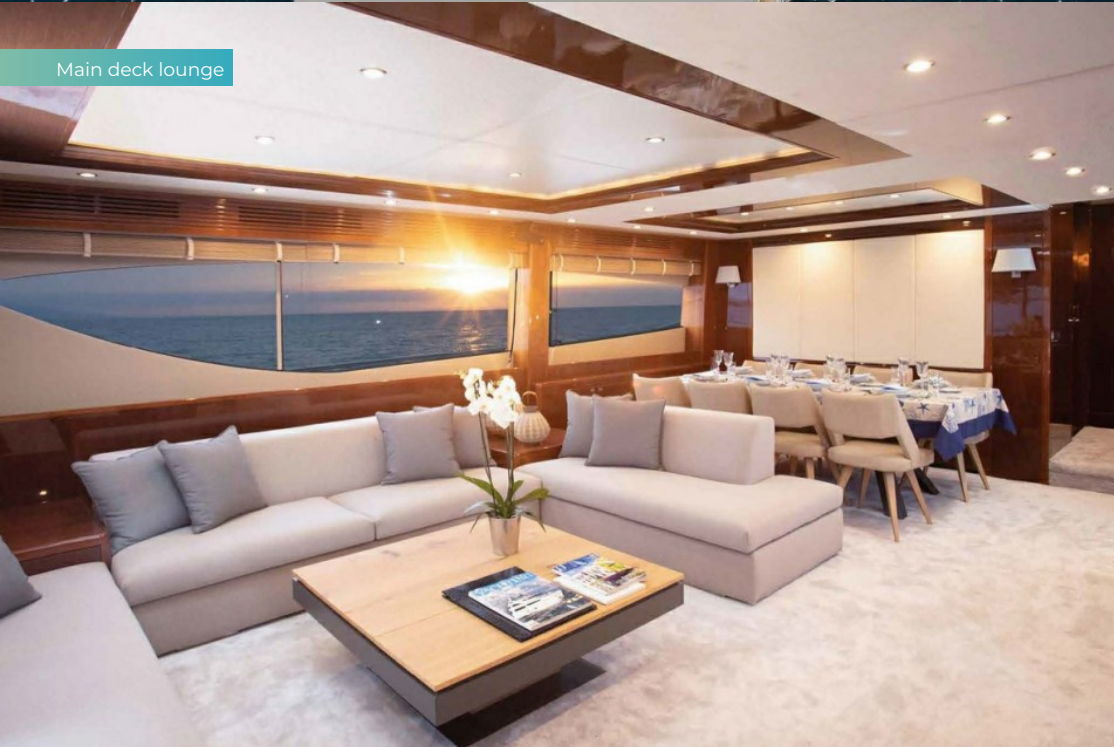
Foredeck



Main deck lounge



Main deck lounge



Main deck dining area



GIA SENA

Master cabin



Master cabin



Master office



VIP cabin



GIA SENA

Double cabin



Guest bathroom en suite



Twin cabin



Bridge



BURGESS

Discover the difference.  
burgessyachts.com



GIA SENA

Aerial view



At anchor



At anchor



Toys



BURGESS

Discover the difference.  
burgessyachts.com



GIA SENA

Toys



Aerial view



BURGESS

Discover the difference.  
burgessyachts.com





GIA SENA

# SPECIFICATIONS.



Longueur  
**26m**



Chantier  
**2009 (refitted 2019), Princess Yachts International**



Designer d'intérieur  
**Princess Yachts**



Largeur  
**6,2m**



Tirant d'eau  
**1,8m**



Vitesse de croisière  
**22 knots**



Consommation de carburant en vitesse de croisière  
**600 litres par heure**



Invités  
**8**



Nb de cabines invités  
**4 (3 x double, 1 x twin)**



Équipage  
**4**

[Voir le yacht sur le site](#)



GIA SENA

# ANNEXES & JEUX NAUTIQUES



1 x Tender



1 x Deck jacuzzi



1 x Waverunner



2 x Stand up paddleboards



Wakeboard



Waterskis



Inflatable tows



Scuba diving equipment



Fishing gear



Snorkelling gear

# BURGESS

# WORLD CLASS. WORLD WIDE.

<b>London</b> +44 20 7766 4300	<b>Monaco</b> +377 97 97 81 21	<b>New York</b> +1 212 223 0410	<b>Miami</b> +1 305 672 0150	<b>Singapore</b> +65 9665 8990	<b>Beverly Hills</b> +1 310 424 5112	<b>Palma</b> +34 971 495 413	<b>Athens</b> +30 210 967 1661
<b>Dubai</b> +971 4 425 5874	<b>Phuket</b> +66 7623 9739	<b>Hong Kong</b> +852 6496 2094	<b>Tokyo</b> +81 46 738 8612	<b>Sydney</b> +61 499 945 557	<b>Mumbai</b> +91 98211 67253	<b>Shanghai</b> +86 187 0898 6800	<b>Rio de Janeiro</b> +55 21 2553-3238

La publicité de ce(s) navire(s) dans des publications imprimées, sur Internet ou sur tout autre support n'est pas autorisée sans l'autorisation écrite préalable de Burgess.  
Toutes les informations sont données de bonne foi et sont considérées comme exactes, mais elles ne peuvent être garanties.

Dernière mise à jour : 10 décembre 2024