

# GEORGE P

---



GEORGE P

# OVERVIEW.

**Fresh from a major refit in 2023, GEORGE P is a 35-metre (115ft) Sunseeker with a raised pilothouse and two main levels of guest accommodation. Swift and elegant with the iconic good looks of her brand, she is designed to host up to 12 guests and ideal for a relaxing, stylish holiday with your family or a group of friends.**

She ticks all the must-have boxes for a luxurious, premium yacht charter experience. There are fold-out balcony terraces in the main deck lounge, huge plate glass through-hull windows, powerful dynamic stabilisers, a jacuzzi on the sun deck, a foredeck lounge and three different outdoor dining spaces to suit different occasions and weather conditions.

Her versatile, adaptable accommodation layout offers three double cabins plus two twins that can be converted into doubles. Extra pullman bunks can be deployed in the convertible cabins. She's therefore equally well suited to a charter party of up to five couples or several families with children. Every cabin has its own private en suite bathroom.

The master suite is a notably large full-beam cabin at the forward end of the main deck with a sofa and study desk flanking the king size bed and excellent sea views through two big windows on each side. The décor is tasteful and modern, clean and understated with a high standard of finish.

The main deck saloon is a comfortable, spacious and sociable lounge with cream leather sofas and a formal dining area with a 10-seat table. Large windows all round provide great views out and sliding glass double doors on two sides can be opened wide to let the sea breeze flow through. The exterior main deck aft is the primary open-air dining area with full-beam sunbeds astern.

The foredeck lounge is a separate, self-contained social area with seats around a table and reclining sunbeds. The sundeck has a sit-up bar and a dining table beneath the opening sunroof as well as the big, square jacuzzi pool.

She carries a good selection of toys including three SeaBob underwater scooters, a high-spec jet ski and a large jet RIB with a variety of inflatable tows. There'll be plenty of fun when the anchor goes down and with a top speed of almost 20 knots, she'll reach your chosen anchorage faster than most other yachts so you can pick the best spot for the afternoon.

## Key features

---

**Recently refitted**

---

**Hydraulic swim platform**

---

**Balcony off the main deck lounge**

---

**A crew with local expertise**

---

**Ribco chase tender**

---

**Jacuzzi on the flybridge**

---

**Zero speed stabilisers to reduce any rolling motion while at anchor**

---

# GEORGE P

Aerial view



Flybridge jacuzzi



Flybridge



Flybridge aft



GEORGE P

Detail



Flybridge dining area



Bow



Swim platform



GEORGE P

Main deck lounge



Main deck lounge



Main deck dining area



Master cabin



GEORGE P

Master cabin



Guest shower room en suite



Double cabin



Double cabin



**GEORGE P**

Convertible double/twin cabin with pullman



Guest shower room en suite



Cruising



GEORGE P

# SPECIFICATION.



Length  
**35m (114.8ft)**



Built  
**2013 (refitted 2023), Sunseeker**



Beam  
**7.4m (23.9ft)**



Draft  
**2.2m (7.9ft)**



Gross tonnage  
**236**



Cruising speed  
**19 knots**



Maximum speed  
**23 knots**



Fuel consumption at cruising speed  
**760 litres per hour**



Engines  
**2 x 2,640hp MTU**



Guests  
**12**



No. of guest cabins  
**5 (3 x double, 2 x double/twin, 2 x additional berths)**



Crew  
**7**

## Note

Fully licensed for charters in Greek waters.

[View yacht on website](#)





GEORGE P

# TENDERS & TOYS



1 × Towed tender



1 × Tender



1 × Deck jacuzzi



1 × Waverunner



3 × SeaBobs



2 × Stand up paddleboards



Wakeboard



Waterskis



Inflatable platform



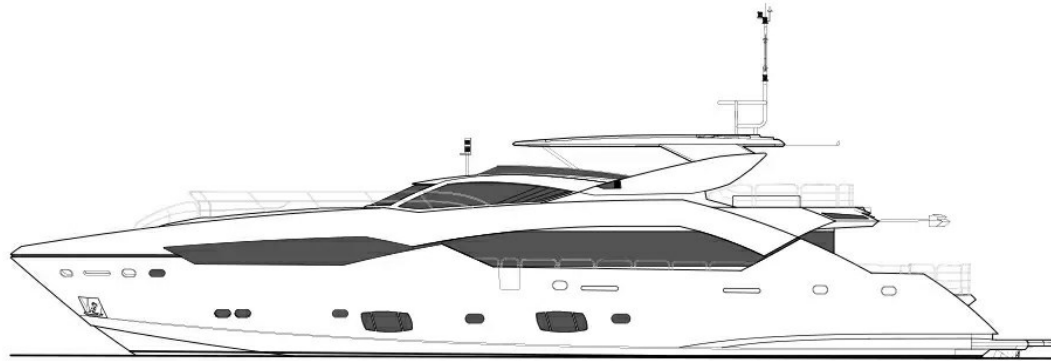
Inflatable toys



Snorkelling gear

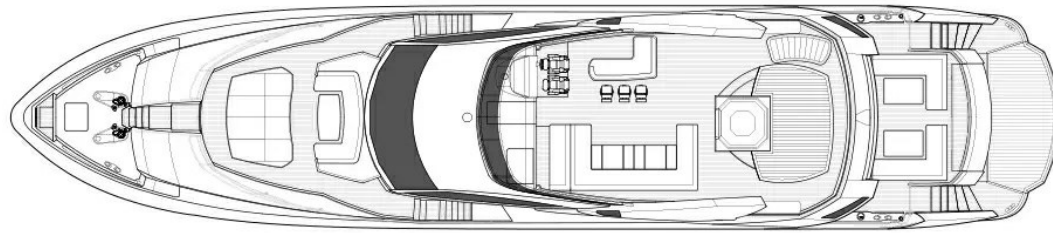


Fishing gear



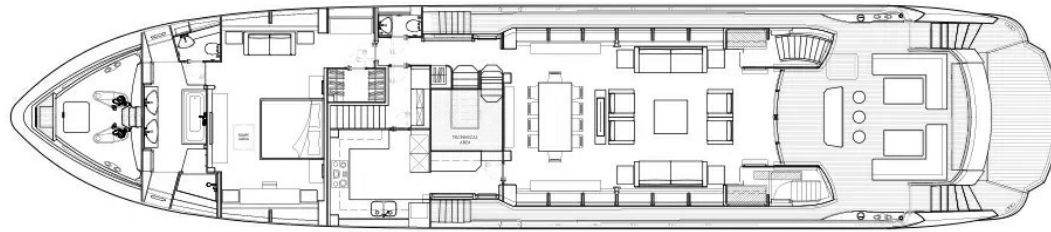
GEORGE P

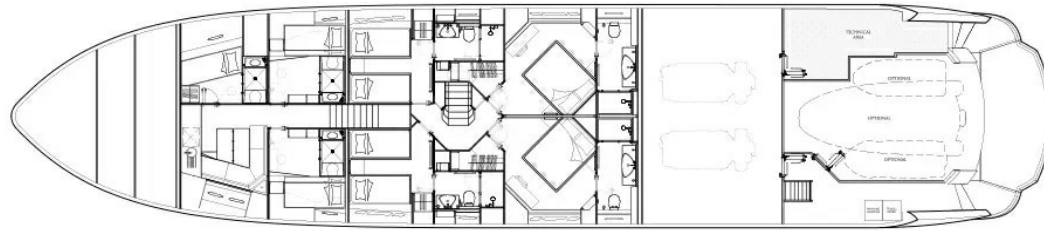
Flybridge



GEORGE P

Main deck





# BURGESS

# WORLD CLASS. WORLD WIDE.

<b>London</b> +44 20 7766 4300	<b>Monaco</b> +377 97 97 81 21	<b>New York</b> +1 212 223 0410	<b>Miami</b> +1 305 672 0150	<b>Singapore</b> +65 9665 8990	<b>Beverly Hills</b> +1 310 424 5112	<b>Palma</b> +34 971 495 413	<b>Athens</b> +30 210 967 1661
<b>Dubai</b> +971 4 425 5874	<b>Phuket</b> +66 7623 9739	<b>Hong Kong</b> +852 6496 2094	<b>Tokyo</b> +81 46 738 8612	<b>Sydney</b> +61 499 945 557	<b>Mumbai</b> +91 98211 67253	<b>Shanghai</b> +86 187 0898 6800	<b>Rio de Janeiro</b> +55 21 2553-3238
<b>Aspen</b> +1 970 710 2294							

Advertising of these vessel(s) in printed publications, on the internet or in any other medium is not permitted without prior written permission from Burgess. All particulars are given in good faith and are believed correct but they cannot be guaranteed.

Last updated: 05 February 2025