

**FX**

---



FX

# OVERVIEW.

## Key features

---

Extended swim platform

---

Exercise equipment

---

Jacuzzi on flybridge

---

Zero speed stabilisers to reduce any rolling motion while at anchor

---



FX

Cruising



Sun deck



Sun deck



Foredeck



BURGESS

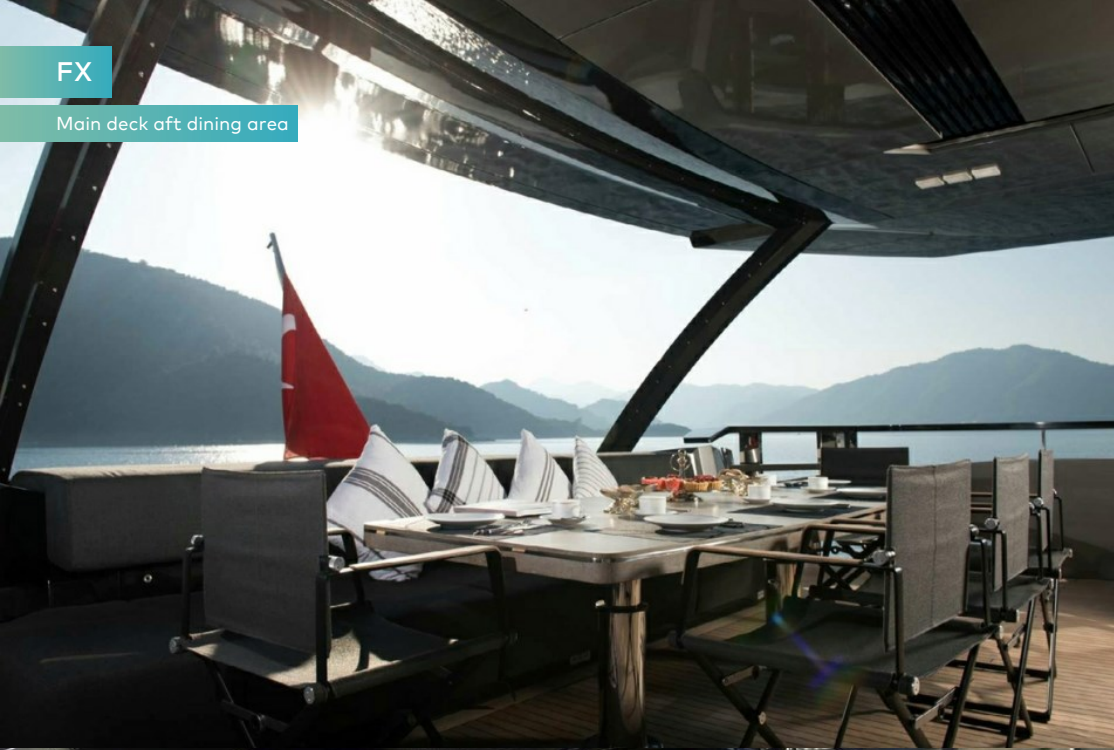
Discover the difference.  
burgessyachts.com





FX

Main deck aft dining area



Sun deck



Sun deck



Main deck lounge



BURGESS

Discover the difference.  
burgessyachts.com





FX

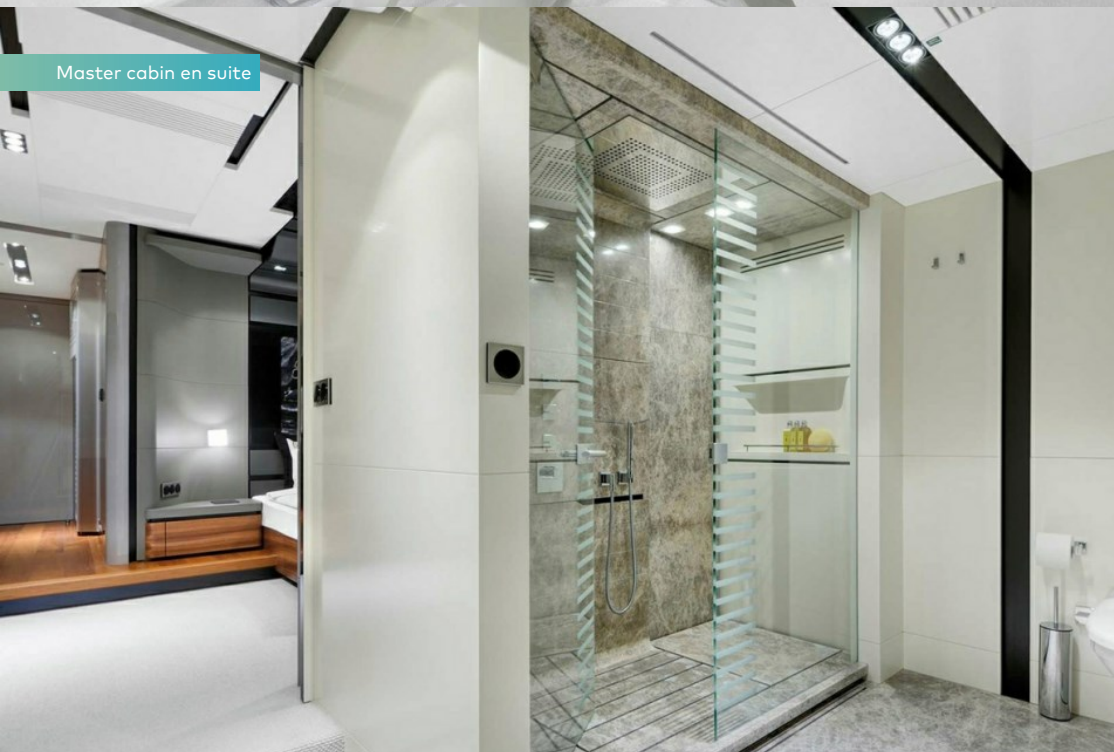
Main deck dining area



Master cabin



Master cabin en suite



Master office





FX

# SPECIFICATION.



Length  
**38m (124.6ft)**



Built  
**2016, Peri Yachts, Turkey**



Interior designer  
**Scaro Design**



Beam  
**8.1m (26.6ft)**



Draft  
**1.6m (5.2ft)**



Gross tonnage  
**295**



Cruising speed  
**20 knots**



Maximum speed  
**24 knots**



Fuel consumption at cruising speed  
**1,000 litres per hour**



Engines  
**2 x 2,250hp MTU**



Guests  
**10**



No. of guest cabins  
**5 (3 x double, 2 x twin, 2 x additional berths)**



Crew  
**7**

[View yacht on website](#)



FX

# EQUIPMENT.

## Tenders & toys

---



1 x Tender



1 x Deck jacuzzi



2 x Stand up paddleboards



Wakeboard



Kneeboard



Waterskis



Inflatable tows

# BURGESS

# WORLD CLASS. WORLD WIDE.

London +44 20 7766 4300	Monaco +377 97 97 81 21	New York +1 212 223 0410	Miami +1 305 672 0150	Singapore +65 9665 8990	Beverly Hills +1 310 424 5112	Palma +34 971 495 413	Athens +30 210 967 1661
	Dubai +971 4 425 5874	Phuket +66 7623 9739	Hong Kong +852 6496 2094	Tokyo +81 46 738 8612	Sydney +61 499 945 557	Mumbai +91 98211 67253	

---

Advertising of these vessel(s) in printed publications, on the internet or in any other medium is not permitted without prior written permission from Burgess. All particulars are given in good faith and are believed correct but they cannot be guaranteed.

Last updated: 01 March 2024