

FORCE BLUE



OVERVIEW.

With five levels, four decks of accommodation and a host of unique features, the 70-metre (230ft) explorer yacht FORCE BLUE offers an incredible amount of luxury living space and delivers an enormous amount of fun. Built to impress with huge, spectacular interior lounges and lobbies, she offers her guests a winning combination of world class opulence, full autonomy and an entire deck of accommodation, including a private outdoor terrace, dedicated exclusively to the master suite.

All of this space, totalling 1,325GT, is designed for just 12 overnight guests in six cabins, served by 21 crew – but it comes with the ability to host huge parties on board.

The key features of this amazing vessel include what is believed to be the largest and most comprehensively equipped spa/wellness centre on any private yacht available for charter, staffed by a professional beautician and masseuse. There's also a large gym, a high-end movie theatre and an outdoor saloon large enough to seat up to 60 diners, which converts into a disco deck with a professional-spec DJ booth, sound system and dance floor. An elevator links the main deck with the sundeck and all other decks in between.

The master suite includes a huge skylounge with three separate seating areas including a cluster of sofas around a fireplace and full-beam glass doors leading out onto a private aft deck. The master cabin itself has a large dressing room en suite as well as a his-and-hers bathroom with a vanity area, a walk-through shower room and a jacuzzi tub.

The full-beam VIP suite on the lower deck also has its own private lounge and a his-and-hers en suite bathroom with vanity and jacuzzi. The other four cabins are three large doubles with queen size beds and one twin that converts into a king size double, all with full en suite facilities.

The spa, located on the lower deck, has multiple treatment rooms housing a hammam steam shower, mudbath, sauna, jacuzzi, hydro massage, massage room and hairdressing salon. The adjoining gymnasium has a full set of Technogym equipment.

FORCE BLUE is also an RYA-accredited watersports training centre and carries a huge fleet of tenders and watersports toys. Who could ask for more?

Key features

Multi award winning captain and crew

An elevator serving from the main deck to the sun deck

Hamam, sauna, steamshower, mudbath, jacuzzi hydro massage, massage room, hairdresser and beauty salon

Fully equipped gym

Wheelchair friendly

Capacity up to 350 guests for quayside events

FORCE BLUE

Main deck salon



Main deck meeting room/dining area



Owner's deck salon



Master cabin



FORCE BLUE

Master cabin



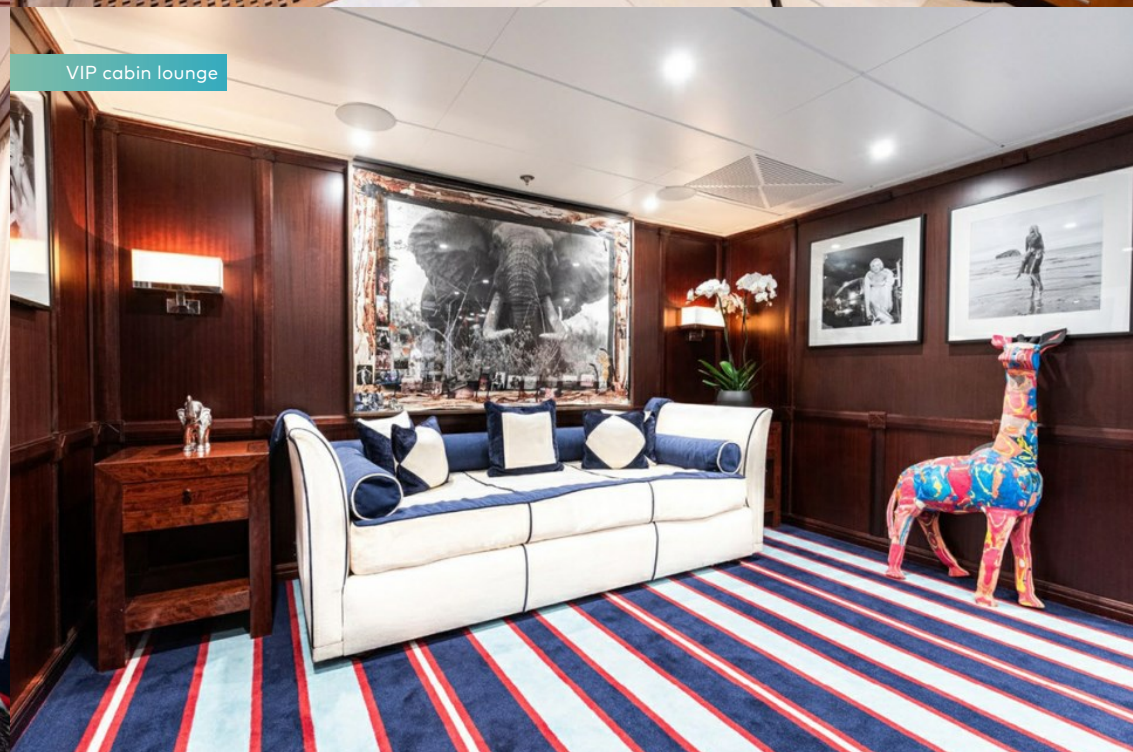
Master cabin en suite



VIP cabin



VIP cabin lounge



FORCE BLUE

VIP en suite



Double cabin



Steam shower, hammam, mudbath



Hair dressing salon



FORCE BLUE

Lifestyle



Outdoor exercise area



Gym



Cinema



BURGESS

Discover the difference.
burgessyachts.com



FORCE BLUE

Cinema



At anchor



Watertoys



At anchor



BURGESS

Discover the difference.
burgessyachts.com



FORCE BLUE

SPECIFICATION.



Length
70.6m (231.4ft)



Built
2002 (refitted 2022), Royal Denship, Denmark



Interior designer
Michele Bonan



Beam
11.4m (37.4ft)



Draft
3m (9.8ft)



Gross tonnage
1,325



Cruising speed
12.5 knots



Maximum speed
16 knots



Fuel consumption at cruising speed
335 litres per hour



Engines
2 x 1,850hp Caterpillar



Guests
12



No. of guest cabins
6 (5 x double, 1 x twin)



Crew
21

Note

Fully licensed for charters in Spanish waters. Fully licensed for charters in Greek waters.

[View yacht on website](#)

[Watch yacht video](#)



EQUIPMENT.

Tenders & toys



3 × Tenders



RYA training centre for jetskis
& waverunners



3 × Waverunners



2 × SeaBobs



1 × Jetsurf



1 × eFoil



2 × Stand up paddleboards



Wakeboard



Waterskis



Inflatable tows



Scuba diving equipment



Snorkelling gear

Fitness & wellness



Boxing equipment



Cardio wave side stepper



Kinesis machine



Power plate



Training bench



Treadmill



Upright stationary bike



Hammam/Steam room

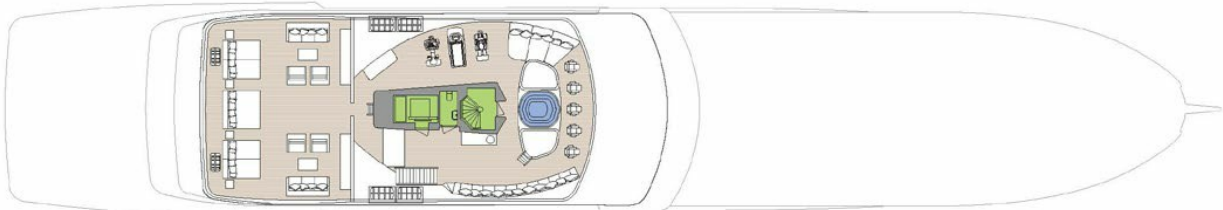


On board masseuse

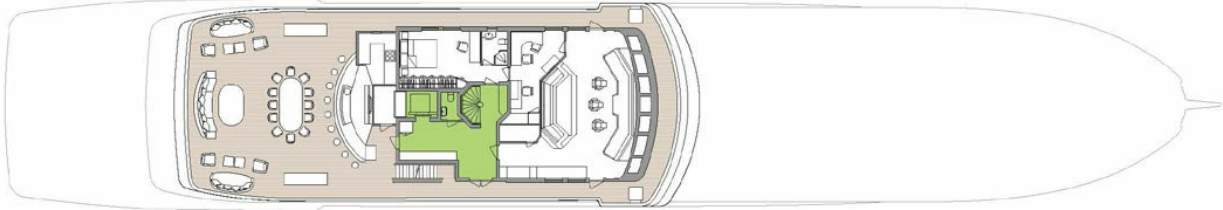


Sauna

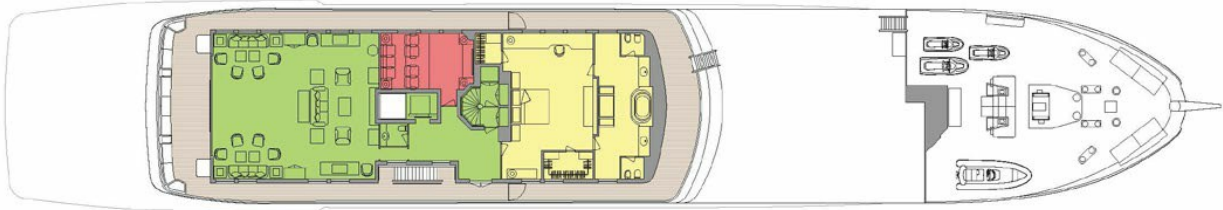




SUN DECK



BRIDGE DECK



OWNER'S DECK



MAIN DECK



LOWER DECK



TANK TOP

GUEST AREAS MASTER SUITE VIP SUITE GUEST CABINS CINEMA GYM MASSAGE SUITE BEAUTY SALON SPA HAMMAM JACUZZI

BURGESS

WORLD CLASS. WORLD WIDE.

London +44 20 7766 4300	Monaco +377 97 97 81 21	New York +1 212 223 0410	Miami +1 305 672 0150	Singapore +65 9665 8990	Beverly Hills +1 310 424 5112	Palma +34 971 495 413	Athens +30 210 967 1661
	Dubai +971 4 425 5874	Phuket +66 7623 9739	Hong Kong +852 6496 2094	Tokyo +81 46 738 8612	Sydney +61 499 945 557	Mumbai +91 98211 67253	

Advertising of these vessel(s) in printed publications, on the internet or in any other medium is not permitted without prior written permission from Burgess. All particulars are given in good faith and are believed correct but they cannot be guaranteed.

Last updated: 12 April 2024