

FLAG



FLAG

SPÉCIFICATIONS.



Prix demandé
EUR 39 500 000



Chantier
2000 (refitted 2022), Feadship, Royal Van Lent,
The Netherlands



Longueur
62,3m



Largeur
10,8m



Tirant d'eau
3,3m



Tonnage brut
1 078



Vitesse de croisière
15 knots



Vitesse maximale
16 knots



Autonomie
6 800 nm



Pavillon
Cayman Islands



Position
USA



Classe
Lloyd's Register (LR) ✕ A1 SSC Yacht G6 ✕ LMC



Designer extérieur
De Voogt



Designer d'intérieur
Chahan Interior Design



Construction
Hull - Steel, Superstructure - Aluminium



Équipage
18



Invités
18



Cabines
7 (7 × double, 4 × additional berths)



Moteurs
2 × 2 000hp Caterpillar



Propulsion
Twin screw diesel yacht

Note

Not available for sale to US residents while in US waters.

[Voir le yacht sur le site](#)

[Regarder la vidéo du yacht](#)



FLAG

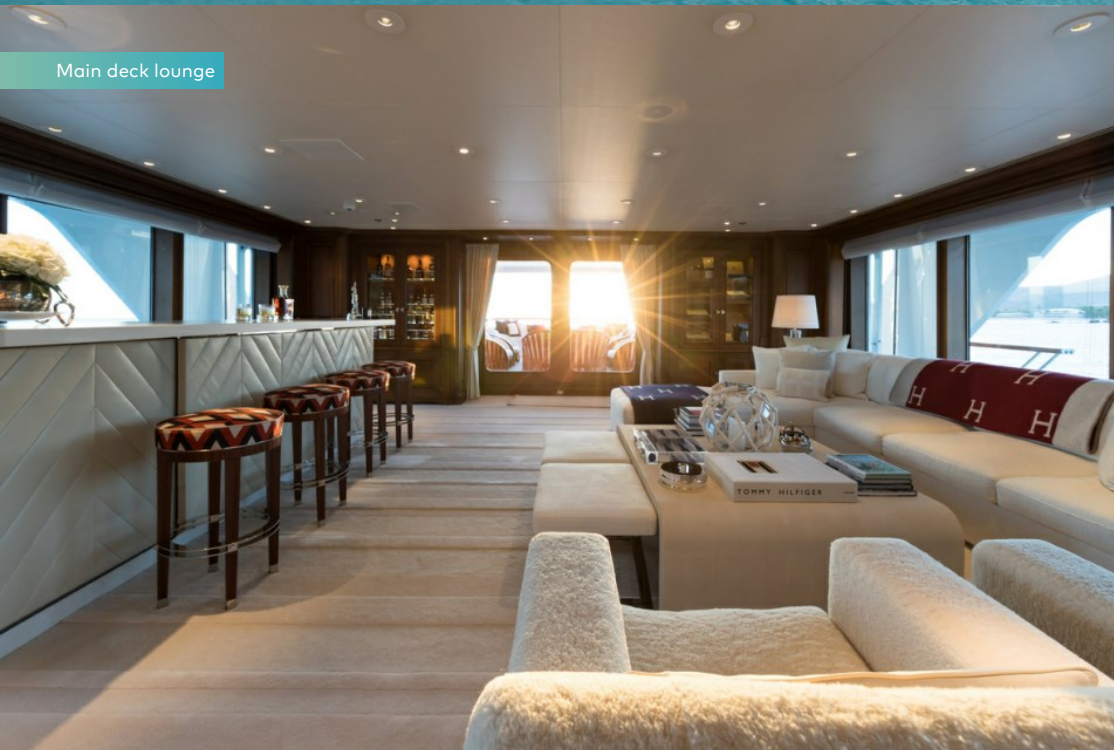
Cruising



Main deck lounge



Main deck lounge



Main deck bar



BURGESS

Discover the difference.
burgessyachts.com



FLAG

Main deck dining



Foyer



Master cabin



Master cabin



FLAG

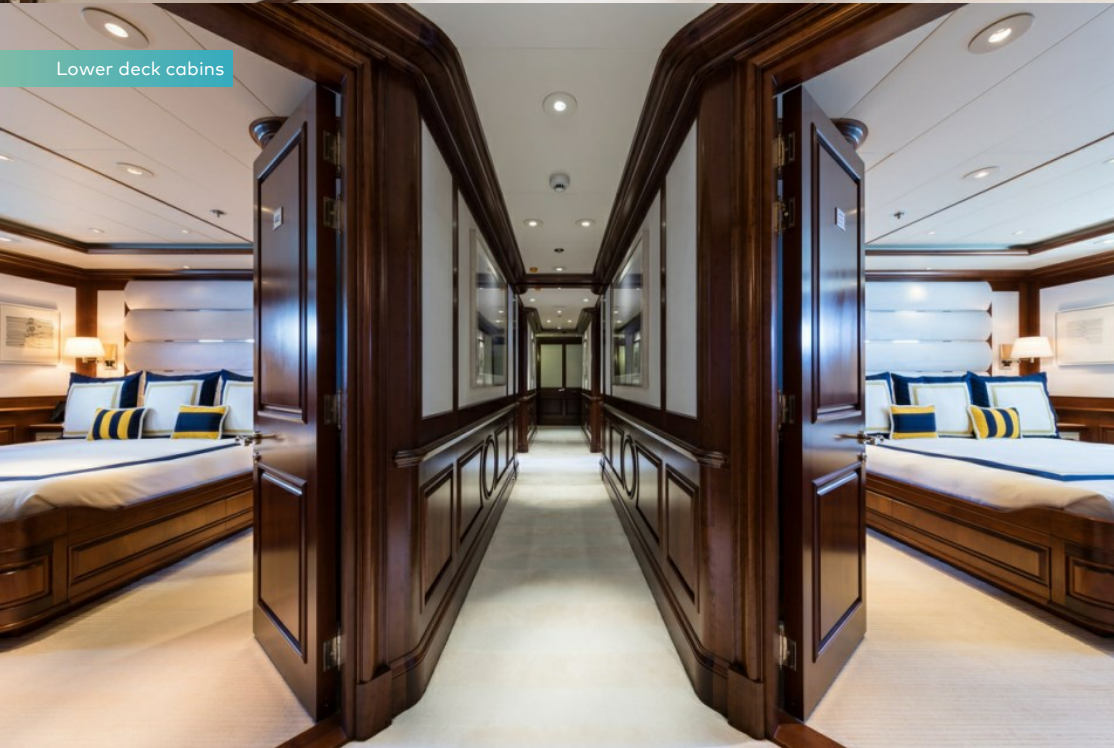
Master cabin study



Master cabin shower room



Lower deck cabins



Double cabin



FLAG

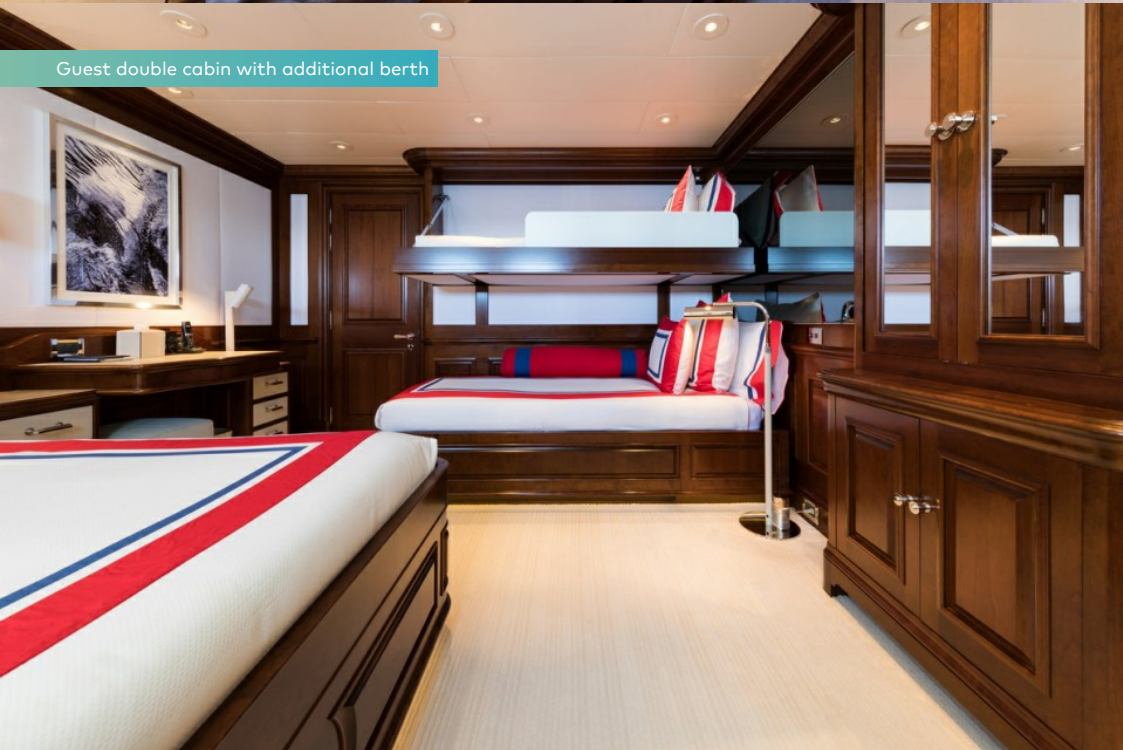
Guest double cabin



Double cabin



Guest double cabin with additional berth



Guest cabin bathroom



FLAG

Staircase



Sky lounge



Sky lounge bar



Main deck aft



FLAG

Main deck aft



Bridge deck aft seating



Sun deck aft



Sun deck aft



FLAG

Sun deck forward pool



Sun deck forward



Gym



Galley



FLAG

Sun deck aft



Jacuzzi



Aerial view



Stern



BURGESS

Discover the difference.
burgessyachts.com



FLAG

Aerial view



BURGESS

Discover the difference.
burgessyachts.com



FLAG

APERÇU.

FLAG is a 62.3m (204.4ft) yacht delivered by the renowned Dutch shipyard Feadship, Royal Van Lent in 2000, with exterior design and engineering by De Voogt. Originally built to a Winch Design her interiors were dramatically restyled by Chahan Interior Design. Always meticulously maintained by her four highly experienced owners, she underwent her last major refit in 2012 and was subsequently awarded 'Best Refitted Yacht' at the World Superyacht Awards 2013.

Her elegant interior design is light and welcoming with an abundance of sunlight thanks to large picture windows in both the main and bridge deck lounges. The master cabin on the main deck is full beam with separate his and hers en suite bathrooms and a private study. The remaining six guest cabins on the lower deck are all spacious and well designed with en suite bathroom facilities. In total, this yacht can comfortably sleep up to 18 guests.

A guest elevator is available for easy transportation from the lower deck through to the sun deck. The yacht's expansive sun deck has a large pool surrounded by sunpads forward, a chef station with BBQ and pizza oven, open air dining and a sun lounge aft. There is more al fresco dining and lounges on the upper deck aft and a large lounge on the main deck aft. Guests will also find a well-equipped gym on the bridge deck.

Two 2,000hp Caterpillar diesel engines give her a top speed of 16 knots and she has a transoceanic range of 6,800nm at 12 knots. Zero speed stabilisers ensure total comfort while at anchor.

Principales caractéristiques

Seven spacious cabins offer flexible accommodations for up to 18 guests

Guest elevator service is available to all decks

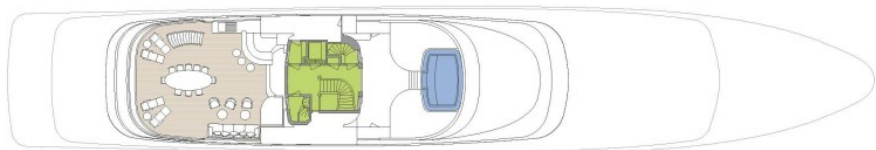
Vast deck areas provide an array of options for entertainment including multiple al fresco dining areas and a large swimming pool on the sun deck

Light and sophisticated interior with large picture windows offers a welcome atmosphere throughout the yacht

An impressive transoceanic range of 6,800nm

Annexes

1 26' custom twin diesel with twin 200 hp
Yanmars 1 26' custom Tender with (2) 250 hp
Yamaha Outboards 1 MOB 14' with 25 HP
SOLAS Engine new in 2008



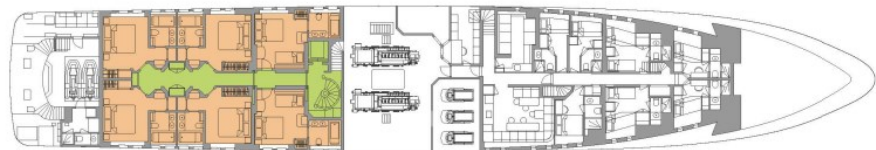
SUN DECK



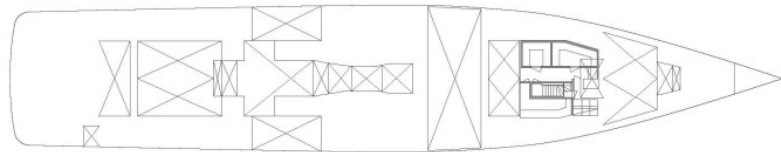
BRIDGE DECK



MAIN DECK



LOWER DECK



TANK DECK

■ GUEST AREAS ■ MASTER SUITE ■ GUEST CABINS ■ GYM ■ JACUZZI

BURGESS

WORLD CLASS. WORLD WIDE.

London	Monaco	New York	Miami	Singapore	Beverly Hills	Palma	Athens
+44 20 7766 4300	+377 97 97 81 21	+1 212 223 0410	+1 305 672 0150	+65 9665 8990	+1 310 424 5112	+34 971 495 413	+30 210 967 1661
Dubai	Phuket	Hong Kong	Tokyo	Sydney	Mumbai	Shanghai	
+971 4 425 5874	+66 7623 9739	+852 6496 2094	+81 46 738 8612	+61 499 945 557	+91 98211 67253	+86 187 0898 6800	

La publicité de ce(s) navire(s) dans des publications imprimées, sur Internet ou sur tout autre support n'est pas autorisée sans l'autorisation écrite préalable de Burgess.
Toutes les informations sont données de bonne foi et sont considérées comme exactes, mais elles ne peuvent être garanties.

Dernière mise à jour : 18 avril 2024