

FLAG



FLAG

OVERVIEW.

One of the most high-profile yachts on the charter scene, 62m motor yacht FLAG is the ideal choice for those looking for a sophisticated, yet fun vacation.

Firstly, her build and design were the work of award-winning Dutch shipyard Feadship with interiors created by the highly acclaimed Chahan Minassian, the creative director behind Ralph Lauren and designer of numerous luxury hotels and residences world over. Think classic design with nautical touches leaving a light and airy essence.

FLAG is the ideal multi-generational charter vessel with a seven-cabin flexible layout. With six of the cabins located on the lower deck, and the master found on the main deck, family and friends can find ample room for privacy and relaxation. Social areas are plentiful on board, with a spacious sun deck including large pool. Merging shaded with sun spots means the whole family can safely play together. Al fresco living runs freely through this yacht, so expect to find deck dining options to include a pizza oven, BBQ and bar.

In today's world the need for wellness options has never been greater, so FLAG is pleased to offer a well-equipped gym located on the bridge deck, of course should you choose, the decks are large enough for sunrise or sunset yoga too. A multi-skilled crew of 17 will ensure your needs are well-catered for. Remember to advise the team on your dietary requirements so chef can design his menu to your exacting tastes.

FLAG offers a well-rounded experience from messing around in the water on the yacht's jetskis, SeaBobs, snorkelling gear or the inflatables (including large slide) to relaxing with your favourite movie. Effortlessly slide between formal dining in the main saloon to barefoot luxury on the sun deck with cocktail in hand. What ever you are looking for in your next yacht charter, FLAG is sure to deliver.

Key features

Fabulous deck spaces, including a large pool on the sun deck

Flexible accommodation layout including six lower deck cabins and a full beam master on the main deck

Well equipped gym including a cross-trainer and weights

Highly experienced crew of 17

An elevator which services all guest decks

Zero speed stabilisers to reduce any rolling motion while at anchor

FLAG

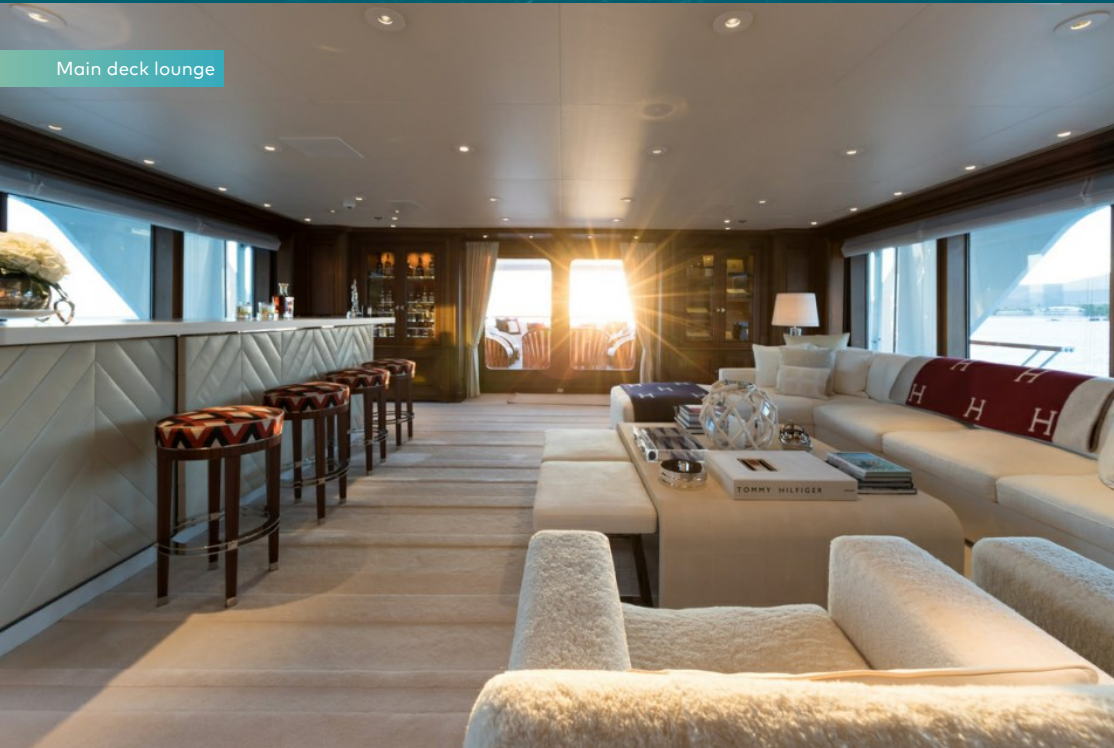
Cruising



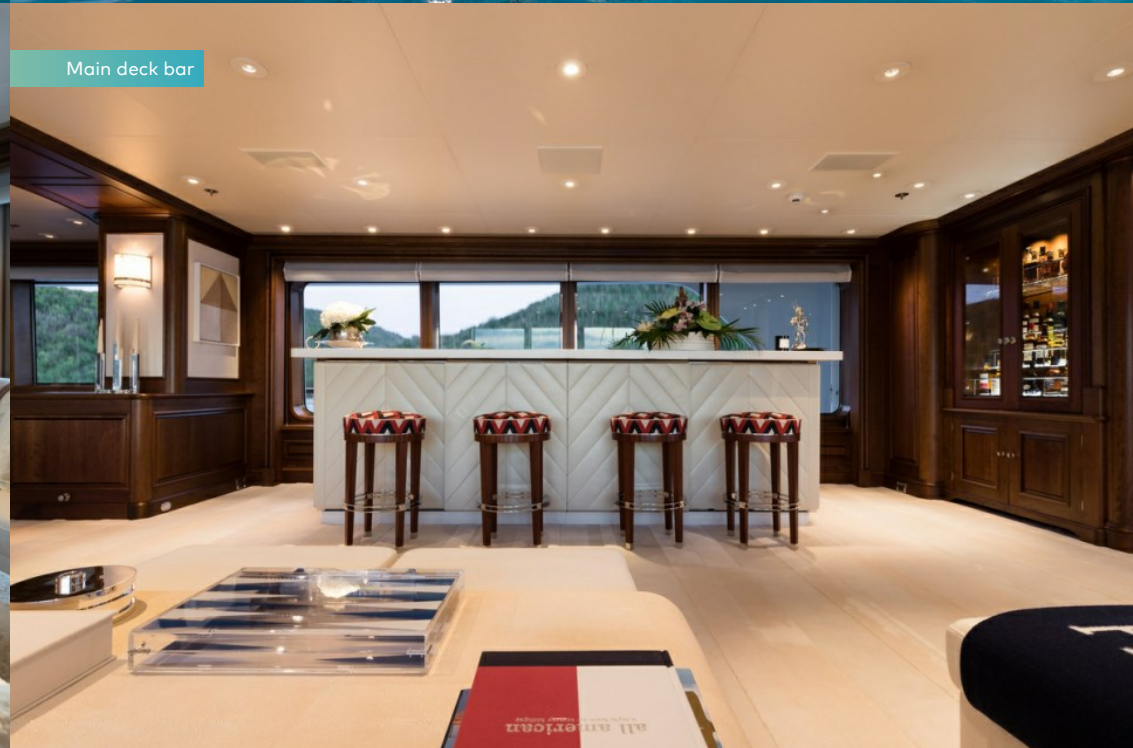
Jetskis



Main deck lounge



Main deck bar



BURGESS

Discover the difference.
burgessyachts.com



FLAG

Main deck lounge bar



Main deck lounge



Main deck dining



Sky lounge



FLAG

Sky lounge bar



Master cabin



Master cabin



Master cabin shower room



FLAG

Master cabin study



Double cabin



Double cabin



Double cabin with additional berth



BURGESS

Discover the difference.
burgessyachts.com



FLAG

Lower deck cabins



Guest cabin bathroom



Gym



Main deck aft



FLAG

Bridge deck aft dining



Bridge deck aft seating



Sun deck aft



Sun deck aft



BURGESS

Discover the difference.
burgessyachts.com



FLAG

Sun deck BBQ



Sun deck forward pool



Aft decks



Waterslide



BURGESS

Discover the difference.
burgessyachts.com



FLAG

Watersports



Aerial view



BURGESS

Discover the difference.
burgessyachts.com



FLAG

SPECIFICATION.



Length
62.3m (204.4ft)



Built
2000 (refitted 2022), Feadship, Royal Van Lent,
The Netherlands



Interior designer
Chahan Interior Design



Beam
10.8m (35.4ft)



Draft
3.3m (10.8ft)



Gross tonnage
1,078



Cruising speed
15 knots



Maximum speed
16 knots



Fuel consumption at cruising speed
500 litres per hour



Engines
2 x 2,000hp Caterpillar



Guests
12



No. of guest cabins
7 (7 x double, 4 x additional berths)



Crew
17

Note

Not available for charter to US residents while in US waters.

[View yacht on website](#)

[Watch yacht video](#)



EQUIPMENT.

Tenders & toys



1 x Towed tender



2 x Tenders



1 x Deck jacuzzi



Waterslide



Anti-jellyfish pool



Climbing wall



Trampoline



Aquapark



RYA training centre for jetskis
& waverunners



2 x Waverunners



2 x SeaBobs



2 x Kayaks



2 x Stand up paddleboards



Wakeboard



Kneeboard



Waterskis



Inflatable tows



Scuba diving equipment



Fishing gear



Snorkelling gear

8.2m Novurania Chase Series 27 tender with 300hp engine | 8.2m Novurania tender with 300hp engine | Rescue tender with 25hp engine | 2 x Sea-Doo GTR 230 waverunners (2 man) | 3 x SeaBobs | 2 x inflatable kayaks | 2 x inflatable stand up paddle boards | Waterskis | Wakeboards | Kneeboard & tows | Inflatable waterslide (7m long) | Aquaglide Rebound 16 trampoline and A frame waterslide | Water park set-up | Climbing wall | Anti-jellyfish pool | Scuba diving equipment (rendezvous diving only) | Snorkelling gear | Fishing gear | Diving board | Approved RYA training centre for guests' use of personal watercraft (jetskis)

Fitness & wellness



Cross trainer



Exercise balls



Free weights



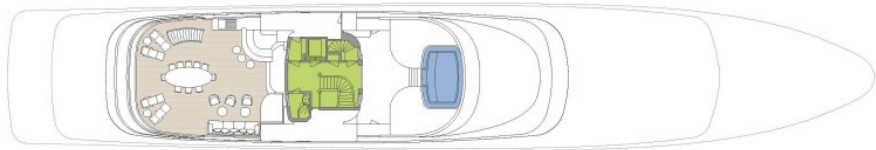
Multi gym



Yoga mats

Communication & entertainment

Satcom & cellular communications facilities | VSAT | Wi-Fi internet access | State-of-the-art AV systems | Satellite television



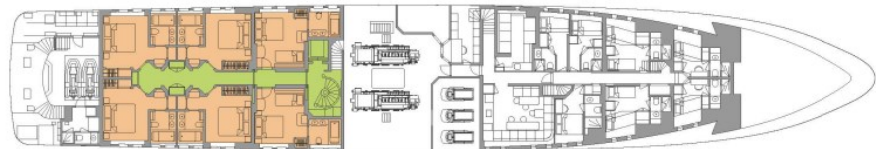
SUN DECK



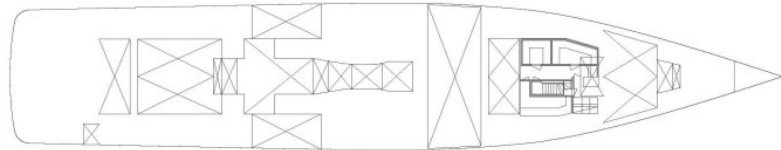
BRIDGE DECK



MAIN DECK



LOWER DECK



TANK DECK

■ GUEST AREAS ■ MASTER SUITE ■ GUEST CABINS ■ GYM ■ JACUZZI

BURGESS

WORLD CLASS. WORLD WIDE.

London +44 20 7766 4300	Monaco +377 97 97 81 21	New York +1 212 223 0410	Miami +1 305 672 0150	Singapore +65 9665 8990	Beverly Hills +1 310 424 5112	Palma +34 971 495 413	Athens +30 210 967 1661
Dubai +971 4 425 5874	Phuket +66 7623 9739	Hong Kong +852 6496 2094	Tokyo +81 46 738 8612	Sydney +61 499 945 557	Mumbai +91 98211 67253	Shanghai +86 187 0898 6800	

Advertising of these vessel(s) in printed publications, on the internet or in any other medium is not permitted without prior written permission from Burgess. All particulars are given in good faith and are believed correct but they cannot be guaranteed.

Last updated: 18 April 2024