

# FAST & FURIOUS

---





FAST & FURIOUS

# OVERVIEW.

**The 44.6m (146.3ft) FAST & FURIOUS is the largest vessel in the sporty range from AB Yachts, launched in 2016. The fastest 40m+ available on the charter market, FAST & FURIOUS perfectly marries comfort, speed and style. With a top speed of 42 knots and a shallow draft, she's perfect for island hopping and accessing secluded beaches.**

Her sleek, aggressive lines slice effortlessly through the water for an exhilarating ride, with plenty of options for alfresco dining and sunbathing across the large flybridge and aft deck.

Inside, contemporary elegance meets comfort, with soft furnishings and a light-filled atmosphere. The spacious main deck saloon offers generous sofa seating, flowing seamlessly to the formal dining area which seats 10.

FAST & FURIOUS welcomes up to 10 guests across five cabins, attended by a dedicated crew of seven, ensuring impeccable service throughout the journey. The full-beam master suite on the main deck is a serene retreat, featuring a walk-in wardrobe, en suite, and a spectacular drop-down balcony on the starboard side. Exclusive private steps lead directly to the foredeck, ensuring seamless movement on board.

On the lower deck, a central lobby connects four additional cabins: three doubles and one twin.

To whisk you ashore, FAST & FURIOUS comes with an excellent 10m Seawater Smeralda chase boat, plus a whole host of toys including SeaBobs, jetskis, and paddleboards for endless fun on the water.

## Key features

---

**Master cabin with private balcony**

---

**10m Seawater Smeralda chase boat**

---

**Fastest 40m+ available on the charter market reaching a max speed of 42 knots**

---

**Shaded deck dining and deck areas**

---

**Crew with local expertise**

---

**A good choice of exterior and interior dining areas**

---



## FAST & FURIOUS

Aerial shot



Aerial shot



Upper deck



Main deck midships



BURGESS

Discover the difference.  
burgessyachts.com



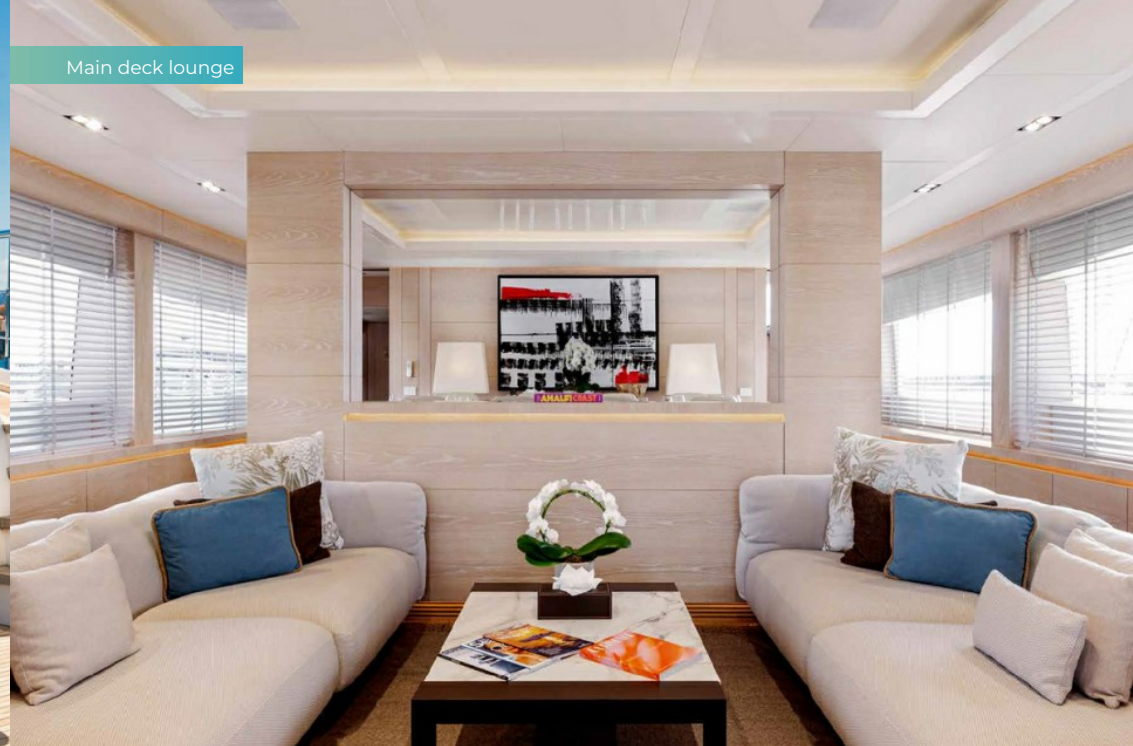


## FAST & FURIOUS

Foredeck seating



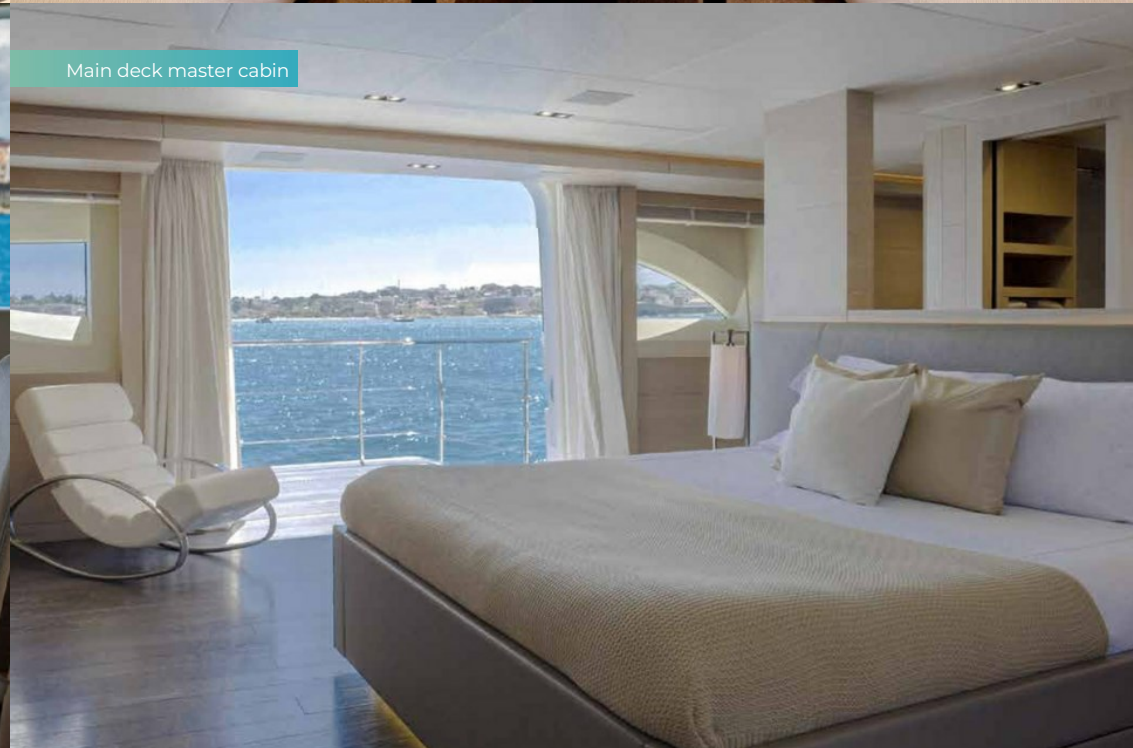
Main deck lounge



Main deck dining



Main deck master cabin





## FAST & FURIOUS

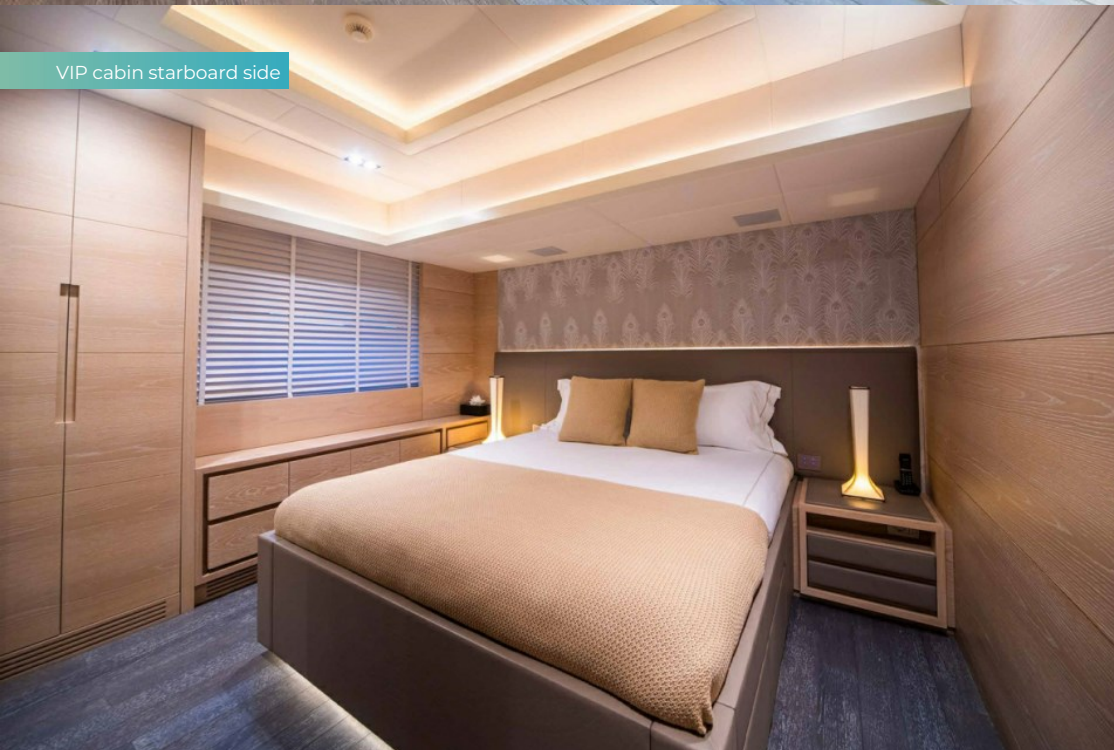
Main deck master cabin private balcony



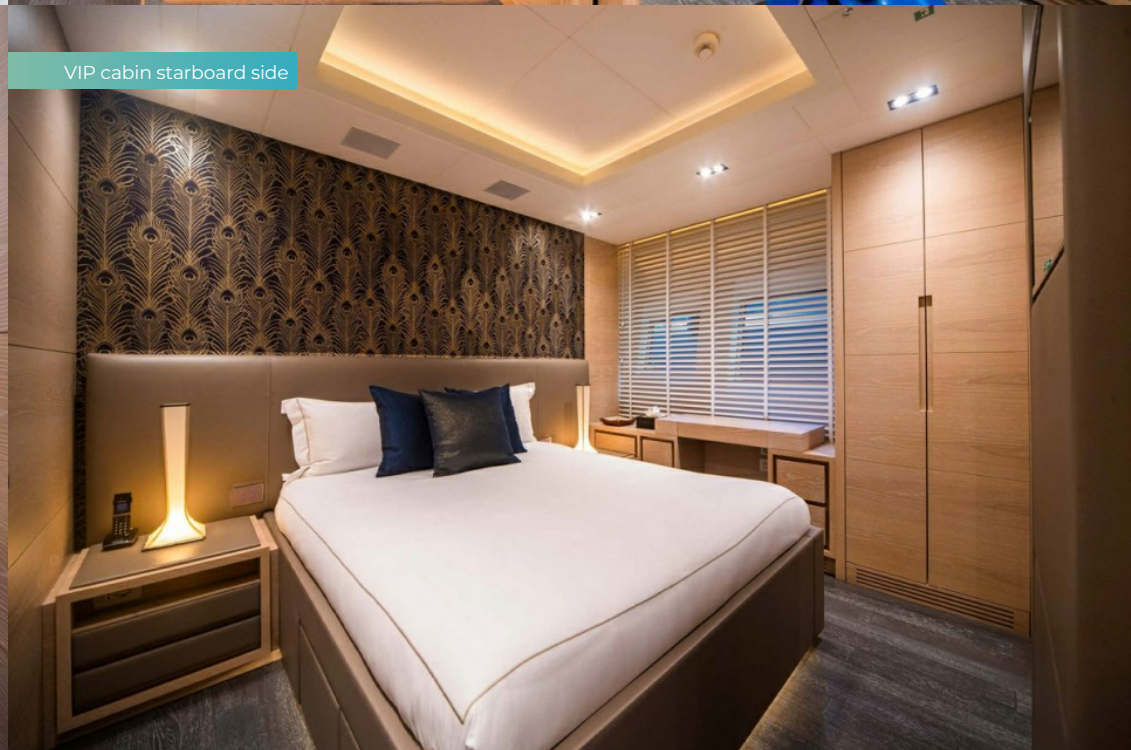
Lower deck staircase



VIP cabin starboard side



VIP cabin starboard side





## FAST & FURIOUS

Twin cabin port side



Gym



Aerial shot



Jetski



BURGESS

Discover the difference.  
burgessyachts.com





FAST & FURIOUS

SeaBob



At anchor



BURGESS

Discover the difference.  
[burgessyachts.com](http://burgessyachts.com)



FAST & FURIOUS

# SPECIFICATION.



Length  
**44.6m (146.3ft)**



Built  
**2016, AB Yachts, Italy**



Interior designer  
**AB Yachts**



Beam  
**8.3m (27.2ft)**



Draft  
**1.3m (4.3ft)**



Gross tonnage  
**338**



Cruising speed  
**20 knots**



Maximum speed  
**42 knots**



Fuel consumption at cruising speed  
**654 litres per hour**



Guests  
**10**



No. of guest cabins  
**5 (4 × double, 1 × twin)**



Crew  
**7**

## Note

Registered under the Yacht Engaged in Trade scheme (YET). All Mediterranean charters must start in either the South of France, Monaco or Corsica. For all charters, the principal charterer must be a non-EU resident.

[View yacht on website](#)

[Watch yacht video](#)





FAST & FURIOUS

# TENDERS & TOYS



1 × Towed tender



1 × Waverunner



2 × SeaBobs



2 × Subwings



1 × eFoil



2 × Stand up paddleboards



Wakeboard



Inflatable platform



Inflatable tows



Snorkelling gear



FAST & FURIOUS

# FITNESS & WELLNESS



Free weights



Yoga mats





FAST & FURIOUS

# COMMUNICATION & ENTERTAINMENT



Wi-Fi internet access



Speaker systems



Streaming services



Karaoke



# BURGESS

# WORLD CLASS. WORLD WIDE.

<b>London</b> +44 20 7766 4300	<b>Monaco</b> +377 97 97 81 21	<b>New York</b> +1 212 223 0410	<b>Miami</b> +1 305 672 0150	<b>Singapore</b> +65 9665 8990	<b>Beverly Hills</b> +1 310 424 5112	<b>Palma</b> +34 971 495 413	<b>Athens</b> +30 210 967 1661
<b>Dubai</b> +971 4 425 5874	<b>Phuket</b> +66 7623 9739	<b>Hong Kong</b> +852 6496 2094	<b>Tokyo</b> +81 46 738 8612	<b>Sydney</b> +61 499 945 557	<b>Mumbai</b> +91 98211 67253	<b>Shanghai</b> +86 159 0162 1898	<b>Rio de Janeiro</b> +55 21 2553-3238
<b>Aspen</b> +1 970 710 2294							

Advertising of these vessel(s) in printed publications, on the internet or in any other medium is not permitted without prior written permission from Burgess. All particulars are given in good faith and are believed correct but they cannot be guaranteed.

Last updated: 09 May 2025