

FAR FAR AWAY



FAR FAR AWAY

SPÉCIFICATIONS.



Prix demandé
EUR 11 950 000



Chantier
2012 (refitted 2021), Inace Yachts, Brazil



Longueur
46,5m



Largeur
8,4m



Tirant d'eau
2,4m



Tonnage brut
391



Vitesse de croisière
11 knots



Vitesse maximale
12 knots



Autonomie
7 000 nm



Pavillon
Cook Islands



Position
West Mediterranean



Classe
MCA



Designer extérieur
De Basto Design



Designer d'intérieur
De Basto Design



Construction
Hull - Steel, Superstructure - Aluminium, Deck - Teak and Steel



Équipage
6



Invités
12



Cabines
6 (3 x double, 3 x twin)



Moteurs
2 x 600hp Caterpillar



Propulsion
Twin screw diesel yacht

[Voir le yacht sur le site](#)



FAR FAR AWAY

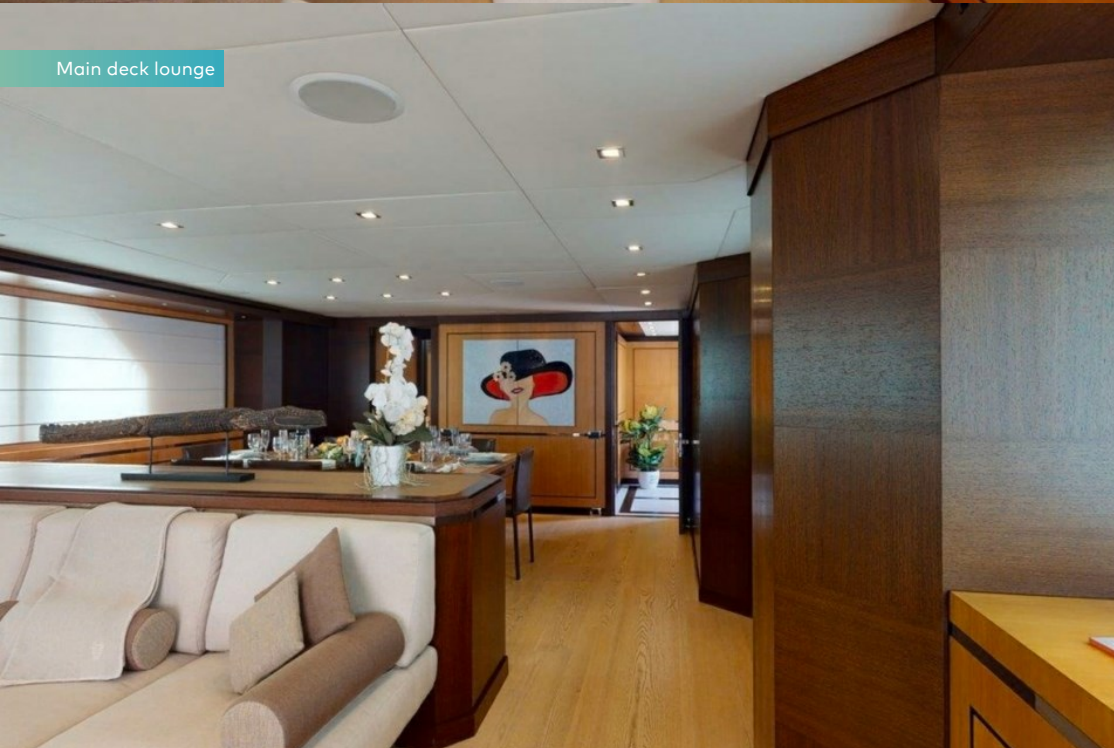
Main deck lounge



Main deck lounge



Main deck lounge



Main deck dining



FAR FAR AWAY

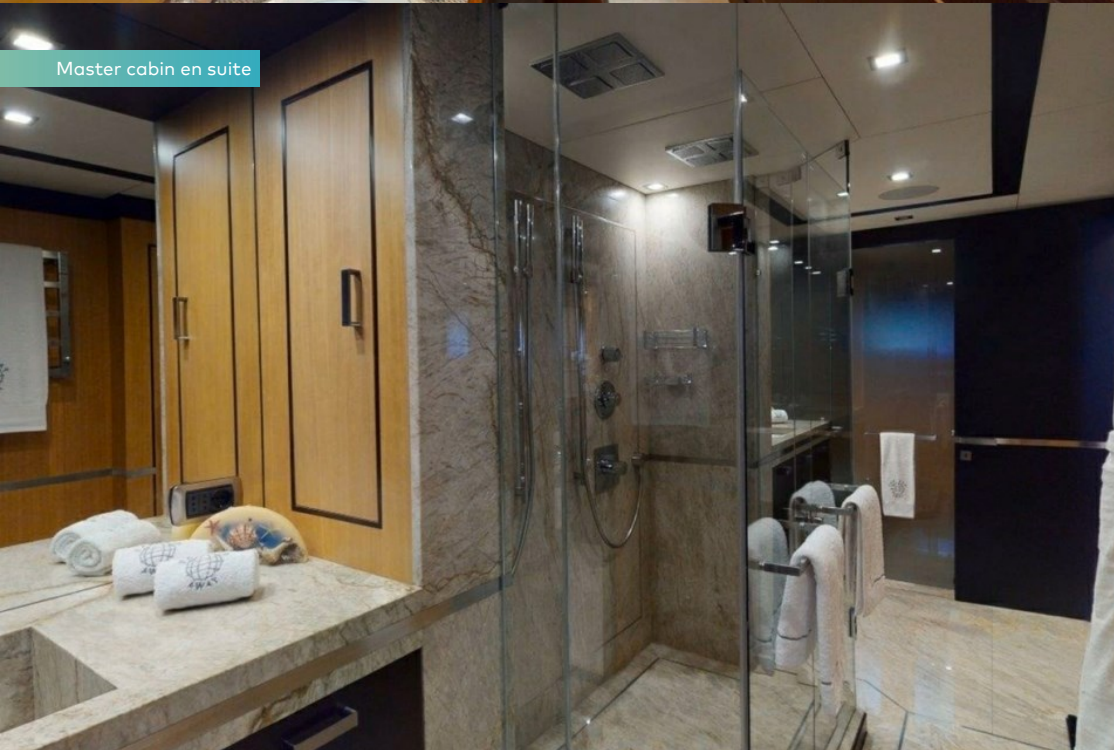
Main deck dining



Master cabin



Master cabin en suite



Guest cabin



BURGESS

Discover the difference.
burgessyachts.com



FAR FAR AWAY

Guest cabin



Guest cabin



Sky lounge



Sky lounge



FAR FAR AWAY

Sky lounge



Sky lounge

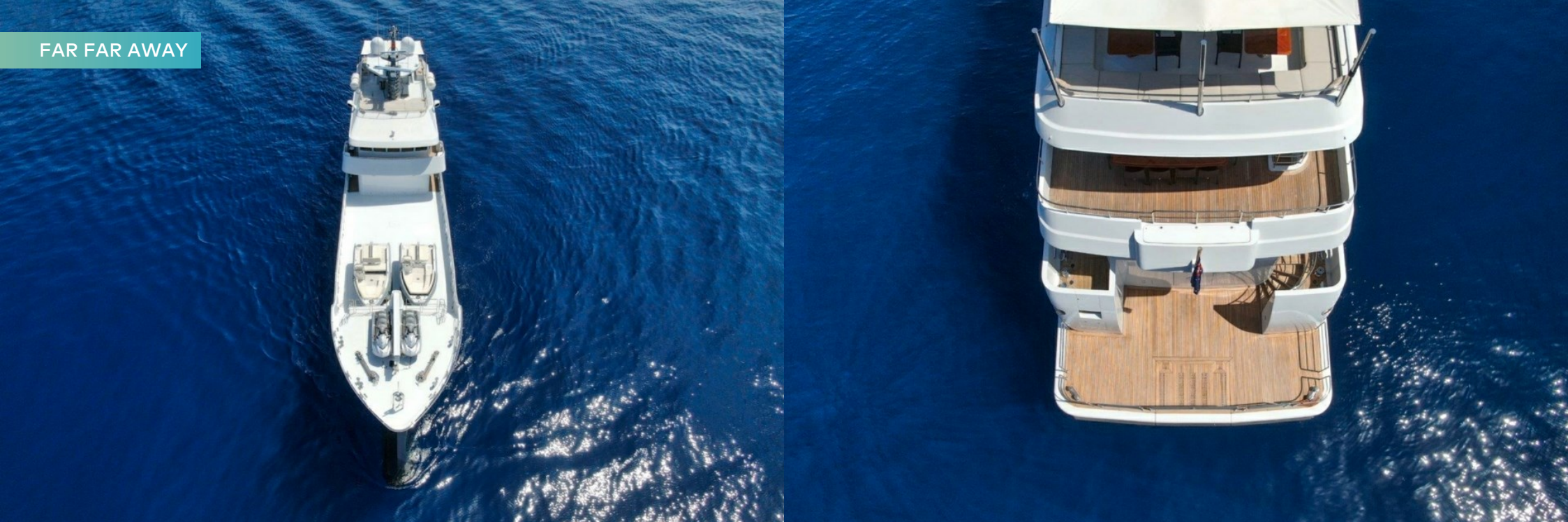


BURGESS

Discover the difference.
burgessyachts.com



FAR FAR AWAY



BURGESS

Discover the difference.
burgessyachts.com



FAR FAR AWAY

APERÇU.

FAR FAR AWAY is an expedition-style motor yacht with a length of 46.9m. The yacht's builder is Inace from Brazil who delivered superyacht FAR FAR AWAY in 2012. The superyacht has a beam of 7.92m, a draft of 2.44m and a volume of 391 GT.

The explorer yacht features exterior design by Luiz de Basto Designs, while her interior was penned by Luiz de Basto Designs, with naval architecture by INACE Yachts. Up to 15 guests are accommodated on board the superyacht FAR FAR AWAY, and she also features accommodation for 9 crew members including the captain. FAR FAR AWAY has a steel hull and aluminium superstructure. She is powered by 2 Caterpillar Inc engines, which give her a cruising speed of 10 knots and a maximum speed of 12 knots. The yacht carries 90,000 liters of fuel on board, and 13,706 liters of water. She has worldwide cruising abilities given her impressive 8,000nm range at 10 knots.

Refit projects including improved range and storage allow her to be at sea for three months without stopping in port.

She features a robust bow including a large area forward with a two-ton crane to store two sizeable tenders and large storage volumes for long-range cruising.

Principales caractéristiques

Comfortable accommodation for 15 guest and nine crew members

Boasts an impressive 8,000 nm range at 10 knots

Features ample tender storage space in the bow including a heavy duty crane for lifting

Recent refit projects include reconstruction of all onboard systems and interior spaces

BURGESS

WORLD CLASS. WORLD WIDE.

London +44 20 7766 4300	Monaco +377 97 97 81 21	New York +1 212 223 0410	Miami +1 305 672 0150	Singapore +65 9665 8990	Beverly Hills +1 310 424 5112	Palma +34 971 495 413	Athens +30 210 967 1661
	Dubai +971 4 425 5874	Phuket +66 7623 9739	Hong Kong +852 6496 2094	Tokyo +81 46 738 8612	Sydney +61 499 945 557	Mumbai +91 98211 67253	

La publicité de ce(s) navire(s) dans des publications imprimées, sur Internet ou sur tout autre support n'est pas autorisée sans l'autorisation écrite préalable de Burgess.
Toutes les informations sont données de bonne foi et sont considérées comme exactes, mais elles ne peuvent être garanties.

Dernière mise à jour : 11 mars 2024