

EXTRA TIME



EXTRA TIME

OVERVIEW.

Modern and sophisticated, EXTRA TIME awaits your arrival to provide a lavish escape for you and your closest friends and family. With her clean, smart, light contemporary interior decor, EXTRA TIME exudes elegance.

Tailored to provide the ultimate luxury onboard experience, EXTRA TIME has stunning areas. These include the vast C-shaped al fresco lounge area that encompasses the upper aft deck, the raised forward jacuzzi surrounded by sun pads on the sun deck and a semi-shaded cockpit al fresco lounge area. All provide the perfect setting for relaxation and socialising.

Her main deck master suite, accessed from the guest lobby through the private office, offers unparalleled comfort. The full-beam master suite is equipped with alcove window seats to starboard, a dressing table, and a walk-in wardrobe to port. The suite features his and hers en suite bathrooms and an adjoining shower room, ensuring the utmost privacy and convenience.

The lower deck, provides four stunning guest suites. Comprising two twin-berth suites and two double VIP suites, all are equipped with en suite bathrooms, providing guests with beautiful luxurious accommodation and unmatched comfort.

The main deck's saloon is a large spacious lounge area. Floor-to-ceiling windows on each side run along its length, creating a light, bright, and welcoming space to relax or engage in conversation.

Ascending to the upper deck, the sky lounge offers large picture windows, offering occupants elevated views between watching a movie or. A sofa seating area faces a large hidden TV, while to starboard is a games table, providing social entertainment options for guests.

The sundeck is the perfect place to enjoy the sunshine and sea breeze, featuring another large al fresco lounge area. Forward is a relaxed dining area and a wet bar, ideal for social gatherings. Additionally, a raised jacuzzi and sunpad space await, ensuring guests can bask in luxury while enjoying panoramic views of the surrounding seascape. Alternatively, EXTRA TIME's foredeck offers an open al fresco lounge area with seating, sunpads and far-reaching views.

When not relaxing on board there's a wide array of water sports equipment available, including two jetskis, an e-surfboard, an e-foil board, a windsurfer, and three SeaBobs, ensuring guests have plenty of options to enjoy the water in style and comfort. For on-shore excursions, there are also two e-bikes as well.

Key features

New to the charter market

Recently built

Beach club at sea level

Flexible cabin configurations

Exercise equipment

Shaded deck dining and deck areas

Jacuzzi on the sun deck

Zero speed stabilisers to reduce any rolling motion while at anchor

EXTRA TIME

Aerial view - Rendering



Sun deck jacuzzi - Rendering



Sun deck - Rendering



Sun deck - Rendering



EXTRA TIME

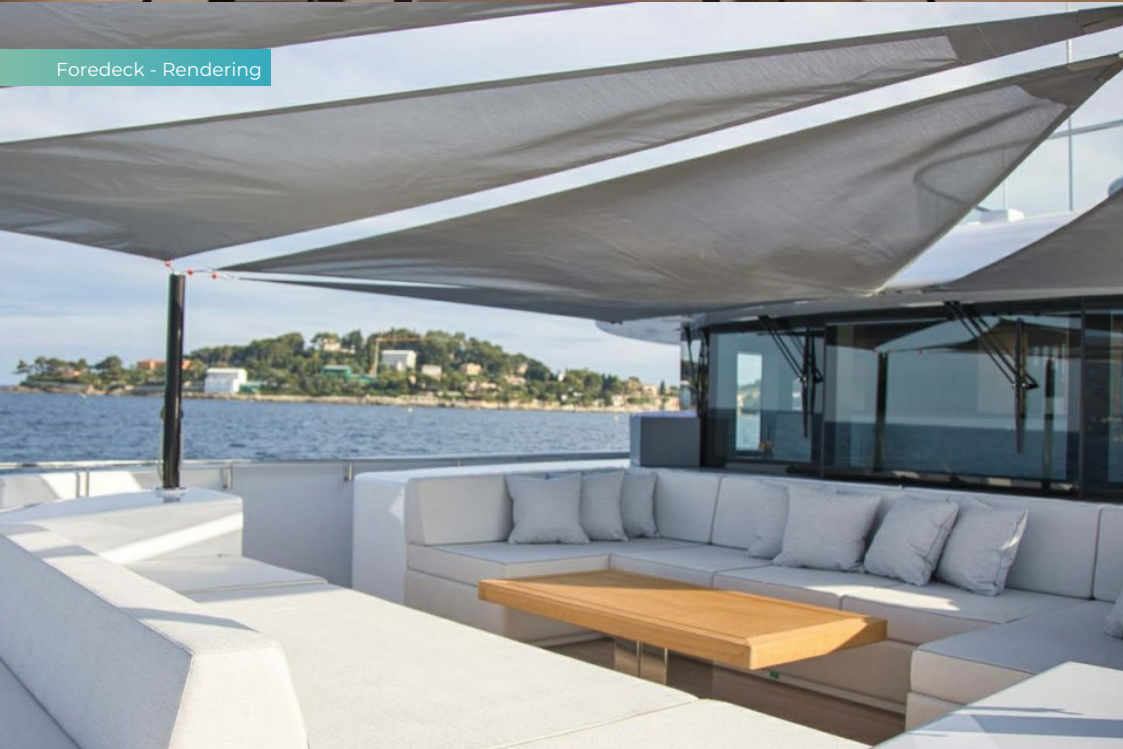
Upper deck dining area - Rendering



Main deck aft - Rendering



Foredeck - Rendering

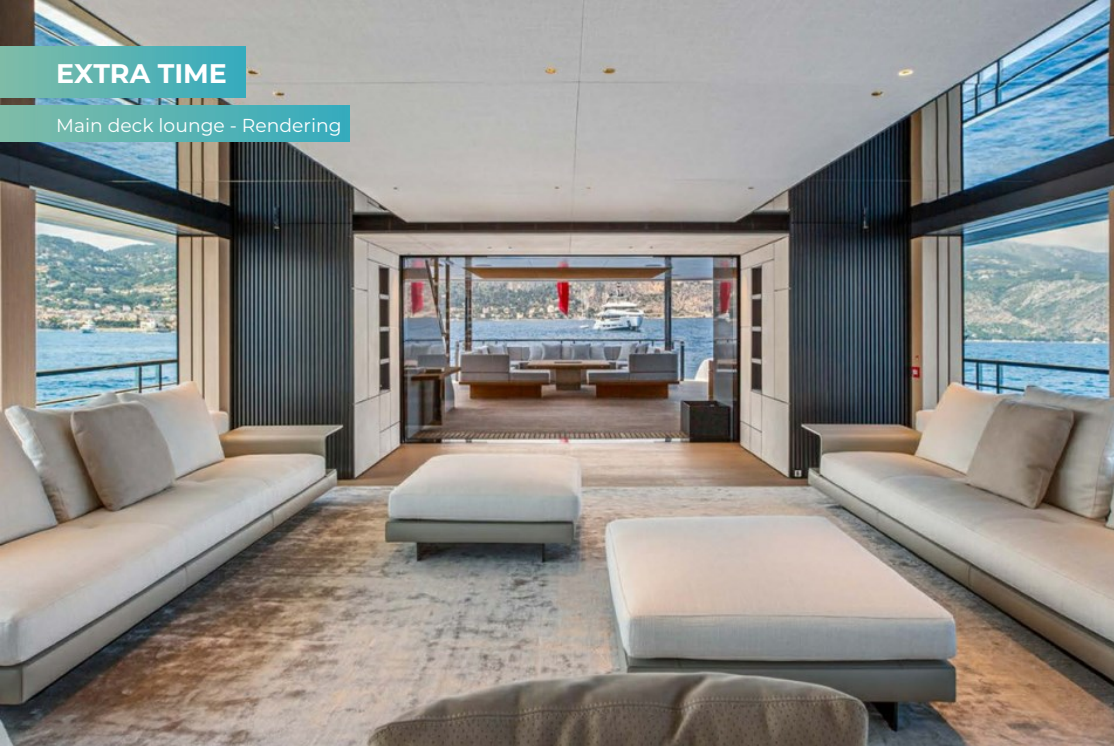


Beach club - Rendering

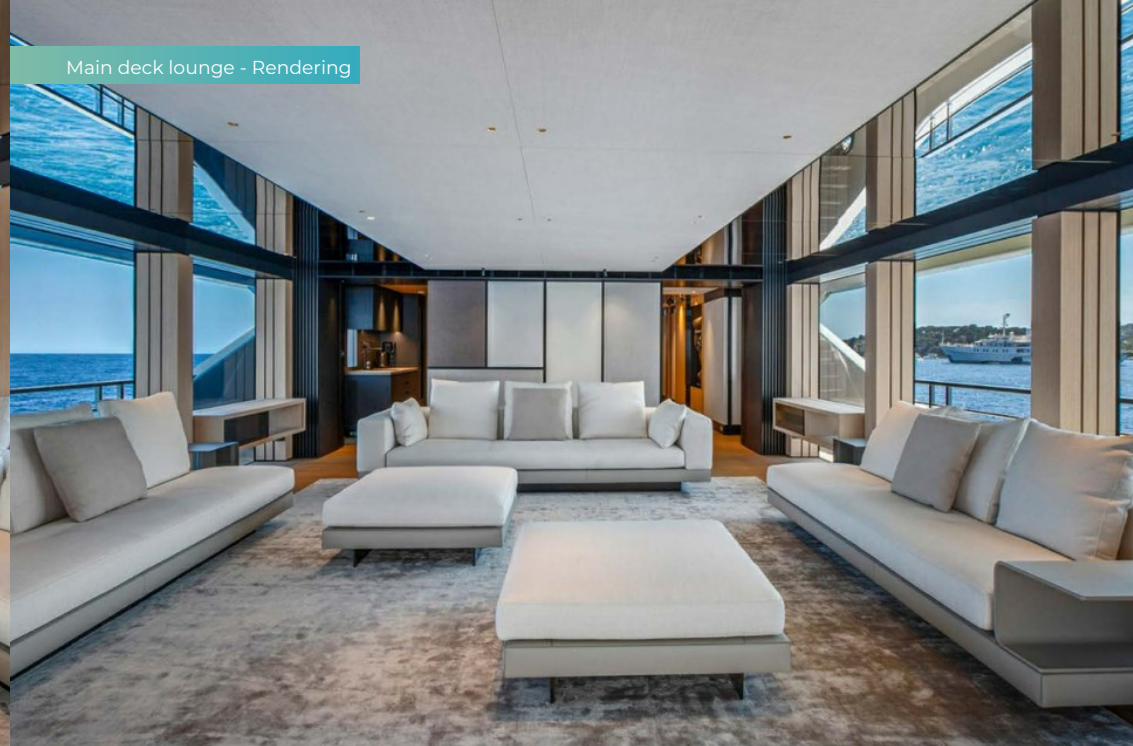


EXTRA TIME

Main deck lounge - Rendering



Main deck lounge - Rendering



Main deck lounge - Rendering



Sky lounge - Rendering



EXTRA TIME

Main deck master cabin - Rendering



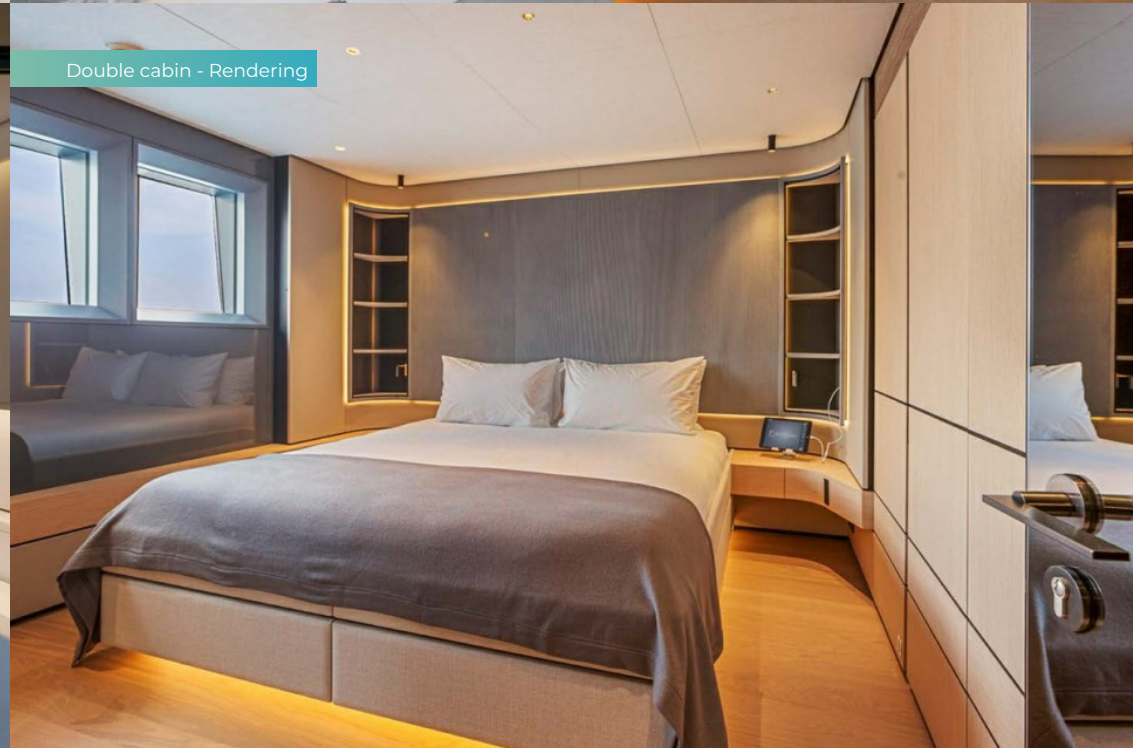
Main deck master cabin - Rendering



Master shower room en suite - Rendering



Double cabin - Rendering



EXTRA TIME

Double cabin - Rendering



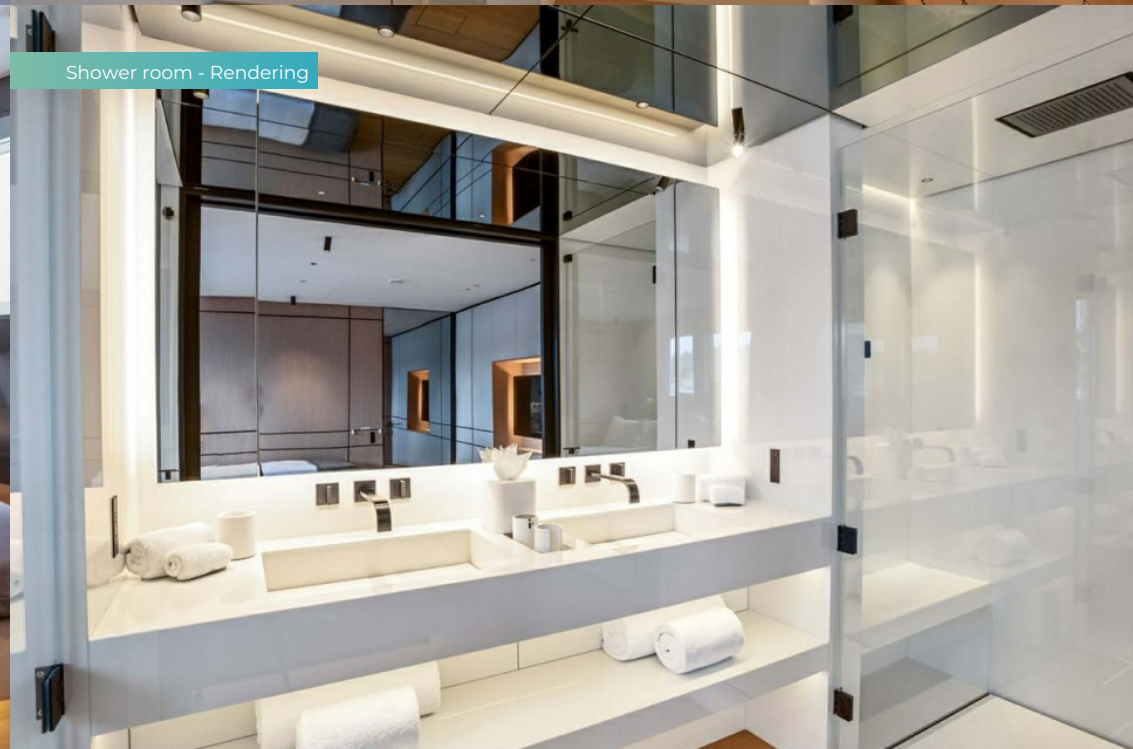
Guest shower room en suite - Rendering



Double cabin - Rendering



Shower room - Rendering



EXTRA TIME

Twin cabin - Rendering



Twin cabin - Rendering



Stern view - Rendering



Cruising - Rendering



EXTRA TIME

SPECIFICATION.



Length
44.3m (145.2ft)



Built
2024, Conrad Shipyard, Poland



Interior designer
m2atelier



Beam
8.9m (29.2ft)



Draft
2.5m (8.2ft)



Gross tonnage
497



Cruising speed
11 knots



Maximum speed
12 knots



Fuel consumption at cruising speed
120 litres per hour



Engines
2 x 700hp Caterpillar



Guests
10



No. of guest cabins
5 (3 x double, 2 x double/twin)



Crew
9

[View yacht on website](#)



EXTRA TIME

TENDERS & TOYS



1 × Tender



1 × Deck jacuzzi



2 × Waverunners



1 × Stand up jetski



3 × SeaBobs



1 × eFoil



1 × Jetsurf



Windsurfer



Surfboard

Williams 625 jet drive, 2 x waverunners, Jetsurf, E-foil, windsurfer, E-bikes, 3 x Seabobs

EXTRA TIME

FITNESS & WELLNESS



Exercise balls



Free weights



Training bench



Yoga mats

EXTRA TIME

COMMUNICATION & ENTERTAINMENT



Wi-Fi internet access



Starlink



Speaker systems



Streaming services

BURGESS

WORLD CLASS. WORLD WIDE.

London +44 20 7766 4300	Monaco +377 97 97 81 21	New York +1 212 223 0410	Miami +1 305 672 0150	Singapore +65 9665 8990	Beverly Hills +1 310 424 5112	Palma +34 971 495 413	Athens +30 210 967 1661
Dubai +971 4 425 5874	Phuket +66 7623 9739	Hong Kong +852 6496 2094	Tokyo +81 46 738 8612	Sydney +61 499 945 557	Mumbai +91 98211 67253	Shanghai +86 159 0162 1898	Rio de Janeiro +55 21 2553-3238
Aspen +1 970 710 2294							

Advertising of these vessel(s) in printed publications, on the internet or in any other medium is not permitted without prior written permission from Burgess. All particulars are given in good faith and are believed correct but they cannot be guaranteed.

Last updated: 20 May 2025