

ETERNAL SPARK



OVERVIEW.

If you want to make a statement to your guests, this is the yacht for you. Delivered in 2024, ETERNAL SPARK features playfully bold, contemporary interiors with asymmetric spaces, lots of polished steel, strong colours and plenty of glass.

It's sure to impress, especially the stairwell with its central glass sculpture shimmering in natural light from the jacuzzi above. As well as style, there's plenty of substance too, with a gym, sauna, beach club, jacuzzi, movie theatre and two tenders including a custom-made 10m chase tender.

Yours is the sumptuous main deck master suite, which spans the full width of the yacht. You have an office to catch up on emails, a dressing room and his and hers en suites sharing a large shower room. When you're ready for the day, join your guests on the bridge deck aft where the chef has rustled up freshly baked pastries, a selection of fruits, eggs just how you love them and whatever else your heart might desire.

Down at the beach club, the crew has set up all the toys and they can't wait to show you how to get the most out of them. For thrills, you can play with Sea-Doos, SeaBobs, e-foils and all sorts of tows. For something a little more contemplative, there are SUPs and snorkelling gear so you can explore above and below the waves – or you can cleanse the pores in the sauna next to the beach club.

For lunch, you and your guests head up to the bridge deck aft dining area, shaded from the midday sun by the deck above. From one anchorage to the next, you can catch a movie in the cinema, enjoy a soak in the glass-backed jacuzzi, relax on the main deck aft lounge or watch the Mediterranean scenery drift by from the foredeck sofa and sun pads.

Up on the sundeck the music's playing and the cocktails are shaking as the sun sets and the night awaits. Will you take the tender to explore the culture and cuisine in the quaint little fishing port nearby, dine surrounded by nature on the bridge deck aft with drinks flowing from the sit-up bar or dress to impress to enjoy an epic banquet in the main deck's formal dining room? The choice is yours.

As the night draws to a close, your guests retire to the lower deck where their versatile, family-friendly accommodation awaits. There is a VIP suite running the full width of the yacht, two double cabins and two convertible cabins, doubles or twins as required, all of which are en suite.

Key features

New to the charter market

Recently built

Spa facilities: sauna, ice fountain

Beach club at sea level

Two master cabins

Flexible cabin configurations

Exercise equipment

10m chase tender

Cinema room

Outdoor cinema screen

Shaded deck dining and deck areas

Jacuzzi on the sun deck

Zero speed stabilisers to reduce any rolling motion while at anchor

ETERNAL SPARK

At anchor



Stern view



Main deck aft lounge



Main deck lounge



ETERNAL SPARK

Main deck dining area



Master office



Main deck foyer



Main deck master cabin



ETERNAL SPARK

Main deck master cabin



Master shower room en suite



Lower deck VIP (second master) cabin



Lower deck VIP (second master) cabin



ETERNAL SPARK

VIP shower room en suite



Lower deck double cabin



Lower deck double cabin



Double cabin shower room en suite



ETERNAL SPARK

Lower deck twin cabin



Twin cabin shower room en suite



Upper deck aft lounge



Upper deck dining area



ETERNAL SPARK

Upper deck seating area



Upper deck sky lounge



Upper deck sky lounge



Upper deck sky lounge bar



ETERNAL SPARK

Sun deck aft lounge



Sunloungers



Sun deck bar and jacuzzi



Beach club



ETERNAL SPARK

At anchor



Aerial view



At anchor



BURGESS

Discover the difference.
burgessyachts.com



ETERNAL SPARK

SPECIFICATION.



Length
50m (163.8ft)



Built
2024, Bilgin Yachts, Turkey



Interior designer
Enrico Lumini/Michele Dragoni



Beam
9.3m (30.5ft)



Draft
2.6m (8.5ft)



Gross tonnage
498



Cruising speed
12 knots



Maximum speed
17 knots



Fuel consumption at cruising speed
260 litres per hour



Engines
2 x 1,449hp Caterpillar



Guests
12



No. of guest cabins
6 (4 x double, 2 x twin)



Crew
9

[View yacht on website](#)



ETERNAL SPARK

TENDERS & TOYS



1 x Towed tender



1 x Tender



RYA training centre for jetskis & waverunners



2 x Waverunners



2 x SeaBobs



2 x eFoils



4 x Stand up paddleboards



Wakeboard



Inflatable tows



Snorkelling gear

ETERNAL SPARK

FITNESS & WELLNESS

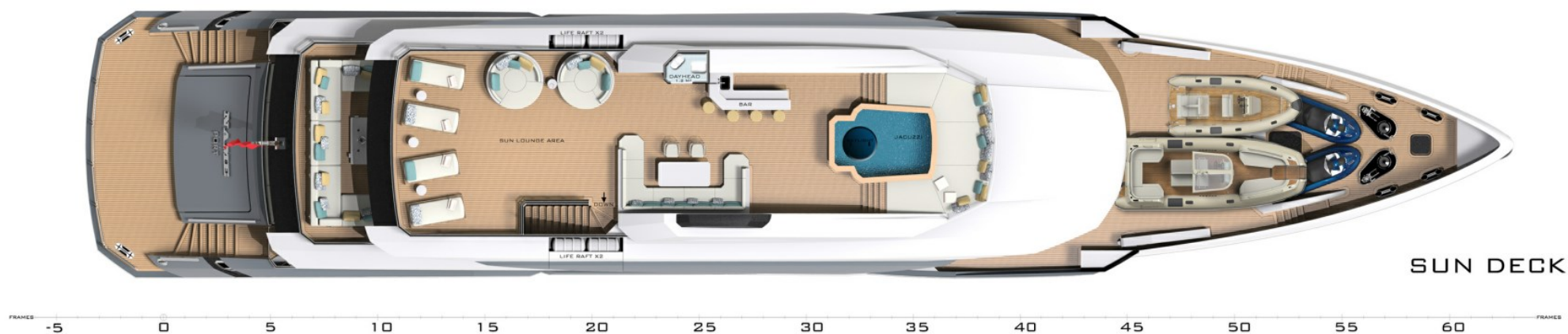


Yoga mats

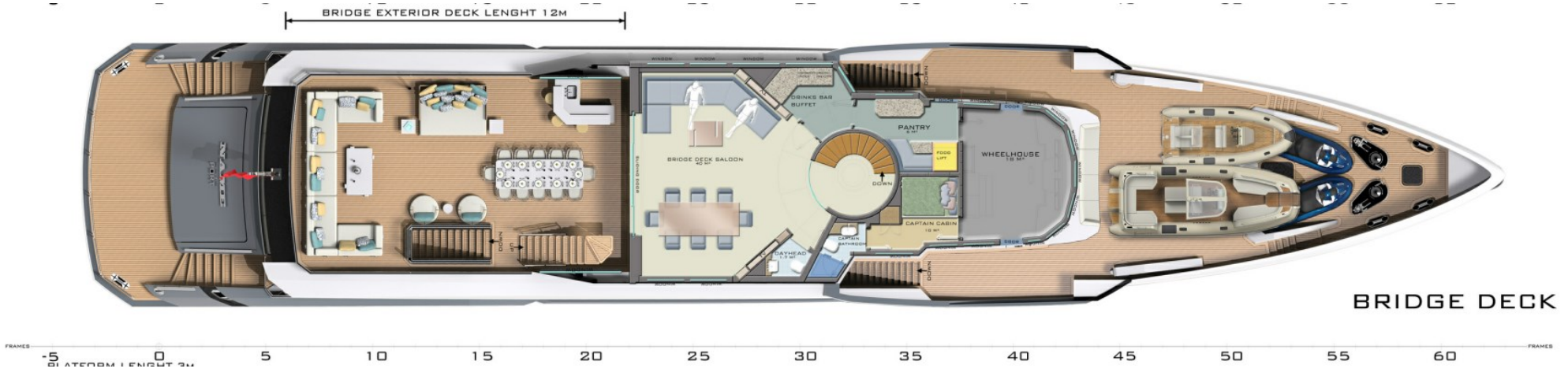


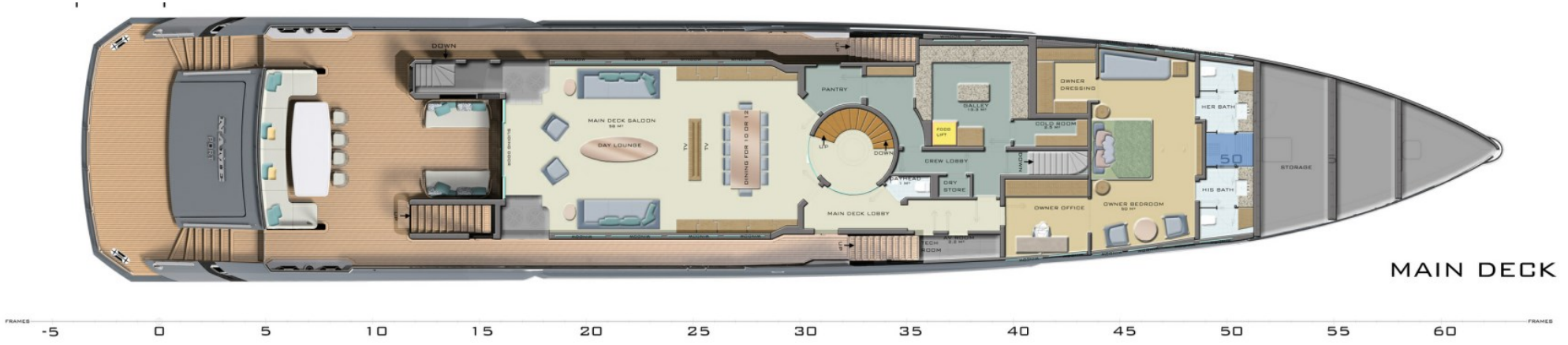
Sauna





SUN DECK

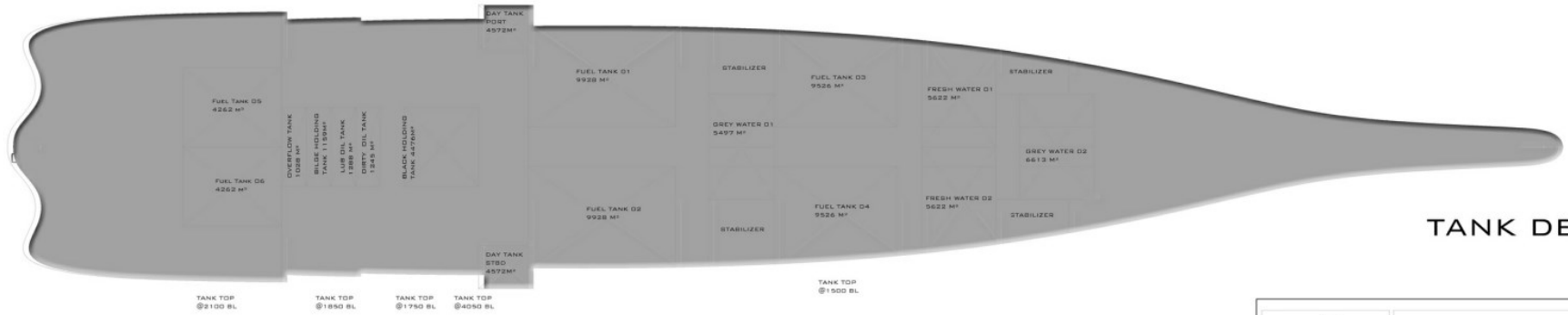




MAIN DECK







TANK DECK

	VOLUME (M³)	WEIGHT (TONS)
TOTAL FUEL	56575	47,523
TOTAL FRESH WATER	11244	11,244
TOTAL GRAY WATER	11800	11,8
BLACK HOLDING	3850	3,85

	GENERAL ARRANGEMENT PLAN	
PROJECT: BILGIN 50	DESIGNED BY: D.Y.D.	DATE: 06.04.2020
YARD NO: NB79	CHECKED BY: E.G.	CLASS: RINA
DWG NO: D.Y.D.30-20100	DRAWN BY: Y.G.A	CLASS NO: 100085
REV NO: 03	SCALE: 1/75	SIZE: A0
THIS DRAWING HAS BEEN REGISTERED AS THE INTELLECTUAL PROPERTY OF ÖZGÜN YACHT DESIGN LTD. AND MAY NOT BE USED, COPIED, MODIFIED OR CIRCULATED WITHOUT ÖZGÜN YACHT DESIGN'S WRITTEN CONSENT.		

BURGESS

WORLD CLASS.
WORLD WIDE.

London +44 20 7766 4300	Monaco +377 97 97 81 21	New York +1 212 223 0410	Miami +1 305 672 0150	Singapore +65 9665 8990	Beverly Hills +1 310 424 5112	Palma +34 971 495 413	Athens +30 210 967 1661
Dubai +971 4 425 5874	Phuket +66 7623 9739	Hong Kong +852 6496 2094	Tokyo +81 46 738 8612	Sydney +61 499 945 557	Mumbai +91 98211 67253	Shanghai +86 187 0898 6800	Rio de Janeiro +55 21 2553-3238

Advertising of these vessel(s) in printed publications, on the internet or in any other medium is not permitted without prior written permission from Burgess. All particulars are given in good faith and are believed correct but they cannot be guaranteed.

Last updated: 10 December 2024