

# ESMERALDA

---





ESMERALDA

# OVERVIEW.

**ESMERALDA harks back to a golden era of superyachts and, thanks to her high-bulwarked side decks, at 61.5m (201.8ft) she has a modest ship-like feel when stepping aboard. From the moment you do, her long-serving and highly experienced crew will be on hand to make your holiday on this grand lady exceedingly special.**

ESMERALDA and her attentive crew can host 12 guests (and 6 supernumeraries) in 11 spacious suites located on the main deck and upper (boat) deck. The main deck guest suites are forward of the yacht's vast main saloon bar and lounge area. To starboard, there are three twin-berth suites to port ESMERALDA's large formal dining area. Further forward there are four more twin-berth suites and a delightful double suite.

The upper (boat) deck has a further three more roomy double-berth suites. Two are double VIP suites with separate lounges and en suite bathrooms and the third is the opulent master suite. The master suite has separate his and hers bathrooms, a dressing room, a lounge area and a private gym.

ESMERALDA has three gorgeous dining areas for you to choose from. Whichever you choose you can be assured of a memorable meal for all the right reasons. On the main deck, her formal dining area has seating for up to 18 guests. Her main aft deck has a social arrangement of two semi-circular seats facing each other around two tables that have an infill to make a single round table. For al fresco dining the dining area on the bridge deck is perfect. Three decks up with a buffet bar close by and a few steps from the bridge deck lounge and bar, this space can be set for breakfast as two separate tables or as one long dinner table for lavish banquets.

When ESMERALDA chef is not delighting you and your guests with their culinary delights, there is plenty more to keep you occupied during your time on board. There are a host of tenders, four SeaDoo PWC and water sports equipment: towable inflatables, skis, and wakeboards, scuba gear, paddleboards and an inflatable island. For those looking to relax there is the sun deck. Here you'll find the central raised jacuzzi and plenty of sun loungers to soak up the sun from.

ESMERALDA's classic lines exude elegance wherever she goes, how better to arrive than stepping from the main aft deck of this most gracious of yachts.

## Key features

---

**Regularly maintained**

---

**Exercise equipment**

---

**Two VIP cabins**

---

**Jacuzzi on the sun deck**

---

ESMERALDA

Sun deck



Sun deck jacuzzi



Bridge deck bar



Bridge deck dining area





ESMERALDA

Bridge deck dining area



Bridge deck aft



Main deck aft dining area



Main deck lounge





ESMERALDA

Main deck lounge



Bridge deck lounge



Main deck dining room



Master cabin





ESMERALDA

Toys



Waverunners



BURGESS

Discover the difference.  
burgessyachts.com



ESMERALDA

# SPECIFICATION.



Length  
**61.5m (201.7ft)**



Built  
**1981 (refitted 2000), Codecasa, Italy**



Interior designer  
**De Jorio**



Beam  
**10m (32.8ft)**



Draft  
**4.5m (14.8ft)**



Gross tonnage  
**1,002**



Cruising speed  
**12 knots**



Maximum speed  
**14 knots**



Fuel consumption at cruising speed  
**400 litres per hour**



Engines  
**2 x 1,500hp MAK**



Guests  
**18**



No. of guest cabins  
**11 (4 x double, 7 x twin)**



Crew  
**19**

[View yacht on website](#)



ESMERALDA

# TENDERS & TOYS



5 × Tenders



1 × Deck jacuzzi



RYA training centre for jetskis & waverunners



4 × Waverunners



2 × SeaBobs



2 × Stand up paddleboards



Wakeboard



Kneeboard



Waterskis



Inflatable tows



Scuba diving equipment



Snorkelling gear



ESMERALDA

# FITNESS & WELLNESS



Cross trainer



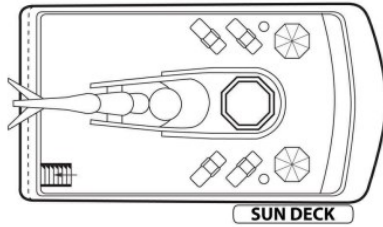
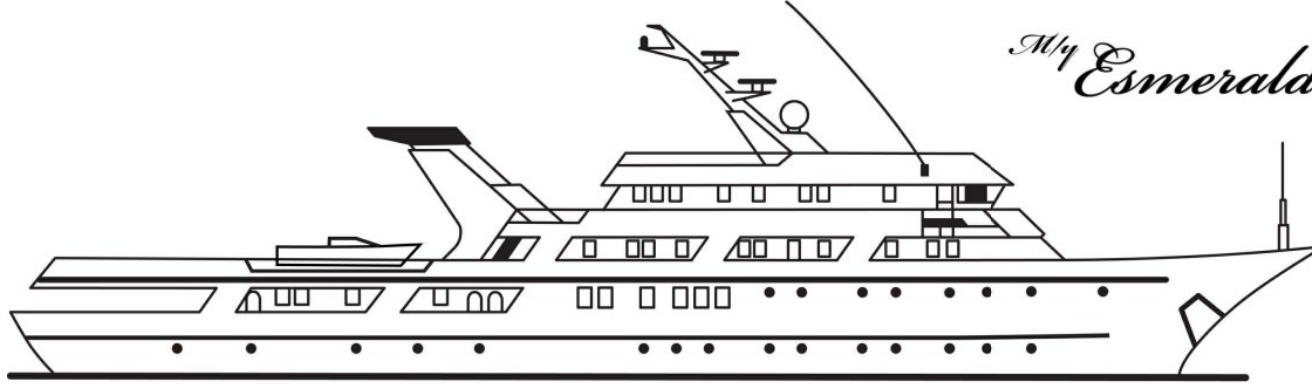
Treadmill



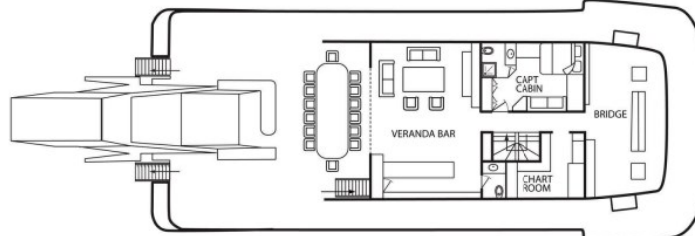
Vertical climber







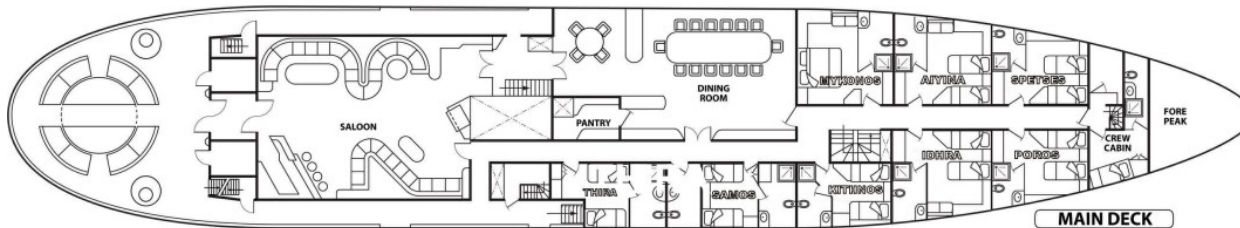
SUN DECK



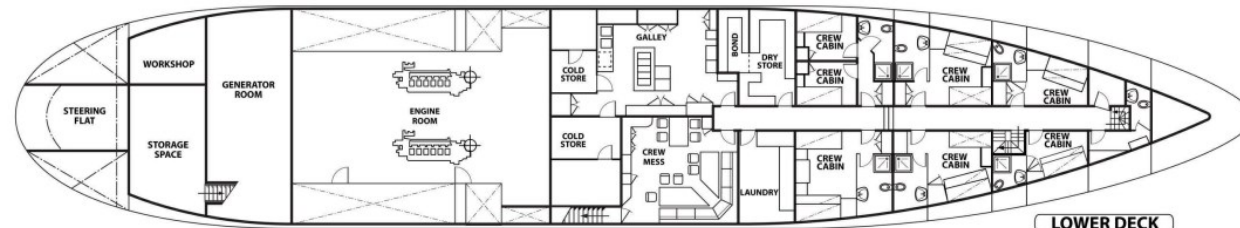
BRIDGE DECK



BOAT DECK



MAIN DECK



LOWER DECK



# BURGESS

# WORLD CLASS. WORLD WIDE.

|                                   |                                   |                                    |                                 |                                   |   |                                      |   |
|-----------------------------------|-----------------------------------|------------------------------------|---------------------------------|-----------------------------------|---|--------------------------------------|---|
| <b>London</b><br>+44 20 7766 4300 | <b>Monaco</b><br>+377 97 97 81 21 | <b>New York</b><br>+1 212 223 0410 | <b>Miami</b><br>+1 305 672 0150 | <b>Singapore</b><br>+65 9665 8990 | <b>Beverly Hills</b><br>+1 310 424 5112 | <b>Palma</b><br>+34 971 495 413      | <b>Athens</b><br>+30 210 967 1661         |
| <b>Dubai</b><br>+971 4 425 5874   | <b>Phuket</b><br>+66 7623 9739    | <b>Hong Kong</b><br>+852 6496 2094 | <b>Tokyo</b><br>+81 46 738 8612 | <b>Sydney</b><br>+61 499 945 557  | <b>Mumbai</b><br>+91 98211 67253        | <b>Shanghai</b><br>+86 187 0898 6800 | <b>Rio de Janeiro</b><br>+55 21 2553-3238 |

Advertising of these vessel(s) in printed publications, on the internet or in any other medium is not permitted without prior written permission from Burgess. All particulars are given in good faith and are believed correct but they cannot be guaranteed.

Last updated: 10 December 2024