

ENTOURAGE



ENTOURAGE

APERÇU.

A brand new 60-metre (197ft) Amels yacht making her charter début, ENTOURAGE is an exciting prospect for the coming season and a rare opportunity to experience the absolute state of the art in contemporary yachting style. Her gorgeous interior is the epitome of soothing elegance and her sculpted exterior shape is a striking, original design by Espen Øino that points the way to the future and gives her an assertive presence on the water.

One thing that's special is the sheer attention to detail. The proportions of each space on board are expertly judged, from the masterful layout of the sundeck to the graceful steps leading up from the spacious swim platform, and the standard of finish is superb. But it's the smallest details that really impress. The sills of the sliding glass doors on all three main levels of the yacht are completely flush with the floors, so the flow between inside and outside spaces is seamless. Glass windbreaker screens take the edge off the breeze without interrupting the view.

If the sundeck is your favourite outdoor space on board, you're in for a treat. This one has a mezzanine layout that creates a subtle sense of separation between its various zones while ensuring that they still feel connected. The forward section, which doubles as a helipad, is raised and set up with sun loungers – a perfect spot when you want to enjoy the cooling effect of the sea breeze, with the very best view on board. Down five steps is a jacuzzi plunge pool flanked by sunbeds, a shaded lounge, a ten-seat dining table that's ideal for brunch en route to an anchorage, and then a more sheltered sunbathing zone facing aft.

The bridge deck has a sheltered outdoor dining area in deep shade, which flows into the intimate upper deck lounge. The main deck aft is a lovely place to relax, overlooking the beach club and bathing platform where a full range of watersports toys are deployed from a floating dock with a safe seawater pool. There's an extensive inventory of gym equipment too, and her three tenders include a 42ft chase boat and an amphibious beach landing craft.

All the way forward on the main deck, your full-beam master suite awaits. This includes a fold-out balcony terrace, his-and-hers bathrooms, a private lounge in the main cabin and an adjoining suite that's ideal for kids. The other four guest cabins are amidships on the lower deck with direct access to the beach club – ideal for an early morning dip.

Principales caractéristiques

New to the charter market

Flexible cabin configurations

Spa facilities: hammam

Balcony off the master cabin

42' HCB Lujo towed tender

Shaded deck dining and deck areas

Jacuzzi on the sun deck

Zero speed stabilisers to reduce any rolling motion while at anchor

ENTOURAGE

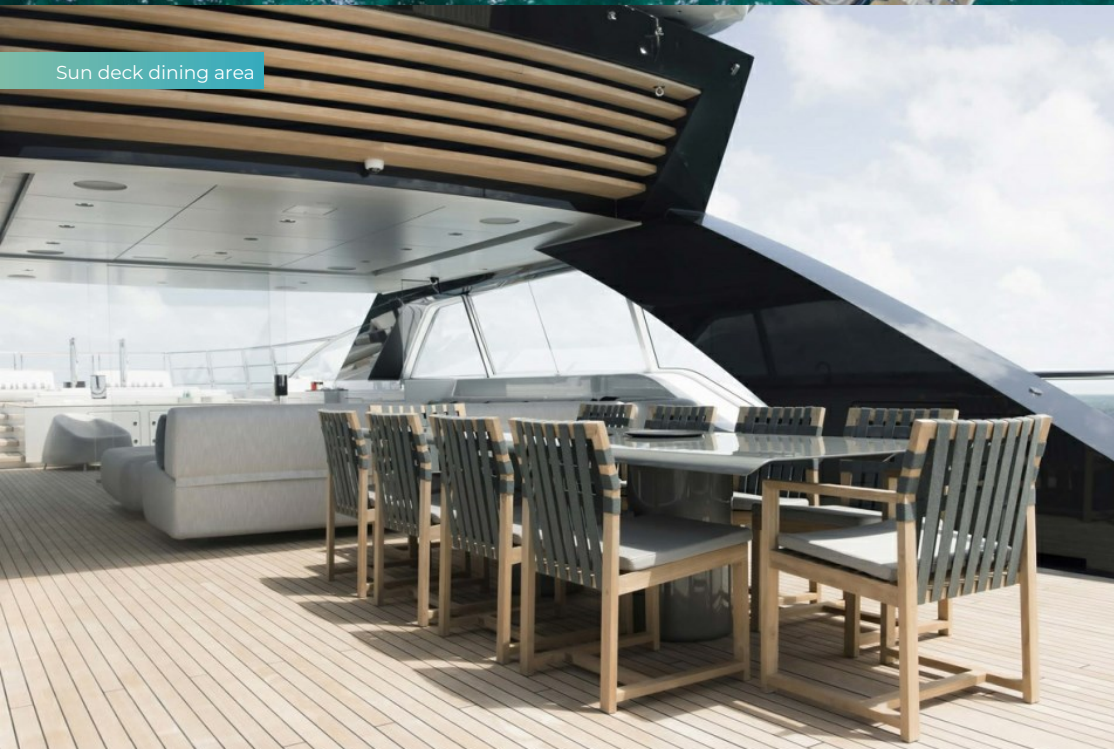
Aerial view



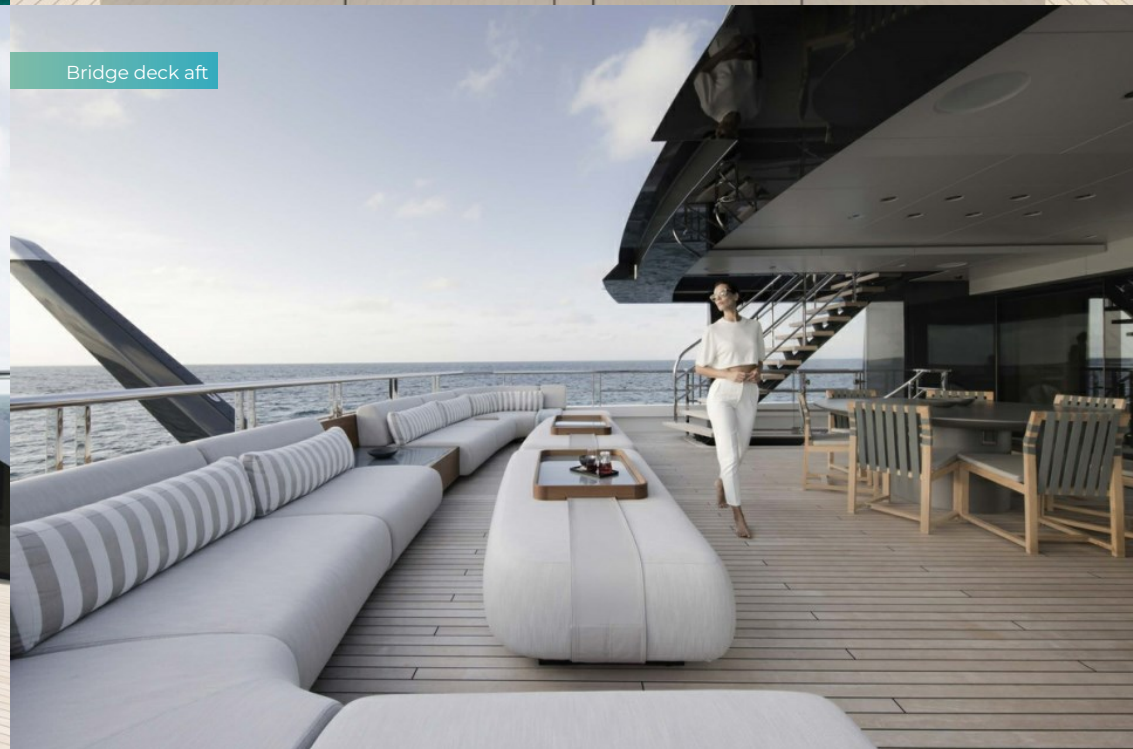
Sun deck jacuzzi



Sun deck dining area



Bridge deck aft



BURGESS

Discover the difference.
burgessyachts.com



ENTOURAGE

Main deck forward



Swim platform



Swim platform



Swim platform



BURGESS

Discover the difference.
burgessyachts.com



ENTOURAGE

Main deck lounge



Sky lounge



Sky lounge



Main deck master cabin



ENTOURAGE

Guest bathroom en suite



Toys



Toys



Stern view



BURGESS

Discover the difference.
burgessyachts.com



ENTOURAGE

Stern view



ENTOURAGE

SPECIFICATIONS.



Longueur
60m



Chantier
2023, Amels, The Netherlands



Designer d'intérieur
Burdifilek



Largeur
10,4m



Tirant d'eau
3,4m



Tonnage brut
853



Vitesse de croisière
12 knots



Vitesse maximale
15,5 knots



Consommation de carburant en vitesse de croisière
80 litres par heure



Invités
12



Nb de cabines invités
6 (4 × double, 2 × double/twin, 2 × additional berths)



Équipage
14

Note

Registered under the Yacht Engaged in Trade scheme (YET). All Mediterranean charters must start in either the South of France, Monaco or Corsica. For all charters, the principal charterer must be a non-EU resident.

[Voir le yacht sur le site](#)

[Regarder la vidéo du yacht](#)



ANNEXES & JEUX NAUTIQUES



1 × Towed tender



2 × Tenders



1 × Deck jacuzzi



Anti-jellyfish pool



Inflatable platform



2 × Waverunners



2 × SeaBobs



1 × Flyboard



2 × eFoils



Wakeboard



Wakesurf



Waterskis



Inflatable tows



Fishing gear



Snorkelling gear

ENTOURAGE

REMISE EN FORME & BIEN-ETRE



Cross trainer



Free weights



Multi gym



Pilates reformer



Training bench



Treadmill

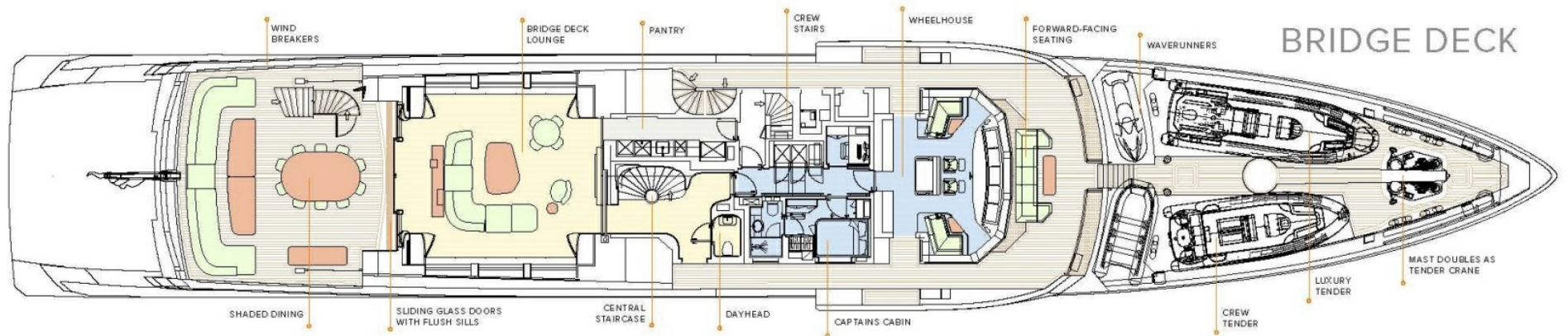
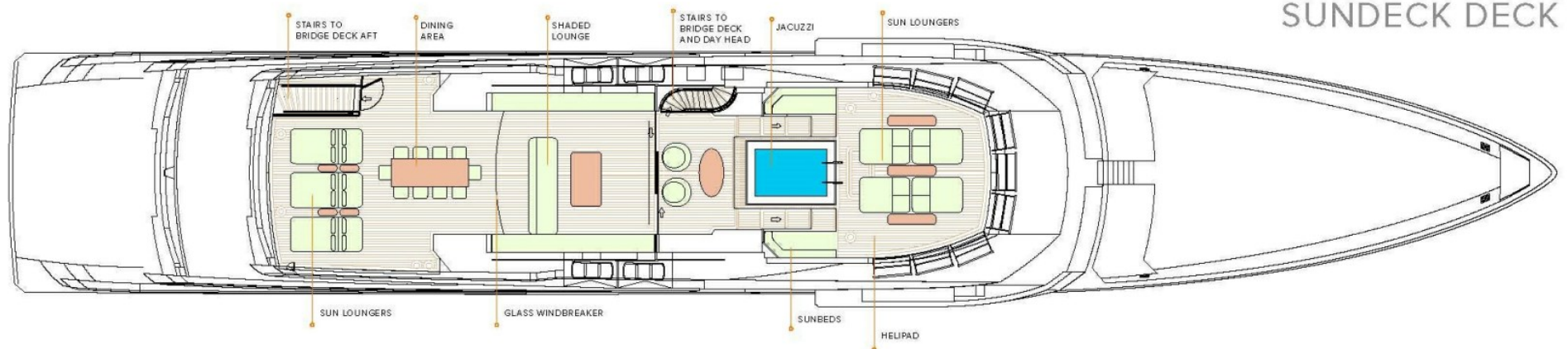


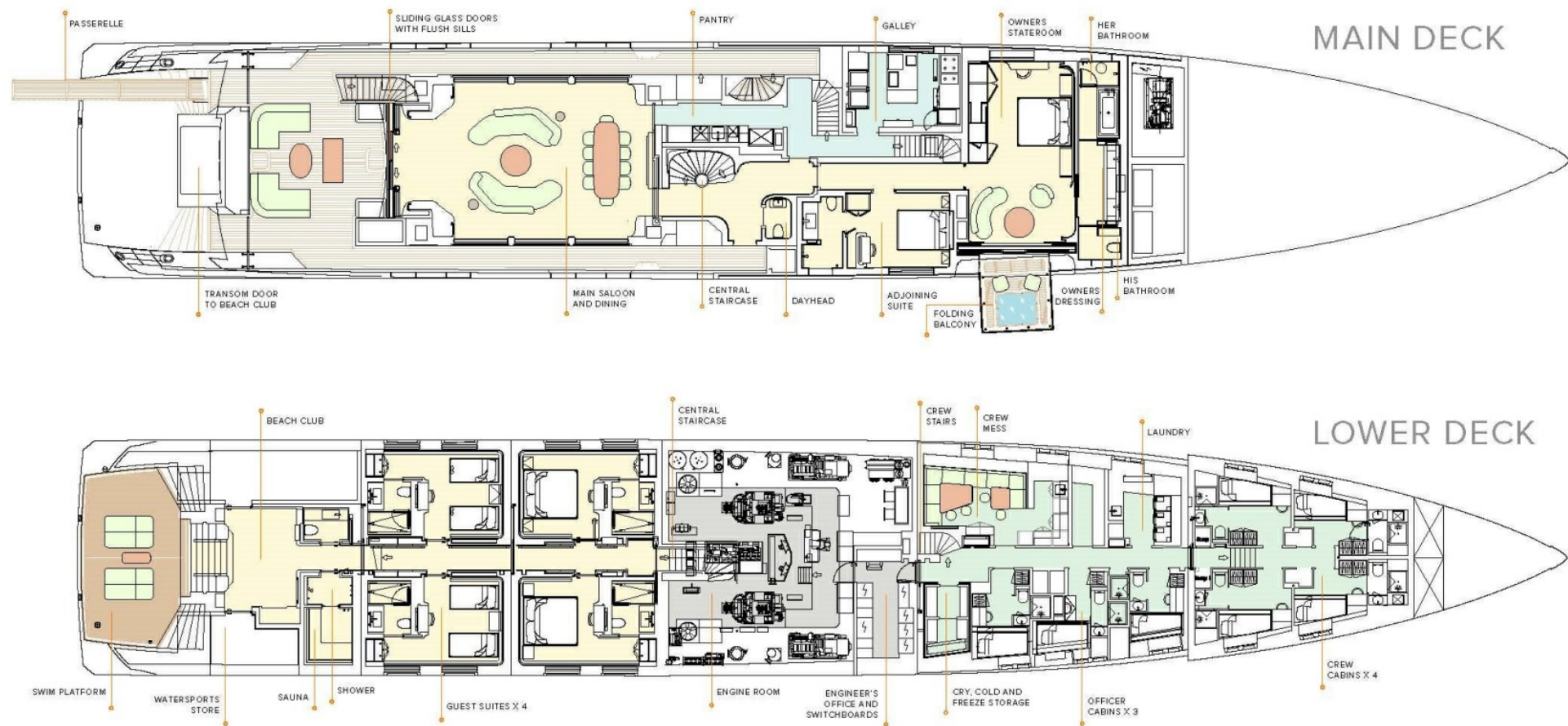
Upright stationary bike



Yoga mats

GENERAL ARRANGEMENT





BURGESS

WORLD CLASS. WORLD WIDE.

London +44 20 7766 4300	Monaco +377 97 97 81 21	New York +1 212 223 0410	Miami +1 305 672 0150	Singapore +65 9665 8990	Beverly Hills +1 310 424 5112	Palma +34 971 495 413	Athens +30 210 967 1661
Dubai +971 4 425 5874	Phuket +66 7623 9739	Hong Kong +852 6496 2094	Tokyo +81 46 738 8612	Sydney +61 499 945 557	Mumbai +91 98211 67253	Shanghai +86 187 0898 6800	Rio de Janeiro +55 21 2553-3238
Aspen +1 970 710 2294							

La publicité de ce(s) navire(s) dans des publications imprimées, sur Internet ou sur tout autre support n'est pas autorisée sans l'autorisation écrite préalable de Burgess.
Toutes les informations sont données de bonne foi et sont considérées comme exactes, mais elles ne peuvent être garanties.

Dernière mise à jour : 28 janvier 2025