

ENERGY



ENERGY

SPECIFICATION.



Asking price
EUR 199,000,000



Built
2022, Amels, The Netherlands



Length
77.8m (255.2ft)



Beam
14m (45.9ft)



Draft
3.8m (12.5ft)



Gross tonnage
2,885



Cruising speed
13.5 knots



Maximum speed
17 knots



Range
5,000 nm at 13.5 knots



Flag
Cayman Islands



Lying
West Mediterranean



Class
Lloyd's Register (LR)



Exterior designer
Espen Oeino International



Interior designer
Zuretti Design



Construction
Hull - Steel, Superstructure - Aluminium, Deck - Teak



Crew
27



Guests
14



Cabins
7 (7 × double)



Engines
2 × 3,004hp MTU



Generators
3 × Scania



Propulsion
Twin screw diesel yacht

[View yacht on website](#)

[Watch yacht video](#)



ENERGY



BURGESS

Discover the difference.
burgessyachts.com



ENERGY



BURGESS

Discover the difference.
burgessyachts.com



ENERGY



BURGESS

Discover the difference.
burgessyachts.com



ENERGY



BURGESS

Discover the difference.
burgessyachts.com



ENERGY



BURGESS

Discover the difference.
burgessyachts.com



ENERGY



BURGESS

Discover the difference.
burgessyachts.com



ENERGY



BURGESS

Discover the difference.
burgessyachts.com



ENERGY



BURGESS

Discover the difference.
burgessyachts.com



ENERGY



BURGESS

Discover the difference.
burgessyachts.com



ENERGY



BURGESS

Discover the difference.
burgessyachts.com



ENERGY



BURGESS

Discover the difference.
burgessyachts.com



OVERVIEW.

Some yachts are destined to break the mould, to find a new path to greatness. The 77.8m (255.2ft) full-custom yacht ENERGY, delivered by Amels in 2022, is one such yacht. ENERGY has a steel hull and aluminium superstructure constructed to Lloyd's classification and the brief for exterior designer Espen Oeino and interior designer Francois Zuretti was to defy convention and find ways to connect with the ocean. They exceeded all expectations.

The top deck's helipad forward is a versatile space outside heliops – sun lounge, al fresco yoga studio with wraparound ocean views, a space for elevated entertainment served by the statement bar, assorted lounging areas and dayhead inside. The jacuzzi and sun pads aft allow guests to bask in the sun.

The bridge deck music lounge is designed for acoustic excellence. There is a Steinway baby grand piano and marble-topped bar. The entertainment continues in the open-air lounge aft, guests can find some privacy on the sofa forward of the bridge or keep going on the walkaround sidedecks to appreciate the anchorage from every possible vantage point.

Through full-height glass, the owner's deck bedroom overlooks, and has direct access to, a private foredeck terrace, which has an intimate lounge beneath the overhang, a jacuzzi and a mesmerising marble firepit amid armchairs and chaises longues. Walkaround sidedecks lead past a private lounge and bar, which opens on three sides to let in the sound and scent of the ocean, to open-air dining for up to 18 guests and one of the largest pools on any yacht, anywhere.

On the main deck, the ocean connection extends to both VIP suites, each of which has full-height sliding glass walls opening onto a private balcony at the forward end of extra-wide sidedecks. Moving aft, inside or out, you pass a boardroom-style office, martial arts room, lobby with lower- to bridge-deck glass elevator, formal dining room, two-tender boat deck and watertoy store, and an intimate waterfall lounge.

Whether your guests arrive at the lower deck's swim platform or the sea-level lobby, all four lower deck guest cabins, completing accommodation for 14 guests in seven suites across three decks, have step-free access past the beauty salon to the beach club and wellness spa aft. There is a huge sea terrace outside the gym and massage room to port, and to starboard a sauna and hammam either side of a relaxation room with another sea terrace.

Twin 3,046hp MTU diesel engines give her a top speed of 17 knots, and cruising speed of 13.5 knots and an easy transatlantic range of 5,000nm at economical speed. Two sets of stabilisers ensure comfort on arrival.

Key features

Massive internal volume of 2,885 GT

Presents as good as new in truly immaculate condition

Comfortable and luxurious accommodation for 14 guests in 7 cabins

Lower to bridge deck glass elevator

Substantial upper deck aft pool

Stunning exterior design by Espen Oeino

Very spacious walk-around side decks

Only ever lightly used by one owner

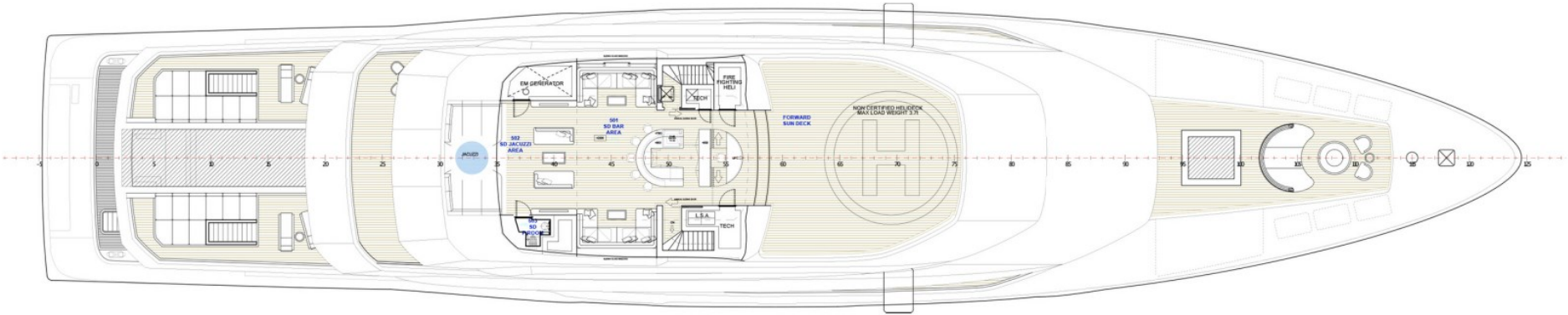
Large beach club and spa

Spacious gym with fold-out sea terrace

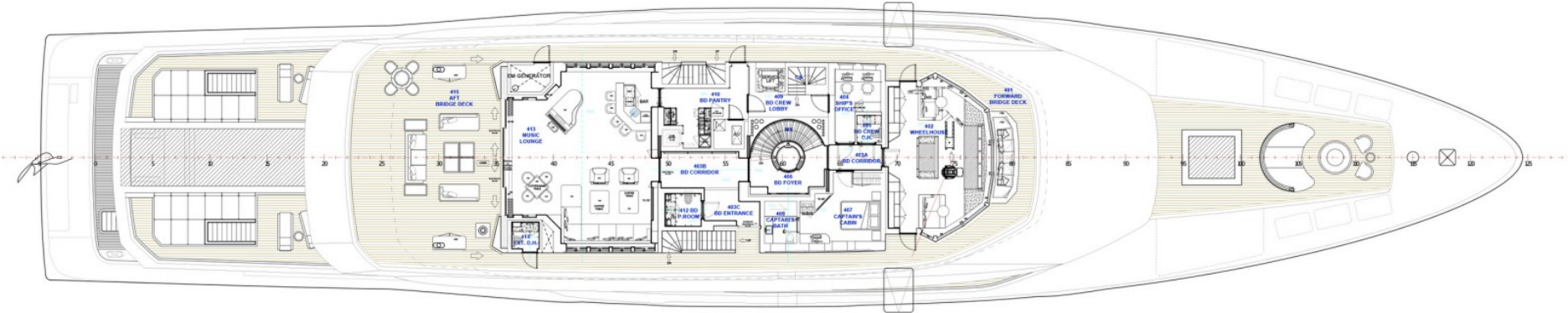
Tenders

10m Pascoe tender with 2 x 500hp engines,
9.8m Ribeye tender with 2 x 250hp Yanmar engines

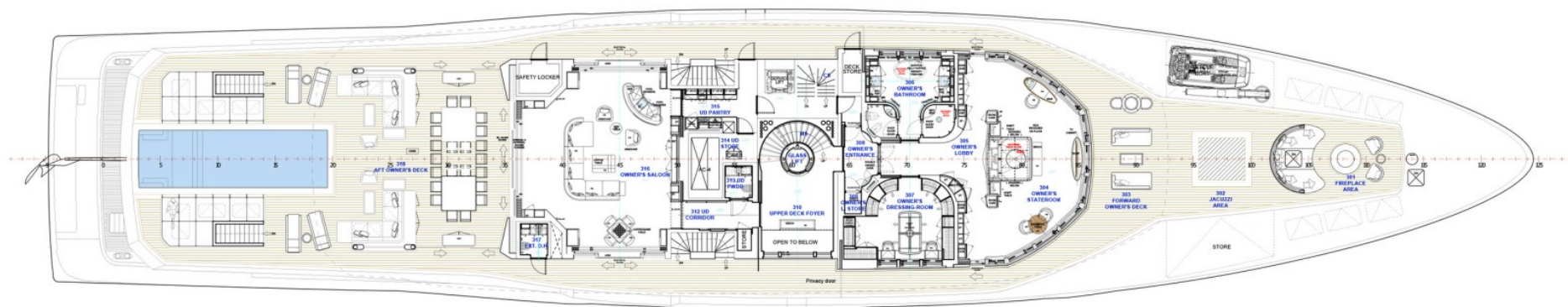
TOP DECK



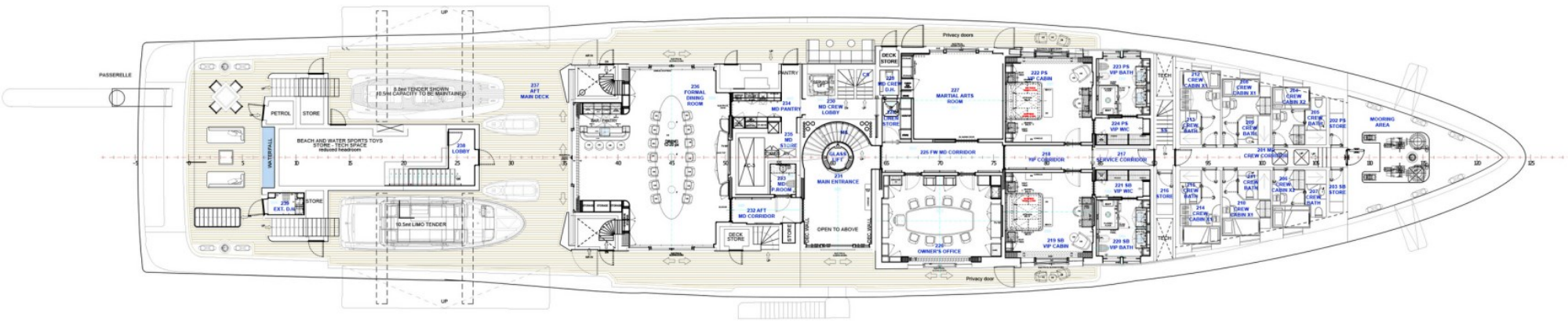
BRIDGE DECK



UPPER DECK



MAIN DECK

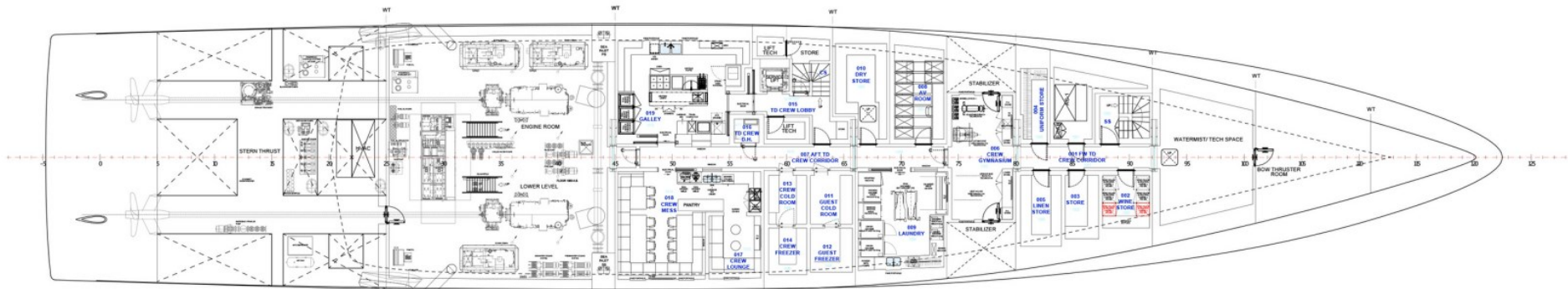


LOWER DECK



1-LOWER DECK

TANK DECK



BURGESS

WORLD CLASS. WORLD WIDE.

London +44 20 7766 4300	Monaco +377 97 97 81 21	New York +1 212 223 0410	Miami +1 305 672 0150	Singapore +65 9665 8990	Beverly Hills +1 310 424 5112	Palma +34 971 495 413	Athens +30 210 967 1661
Dubai +971 4 425 5874	Phuket +66 7623 9739	Hong Kong +852 6496 2094	Tokyo +81 46 738 8612	Sydney +61 499 945 557	Mumbai +91 98211 67253	Shanghai +86 159 0162 1898	Rio de Janeiro +55 21 2553-3238
Aspen +1 970 710 2294							

Advertising of these vessel(s) in printed publications, on the internet or in any other medium is not permitted without prior written permission from Burgess. All particulars are given in good faith and are believed correct but they cannot be guaranteed.

Last updated: 24 June 2025