

EMIR



EMIR

APERÇU.

EMIR is the last word in first-class chartering for very large groups. Recently refreshed and offering an immense array of activities and facilities, with lounging and dining spaces to fit everyone together, she is like a floating palace with a warm, modern air.

Kick off your morning with a workout in the bridge deck's outdoor gym, then make your way to breakfast on the upper deck aft, which has comfy sofas and a choice of tables to provide an informal start to the day.

There is a vast choice of watersports, from safe, child friendly options like the inflatable obstacle course and enormous waterslide to faster-paced toys like jetskis and flyboards. There is also scuba equipment available for guests who wish to dive a nearby attraction.

If you prefer to keep dry, the main deck aft lounge provides a perfect beach-like atmosphere and a great view of the action. Alternatively, for a moment of sanctuary, take tea on the bridge deck's exterior lounge with its sumptuous armchairs and unrestricted panoramas of the seascape.

Lunch is served on the upper deck aft, with a family-style spread prepared by the passionate chef. Your only concern is how to enjoy the afternoon. The sun deck is an excellent choice, with its jacuzzi surrounded by sumptuous sun pads, sunloungers and sofas. Or head ashore in one of the two limousine tenders for a shopping excursion in a local port town. Indulgence is always a good idea, so a visit to the beauty salon is a must; perhaps for a relaxing massage or to prepare for the evening's festivities with a blow dry and manicure.

After an afternoon of treasure hunts and a BBQ dinner on a nearby deserted beach, the children are ushered into the cinema room for the latest Pixar movie, mocktails and popcorn before bed.

Meanwhile, in the VIP lounge, music from the baby grand piano creates the perfect evening atmosphere, topped off with creative canapes and bespoke cocktails. Everyone makes their way to the formal dining room, with tables spectacularly decorated, to enjoy a tasting menu dinner accompanied by superb wine pairings.

EMIR's immaculate interior, updated in 2018, is a chic blend of whites, creams and warm woods accented with pops of colour from modern art. She is one of the few superyachts able to welcome groups of up to 30 in 14 cabins, including a handsomely decorated upper deck owner's suite, a bridge deck executive suite, 4 VIP suites, 5 doubles and 3 twins.

Principales caractéristiques

Recently refitted

Hydraulic swim platform

Spa facilities: beauty and massage room

Exercise equipment usable on bridge aft exterior area

Can accommodate up to 28 guests

Four VIP cabins

Shaded deck dining & deck areas

Jacuzzi on the sun deck

Zero speed stabilisers to reduce any rolling motion while at anchor

EMIR

Main deck dining



Sun deck



Upper deck dining



Upper deck



EMIR

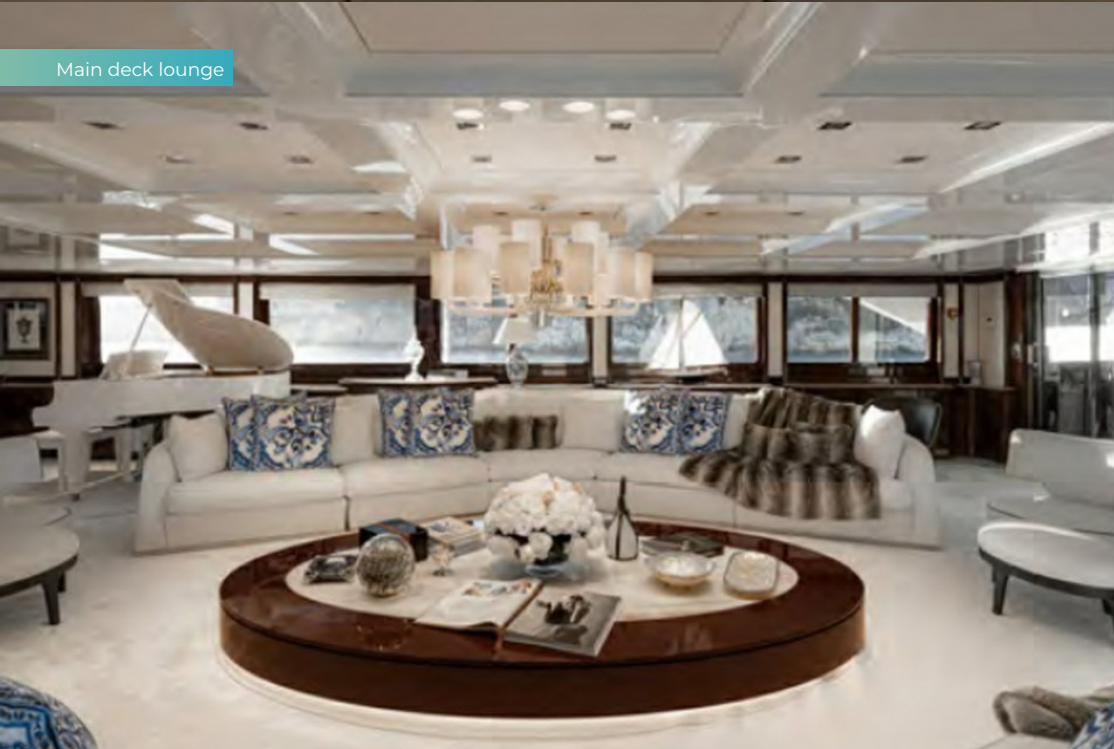
Main deck



Main deck lounge



Main deck lounge



Cinema



EMIR

Spa



Master cabin



Double cabin



Double cabin



BURGESS

Discover the difference.
burgessyachts.com



EMIR

SPECIFICATIONS.



Longueur
82,5m



Chantier
2004 (rebuilt 2004, refitted 2022), Mitsubishi Heavy Ind, Japan



Designer d'intérieur
Studio Vafiadis



Largeur
11,6m



Tirant d'eau
4,4m



Tonnage brut
1 809



Vitesse de croisière
12 knots



Vitesse maximale
14 knots



Consommation de carburant en vitesse de croisière
380 litres par heure



Moteurs
2 x 2 000hp Yanmar



Invités
28



Nb de cabines invités
14 (11 x double, 3 x twin)



Équipage
28

[Voir le yacht sur le site](#)



EMIR

ANNEXES & JEUX NAUTIQUES



1 x Tender



1 x Deck jacuzzi



3 x Waverunners



2 x SeaBobs



1 x Flyboard



1 x Jetsurf



2 x Kayaks



4 x Stand up paddleboards



Wakeboard



Waterskis



Trampoline



Waterslide



Inflatable tows



Scuba diving equipment



Snorkelling gear



Fishing gear

EMIR

REMISE EN FORME & BIEN-ETRE



Free weights



Resistance trainer



Rowing machine



Treadmill



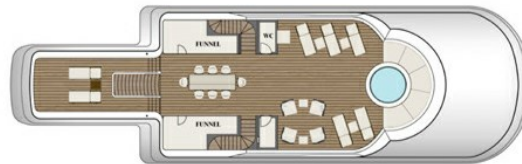
Beauty salon



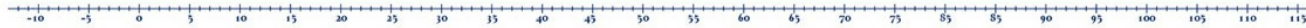
Massage room



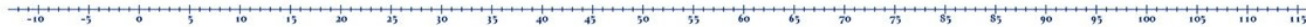
Sauna



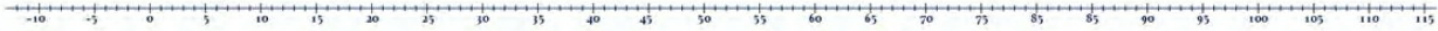
SUN DECK
No6



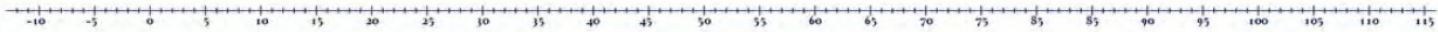
BRIDGE DECK
No5

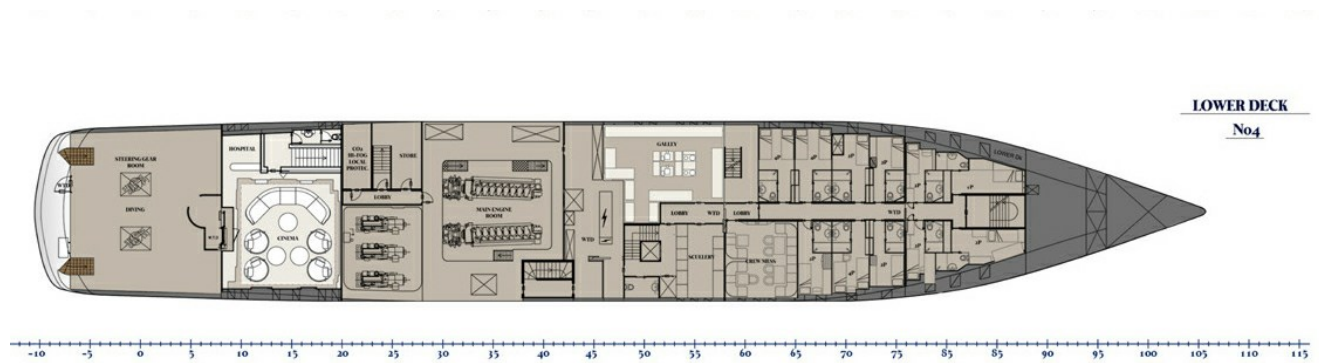


UPPER DECK



MAIN DECK





BURGESS

WORLD CLASS. WORLD WIDE.

London +44 20 7766 4300	Monaco +377 97 97 81 21	New York +1 212 223 0410	Miami +1 305 672 0150	Singapore +65 9665 8990	Beverly Hills +1 310 424 5112	Palma +34 971 495 413	Athens +30 210 967 1661
Dubai +971 4 425 5874	Phuket +66 7623 9739	Hong Kong +852 6496 2094	Tokyo +81 46 738 8612	Sydney +61 499 945 557	Mumbai +91 98211 67253	Shanghai +86 187 0898 6800	Rio de Janeiro +55 21 2553-3238
Aspen +1 970 710 2294							

La publicité de ce(s) navire(s) dans des publications imprimées, sur Internet ou sur tout autre support n'est pas autorisée sans l'autorisation écrite préalable de Burgess.
Toutes les informations sont données de bonne foi et sont considérées comme exactes, mais elles ne peuvent être garanties.

Dernière mise à jour : 25 février 2025