

EM3



EM3

APERÇU.

The Sanlorenzo SD90 EM3 is a 27.43 m luxury motor yacht for charter designed to provide the highest standards of liveability with new solutions introduced both externally and internally that give a totally revised perception of space. The exterior design, penned by the Zuccon International Project studio, is the result of a complex stylistic research that finds a perfect balance in the shapes and volumes.

The interior design of the Sanlorenzo SD90 EM3 is curated by Patricia Urquiola who interprets the spaces, bringing her own vision on board with an approach closely linked to transformability. The SD90 spans two and a half decks and features an open flybridge that is configured with a lower deck and main deck. The bow area of the main deck is conceived as a partial full-beam providing a more spacious area inside than a traditional layout. SD90 EM3 accommodates up to 8 (+1) guests in 4 cabins. The Owner stateroom in the main deck forward, two VIP cabins in the lower deck and a twin cabin convertible in double cabin with an extra upper bed. All cabins are en suite.

Principales caractéristiques

New to the charter market

Flexible cabin configurations

A crew with local expertise

Zero speed stabilisers top reduce any rolling motion while at anchor

EM3

Aerial shot



Anchor



Bridge deck aft



Bridge deck aft



EM3

Bridge deck aft



Main deck aft



Main deck lounge



Main deck lounge



EM3

Lifestyle



Main deck lounge



Main deck master cabin



Main deck master cabin



EM3

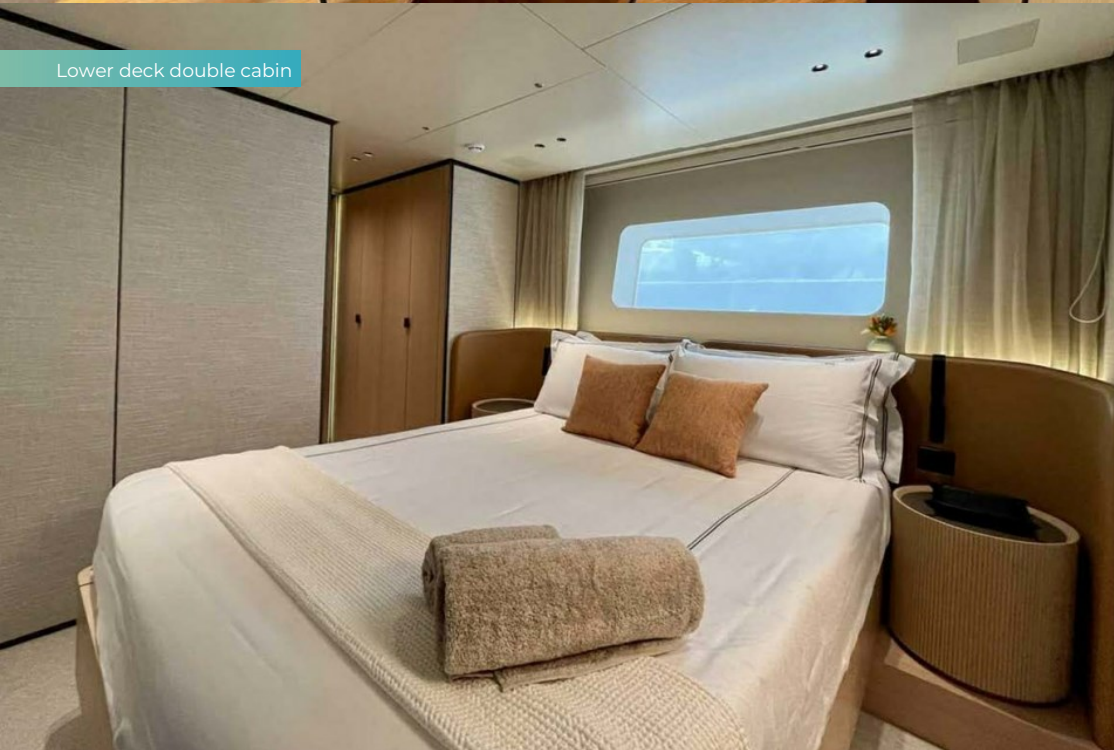
Main deck master cabin



Master bathroom en suite



Lower deck double cabin



Lower deck twin/convertible cabin



EM3

Lower deck twin/convertible cabin



Cruising



Cruising



BURGESS

Discover the difference.
burgessyachts.com



EM3

SPECIFICATIONS.



Longueur
27,3m



Chantier
2023, Sanlorenzo, Italy



Designer d'intérieur
Zuccon International Project



Largeur
7m



Tonnage brut
155



Vitesse de croisière
12 knots



Vitesse maximale
14 knots



Consommation de carburant en vitesse de croisière
180 litres par heure



Moteurs
2 x 800hp MAN



Invités
9



Nb de cabines invités
4 (3 x double, 1 x double/twin, 1 x additional berth)



Équipage
4

[Voir le yacht sur le site](#)
[Regarder la vidéo du yacht](#)



EM3

ANNEXES & JEUX NAUTIQUES



1 x Tender



2 x SeaBobs



1 x eFoil

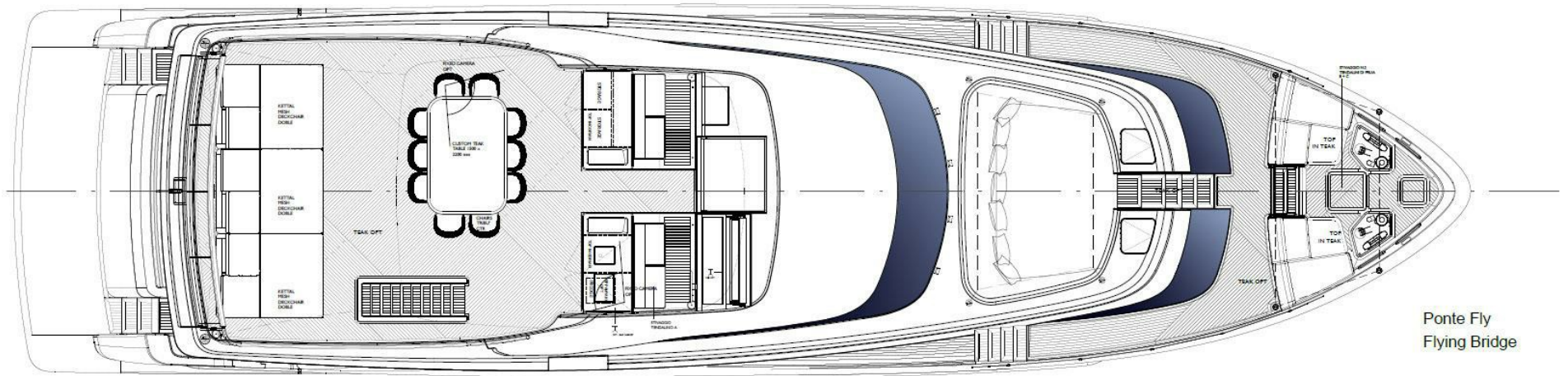


2 x Stand up paddleboards

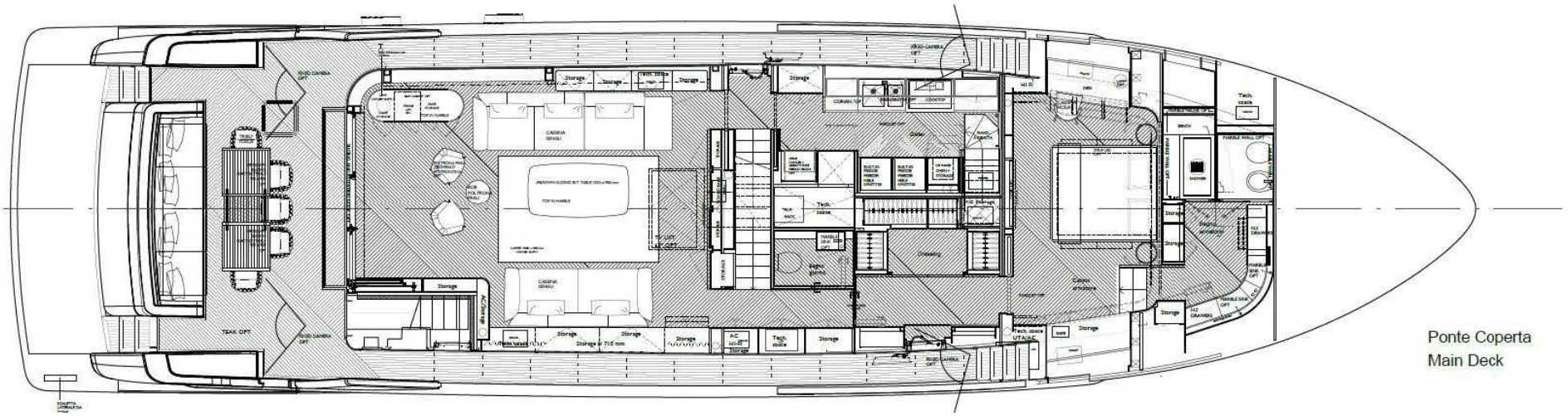


Snorkelling gear

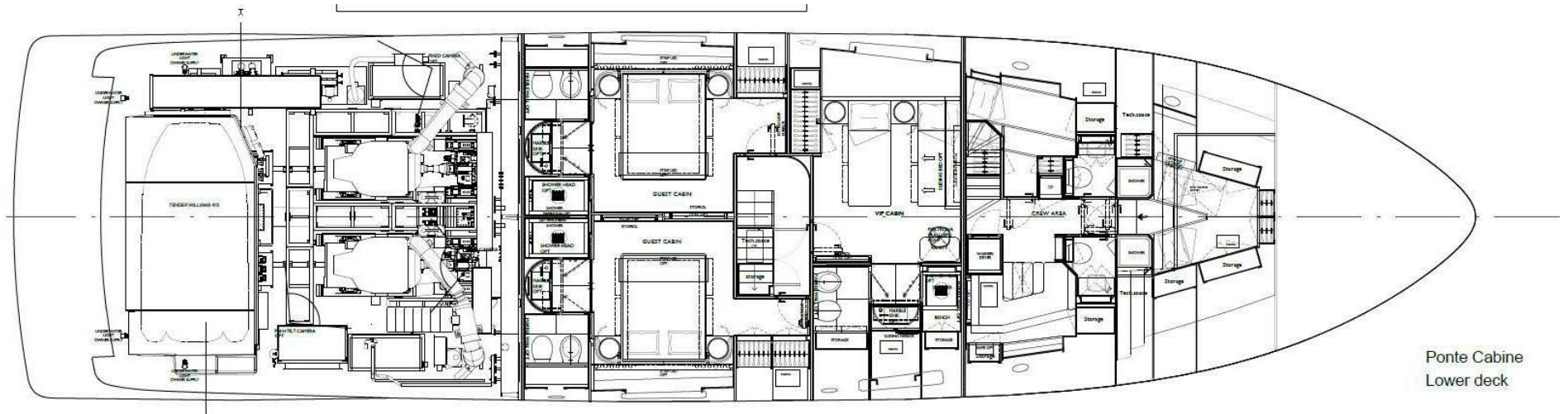




Ponte Fly
Flying Bridge



Ponte Coperta
Main Deck



Ponte Cabine
Lower deck

BURGESS

WORLD CLASS. WORLD WIDE.

London +44 20 7766 4300	Monaco +377 97 97 81 21	New York +1 212 223 0410	Miami +1 305 672 0150	Singapore +65 9665 8990	Beverly Hills +1 310 424 5112	Palma +34 971 495 413	Athens +30 210 967 1661
Dubai +971 4 425 5874	Phuket +66 7623 9739	Hong Kong +852 6496 2094	Tokyo +81 46 738 8612	Sydney +61 499 945 557	Mumbai +91 98211 67253	Shanghai +86 187 0898 6800	Rio de Janeiro +55 21 2553-3238
Aspen +1 970 710 2294							

La publicité de ce(s) navire(s) dans des publications imprimées, sur Internet ou sur tout autre support n'est pas autorisée sans l'autorisation écrite préalable de Burgess.
Toutes les informations sont données de bonne foi et sont considérées comme exactes, mais elles ne peuvent être garanties.

Dernière mise à jour : 11 février 2025