

ELENI



ELENI

APERÇU.

ELENI is the ideal gentleman's charter yacht for sailing the Western Mediterranean. Whether with family or friends, she offers spacious decks and open plan living spaces, with all the amenities and capacity of a much larger yacht - and at an excellent price point.

ELENI welcomes 10 guests aboard for your charter, in five elegant staterooms. The accommodation comprises a master suite, two double cabins and two twin cabins. This configuration gives you the maximum flexibility to ensure that everyone is comfortable.

When sailing from port to anchorage you will experience the smoothest passage as ELENI has been awarded the RINA special certification for extremely low noise and vibration levels. She also boasts zero speed stabilisers to reduce any rolling motion while at anchor. These features optimises your sailing experience so you can all relax and enjoy exploring your cruising grounds.

Refitted in 2018, she has been meticulously maintained by the current owners. Her interior is neat and sophisticated, she has high deck ceilings and has huge volume with an almost an 8m beam, very rare for a yacht of her size.

ELENI also comes with a 10m Sea Water Phantom Chase tender, a huge selling point and something that is always greatly enjoyed by guests.

Principales caractéristiques

10m Sea Water Phantom chase tender with 2 x 250hp engines

RINA special certification for extremely low noise and vibration levels

Huge volume with an almost 8m beam

High deck ceilings

Refitted fully in 2018

Zero speed stabilisers to reduce any rolling motion while at anchor

Long standing crew members

ELENI

Main deck lounge



Main deck lounge



Main deck lounge



Main deck lounge dining



ELENI

Master suite



Master suite



Master bathroom en suite



Master bathroom en suite



ELENI

Double cabin



Double cabin shower room en suite



Twin cabin



Twin cabin shower room en suite



ELENI

Sky lounge



Main deck aft dining



Bridge deck aft



Bridge deck aft dining



ELENI

Bridge deck aft



Sun deck facing aft



Sun deck forward



Sun deck facing forward



ELENI

Sun deck aft



Cruising



Aerial view



Cruising



ELENI

SPÉCIFICATIONS.



Longueur
33,7m



Chantier
2004 (refitted 2018), CBI Navi, Italy



Designer d'intérieur
Umberto Tagliavini



Largeur
8m



Tirant d'eau
2,7m



Tonnage brut
271



Vitesse de croisière
10 knots



Vitesse maximale
11 knots



Consommation de carburant en vitesse de croisière
160 litres par heure



Invités
10



Nb de cabines invités
5 (3 x double, 2 x twin)



Équipage
6

[Voir le yacht sur le site](#)

[Regarder la vidéo du yacht](#)



Annexes & jeux nautiques



1 x Towed tender



1 x Tender



Inflatable platform



2 x Underwater scooters



2 x Kayaks



4 x Stand up paddleboards



Wakeboard



Waterskis



Inflatable tows



Snorkelling gear

10m Sea Water Phantom chase tender with 2 x 250hp engine | 4.5m Novamarine tender with 40hp engine | 2 x water scooters | 4 x inflatable stand up paddleboards | 2 x inflatable kayaks | 1 x Nautibuoy (1m x 2m) | Waterskis, wakeboards & tows

Remise en forme & bien-être

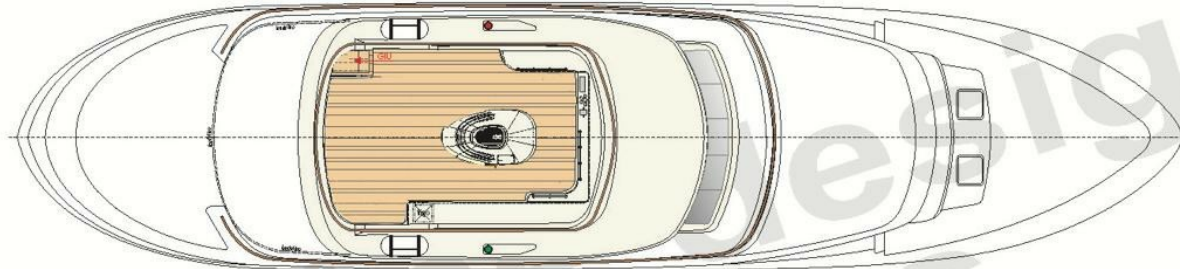


Yoga mats

4 x yoga mats

Communication et divertissement

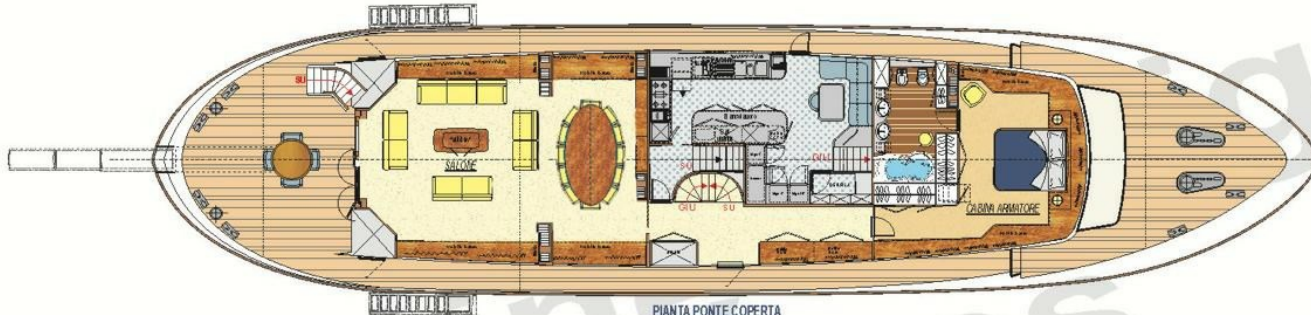
Sonos system available throughout all public areas on board (2 x speakers on each open deck to stream music) | Satellite & cellular communications facilities | VSAT | Wi-Fi internet



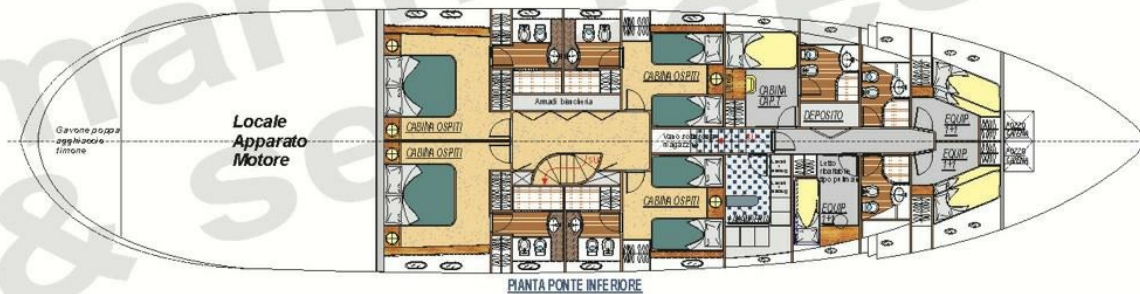
PIANTA PONTE FLY



PIANTA PONTE TIMONERIA



PIANTA PONTE COPERTA



Locale
Apparato
Motore

Gavione poppa
aggiustato
timone

PIANTA PONTE INFERIORE

DIMENSIONI E CARATTERISTICHE PRINCIPALI

lunghezza fuori tutto: 33,70 metri circa;
 lunghezza al galleggiamento: 29,00 metri circa;
 larghezza massima: 7,92 metri circa;
 altezza di costruzione: ... metri circa;
 immersione: 2,50 metri circa;
 dislocamento: 240 / 260 tonnellate circa;
 bordo libero: 1,60 metri circa;
 velocità di crociera: 10 nodi circa;
 velocità massima: 12 nodi circa;
 autonomia a 10 nodi: 4.750 miglia circa;
 capacità casse combustibile: 61.000 litri circa;
 capacità casse acqua dolce: 7.500 litri circa;
 motori 2 X 485 HP CATERPILLAR 3406E
 Ente di Classifica: RINA spa - Genova
 classe: Croce di Malta 100-A-1.1"Y"-PNNV;
 materiale scafo: acciaio saldato;
 sovrastrutture: lega leggera saldata.

	TIPO L.G. Classic 33,7mt - Profilo e scafo De Vries	MOD/FIB ...	
	ANO Piano Generale Pianta Ponti (Preliminare)	DATA Agosto 2002	CANTIERE T/2018.C
	Scala: 1:75 Data: Agosto 2002		

BURGESS

WORLD CLASS. WORLD WIDE.

London +44 20 7766 4300	Monaco +377 97 97 81 21	New York +1 212 223 0410	Miami +1 305 672 0150	Singapore +65 9665 8990	Beverly Hills +1 310 424 5112	Palma +34 971 495 413	Athens +30 210 967 1661
	Dubai +971 4 425 5874	Phuket +66 7623 9739	Hong Kong +852 6496 2094	Tokyo +81 46 738 8612	Sydney +61 499 945 557	Mumbai +91 98211 67253	

La publicité de ce(s) navire(s) dans des publications imprimées, sur Internet ou sur tout autre support n'est pas autorisée sans l'autorisation écrite préalable de Burgess.
Toutes les informations sont données de bonne foi et sont considérées comme exactes, mais elles ne peuvent être garanties.

Dernière mise à jour : 04 avril 2024