

ELEMENT



ELEMENT

APERÇU.

The sleek 42.7m (140.1ft) ELEMENT is in excellent condition having been extensively maintained, refitted and refurbished to keep her pristine throughout. Decorated in warm, neutral tones, she offers a zen-like space to relax whether you're in the sky lounge, saloon or master suite.

ELEMENT has all the deck space you need to make the most of your time onboard. Uppermost is the sun deck with a large jacuzzi, sunpads and a dining area that can be shaded; perfect to take advantage of the warm sunshine long into the evenings - or removed to dine beneath the stars. The upper deck has a vast social seating area that sweeps around the aft deck, and on the main deck, there is an al fresco dining area around the large cockpit dining table while the side decks lead forwards to a secluded forward sunpad.

Designed to host 12 guests in four luxurious double cabins and two twin cabins, her versatile accommodation makes her perfect for you and a party of family and friends to enjoy. There is a sumptuous full-beam VIP suite on the lower deck. On the main deck, the elegant full-beam master suite benefits from his and hers bathrooms a dressing room and a private office and lounge.

ELEMENT's sky lounge offers you the ideal spot to relax inside. With a wet bar area, sofa seating and TV/AV facilities, it's the place you'll feel cool and relaxed. The main deck saloon gives you an elegant area to gather, ready for chef to delight you with a gourmet menu.

ELEMENT has a 10m Intrepid fast tender ready to whisk you and your party to local harbours, villages, bays or beaches at a moment's notice. When not exploring ashore, your party can have RYA instruction to use the yacht's jetskis and waverunners, while others will enjoy the inflatable tow toys.

She has a top speed of 24 knots with a cruising speed of 14 knots and benefits from zero speed stabilisers. This allows you to travel from bay to bay quickly and comfortably, offering you the opportunity to make the most of her cruising ground and your time on board.

Principales caractéristiques

Recently refitted

A crew with local expertise

Jacuzzi on the sun deck

Zero speed stabilisers to reduce any rolling motion while at anchor

ELEMENT

Aerial view



Cruising



Sun deck



Sun deck



ELEMENT

Bridge deck aft



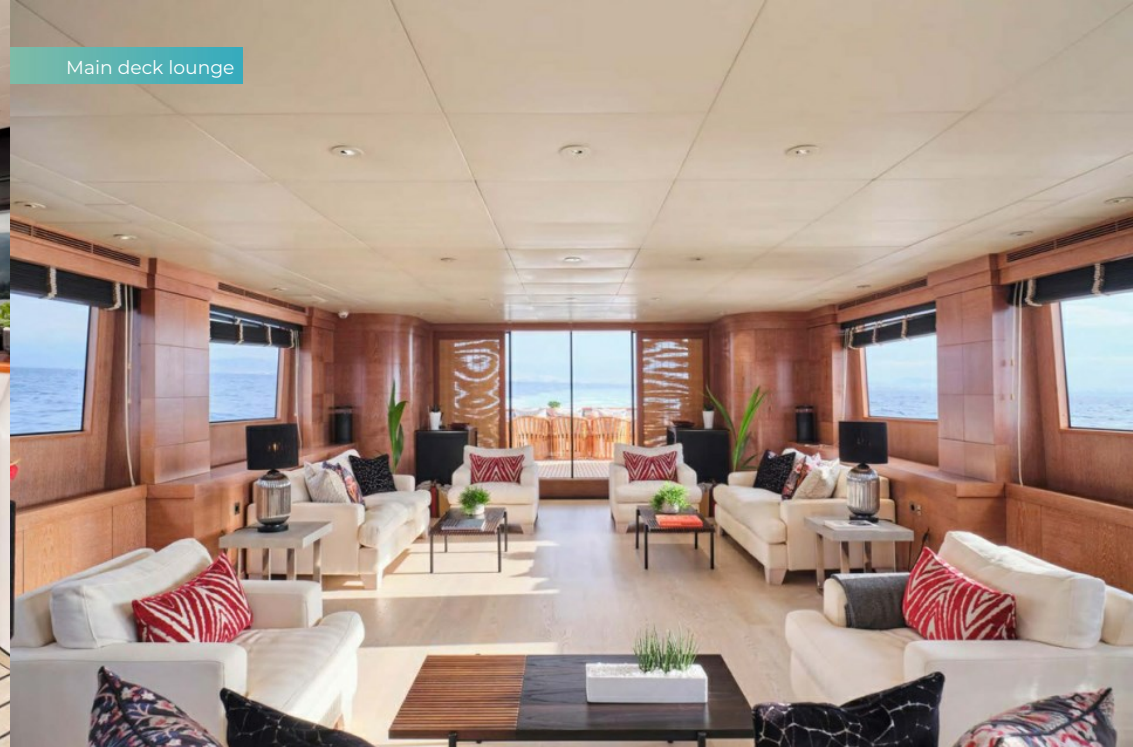
Foredeck



Main deck aft



Main deck lounge



ELEMENT

Bridge deck lounge



Main deck master cabin



Master cabin office

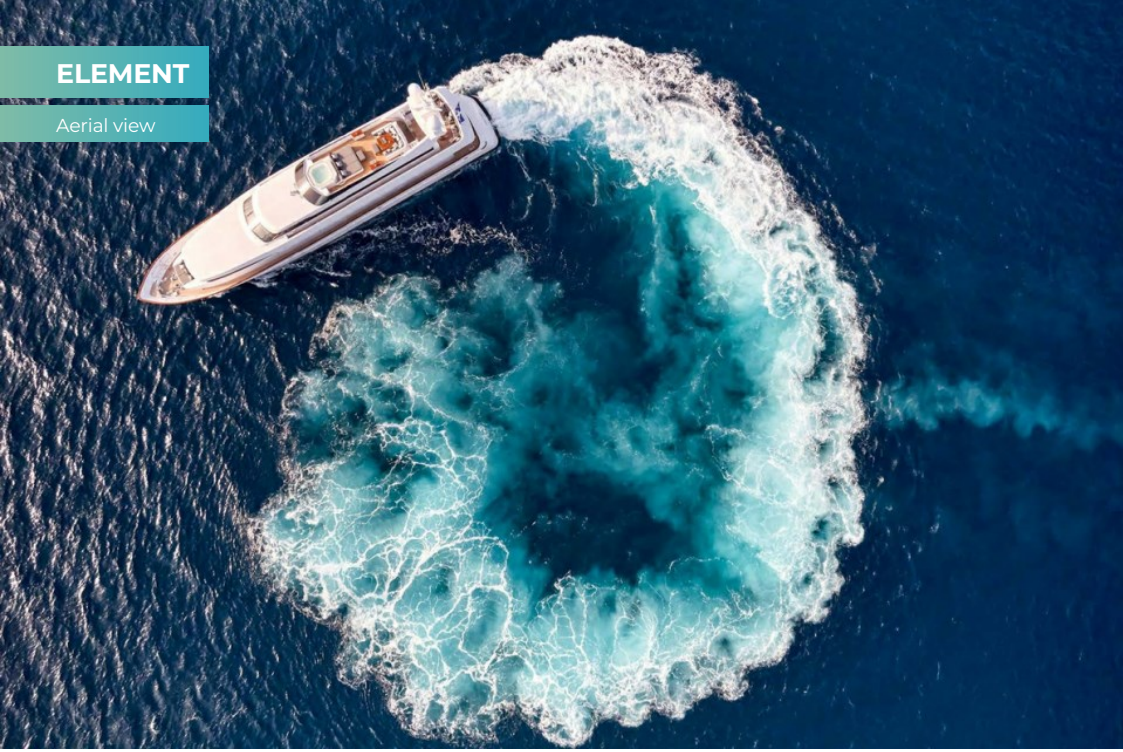


Lower deck twin cabin



ELEMENT

Aerial view



BURGESS

Discover the difference.
burgessyachts.com



ELEMENT

SPECIFICATIONS.



Longueur
42,7m



Chantier
2002 (refitted 2022), Cantieri di Pisa, Italy



Designer d'intérieur
Frederic Mechiche



Largeur
8,3m



Tirant d'eau
2,1m



Tonnage brut
363



Vitesse de croisière
18 knots



Vitesse maximale
22 knots



Consommation de carburant en vitesse de croisière
750 litres par heure



Moteurs
2 x 3 700hp MTU



Invités
12



Nb de cabines invités
6 (4 x double, 2 x twin)



Équipage
9

Note

Fully licensed for charters in Greek waters.

[Voir le yacht sur le site](#)

[Regarder la vidéo du yacht](#)



ELEMENT

ANNEXES & JEUX NAUTIQUES



1 x Tender



1 x Deck jacuzzi



2 x Waverunners



1 x SeaBob



1 x Underwater scooter



2 x Stand up paddleboards



Wakeboard



Waterskis



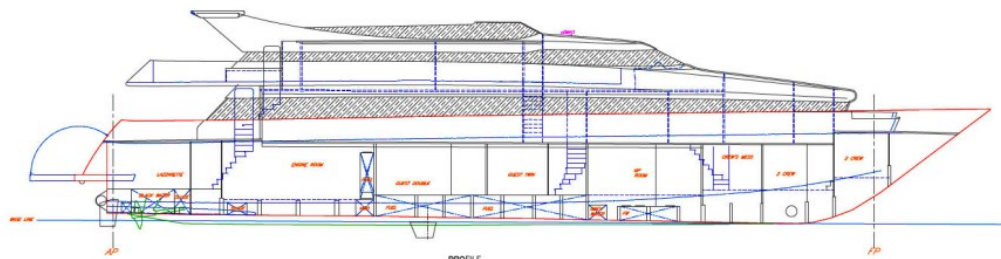
Inflatable tows



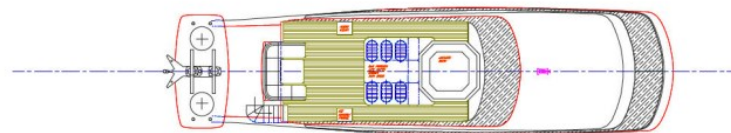
Fishing gear



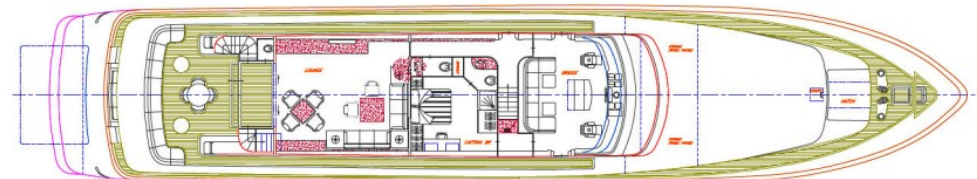
Snorkelling gear



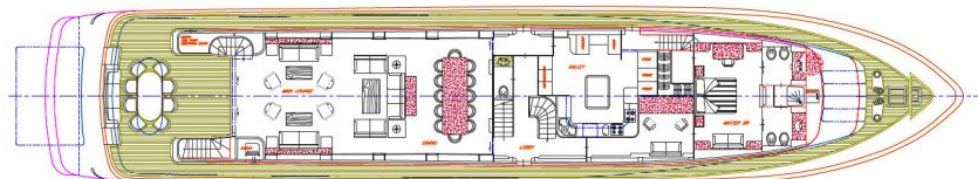
PROFILE



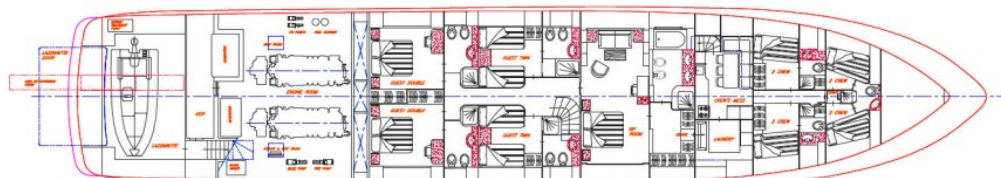
PLAN ON SUN DECK



PLAN ON BRIDGE DECK



PLAN ON MAIN DECK



PLAN ON LOWER DECK

BURGESS

WORLD CLASS.
WORLD WIDE.

London +44 20 7766 4300	Monaco +377 97 97 81 21	New York +1 212 223 0410	Miami +1 305 672 0150	Singapore +65 9665 8990	Beverly Hills +1 310 424 5112	Palma +34 971 495 413	Athens +30 210 967 1661
Dubai +971 4 425 5874	Phuket +66 7623 9739	Hong Kong +852 6496 2094	Tokyo +81 46 738 8612	Sydney +61 499 945 557	Mumbai +91 98211 67253	Shanghai +86 187 0898 6800	Rio de Janeiro +55 21 2553-3238

La publicité de ce(s) navire(s) dans des publications imprimées, sur Internet ou sur tout autre support n'est pas autorisée sans l'autorisation écrite préalable de Burgess.
Toutes les informations sont données de bonne foi et sont considérées comme exactes, mais elles ne peuvent être garanties.

Dernière mise à jour : 10 décembre 2024