

EDESIA



EDESIA

SPÉCIFICATIONS.



Prix demandé
EUR 10 500 000



Chantier
2014 (refitted 2022), Benetti, Italy



Longueur
36,9m



Largeur
8,2m



Tirant d'eau
2,3m



Tonnage brut
298



Vitesse de croisière
12 knots



Vitesse maximale
15 knots



Autonomie
3 400 nm



Pavillon
Marshall Islands



Position
West Mediterranean



Classe
RINA, LY2 Compliant and Unrestricted Service



Designer extérieur
Stefano Righini



Designer d'intérieur
Zuretti



Construction
Hull - GRP, Superstructure - GRP, Deck - Teak



Équipage
7



Invités
12



Cabines
5 (1 × double, 4 × double/twin, 2 × additional berths)



Moteurs
2 × 1 450hp MTU



Propulsion
Twin screw diesel yacht

[Voir le yacht sur le site](#)

[Regarder la vidéo du yacht](#)



EDESIA

Main deck dining area



Lower deck VIP cabin



Main deck aft seating area



BURGESS

Discover the difference.
burgessyachts.com



EDESIA

APERÇU.

EDESIA, delivered in 2014, is a striking example of the latest Benetti Classic 121' series, designed by Stefano Righini. EDESIA is 36.9m in length and this hugely successful design benefits from larger windows than on previous models, as the glass itself has become part of the structure. Maintained in first class condition by her original owner, EDESIA presents as an exciting purchase opportunity. She is MCA compliant and her customised layout makes her appealing for either private or charter use. EDESIA has a range of approximately 3,400nm at 11 knots, and she is powered by twin MTU's of 1,450HP each, enabling a top speed of 15 knots.

Guest accommodation is for up to 12 guests in five en suite cabins. The owner's accommodation spans the full beam of the boat on the main deck, positioned forward, and boasts a private study area, his-and-hers walk-in dressing rooms, and an impressive sweep of windows providing maximum outdoor visibility. On the lower deck there are two double King size VIP cabins aft and two twin cabins (with Pullman beds) foreward which can also be converted to double beds. EDESIA's immaculate interior has a contemporary design and is luxuriously appointed. A largely monochrome palette has been used with accents of colour - all easily adapted to suit the tastes and style of a new owner.

EDESIA's expansive deck spaces give her wide appeal, with their versatility as purposeful entertainment areas or lounging space. Most notable of these is her sun deck, featuring a circular Jacuzzi surrounded by cushioned sun pads. This large deck also has space for individual sun loungers and a dining table. In the tender and toys garage, EDESIA carries a 17' foot Castoldi jet tender and a three-seater Seadoo GTX Jetski.

Principales caractéristiques

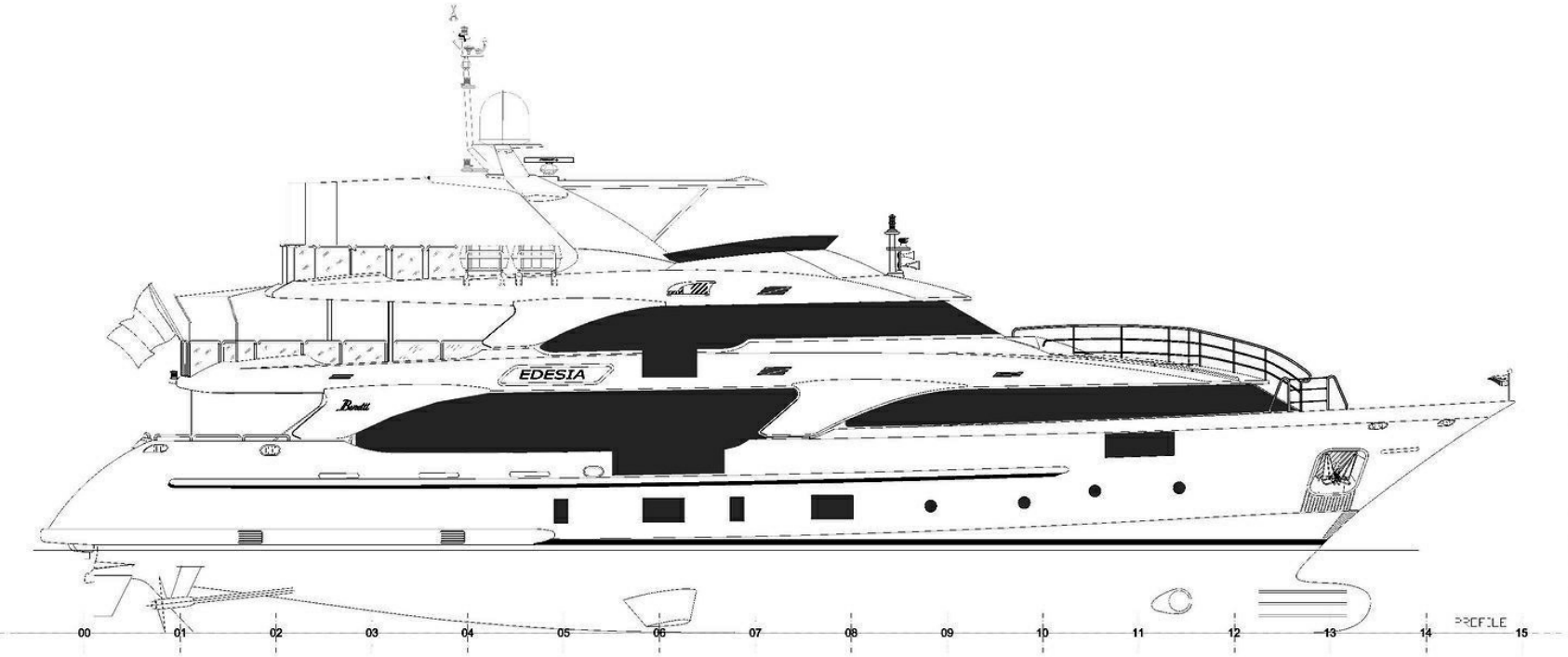
Beautiful exterior lines by Stefano Righini

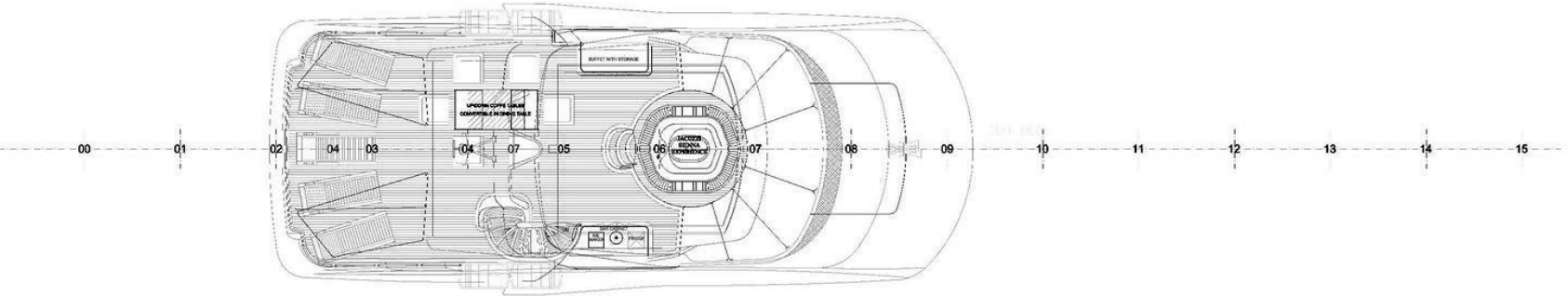
Bright, contemporary interior by Zuretti

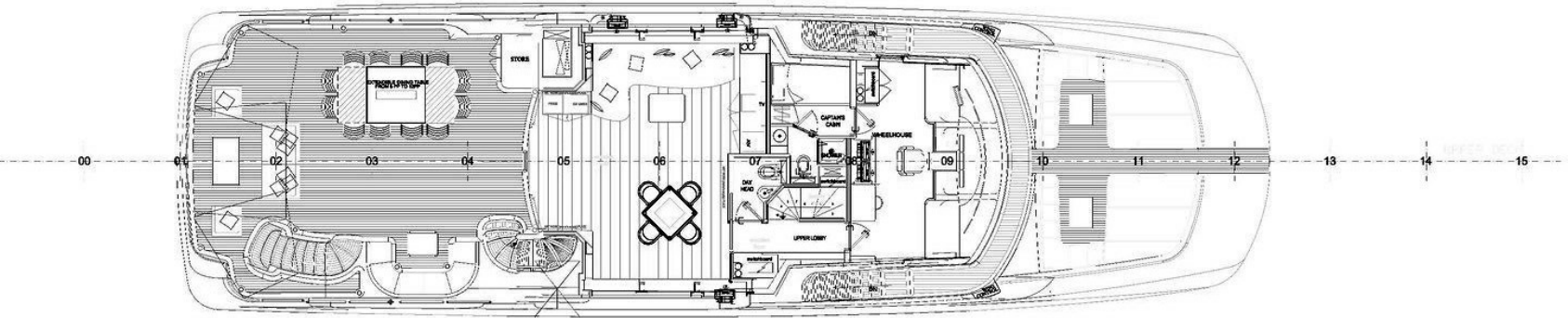
Zero Speed Stabilisers

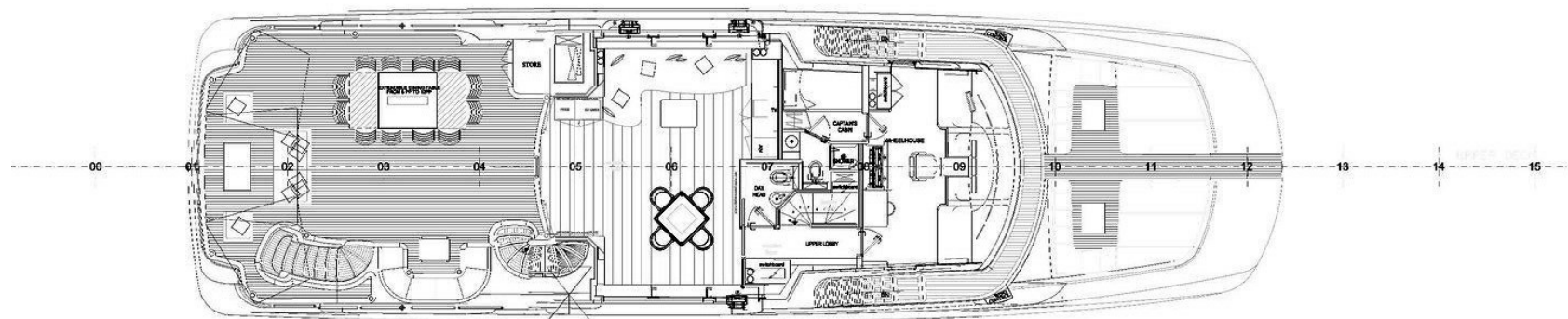
Range of 3,400 nautical of miles at 11 knots

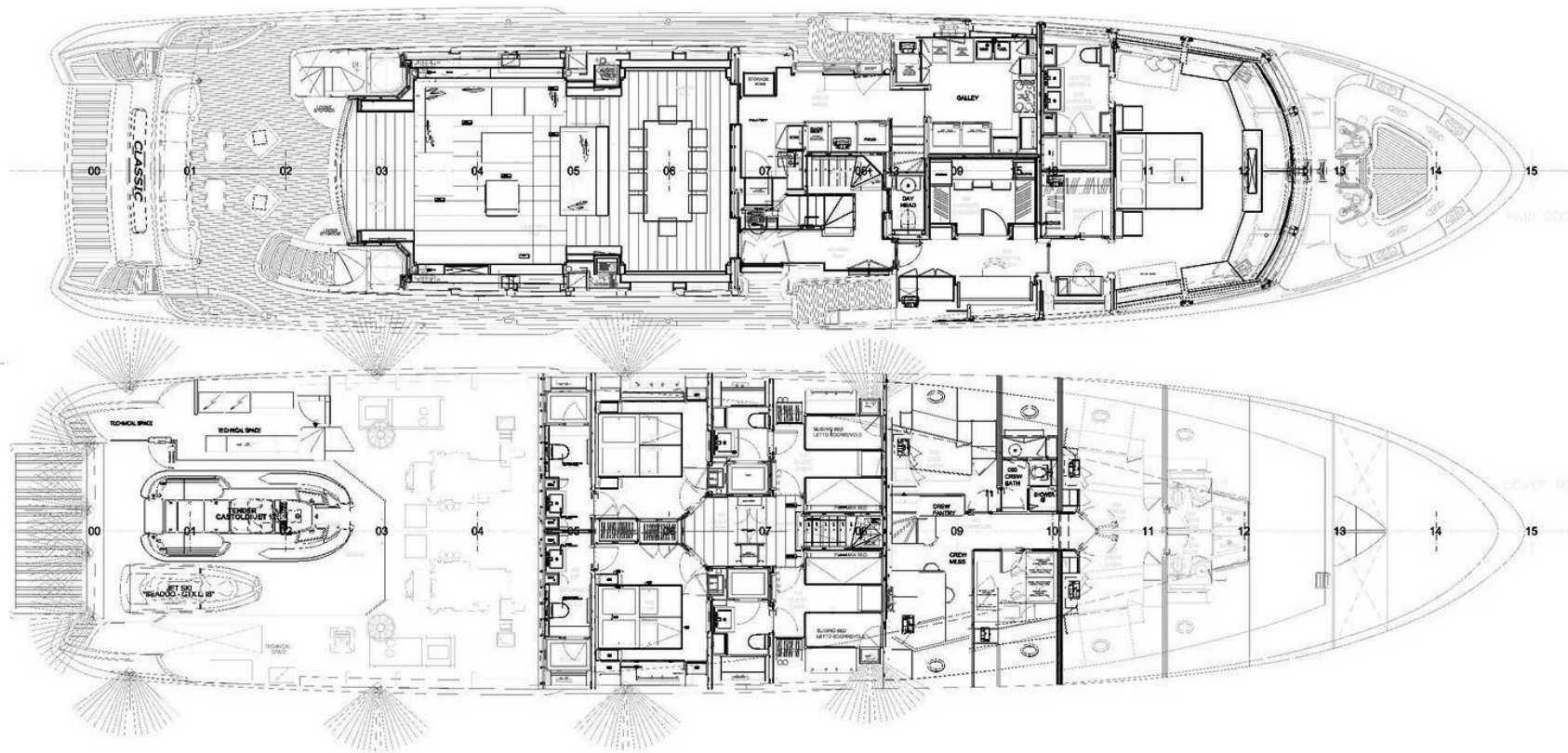
RINA, MCA, LY2 Compliant and Unrestricted Service











BURGESS

WORLD CLASS. WORLD WIDE.

London +44 20 7766 4300	Monaco +377 97 97 81 21	New York +1 212 223 0410	Miami +1 305 672 0150	Singapore +65 9665 8990	Beverly Hills +1 310 424 5112	Palma +34 971 495 413	Athens +30 210 967 1661
	Dubai +971 4 425 5874	Phuket +66 7623 9739	Hong Kong +852 6496 2094	Tokyo +81 46 738 8612	Sydney +61 499 945 557	Mumbai +91 98211 67253	

La publicité de ce(s) navire(s) dans des publications imprimées, sur Internet ou sur tout autre support n'est pas autorisée sans l'autorisation écrite préalable de Burgess.
Toutes les informations sont données de bonne foi et sont considérées comme exactes, mais elles ne peuvent être garanties.

Dernière mise à jour : 01 mars 2024