

# EDESIA

---





# OVERVIEW.

If versatility, luxurious design and impeccable service are high on your charter wish list, then look no further than EDESIA. She offers an impressive choice of spaces whether you want everyone to celebrate together or some time alone with a special someone.

Wake up in a beautiful main deck master suite with spectacular views on three sides, his and hers walk-in dressing rooms and a large pop-up TV. On the lower deck are two spacious VIP cabins and two twin cabins, each with a pullman berth. Dark woods, striking leather wall tiles and chic marble bathrooms give an opulent feel to the guest cabins and the yacht is immaculate after a 2020 refit.

After breakfast in the open-plan main deck lounge, everyone convenes on the nearby sofas to decide the day's plans with the captain. Will it be a fast-paced day of watersports, a quiet bay for a private beach lunch, or visiting a local cultural hotspot ashore? The choice is yours.

EDESIA's tender garage is brimming with watertoys, with her expert crew on hand to guide you, and everyone's favourite has to be the enormous inflatable sun deck slide. After the morning's activities, pop on a shirt and jump in the shallow-draft jet tender to explore the local coves before heading ashore to explore the coastline by foot. A short walk takes you to a secluded beach with the BBQ sizzling and chef in full swing.

Back on board after lunch, head up to the sun deck to relax for a few hours with a dip in the jacuzzi or a snooze on the sunloungers while the captain moves the boat to a new location for the evening's celebrations. Find some shade in the sky lounge and enjoy a movie on the sumptuous chaise longue.

With the anchors set in a new bay, twinkling with lights from a nearby port, and everyone dressed for dinner, head to the foredeck for sundowners. This impressive space is the perfect vantage point from which to watch the sunset. It also provides a great space to soak up the sun on the large sun pads by day, or to give some extra privacy when in port.

Enjoy dinner on the bridge deck aft, with shoreside lights reflecting on the beautifully decorated table. EDESIA's masterful chef excels at modern European cuisine, using fresh local ingredients. After dinner, step into the atmospheric sky lounge to dance the night away and sip cocktails, or take the tender ashore to continue your celebrations in the VIP area of a local hotspot.

## Key features

---

Winner of the Best Charter Yacht 2021 at the ACREW Awards

---

Flexible cabin configurations

---

Exercise equipment

---

Shaded deck dining and deck areas

---

Jacuzzi on the sun deck

---

Zero speed stabilisers to reduce any rolling motion while at anchor

---



EDESIA

Sun deck jacuzzi



Sun deck aft seating area



Upper deck aft seating and dining area



Main deck aft seating area



BURGESS

Discover the difference.  
burgessyachts.com





EDESIA

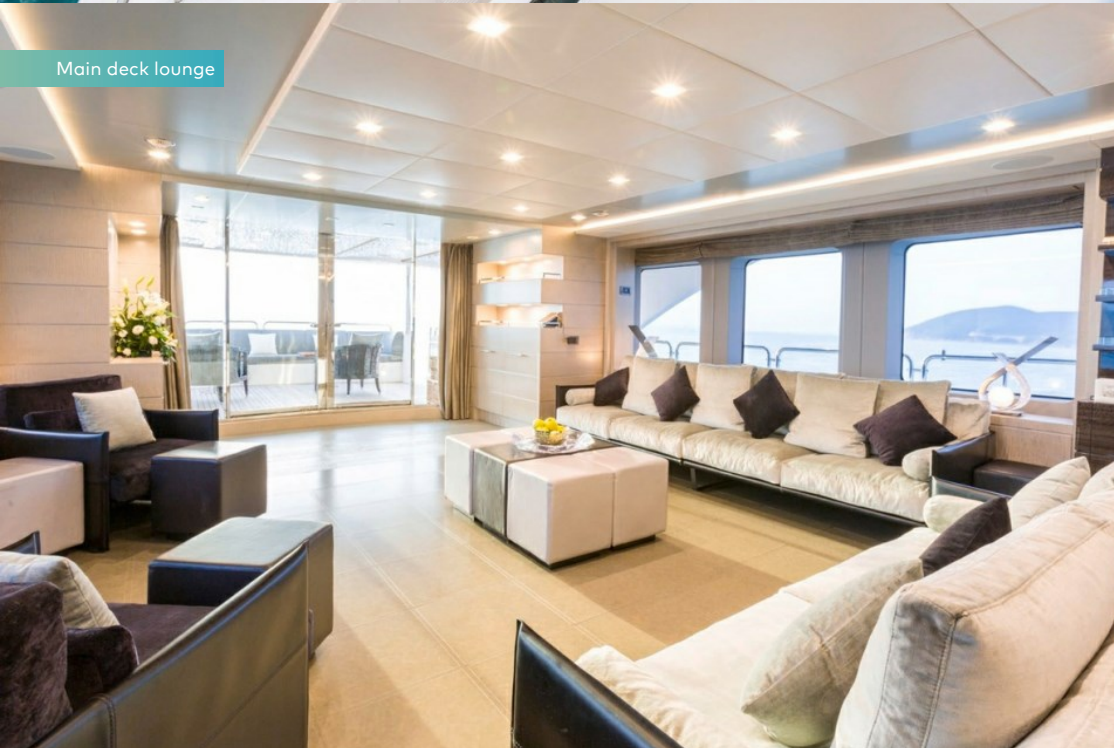
Foredeck



Foredeck sun pads



Main deck lounge



Main deck dining area



BURGESS

Discover the difference.  
burgessyachts.com





EDESIA

Sky lounge



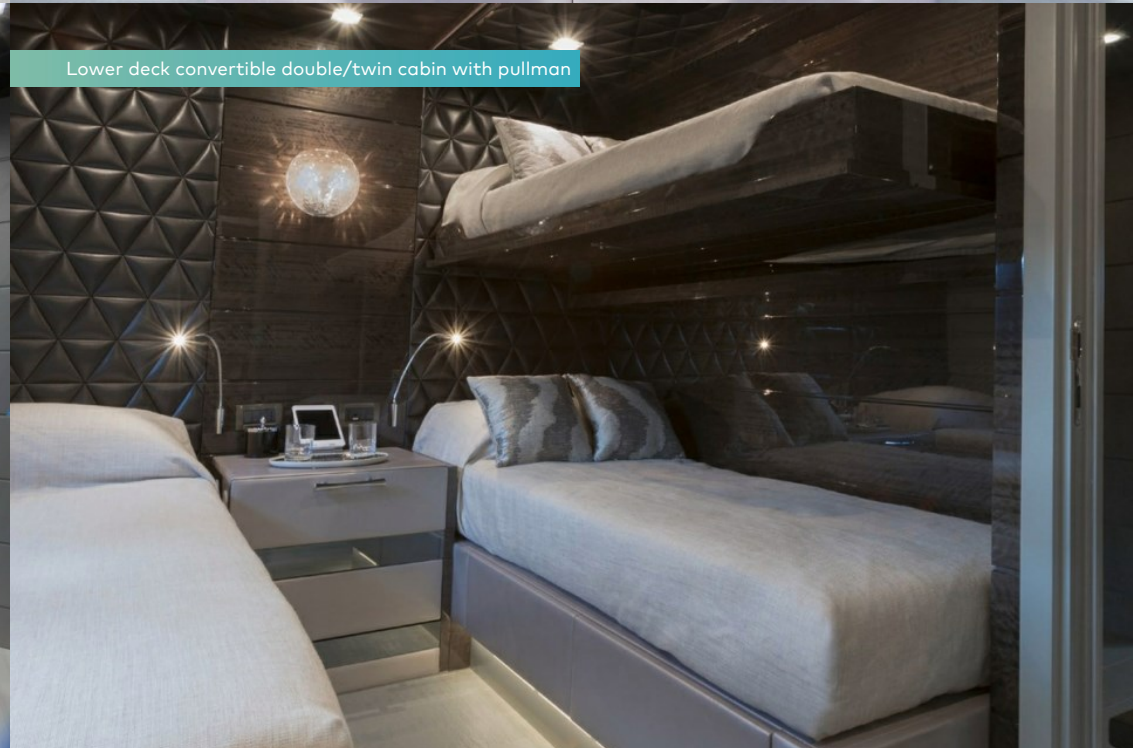
Main deck forward master cabin



Lower deck VIP cabin



Lower deck convertible double/twin cabin with pullman



BURGESS

Discover the difference.  
burgessyachts.com





EDESIA

# SPECIFICATION.



Length  
36.9m (121ft)



Built  
2014 (refitted 2022), Benetti, Italy



Interior designer  
Zuretti



Beam  
8.2m (26.9ft)



Draft  
2.3m (7.5ft)



Gross tonnage  
298



Cruising speed  
12 knots



Maximum speed  
15 knots



Fuel consumption at cruising speed  
250 litres per hour



Engines  
2 x 1,450hp MTU



Guests  
10



No. of guest cabins  
5 (1 x double, 4 x double/twin, 2 x additional berths)



Crew  
7

[View yacht on website](#)

[Watch yacht video](#)



EDESIA

# EQUIPMENT.

## Tenders & toys

---



1 x Tender



1 x Deck jacuzzi



Waterslide



Aquapark



RYA training centre for jetskis  
& waverunners



1 x Waverunner



2 x SeaBobs



2 x Underwater scooters



2 x Stand up paddleboards



Wakeboard



Wakeskate



Waterskis



Inflatable tows



Snorkelling gear

# Fitness & wellness

---



Free weights



Jump ropes



Resistance bands



Training bench



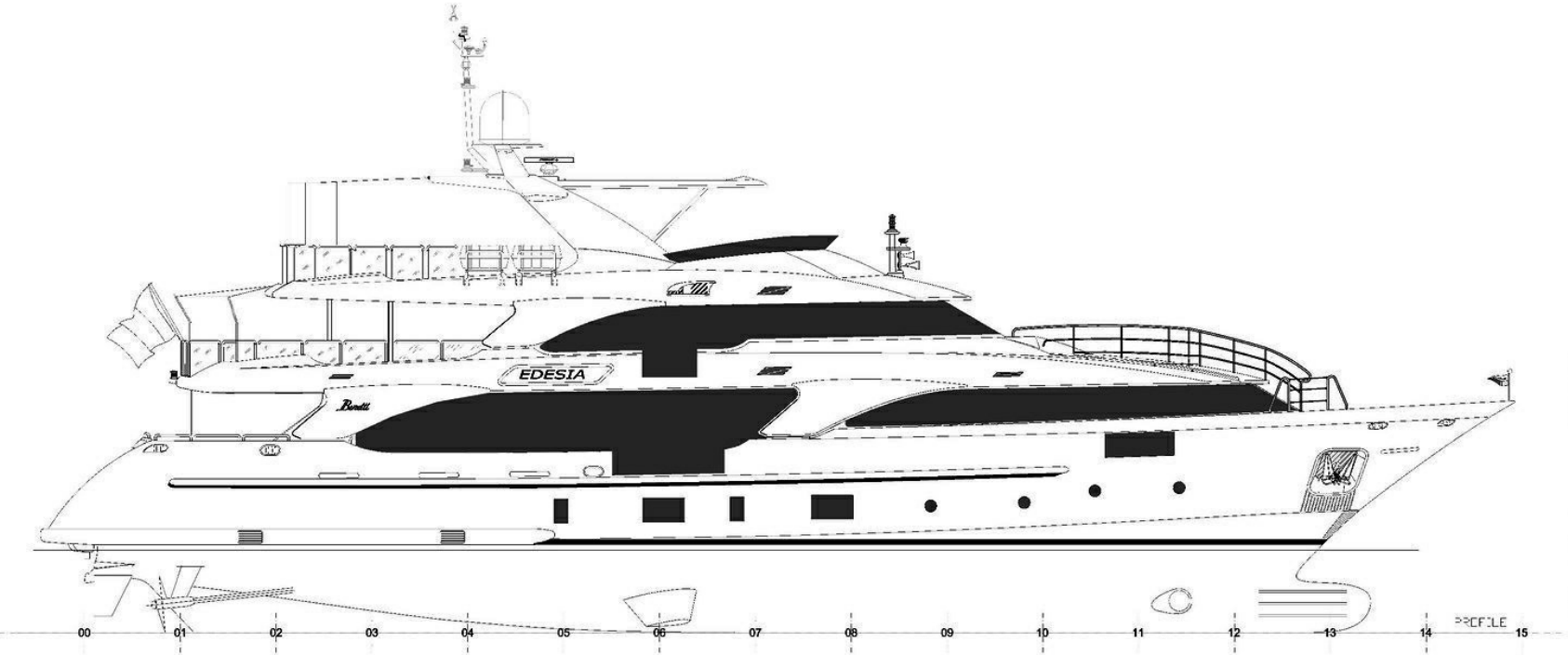
Treadmill

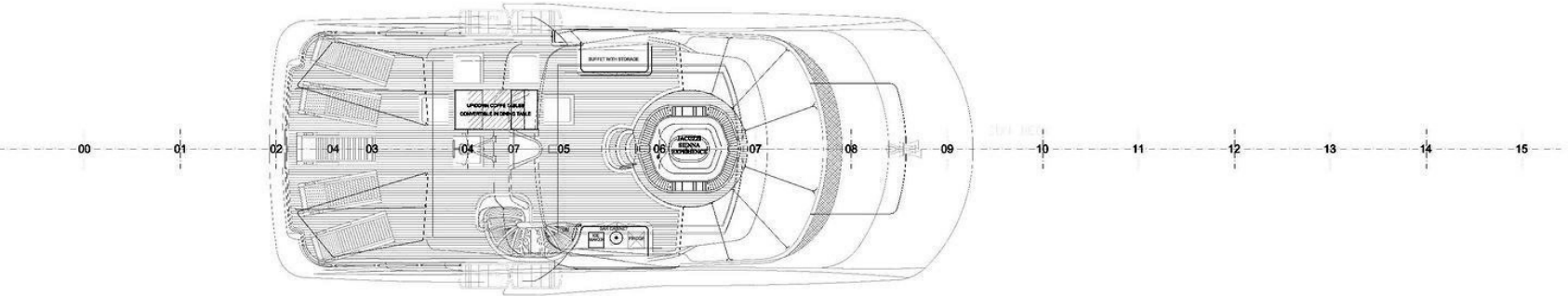


Yoga mats

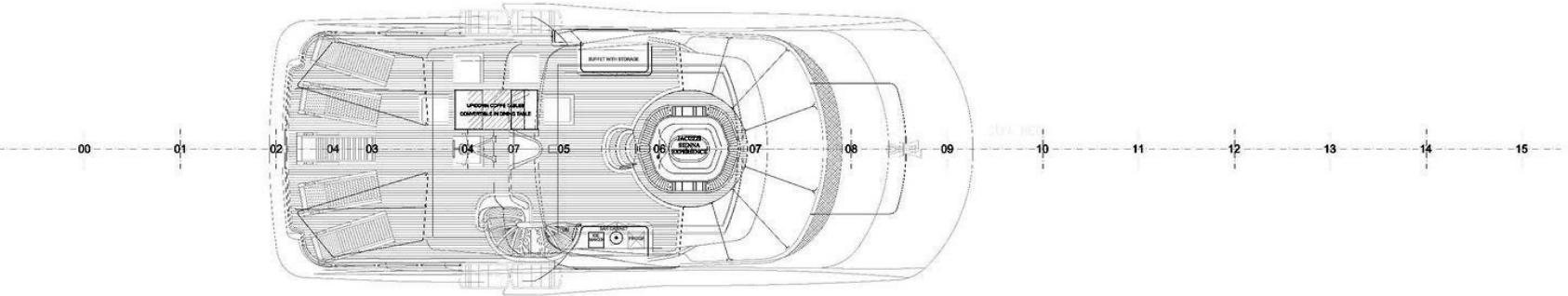


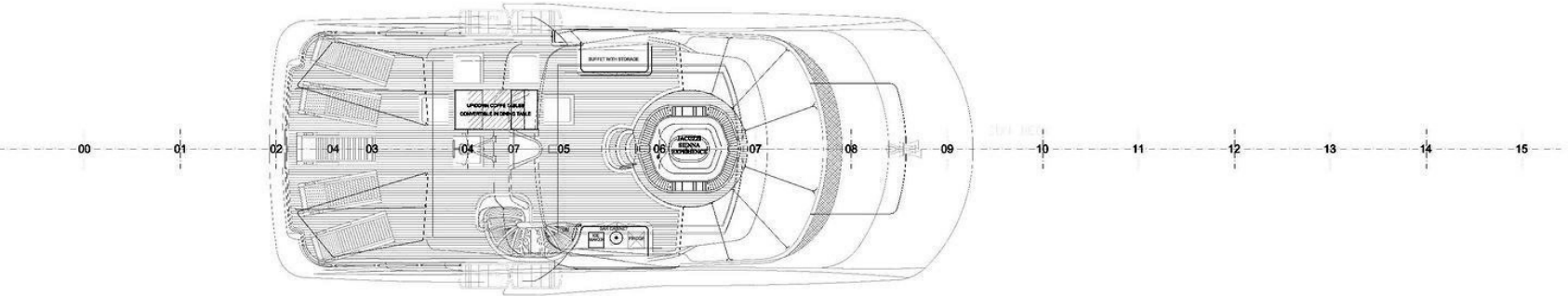




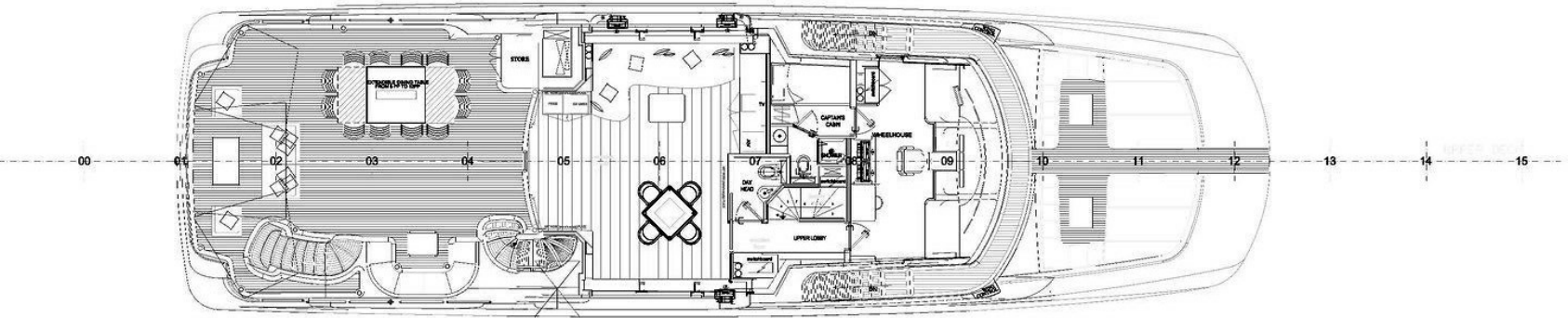


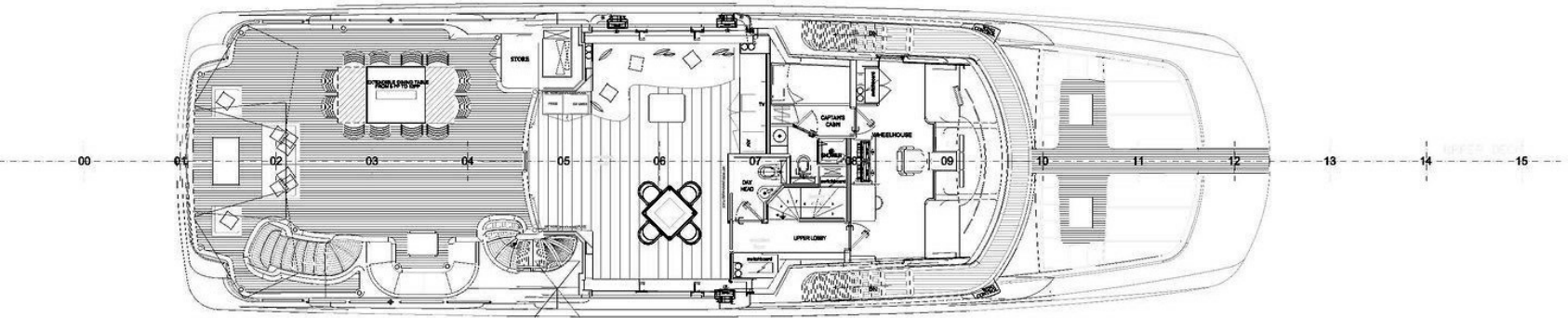




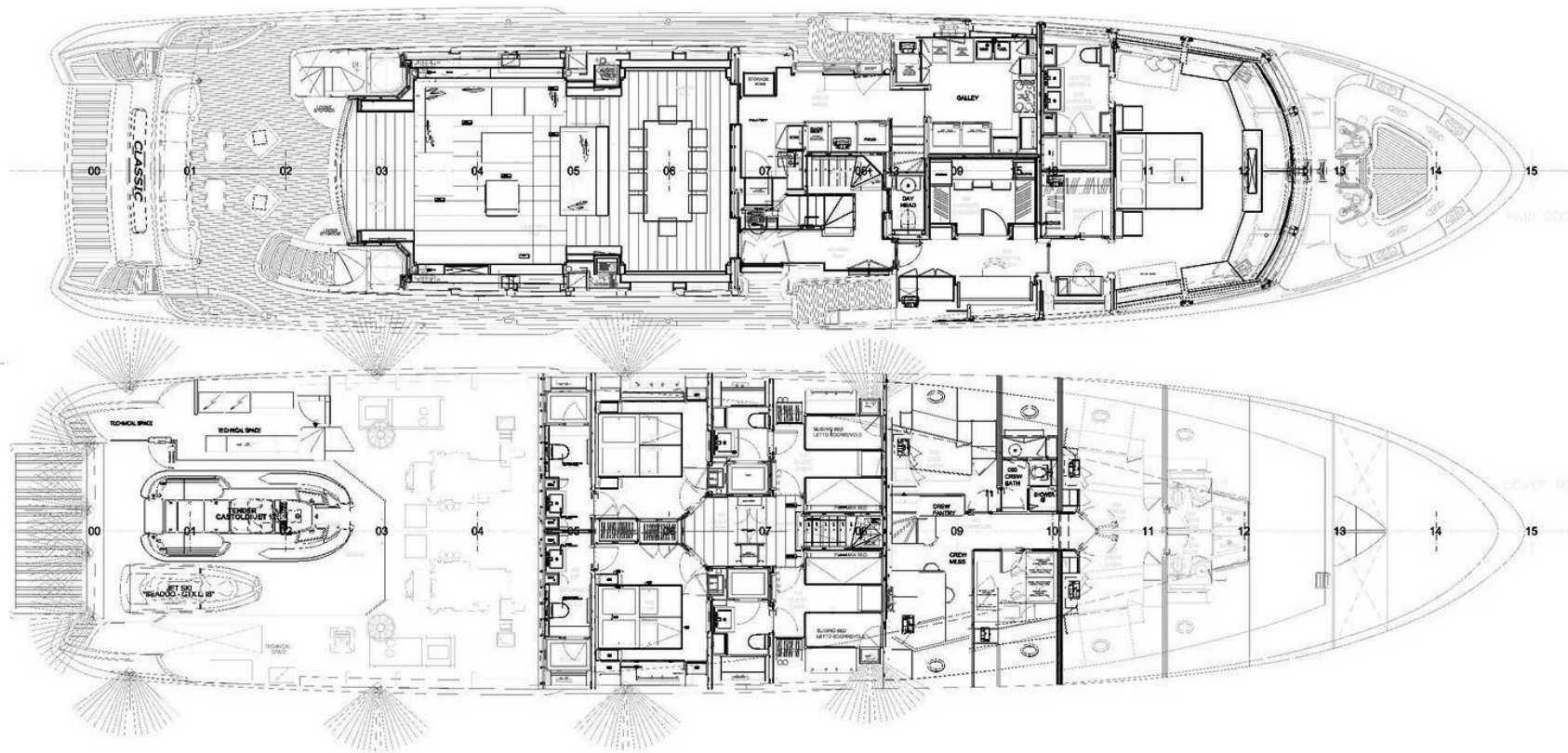












# BURGESS

# WORLD CLASS. WORLD WIDE.

London +44 20 7766 4300	Monaco +377 97 97 81 21	New York +1 212 223 0410	Miami +1 305 672 0150	Singapore +65 9665 8990	Beverly Hills +1 310 424 5112	Palma +34 971 495 413	Athens +30 210 967 1661
	Dubai +971 4 425 5874	Phuket +66 7623 9739	Hong Kong +852 6496 2094	Tokyo +81 46 738 8612	Sydney +61 499 945 557	Mumbai +91 98211 67253	

Advertising of these vessel(s) in printed publications, on the internet or in any other medium is not permitted without prior written permission from Burgess. All particulars are given in good faith and are believed correct but they cannot be guaranteed.

Last updated: 01 March 2024