

DUNIA BARU



DUNIA BARU

OVERVIEW.

DUNIA BARU is a 51m phinisi style yacht that was built with exquisite attention to detail over eight years and launched in early 2014. Constructed with traditional Indonesian methods showcasing the craftsmanship of the local Konjo shipbuilding community, DUNIA BARU merges old and new with all the high-spec amenities you might expect to find on a modern superyacht.

Staying true to her Indonesian name, DUNIA BARU takes private charter guests to a 'New World' saturated in luxury and adventure, whether it's witnessing a lava flow in Alor, surfing Sumbawa's perfect waves or diving among fields of pristine coral in Raja Ampat. Each itinerary is tailored according to guests' every desire, and sailing with DUNIA BARU will give guests the opportunity to swim among some of the most remote and astonishingly diverse reefs in the world, kayak in crater lakes, pitch up for picnics on deserted pink beaches and explore uninhabited islands where ancient Komodo dragons roam against a backdrop of smouldering volcanoes.

Originally built for families, DUNIA BARU makes for incredible adventures for both families and friends, with an expert crew of 18, including a cruise director, a dive instructor and a chef. She is equipped with the highest quality tech and active gear, including a Sonos Integrated sound system, top of the range dive gear, jetskis and more.

Key features

Winner of the Best Asia-Based Charter Yacht at the Asia Boating Award 2017

Low fuel consumption

Accommodate up to 14 guests

A crew with local expertise

DUNIA BARU

Aerial view



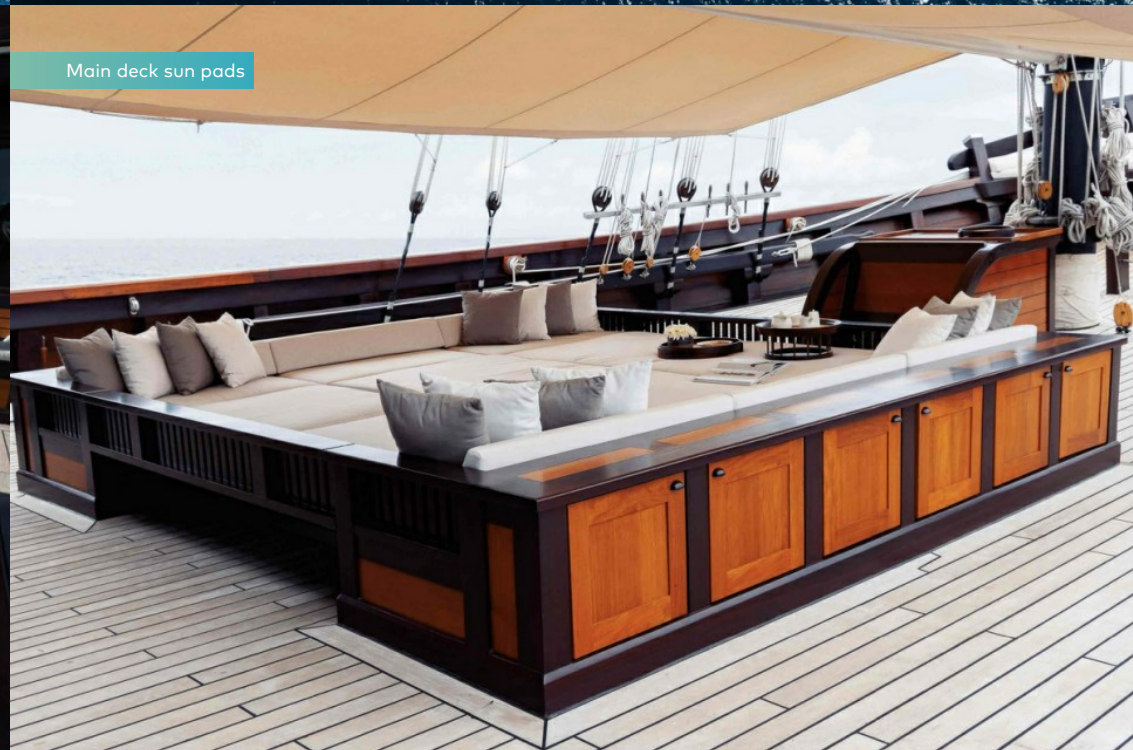
Aerial view



Main deck seating area



Main deck sun pads

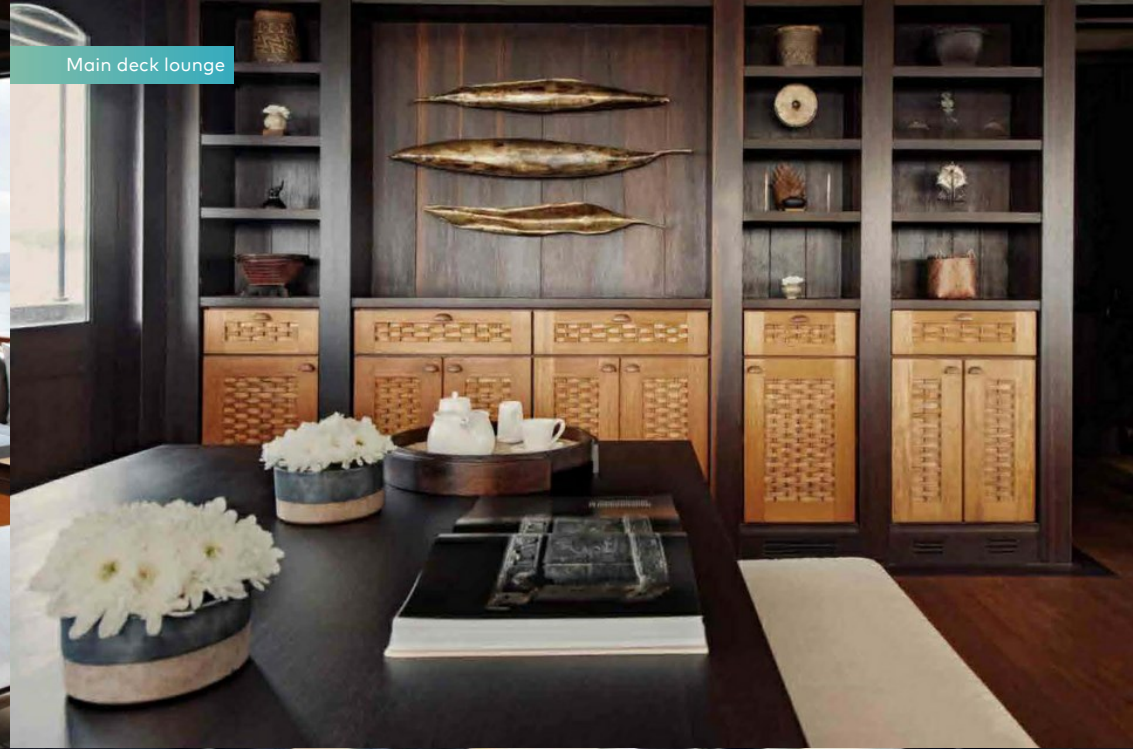


DUNIA BARU

Main deck dining area



Main deck lounge



Main deck lounge



Main deck seating area



DUNIA BARU

Master cabin



Waterslide



Celebrations



At anchor



DUNIA BARU

SPECIFICATION.



Length
51m (167.3ft)



Built
2014 (refitted 2020), Konjo Boatbuilders Ara,
Indonesia



Interior designer
Dual Dimension Design USA



Beam
11m (36.1ft)



Draft min/max
-/4.2m (13.8ft)



Cruising speed
10 knots



Maximum speed
12 knots



Fuel consumption at cruising speed
30 litres per hour



Engines
2 x 829hp Yanmar



Guests
14



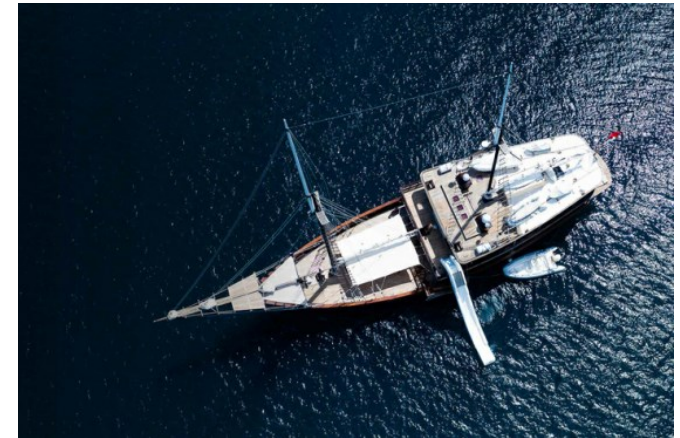
No. of guest cabins
7 (7 x double)



Crew
18

[View yacht on website](#)

[Watch yacht video](#)



EQUIPMENT.

Tenders & toys



2 x Tenders



1 x Sailing dinghy



Waterslide



2 x Waverunners



3 x Kayaks



4 x Stand up paddleboards



Wakeboard



Waterskis



Inflatable tows



Scuba diving equipment



Snorkelling gear

Fitness & wellness



Free weights



Pedal bike

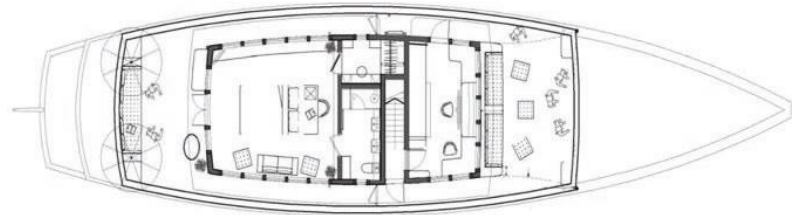


Suspension trainer

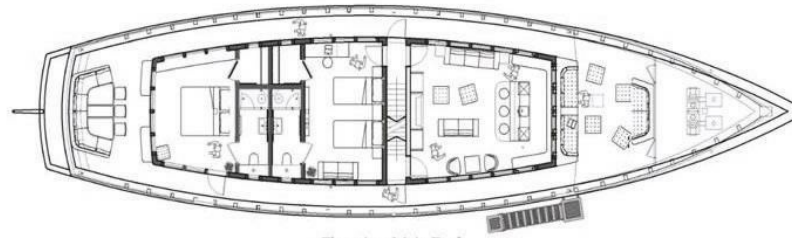


Yoga mats

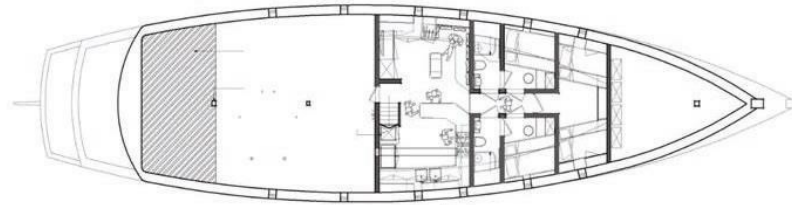




Elevation: Top Deck



Elevation: Main Deck



Elevation: Below Deck

BURGESS

WORLD CLASS.
WORLD WIDE.

London +44 20 7766 4300	Monaco +377 97 97 81 21	New York +1 212 223 0410	Miami +1 305 672 0150	Singapore +65 9665 8990	Beverly Hills +1 310 424 5112	Palma +34 971 495 413	Athens +30 210 967 1661
Dubai +971 4 425 5874	Phuket +66 7623 9739	Hong Kong +852 6496 2094	Tokyo +81 46 738 8612	Sydney +61 499 945 557	Mumbai +91 98211 67253	Shanghai +86 187 0898 6800	

Advertising of these vessel(s) in printed publications, on the internet or in any other medium is not permitted without prior written permission from Burgess. All particulars are given in good faith and are believed correct but they cannot be guaranteed.

Last updated: 01 May 2024