

DUKE TOWN



DUKE TOWN

OVERVIEW.

Key features

Jacuzzi on sun deck

Zero speed stabilisers to reduce any rolling motion while at anchor

DUKE TOWN

Sun deck jacuzzi



Sun deck seating area



Main deck aft



Main deck lounge



DUKE TOWN

Main deck dining area



Sky lounge



Main deck master cabin



Master bathroom en suite



DUKE TOWN

Foyer



Lower deck double cabin



Lower deck twin cabin



Swim platform



DUKE TOWN

SPECIFICATION.



Length
37m (121.4ft)



Built
2002 (refitted 2017), Heesen, The Netherlands



Interior designer
Heesen Yachts



Beam
7.6m (24.9ft)



Draft
2.1m (6.9ft)



Gross tonnage
316



Cruising speed
14 knots



Maximum speed
17 knots



Fuel consumption at cruising speed
350 litres per hour



Engines
1 x 2,270hp MTU



Guests
10



No. of guest cabins
5 (3 x double, 2 x twin)



Crew
8

[View yacht on website](#)



DUKE TOWN

EQUIPMENT.

Tenders & toys

- 

1 x Tender
- 

1 x Deck jacuzzi
- 

RYA training centre for jetskis & waverunners
- 

1 x Waverunner
- 

1 x Stand up jetski
- 

1 x SeaBob
- 

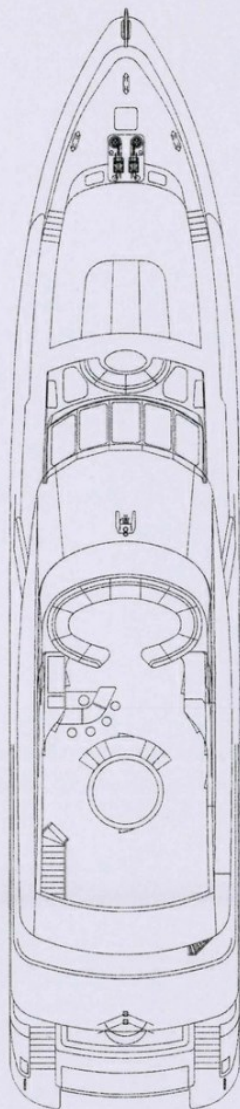
1 x Underwater scooter
- 

Wakeboard
- 

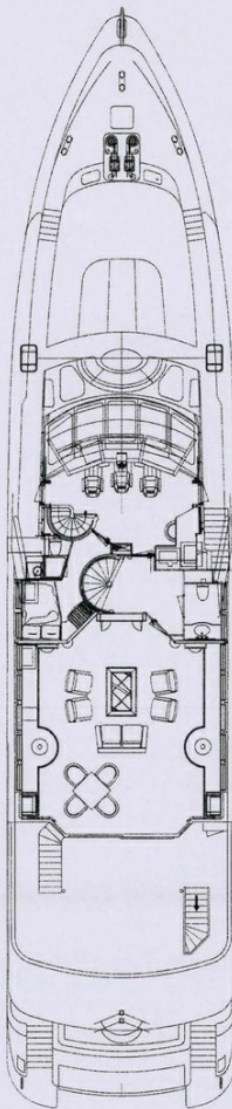
Waterskis
- 

Inflatable toys
- 

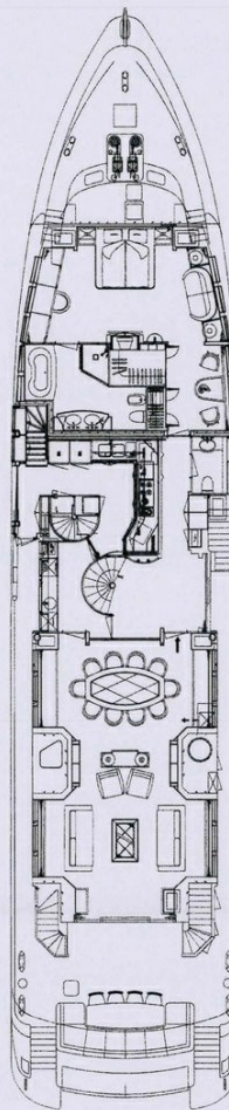
Snorkelling gear



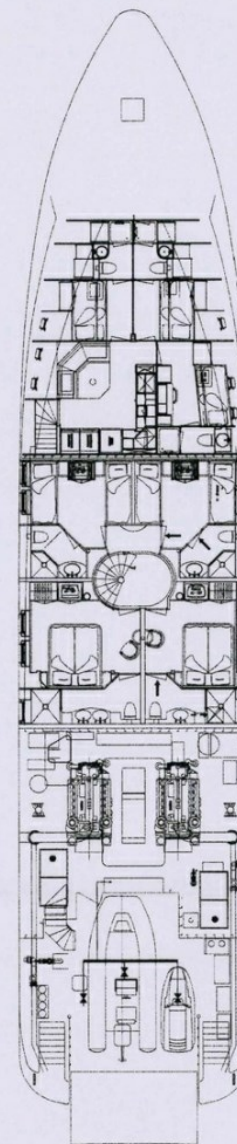
FLY BRIDGE DECK



WHEELHOUSE DECK



MAIN DECK



LOWER DECK

BURGESS

WORLD CLASS. WORLD WIDE.

London +44 20 7766 4300	Monaco +377 97 97 81 21	New York +1 212 223 0410	Miami +1 305 672 0150	Singapore +65 9665 8990	Beverly Hills +1 310 424 5112	Palma +34 971 495 413	Athens +30 210 967 1661
	Dubai +971 4 425 5874	Phuket +66 7623 9739	Hong Kong +852 6496 2094	Tokyo +81 46 738 8612	Sydney +61 499 945 557	Mumbai +91 98211 67253	

Advertising of these vessel(s) in printed publications, on the internet or in any other medium is not permitted without prior written permission from Burgess. All particulars are given in good faith and are believed correct but they cannot be guaranteed.

Last updated: 01 March 2024