

DON CIRO



DON CIRO

APERÇU.

Principales caractéristiques

Flexible cabin configurations

A crew with local expertise

8.5m Bat towed tender

Jacuzzi on fore deck

Zero speed stabilisers to reduce any rolling motion while at anchor

DON CIRO

At anchor



Cruising



Sun deck



Sun deck



DON CIRO

Sun deck



Main deck aft



Main deck aft



Main deck lounge



DON CIRO

Main deck lounge



Main deck dining



Bridge



Main deck master cabin



DON CIRO

Master bathroom en suit



Lower deck double cabin



Lower deck twin cabin



BURGESS

Discover the difference.
burgessyachts.com



DON CIRO

SPECIFICATIONS.



Longueur
33m



Chantier
2002 (refitted 2019), Benetti Sail Division, Italy



Designer d'intérieur
Owner's own design



Largeur
7,4m



Tirant d'eau
2,9m



Tonnage brut
130



Vitesse de croisière
11 knots



Vitesse maximale
14 knots



Consommation de carburant en vitesse de croisière
135 litres par heure



Moteurs
2 x 1 015hp Caterpillar



Invités
10



Nb de cabines invités
**4 (2 x double, 1 x double/twin, 1 x twin,
2 x additional berths)**



Équipage
5

[Voir le yacht sur le site](#)



DON CIRO

ANNEXES & JEUX NAUTIQUES



1 x Tender



1 x Deck jacuzzi



2 x SeaBobs



2 x Subwings



1 x Kayak



2 x Stand up paddleboards



Wakeboard



Waterskis

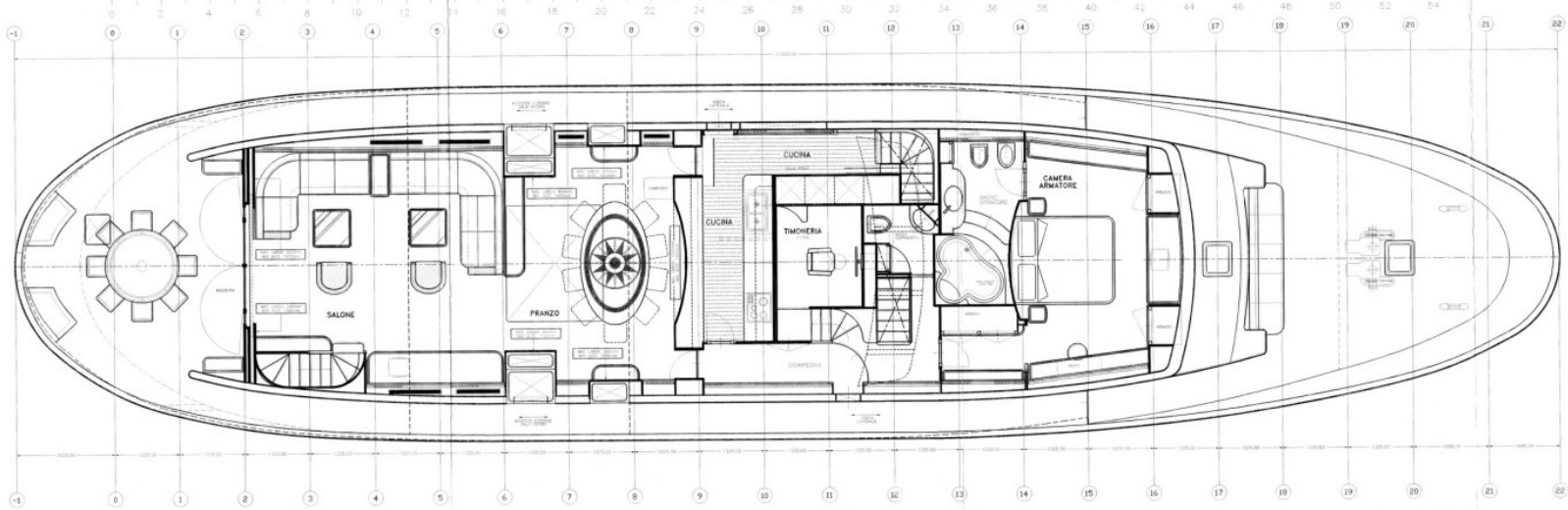


Inflatable platform

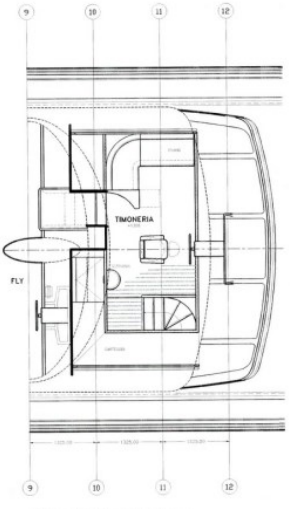


Inflatable toys

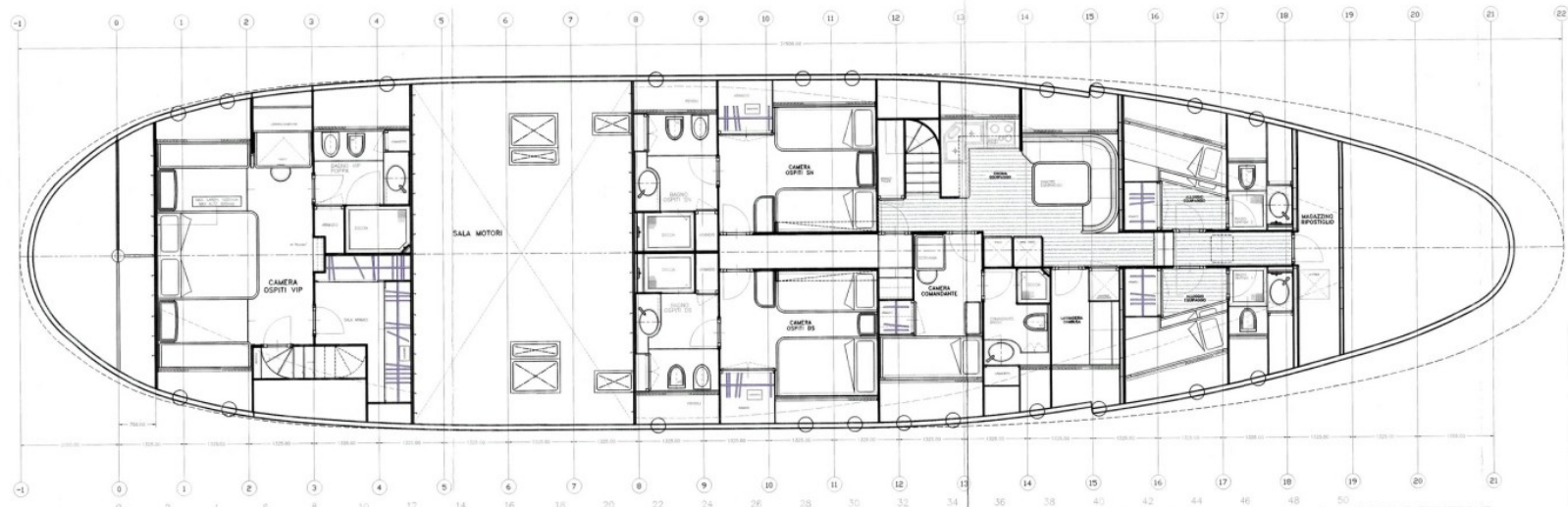
CAMPATA STRUTTURALE 500mm



B PIANO GENERALE
PUNTA COPERTA



B1 PIANO GENERALE
PUNTA TECNICHE



A PIANO GENERALE
PUNTA SOTTOCOPERTA

CAMPATA STRUTTURALE 500mm

LEI NON GARANTISCE IL QUANTO COSTI SIANO FORNITI A TITOLO INFORMATIVO.
LEI NON GARANTISCE IL QUANTO SIANO FORNITI A TITOLO INFORMATIVO.
LEI NON GARANTISCE IL QUANTO SIANO FORNITI A TITOLO INFORMATIVO.

ALL INFORMATION IN THESE PLANS ARE FOR INFORMATION ONLY.
NO WARRANTIES TO BE MADE IN CONNECTION WITH THE PLANS OR THESE DRAWINGS.
PLEASE CONTACT US FOR MORE INFORMATION.

BENETTI SAIL DIVISION

Benetti S.p.A. - Via S. Pietro 1 - 40138 Bologna - Italy - Tel. +39 051 261111

N.	Data	Descrizione
1	7 NOV 2000	RICHIESTE DELL'ARMATORE
2	23 ENF 2000	OTTIMIZZAZIONE DELLE MISURE CON PIANO STRUTTURALE
3	11 AGO 2001	MEETING CON L'ARMATORE
4	11 AGO 2001	COMPLETE MISURE QUORI MODIFICATI BAGNI PRUA EQUIPAGGIO
5	11 SET 2001	MEETING CON L'ARMATORE
6	27 SET 2001	MEETING CON L'ARMATORE

Progetto: **MY 31,5 DS** Tipo: **PIANI GENERALI**
PONTE SOTTO/COPERTA
PONTE COPERTA

Modello: **31,5 DS** Approvato: **AGO 2000** Data: **AGO 2000** Scala: **1:50** Construzione: **001**

Surveyor: **BENETTI RICCARDO** Designer: **PAOLO RICCARDO** File: **13013-001**

BENETTI RICCARDO E PAOLO RICCARDO
 Via S. Pietro 1 - 40138 Bologna - Italy - Tel. +39 051 261111
 Design: **31,5 DS/PG1**



BURGESS

WORLD CLASS. WORLD WIDE.

London +44 20 7766 4300	Monaco +377 97 97 81 21	New York +1 212 223 0410	Miami +1 305 672 0150	Singapore +65 9665 8990	Beverly Hills +1 310 424 5112	Palma +34 971 495 413	Athens +30 210 967 1661
Dubai +971 4 425 5874	Phuket +66 7623 9739	Hong Kong +852 6496 2094	Tokyo +81 46 738 8612	Sydney +61 499 945 557	Mumbai +91 98211 67253	Shanghai +86 187 0898 6800	Rio de Janeiro +55 21 2553-3238
Aspen +1 970 710 2294							

La publicité de ce(s) navire(s) dans des publications imprimées, sur Internet ou sur tout autre support n'est pas autorisée sans l'autorisation écrite préalable de Burgess.
Toutes les informations sont données de bonne foi et sont considérées comme exactes, mais elles ne peuvent être garanties.

Dernière mise à jour : 11 mars 2025