

DESAMIS B



DESAMIS B

APERÇU.

If you'd like the full classic yachting experience with all mod-cons included, look no further than DESAMIS B. This spacious and timeless 40-metre (131ft) beauty from the iconic Benetti shipyard has all the hallmarks of traditional elegance from the graceful flare of her overhanging bow and the solid teak capping rails that accentuate her sheer line to the covered companionways with sculpted, streamlined mullions – a signature Benetti feature for those in the know.

A spacious tri-deck vessel, she offers ample living space inside and out for 10 or 11 guests, with a five-cabin layout. With an enthusiastic and experienced crew of eight on board, attentive service at all times is assured. Despite her classic looks, she is fitted with state-of-the-art stabilisers to smooth her motion when she's anchored and also when she's cruising at sea.

Her finely crafted, traditional interior is an original design by the esteemed yacht designer Terence Disdale with pale fabrics, high-gloss oak panelling and fine marble setting the tone throughout. Her two inside lounges are warm and inviting, elegant and bright. The main deck saloon is a large, sociable living room with a separate dining room forward, and the skylounge above it is a cocktail lounge.

The upper aft deck is a superb outdoor dining area with a 12-seat oval dining table and there's a twin-table lounge plus a sunbathing area on the main deck aft. Up on the sundeck there's a jacuzzi pool, a large expanse of sunpads and a relaxing cocktail lounge.

Up forward on the main deck, the master suite is a beautifully finished full-beam cabin with an abundance of natural light and two separate his-and-hers bathrooms en suite. The other guest cabins, all on the lower deck, include two large doubles and two twins, one of which has an extra pullman bunk.

She carries a wide range of small craft and watersports toys. Her inventory includes a two tenders with waterskis and and inflatable tows, a sailing dinghy, a windsurfer, two SeaBobs, two jet skis, a kayak and snorkelling gear.

Principales caractéristiques

Regularly maintained

Flexible cabin configurations

Exercise equipment

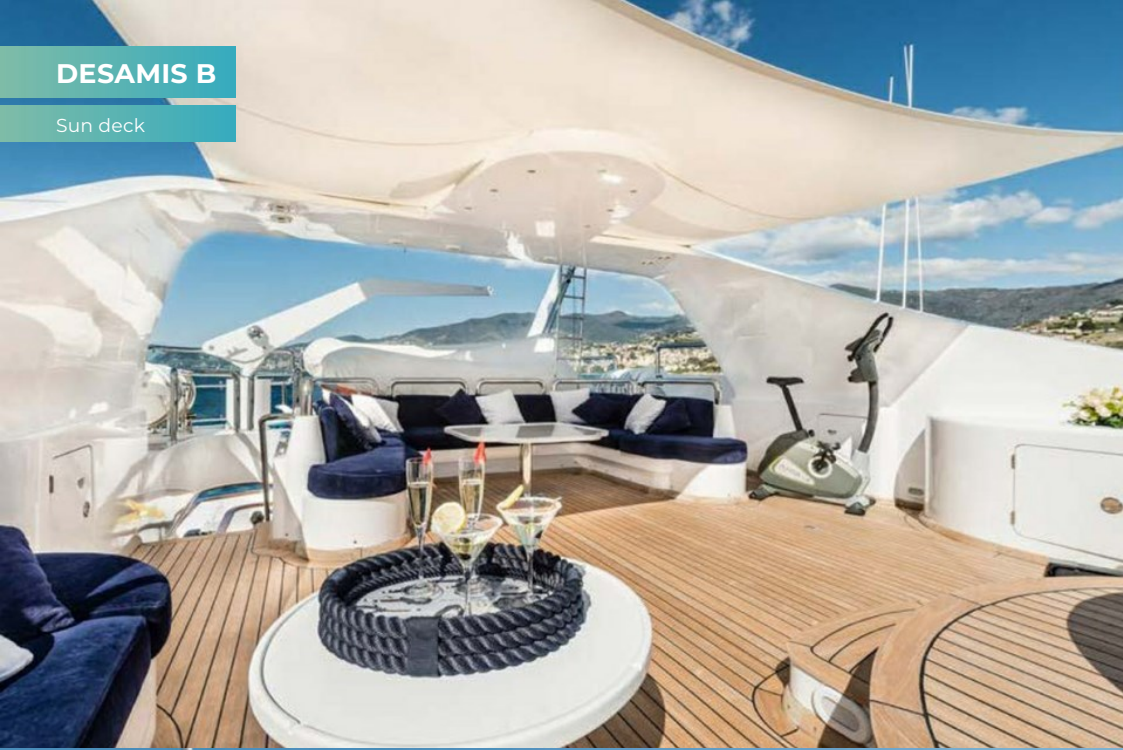
Hydraulic swim platform

Jacuzzi on the upper deck

Zero speed stabilisers to reduce any rolling motion while at anchor

DESAMIS B

Sun deck



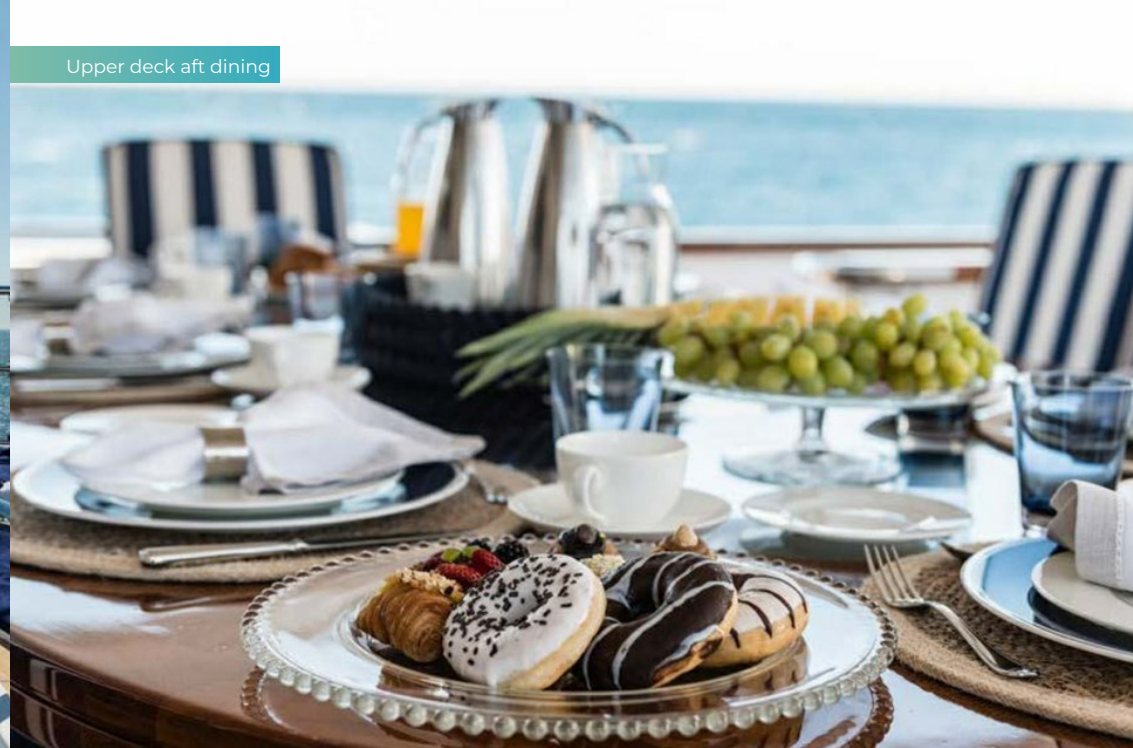
Sun deck



Sun deck jacuzzi



Upper deck aft dining



DESAMIS B

Main deck aft



Main deck lounge



Main dining

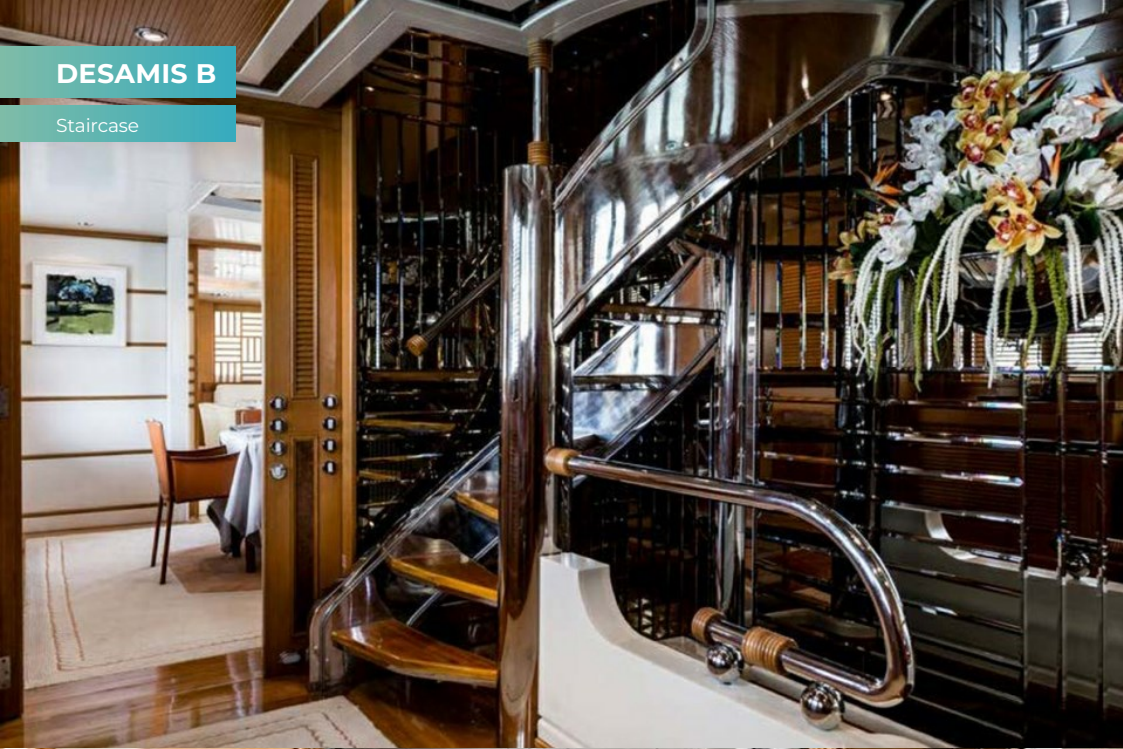


Upper deck lounge



DESAMIS B

Staircase



Main deck master cabin



Master cabin study



Master bathroom en suite



DESAMIS B

Lower deck double cabin



Double bathroom en suit



Twin cabin



Beach club and water toys



DESAMIS B

SPECIFICATIONS.



Longueur
40m



Chantier
1994 (refitted 2014), Benetti, Italy



Designer d'intérieur
Terence Disdale



Largeur
7,9m



Tirant d'eau
2,7m



Tonnage brut
292



Vitesse de croisière
14 knots



Vitesse maximale
16 knots



Consommation de carburant en vitesse de croisière
450 litres par heure



Moteurs
2 x 2 040hp MTU



Invités
11



Nb de cabines invités
5 (3 x double, 2 x twin, 1 x additional berths)



Équipage
8

[Voir le yacht sur le site](#)



ANNEXES & JEUX NAUTIQUES



2 × Tenders



1 × Sailing dinghy



1 × Deck jacuzzi



Anti-jellyfish pool



RYA training centre for jetskis & waverunners



3 × Waverunners



1 × Stand up jetski



2 × SeaBobs



1 × Kayak



2 × Stand up paddleboards



Windsurfer



Waterskis



Inflatable tows



Snorkelling gear

DESAMIS B

REMISE EN FORME & BIEN-ETRE

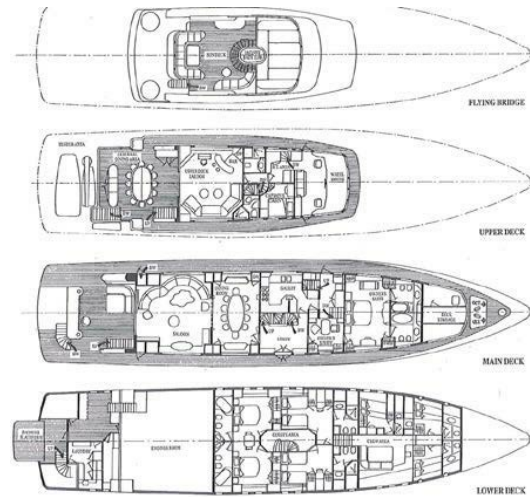


Pedal bike



Treadmill





BURGESS

WORLD CLASS. WORLD WIDE.

| | | | | | | | |
|-----------------------------------|-----------------------------------|------------------------------------|---------------------------------|-----------------------------------|---|--------------------------------------|---|
| London +44 20 7766 4300 | Monaco +377 97 97 81 21 | New York +1 212 223 0410 | Miami +1 305 672 0150 | Singapore +65 9665 8990 | Beverly Hills +1 310 424 5112 | Palma +34 971 495 413 | Athens +30 210 967 1661 |
| Dubai +971 4 425 5874 | Phuket +66 7623 9739 | Hong Kong +852 6496 2094 | Tokyo +81 46 738 8612 | Sydney +61 499 945 557 | Mumbai +91 98211 67253 | Shanghai +86 187 0898 6800 | Rio de Janeiro +55 21 2553-3238 |

La publicité de ce(s) navire(s) dans des publications imprimées, sur Internet ou sur tout autre support n'est pas autorisée sans l'autorisation écrite préalable de Burgess.
Toutes les informations sont données de bonne foi et sont considérées comme exactes, mais elles ne peuvent être garanties.

Dernière mise à jour : 10 décembre 2024