

CUPCAKE



CUPCAKE

OVERVIEW.

A spacious 40-metre tri-deck yacht still fresh from a full interior refit, CUPCAKE is an excellent platform for a relaxing family getaway or a fun-packed holiday with a group of friends. Designed to host 10 or 12 guests on board in five bright and nicely finished cabins, with a great crew of nine at your service, she'll charm you straight away with her timeless classic style.

She offers a compelling range of special features, from the custom casino table in the skylounge and the carefully curated interior details throughout the interior, to her astonishingly large collection of watersports equipment, tenders and toys. She's fitted with powerful stabilisers to smooth her motion whether she's anchored or at sea, so your comfort on board is assured.

The sundeck has a lot of space with a bar and several lounging areas plus a large, elevated day bed with a jacuzzi pool. It's a versatile layout that allows groups of guests to gather together or do their own thing, according to their mood. Her main deck aft is an excellent open-air dining space which includes a sit-up bar, and it's just a few steps down to the bathing platform when you fancy a dip in the sea. When the anchor goes down and the toys are deployed, the boat deck is another big open space with plenty of sun loungers.

The main deck saloon has an elegant vibe and it's beautifully bright with big windows along both sides. There's a cocktail bar in here as well as a sociable lounge and a 10-seat table for fine dining when you choose to spend the evening on board. The skylounge above it has another full bar plus a spacious lounge and a custom blackjack table.

Up front on the main deck level, the master suite is a luxurious private haven. There's a great sea view through big windows on both sides, a sofa to stretch out on and a lavish en suite bathroom with a full size bathtub. One of the lower deck guest cabins also has a king size bed, two others are queen size doubles with sofas. The remaining cabin is a triple with two single beds and a pullman bunk, so it's a versatile layout that can adapt to a range of guests' needs.

Her fantastic collection of tenders and toys is the icing on the cake. It's far too large to list everything here, but highlights include a 12-metre (41ft) powerboat and a beach landing RIB, four jet skis, two SeaBobs, three kayaks, four paddleboards, a sea pool, a water slide, a huge beach setup and a whole lot more.

Key features

Recently refitted in 2022

12m Nimbus towed tender

Jacuzzi on the sun deck

Zero speed stabilisers to reduce any rolling motion while at anchor

CUPCAKE

Aerial view



Sun deck



Sun deck



Bridge deck



CUPCAKE

Main deck aft



Main deck lounge



Main deck lounge



Main deck bar

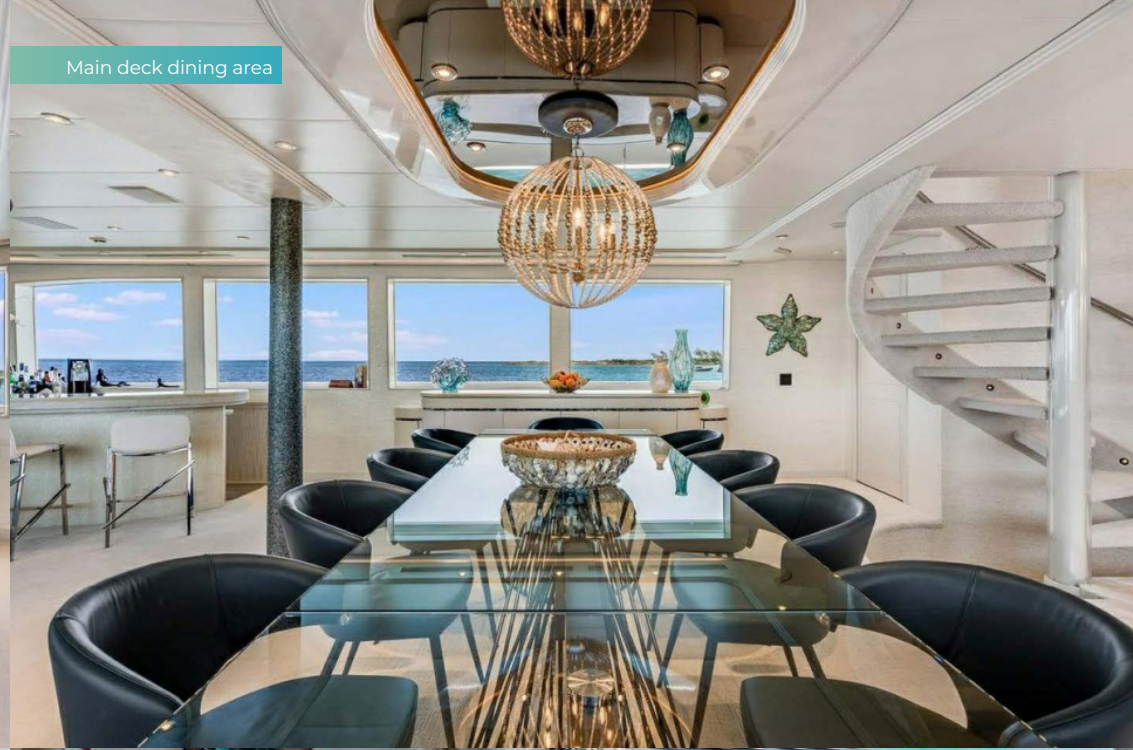


CUPCAKE

Main deck dining area



Main deck dining area



Sky lounge



Sky lounge bar



CUPCAKE

Sky lounge



Backjack table



Lifestyle



Main deck master cabin



CUPCAKE

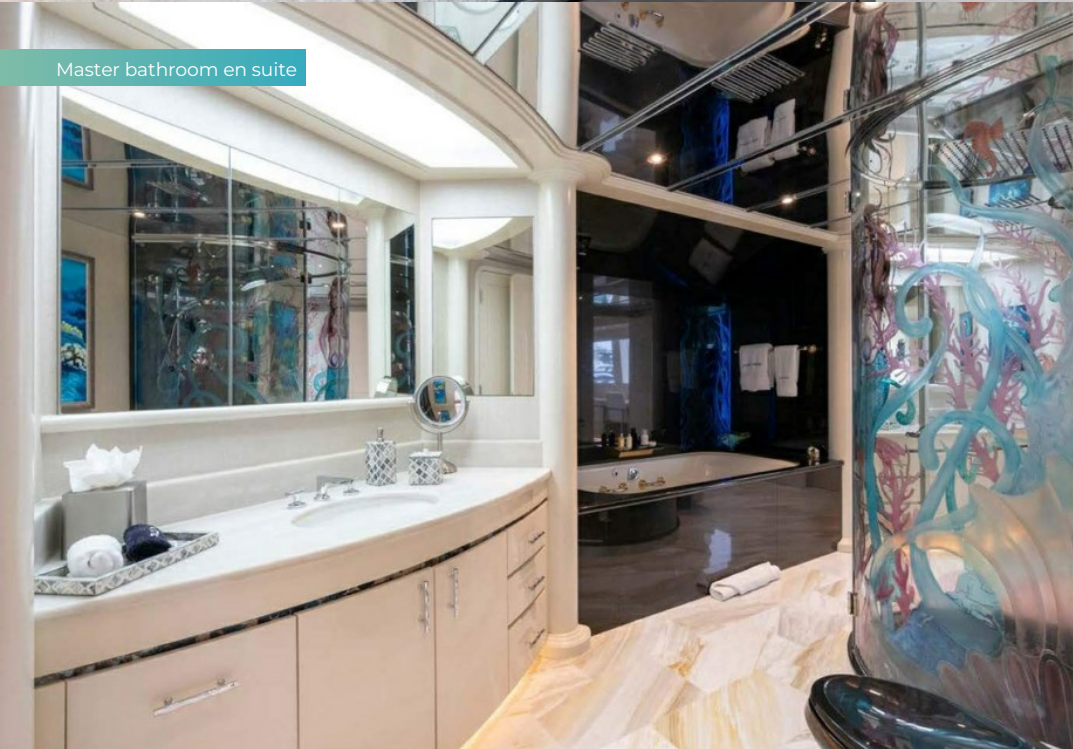
Main deck master cabin



Master lounge



Master bathroom en suite



Lower deck VIP cabin



CUPCAKE

VIP shower room en suite



Lower deck double cabin



Lower deck double cabin



Lower deck twin cabin



CUPCAKE

Guest shower room en suite



At anchor



Waterslide



Stern view



CUPCAKE

Cruising



CUPCAKE

SPECIFICATION.



Length
40.3m (132.2ft)



Built
2000 (refitted 2022), Westship Yachts, United States Of America



Interior designer
Yacht Design Associates



Beam
8.4m (27.6ft)



Draft
2.4m (7.9ft)



Gross tonnage
422



Cruising speed
11 knots



Maximum speed
17 knots



Fuel consumption at cruising speed
231 litres per hour



Engines
2 × 2,250hp MTU



Guests
12



No. of guest cabins
5 (4 × double, 1 × twin, 1 × additional berth)



Crew
8

[View yacht on website](#)

[Watch yacht video](#)



CUPCAKE

TENDERS & TOYS



1 x Towed tender



1 x Tender



1 x Deck jacuzzi



4 x Waverunners



2 x SeaBobs



1 x Underwater scooter



1 x Kayak



7 x Stand up paddleboards



Wakeboard



Waterskis



Anti-jellyfish pool



Waterslide



Inflatable toys



Snorkelling gear



Fishing gear

CUPCAKE

FITNESS & WELLNESS



Free weights

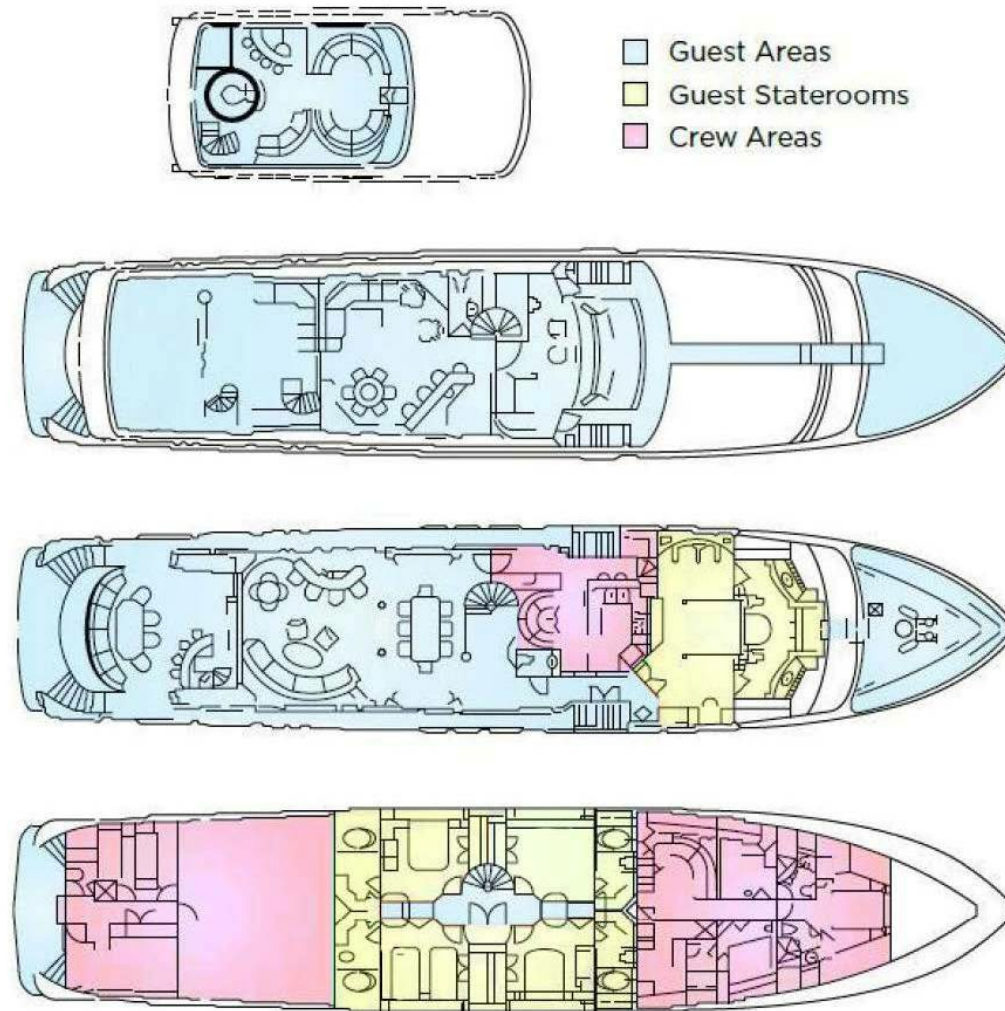


Yoga mats



CUPCAKE

Deck plans



BURGESS

WORLD CLASS. WORLD WIDE.

London +44 20 7766 4300	Monaco +377 97 97 81 21	New York +1 212 223 0410	Miami +1 305 672 0150	Singapore +65 9665 8990	Beverly Hills +1 310 424 5112	Palma +34 971 495 413	Athens +30 210 967 1661
Dubai +971 4 425 5874	Phuket +66 7623 9739	Hong Kong +852 6496 2094	Tokyo +81 46 738 8612	Sydney +61 499 945 557	Mumbai +91 98211 67253	Shanghai +86 187 0898 6800	Rio de Janeiro +55 21 2553-3238
Aspen +1 970 710 2294							

Advertising of these vessel(s) in printed publications, on the internet or in any other medium is not permitted without prior written permission from Burgess. All particulars are given in good faith and are believed correct but they cannot be guaranteed.

Last updated: 13 March 2025