

COMO



COMO

SPÉCIFICATIONS.



Prix demandé
EUR 25 000 000 (Tax paid)



Chantier
2014, Heesen, The Netherlands



Longueur
49,8m



Largeur
9m



Tirant d'eau
2,5m



Tonnage brut
497



Vitesse de croisière
18 knots



Vitesse maximale
23 knots



Autonomie
2 000 nm



Pavillon
Isle of Man



Position
Australasia



Classe
ABS A1 Commercial Yachting Service AMS LY2



Designer extérieur
Omega Architects



Designer d'intérieur
Francesco Paszkowski Design



Construction
Hull - Aluminium, Superstructure - Aluminium,
Deck - Teak



Équipage
9



Invités
12



Cabines
6 (4 × double, 2 × twin)

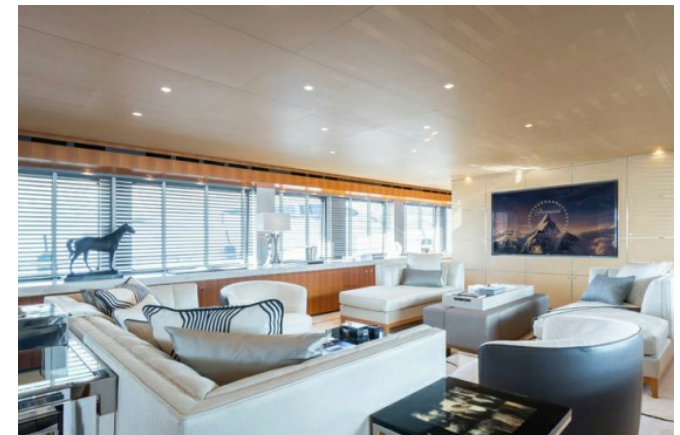


Moteurs
2 × 3 850hp MTU



Propulsion
Twin screw diesel yacht

[Voir le yacht sur le site](#)



COMO



BURGESS

Discover the difference.
burgessyachts.com



COMO



BURGESS

Discover the difference.
burgessyachts.com



COMO



BURGESS

Discover the difference.
burgessyachts.com



COMO



BURGESS

Discover the difference.
burgessyachts.com



COMO



BURGESS

Discover the difference.
burgessyachts.com



COMO



BURGESS

Discover the difference.
burgessyachts.com



COMO



BURGESS

Discover the difference.
burgessyachts.com



COMO



BURGESS

Discover the difference.
burgessyachts.com



COMO

APERÇU.

COMO was delivered in 2014 by Heesen to critical acclaim. Her sleek and streamlined profile coupled with advanced naval architecture ensures enhanced performance fused with head turning aesthetics created by Frank Laupman who masterfully combined the Heesen feel with the owner's criteria.

She features the largest sun deck on a yacht this size. Every aspect of COMO has been meticulously thought out to create a seriously luxurious offering. Perfectly fusing fine Italian craftsmanship with the Heesen stamp of engineering excellence, COMO excels in all departments.

She accommodates up to 12 guests in six spacious cabins, including a master suite, three double guest suites and two twin guest suites.

Her twin 3,850hp MTU engines cruise at 18 knots with a range of 2,000 nautical miles. She has a maximum speed of 23 knots.

Principales caractéristiques

Oversized sunpads surrounded by infinity views

Immensely impressive sun deck

Accommodates up to 12 guests (master suite, 3 double guest suites & 2 twin guest suites)

Maximum speed of 23 kts, cruising speed of 16 kts

EU VAT paid

Annexes

1 x Tender Dariel D7 custom 1 x Rescue
Tender Zodiac MKCS Classic GR Z 09

BURGESS

WORLD CLASS. WORLD WIDE.

London +44 20 7766 4300	Monaco +377 97 97 81 21	New York +1 212 223 0410	Miami +1 305 672 0150	Singapore +65 9665 8990	Beverly Hills +1 310 424 5112	Palma +34 971 495 413	Athens +30 210 967 1661
	Dubai +971 4 425 5874	Phuket +66 7623 9739	Hong Kong +852 6496 2094	Tokyo +81 46 738 8612	Sydney +61 499 945 557	Mumbai +91 98211 67253	

La publicité de ce(s) navire(s) dans des publications imprimées, sur Internet ou sur tout autre support n'est pas autorisée sans l'autorisation écrite préalable de Burgess.
Toutes les informations sont données de bonne foi et sont considérées comme exactes, mais elles ne peuvent être garanties.

Dernière mise à jour : 01 mars 2024