

CLOUD ATLAS



CLOUD ATLAS

APERÇU.

A design classic from the 1990s in beautiful condition, CLOUD ATLAS stands out from the crowd with her crisp exterior lines and bold, striking livery. Fresh and fully updated in a recent refit, this is a unique and distinctive yacht with her own individual sense of style. She's a 46-metre (150ft) tri-deck vessel with ample living space, designed to host up to 12 guests in five cabins with service from a crew of nine.

The sundeck is a charming, uncluttered space. There's a big jacuzzi pool and full-beam sunpads up front, screened and sheltered with a tinted windbreak, and a sociable lounge aft with C-shaped sofas around twin tables and a chic parasol for shade. One level down, on the upper aft deck, there's a large outdoor dining space with a 10-seat table and a separate lounge area aft, in full sun. The main deck aft has another snug and comfortable lounge – this one in deep, cool shade – and a broad expanse of sunpad cushions overlooking the stern. With all of these spaces plus a Portuguese bridge leading down to the breezy foredeck, there is plenty of scope for each of your guests to find the ideal place on board to suit their mood.

Lavishly furnished and impeccably tasteful, her interior is a delight. The snug sky lounge is ideally equipped for proper movie nights on board. The main lounge has a chic, comfortable lounge with design classic sofas and a welcoming, home-from-home feel, plus an elegant formal dining table beneath an impressive chandelier. The master suite is a full-beam cabin with a super king size bed upholstered in lush velours and matching sofas on both sides.

There's an excellent range of watersports equipment on board. She carries three tenders including a big Castoldi RIB to whisk you from ship to shore. When the anchor goes down, the toys come out – SeaBob water scooters and jet skis, wakeboards, water skis, kayaks, paddleboards and a range of inflatable toys. She's well equipped for snorkelling too, with fill kit in a wide range of sizes and there's a floating swimming pool for kids to splash about in safety.

Welcome aboard – and prepare to be charmed.

Principales caractéristiques

Recently refitted

Flexible cabin configurations

Exercise equipment

Jacuzzi on the sun deck

Zero speed stabilisers to reduce any rolling motion while at anchor

CLOUD ATLAS

Cruising



Aerial view



Sun deck



Sun deck



CLOUD ATLAS

Sun deck jacuzzi



Bridge deck aft



Bridge deck aft



Bridge deck aft



CLOUD ATLAS

Main deck lounge



Sky lounge



Sky lounge



Bridge



CLOUD ATLAS

Main deck master cabin



Main deck master cabin



Lower deck double cabin



Lower deck twin cabin



CLOUD ATLAS

Swim platform



CLOUD ATLAS

SPECIFICATIONS.



Longueur
46m



Chantier
1990 (rebuilt 2016, refitted 2021), Lloyds Ships, Australia



Designer d'intérieur
Lloyd's Ships



Largeur
8,5m



Tirant d'eau
2,9m



Tonnage brut
373



Vitesse de croisière
12 knots



Vitesse maximale
17 knots



Consommation de carburant en vitesse de croisière
270 litres par heure



Moteurs
2 x 1 800hp Caterpillar



Invités
12



Nb de cabines invités
5 (3 x double, 2 x twin, 2 x additional berths)



Équipage
9

[Voir le yacht sur le site](#)
[Regarder la vidéo du yacht](#)



ANNEXES & JEUX NAUTIQUES



3 × Tenders



1 × Deck jacuzzi



Anti-jellyfish pool



2 × Waverunners



4 × SeaBobs



1 × Kayak



1 × Stand up paddleboard



Wakeboard



Waterskis



Inflatable tows



Scuba diving equipment



Snorkelling gear

CLOUD ATLAS

REMISE EN FORME & BIEN-ETRE



Multi gym



Treadmill



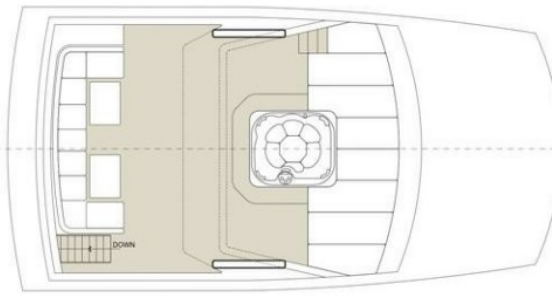
Upright stationary bike



CLOUD ATLAS

CLOUD ATLAS deck plan

SUN DECK



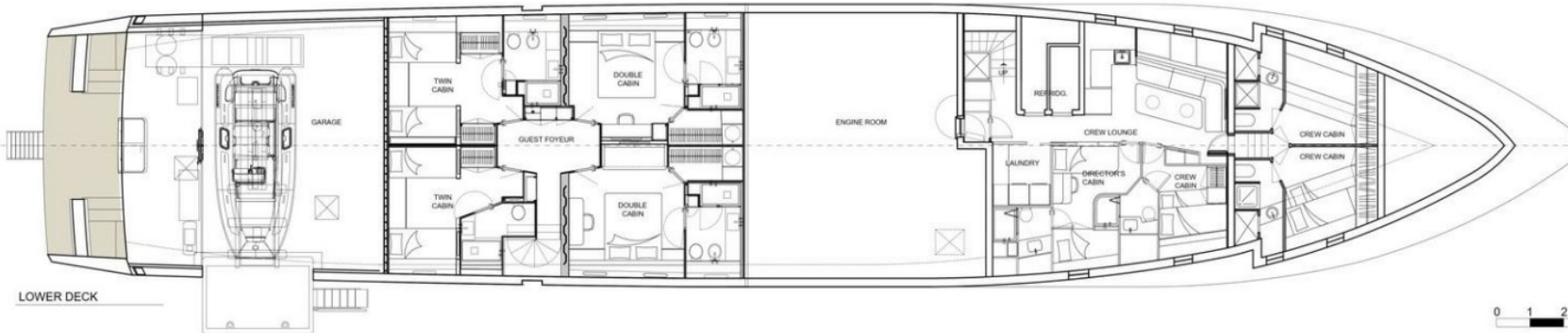
UPPER DECK



MAIN DECK



LOWER DECK



R	-
Q	-
P	-
O	-
N	-
M	-
L	-
I	-
H	-
G	-
F	-
E	-
D	-
C	-
B	-
A	-

CANTIERE NAVALE GARDELLA GINO Srl
 Gardeffa Group srl - Via S. Giovanni 11 - 10121 Genova
 Capale Recco - Area Industriale Recco - 10128 Genova
 Tel. +39 010 51 20 00 - Fax +39 010 51 20 01 - info@gardeffa.it - www.gardeffa.it

BBArchitect - Studio di Architettura Bettelli
 Via G. Garibaldi 11 - 10121 Genova
 info@bbarchitect.it - www.bbarchitect.it

01 REFITTING MOTOR YACHT - CLOUD ATLAS
 GENERAL ARRANGEMENT



BURGESS

WORLD CLASS. WORLD WIDE.

London +44 20 7766 4300	Monaco +377 97 97 81 21	New York +1 212 223 0410	Miami +1 305 672 0150	Singapore +65 9665 8990	Beverly Hills +1 310 424 5112	Palma +34 971 495 413	Athens +30 210 967 1661
Dubai +971 4 425 5874	Phuket +66 7623 9739	Hong Kong +852 6496 2094	Tokyo +81 46 738 8612	Sydney +61 499 945 557	Mumbai +91 98211 67253	Shanghai +86 187 0898 6800	Rio de Janeiro +55 21 2553-3238

La publicité de ce(s) navire(s) dans des publications imprimées, sur Internet ou sur tout autre support n'est pas autorisée sans l'autorisation écrite préalable de Burgess.
Toutes les informations sont données de bonne foi et sont considérées comme exactes, mais elles ne peuvent être garanties.

Dernière mise à jour : 10 décembre 2024