

CHRISTINA TOO



CHRISTINA TOO

OVERVIEW.

Fast, stable and luxurious, CHRISTINA TOO is one of the most advanced edition of the Sunreef Supreme 68 power Catamaran, built in 2017.

Offering 300 m2 of living space, CHRISTINA TOO can accommodate up to eight guests offering one master and one VIP suites with generous quartz-clad bathrooms and two guest cabins. Her vast main deck featuring a full beam galley and saloon was given a bright custom décor combining grey and cream tones with contrasting colorful furniture.

Key features

Low fuel consumption

Jacuzzi on the main deck

Shallow draft for shallow water cruising

CHRISTINA TOO

Flybridge



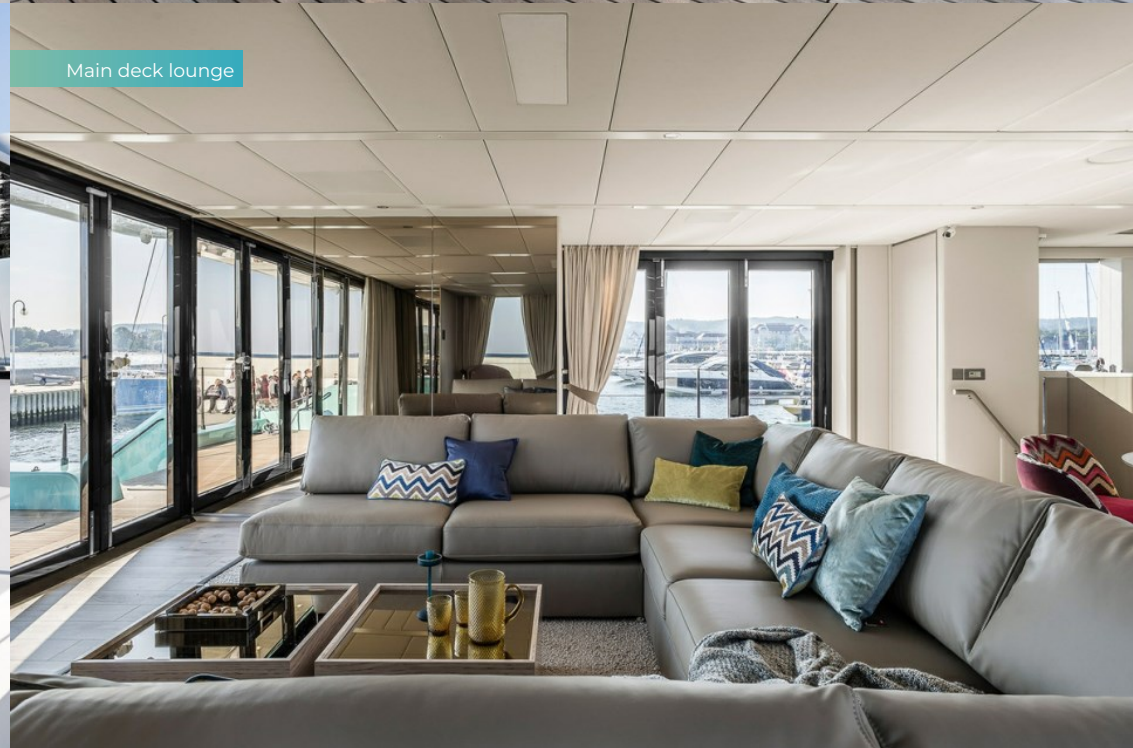
Sun deck aft sun pads



Sun pads



Main deck lounge



BURGESS

Discover the difference.
burgessyachts.com



CHRISTINA TOO

Main deck dining area



Double cabin



Double cabin



Double cabin



BURGESS

Discover the difference.
burgessyachts.com



CHRISTINA TOO

SPECIFICATION.



Length
20.7m (67.9ft)



Built
2017, Sunreef Yachts



Beam
10.5m (34.4ft)



Draft
1.4m (4.6ft)



Cruising speed
10 knots



Maximum speed
12 knots



Fuel consumption at cruising speed
80 litres per hour



Guests
8



No. of guest cabins
4 (4 x double)



Crew
4

[View yacht on website](#)



CHRISTINA TOO

TENDERS & TOYS



1 × Tender



1 × Deck jacuzzi



2 × SeaBobs



1 × Kayak



2 × Stand up paddleboards



Wakeboard



Kneeboard



Waterskis



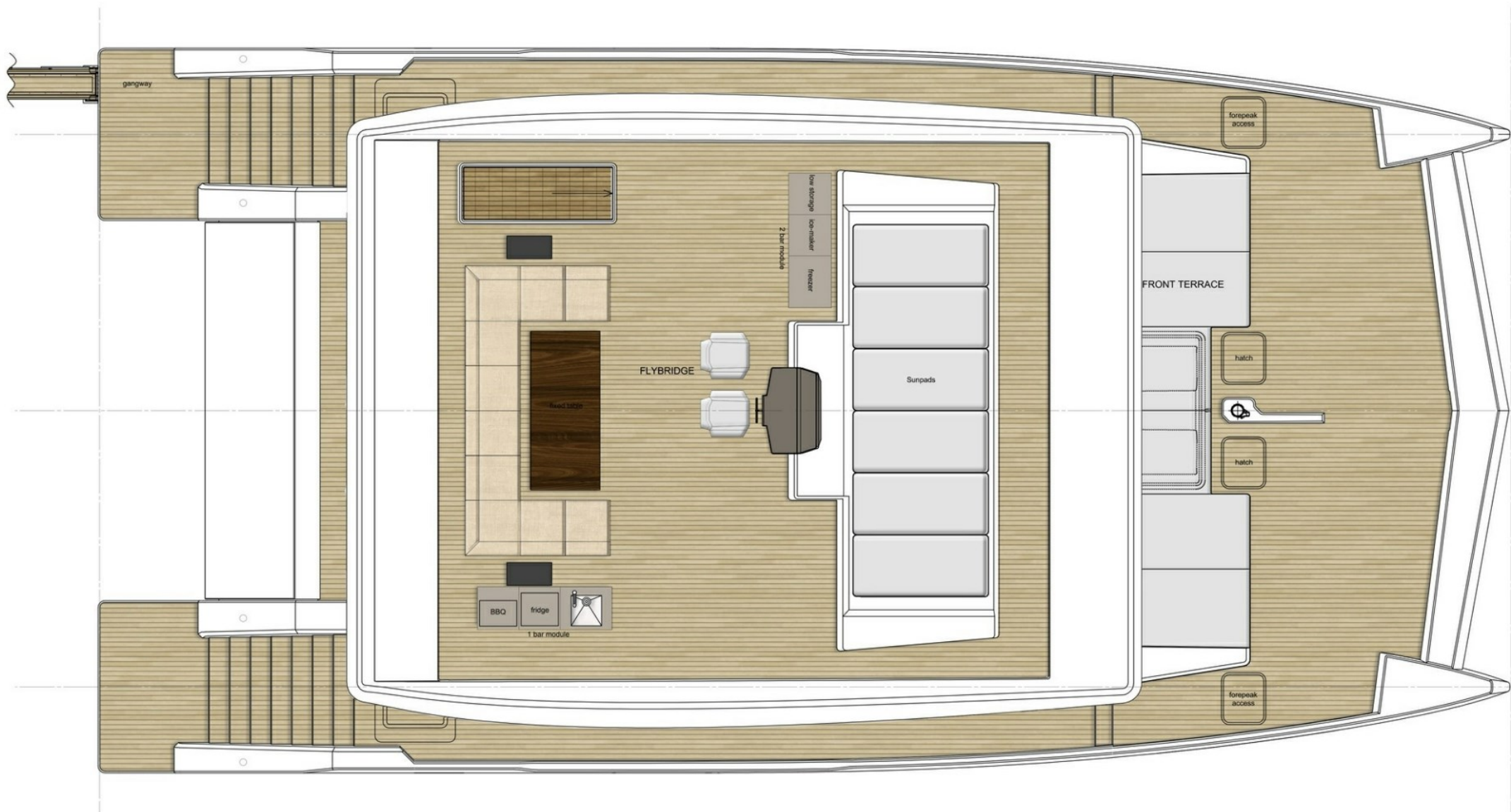
Inflatable toys



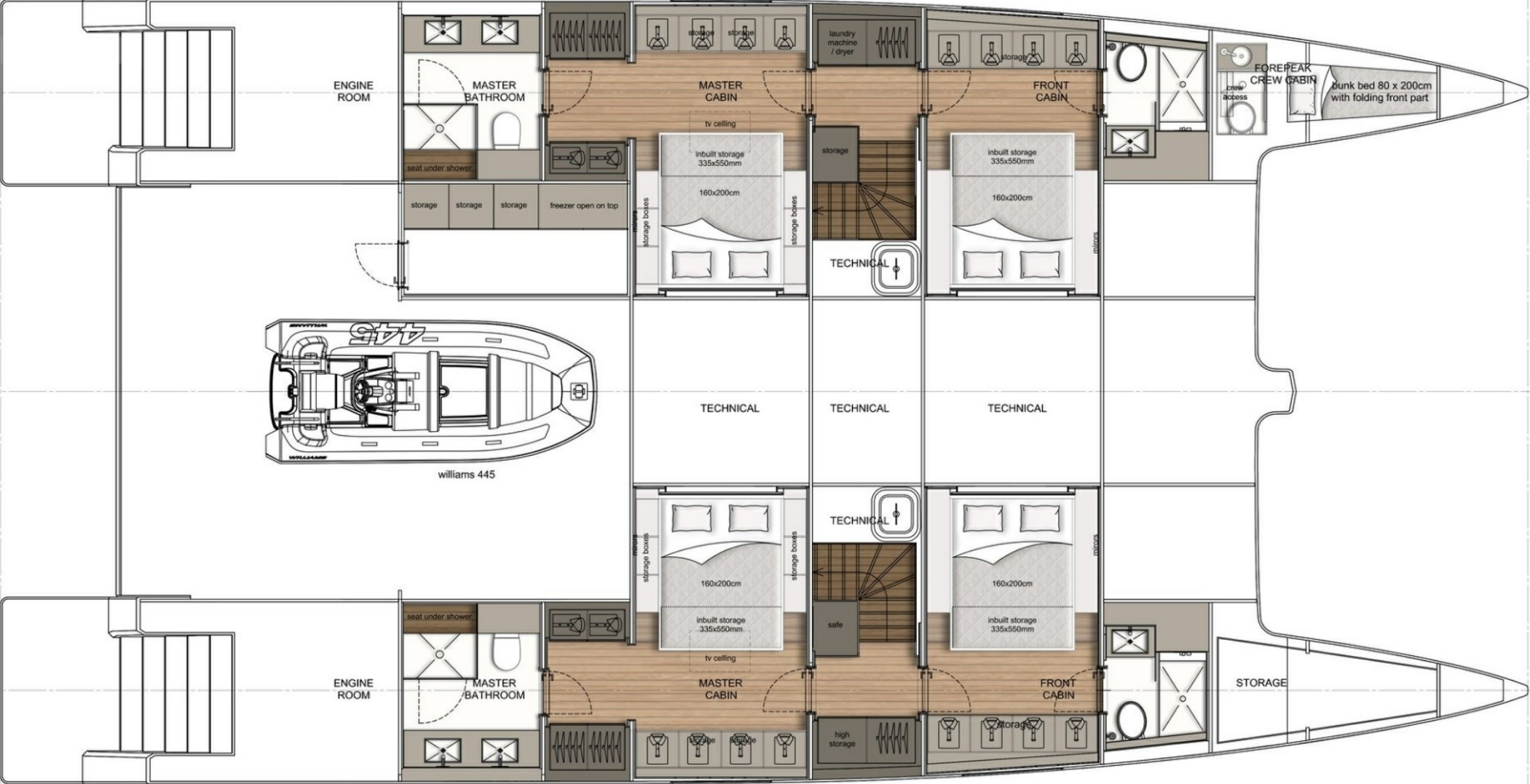
Fishing gear



Snorkelling gear







BURGESS

WORLD CLASS. WORLD WIDE.

London +44 20 7766 4300	Monaco +377 97 97 81 21	New York +1 212 223 0410	Miami +1 305 672 0150	Singapore +65 9665 8990	Beverly Hills +1 310 424 5112	Palma +34 971 495 413	Athens +30 210 967 1661
Dubai +971 4 425 5874	Phuket +66 7623 9739	Hong Kong +852 6496 2094	Tokyo +81 46 738 8612	Sydney +61 499 945 557	Mumbai +91 98211 67253	Shanghai +86 187 0898 6800	Rio de Janeiro +55 21 2553-3238

Advertising of these vessel(s) in printed publications, on the internet or in any other medium is not permitted without prior written permission from Burgess. All particulars are given in good faith and are believed correct but they cannot be guaranteed.

Last updated: 10 December 2024