

CHASSEUR



CHASSEUR

APERÇU.

Launched in 2016, the 160' (48.80m) motor yacht CHASSEUR is a yacht to behold for visionary clients with a taste for the premium yachting experience. This superyacht was carefully constructed by renowned builder Christensen Yachts to the finest detail for the ideal on-water getaway. Outfitted with Quantum Zero Speed stabilizers, CHASSEUR ensures that guests can enjoy extensive cruising, relaxing in her lavish welcoming atmosphere. Her breathtakingly fashionable VARO interior spotlights soothing, unobtrusive qualities – elegantly decorated in a mixture of the finest polished woods from around the world across her walls and flooring. Her palatial interior skylounge, accented in velvety rugs, offers guests a full bar with plush seating and a card table for entertainment. For entertainment and dining, the formal dining salon features a custom-made Armani table and a splendid staircase with floating glass stairs

CHASSEUR contains six capacious cabins to serve as many as 13 guests aboard. Reminiscent of an NYC penthouse, the full-beam master stateroom features a personal office, his-and-hers walk-in closets and an immaculate en-suite bathroom. The creative VIP suite is outfitted with beautiful embellishments from Hermes and Jean-Michel Frank and a king-size bed. Masterfully designed, the VIP en-suite bathroom features Esmeralda green onyx detailing and under-floor heating to maximize guest relaxation and rejuvenation. The superyacht's remaining three guest cabins demonstrate the dedication of the builder to maximizing guest comfort, offering a variety of sleeping options, multiple entertainment amenities, iPad interfaces and their own en-suite bathrooms. Uniquely, CHASSEUR offers a large elevator that services every deck including the sundeck, a feature rarely found in yachts under 200 feet.

This yacht truly embodies the vision of her builders to optimize the ocean views via her spacious open-air sundeck with chic undercover dining and a saloon to harmonize both aesthetics and enjoyment. She features a massive spa with a perfect view of the water and opulent lounge areas with sunpads or optional shade. Aft of the sundeck, guests can enjoy water recreation with her expansive swim platform capable of hosting numerous tenders and toys. With her maintenance-friendly fiberglass construction and special class surveys completed, CHASSEUR is the perfect superyacht for many years to come.

Principales caractéristiques

2017 World Superyacht Awards - Judges' Special Achievement

Zero Speed stabilizers to reduce any rolling motion while at anchor

Elevator servicing all decks

Flexible cabin configurations

Exercise equipment

CHASSEUR

Cruising



Aerial view



Aerial view



Sun deck



CHASSEUR

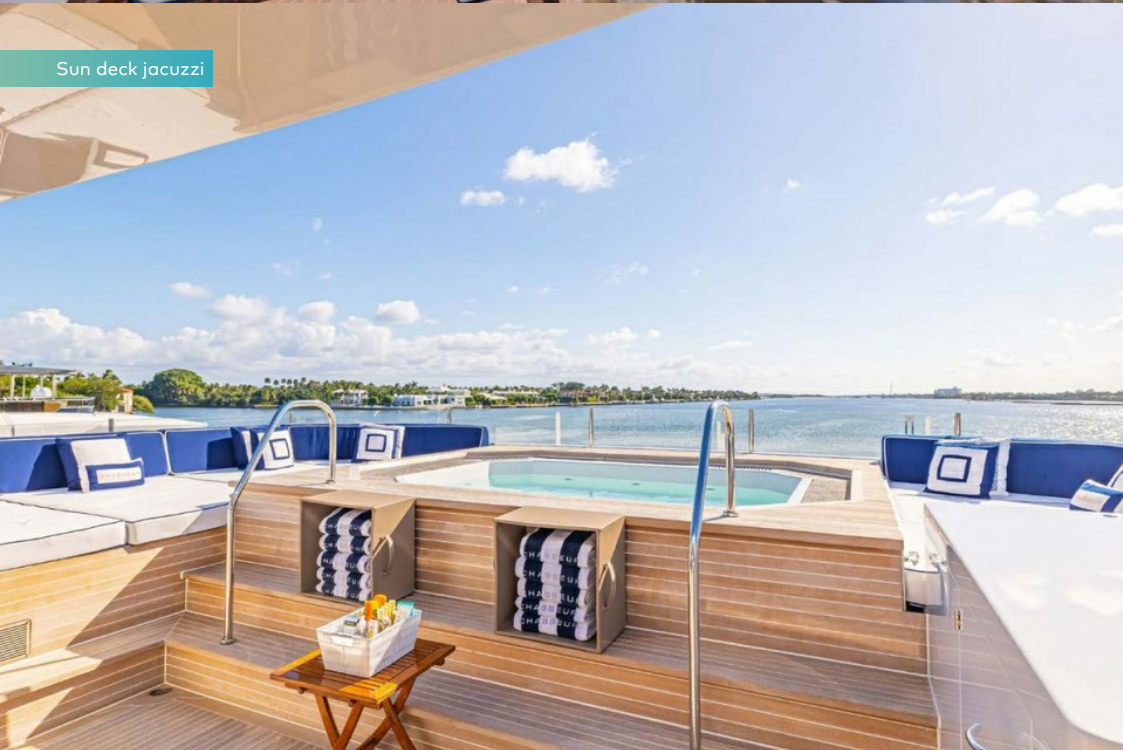
Sun deck



Sun deck



Sun deck jacuzzi



Foredeck



CHASSEUR

Foredeck



Bridge deck aft



Bridge deck aft



Main deck aft



CHASSEUR

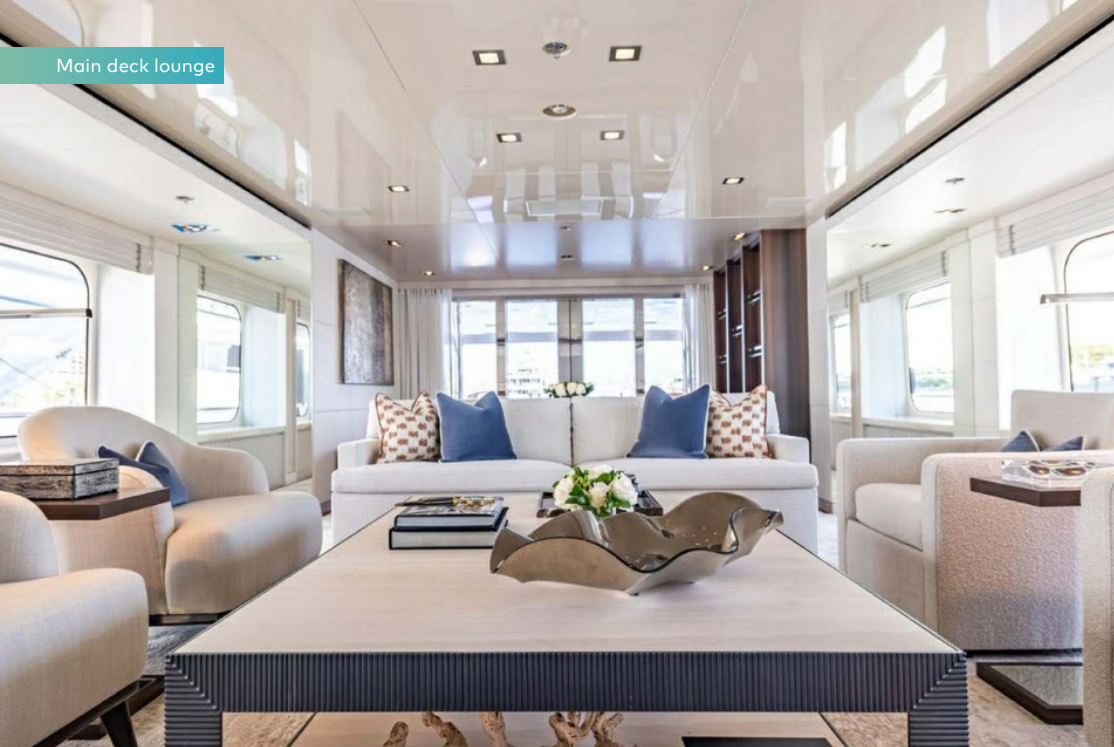
Main deck aft



Main deck lounge



Main deck lounge



Main deck dining area



CHASSEUR

Sky lounge



Sky lounge



Bridge



Bridge



CHASSEUR

Main deck master cabin



Main deck master cabin



Master bathroom en suite

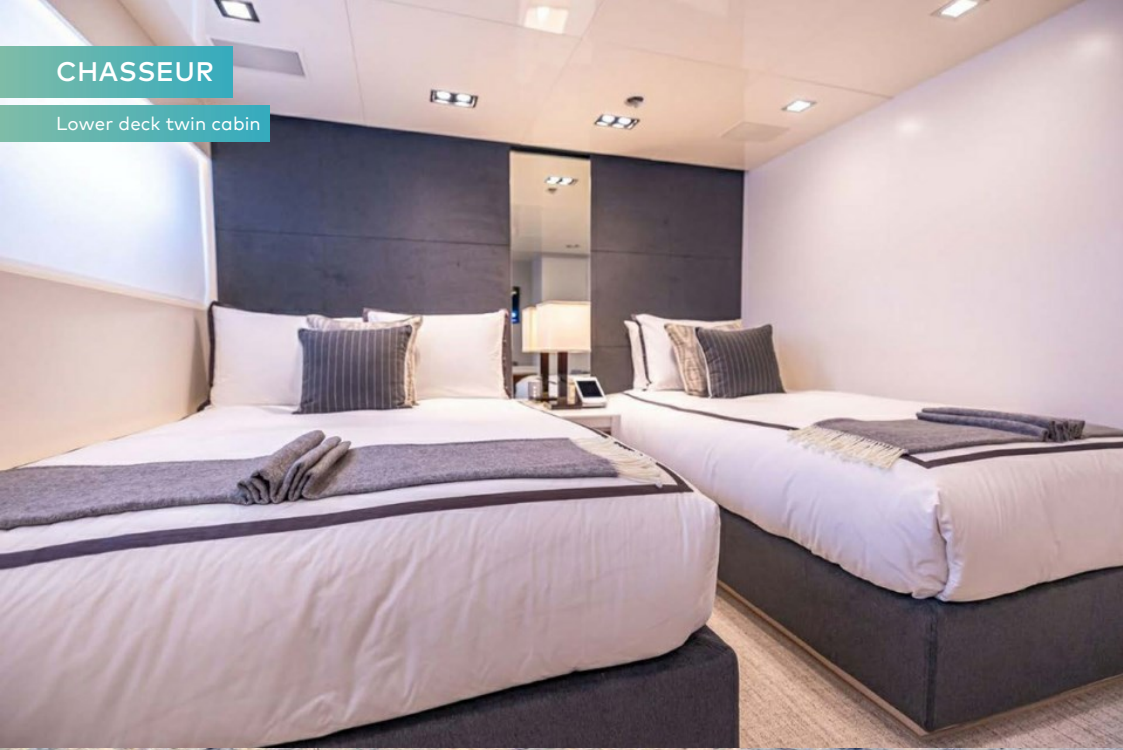


Lower deck double cabin



CHASSEUR

Lower deck twin cabin



Cruising



Cruising



BURGESS

Discover the difference.
burgessyachts.com



CHASSEUR SPÉCIFICATIONS.



Longueur
50m



Chantier
2017 (refitted 2022), Christensen Shipyards,
United States Of America



Designer d'intérieur
Patrick Knowles Design



Largeur
9m



Tirant d'eau
2,4m



Tonnage brut
499



Vitesse de croisière
12 knots



Vitesse maximale
15 knots



Consommation de carburant en vitesse de croisière
308 litres par heure



Moteurs
2 x 1 875hp Caterpillar



Invités
13



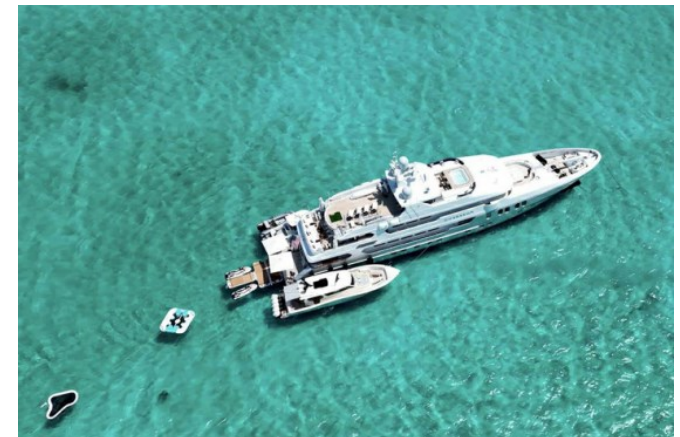
Nb de cabines invités
6 (5 x double, 1 x twin, 1 x additional berths)



Équipage
9

[Voir le yacht sur le site](#)

[Regarder la vidéo du yacht](#)



Annexes & jeux nautiques



1 x Towed tender



2 x Tenders



1 x Deck jacuzzi



Anti-jellyfish pool



Inflatable platform



RYA training centre for jetskis
& waverunners



2 x Waverunners



4 x SeaBobs



1 x Jetsurf



4 x eFoils



2 x Kayaks



2 x Stand up paddleboards



Wakeboard



Surfboard



Kite surfing equipment



Waterskis



Inflatable tows



Fishing gear



Snorkelling gear

Remise en forme & bien-être



Cross trainer



Free weights



Pedal bike



Rowing machine



Upright stationary bike



Yoga mats





BURGESS

WORLD CLASS. WORLD WIDE.

London +44 20 7766 4300	Monaco +377 97 97 81 21	New York +1 212 223 0410	Miami +1 305 672 0150	Singapore +65 9665 8990	Beverly Hills +1 310 424 5112	Palma +34 971 495 413	Athens +30 210 967 1661
Dubai +971 4 425 5874	Phuket +66 7623 9739	Hong Kong +852 6496 2094	Tokyo +81 46 738 8612	Sydney +61 499 945 557	Mumbai +91 98211 67253	Shanghai +86 187 0898 6800	Rio de Janeiro +55 21 2553-3238

La publicité de ce(s) navire(s) dans des publications imprimées, sur Internet ou sur tout autre support n'est pas autorisée sans l'autorisation écrite préalable de Burgess.
Toutes les informations sont données de bonne foi et sont considérées comme exactes, mais elles ne peuvent être garanties.

Dernière mise à jour : 10 mai 2024