

# CHAMPAGNE SEAS

---



# OVERVIEW.

**TSUMAT is a head-tuner in any anchorage, and on board she is equally glamorous as she was refitted in 2020 with a cool, modern interior that offsets stunning pieces of art. Ready to entertain a party of 12, she will give you an unforgettable charter - with fast passage along the coast, spacious decks to explore and water toys galore.**

Wake up in the master suite with 180 degree views from the king sized bed. Step down in this split level suite to the his and hers en suite and separate dressing space – designed for you to start the day relaxed and rested.

Take breakfast in bed, or head to the main deck aft, and you'll find that the cuisine lives up to your expectations. Fresh fruit smoothies, pastries, local honey, fluffy pancakes – so many options for the most important meal of the day.

Life aboard takes on slower pace as you ease into your time away and enjoy spending time with your family and friends. Everyone looks forward to fun on the water, and TSUMAT has everything ready - whether it's just a morning dip off the swim platform astern, or a full-on scuba diving session.

Adrenalin junkies will want to try out the Yamaha waverunner, wakeboard and waterskis stashed away in the transom garage. Others would rather try their skills on a paddleboard or kayak. All can be done safely and with expert instruction from the yacht's professional crew.

The upper aft deck is the spot for lunch. The sociable round table welcomes you with a fine spread of freshly caught fish and baked breads. If the mood takes you to make it a long lunch, the sky lounge bar is just a step through the full-length glass doors to order something thirst-quenching.

TSUMAT is no slouch underway, making an easy 18 knots at cruising speed and 23 knots flat out – perfect to make it to a dinner reservation in the next port. Fine dining aboard in the contemporary saloon is another option to savour.

A grand central staircase will take you all to your suites. The master suite is on the main deck, and there are four more on the lower deck: two VIP suites and two twins sleep another eight. Plus there's the option to create a sixth suite in the sky lounge if your party requires.

But the evening isn't over yet – head to the sun deck for a party at the bar, while taking in the atmosphere. A soak in the jacuzzi before bed is the perfect way to unwind and feel the magic of your holiday afloat.

## Key features

---

**Recently refitted**

---

**Exercise equipment**

---

**Jacuzzi on the sun deck**

---

**Zero speed stabilisers to reduce any rolling motion while at anchor**

---

# CHAMPAGNE SEAS

Aerial Shot



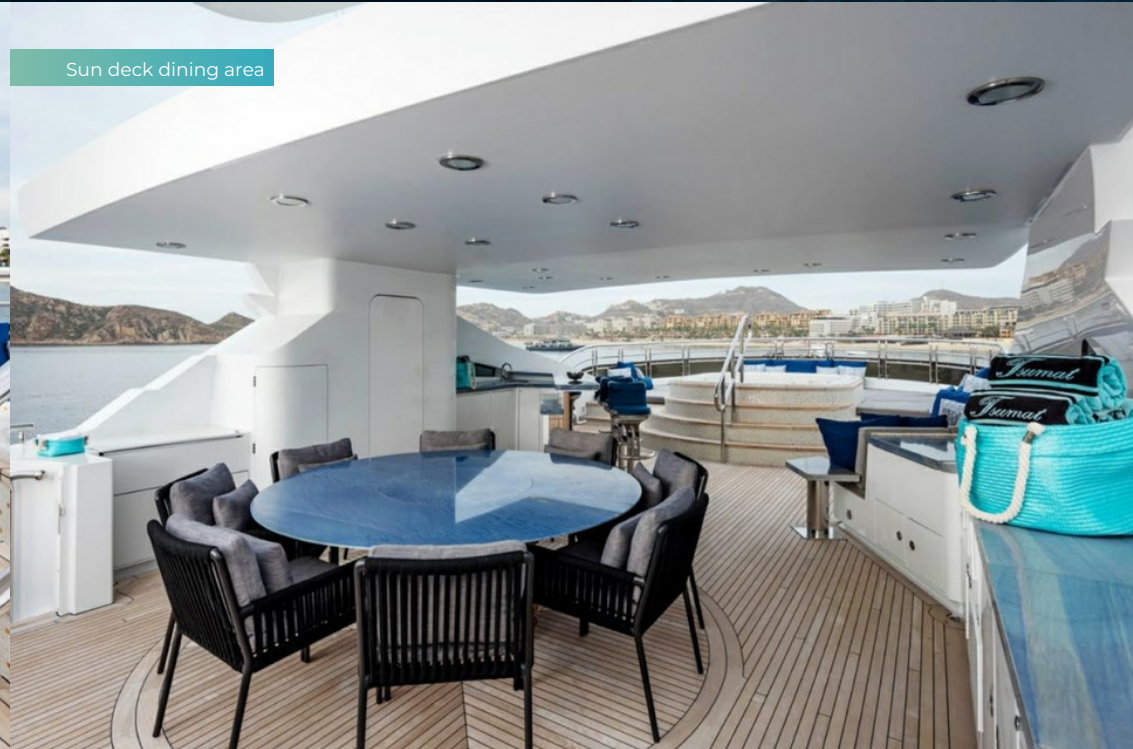
Aerial view



Sun deck bar



Sun deck dining area



# CHAMPAGNE SEAS

Sun deck aft



Bridge deck aft



Main deck aft



Main deck aft



# CHAMPAGNE SEAS

Foredeck



Main deck lounge



Main deck dining area



Sky lounge



## CHAMPAGNE SEAS

Sky lounge and bar



Main deck master cabin



lower deck double cabin



Guest bathroom en suite



# CHAMPAGNE SEAS

lower deck double cabin



Lower deck twin cabin



Lower deck twin cabin en suite



Lower deck twin cabin



## CHAMPAGNE SEAS

Water toys





## CHAMPAGNE SEAS

# SPECIFICATION.



Length  
**50m (164ft)**



Built  
**2012 (refitted 2025), Trinity Yachts, United States Of America**



Interior designer  
**Espinosa Yacht Design/Ramon Alonso**



Beam  
**8.5m (27.9ft)**



Draft  
**2.3m (8.9ft)**



Gross tonnage  
**499**



Cruising speed  
**18 knots**



Maximum speed  
**23 knots**



Fuel consumption at cruising speed  
**654 litres per hour**



Engines  
**2 x 3,384hp Caterpillar**



Guests  
**12**

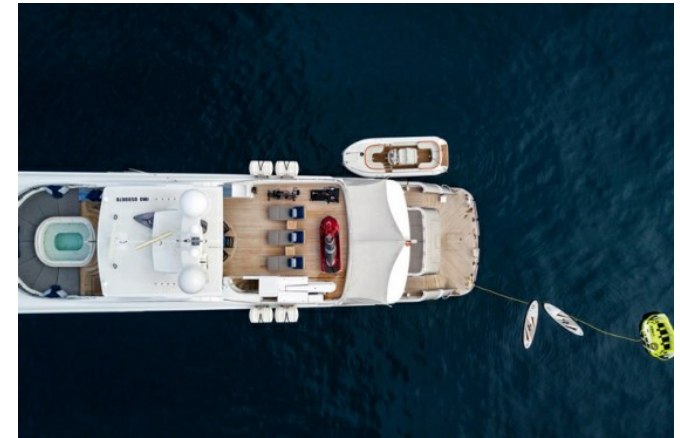


No. of guest cabins  
**6 (4 x double, 2 x twin)**



Crew  
**9**

[View yacht on website](#)



CHAMPAGNE SEAS

# TENDERS & TOYS



1 x Tender



1 x Deck jacuzzi



1 x Waverunner



3 x Kayaks



1 x Stand up paddleboard



Wakeboard



Waterskis



Waterslide



Inflatable tows



Scuba diving equipment

7.1m Castoldi tender, Yamaha waverunner, waterslide from sun deck, wakeboard, waterskis, 3 x kayaks, stand up paddle board, 2 x doughnuts, Proton towable, banana, 5 x diving equipment. PADI Dive Program onboard

CHAMPAGNE SEAS

# FITNESS & WELLNESS



Cross trainer

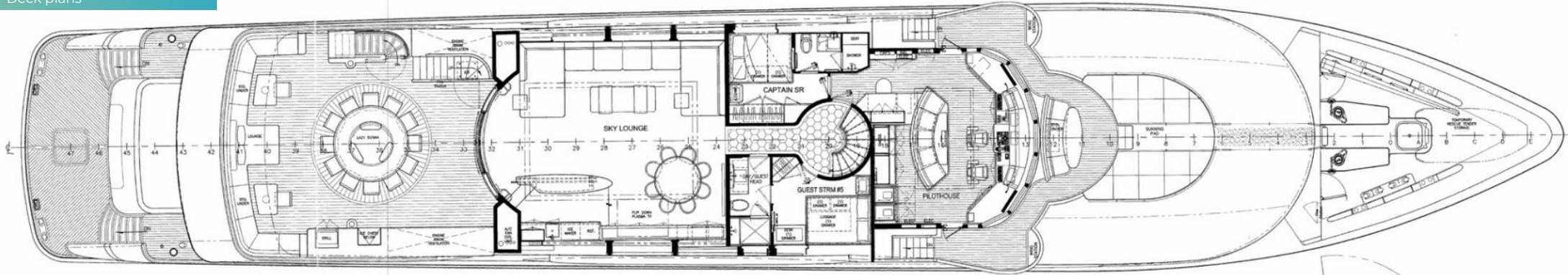


Treadmill

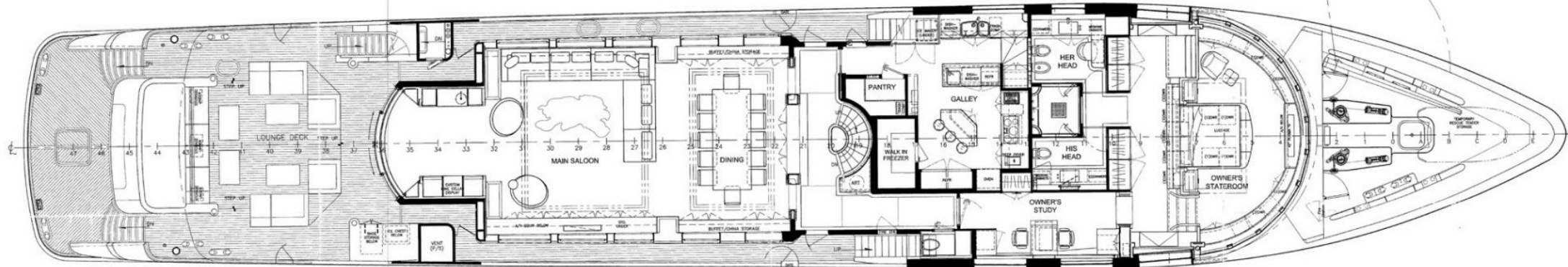


# CHAMPAGNE SEAS

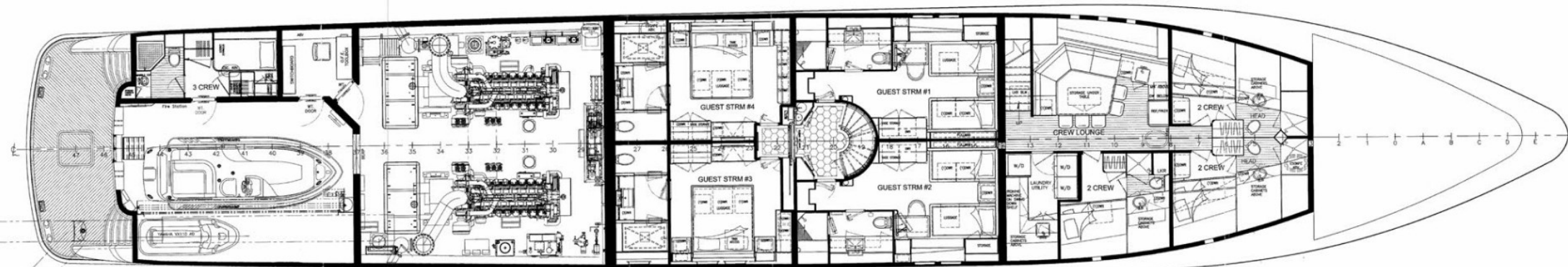
Deck plans



01 DECK



MAIN DECK



LOWER DECK

# BURGESS

# WORLD CLASS. WORLD WIDE.

<b>London</b> +44 20 7766 4300	<b>Monaco</b> +377 97 97 81 21	<b>New York</b> +1 212 223 0410	<b>Miami</b> +1 305 672 0150	<b>Singapore</b> +65 9665 8990	<b>Beverly Hills</b> +1 310 424 5112	<b>Palma</b> +34 971 495 413	<b>Athens</b> +30 210 967 1661
<b>Dubai</b> +971 4 425 5874	<b>Phuket</b> +66 7623 9739	<b>Hong Kong</b> +852 6496 2094	<b>Tokyo</b> +81 46 738 8612	<b>Sydney</b> +61 499 945 557	<b>Mumbai</b> +91 98211 67253	<b>Shanghai</b> +86 187 0898 6800	<b>Rio de Janeiro</b> +55 21 2553-3238
<b>Aspen</b> +1 970 710 2294							

Advertising of these vessel(s) in printed publications, on the internet or in any other medium is not permitted without prior written permission from Burgess. All particulars are given in good faith and are believed correct but they cannot be guaranteed.

Last updated: 03 March 2025