

# CARYALI

---





CARYALI

# SPECIFICATION.



Asking price  
**USD 22,500,000**



Built  
**2013, Alloy Yachts, New Zealand**



Length  
**41.2m (135ft)**



Beam  
**8.9m (29.2ft)**



Draft  
**2.8m (9.2ft)**



Gross tonnage  
**470**



Cruising speed  
**12.6 knots**



Maximum speed  
**15.2 knots**



Range  
**4,000 nm at 10 knots**



Flag  
**Cayman Islands**



Lying  
**West Mediterranean**



Class  
**Lloyd's Register (LR) +100A1 SSC Yacht Mono G6; LY2**



Exterior designer  
**Rene van der Velden**



Interior designer  
**RWD**



Construction  
**Hull - Steel, Superstructure - Aluminium, Deck - Teak**



Crew  
**8**



Guests  
**10**



Cabins  
**5 (3 × double, 2 × twin)**



Engines  
**2 × 1,301hp Caterpillar**



Propulsion  
**Twin screw diesel yacht**

## Note

Not available for sale to US residents while in US waters.

[View yacht on website](#)

[Watch yacht video](#)





CARYALI

Cruising



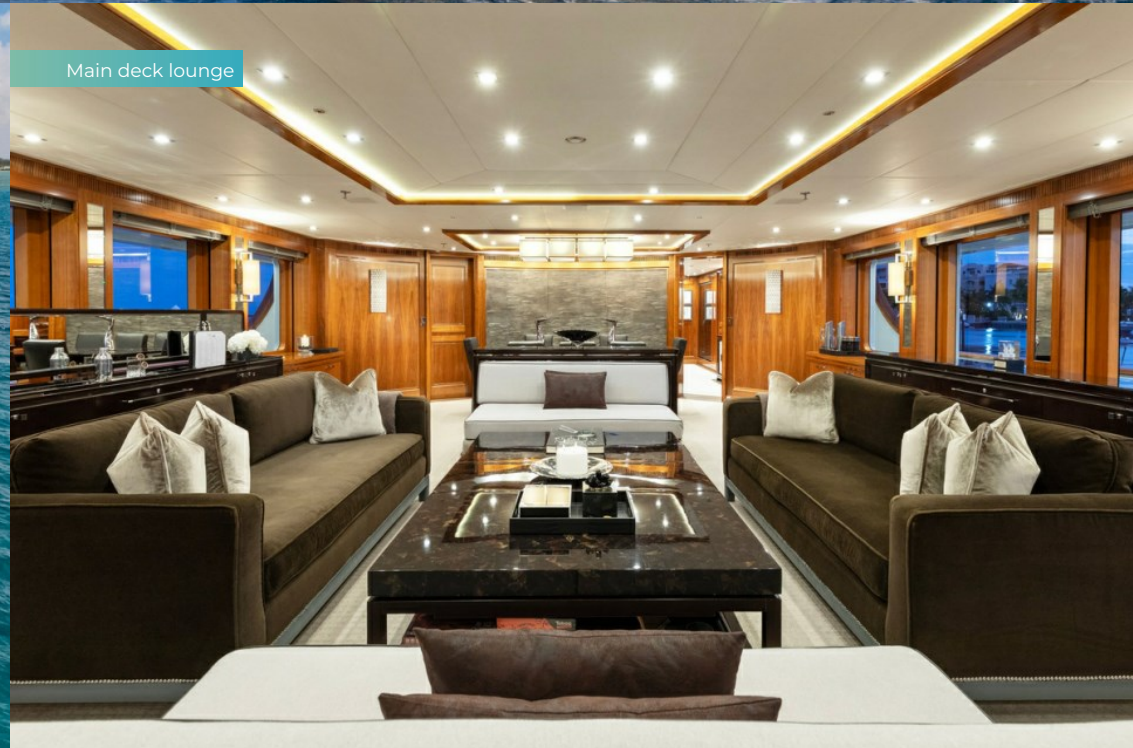
Cruising



Cruising



Main deck lounge



BURGESS

Discover the difference.  
burgessyachts.com





## CARYALI

Main deck lounge



Main deck lounge



Main deck dining area



Detail





CARYALI

Master cabin



Master cabin



Master en suite hers



Master en suite his



BURGESS

Discover the difference.  
burgessyachts.com



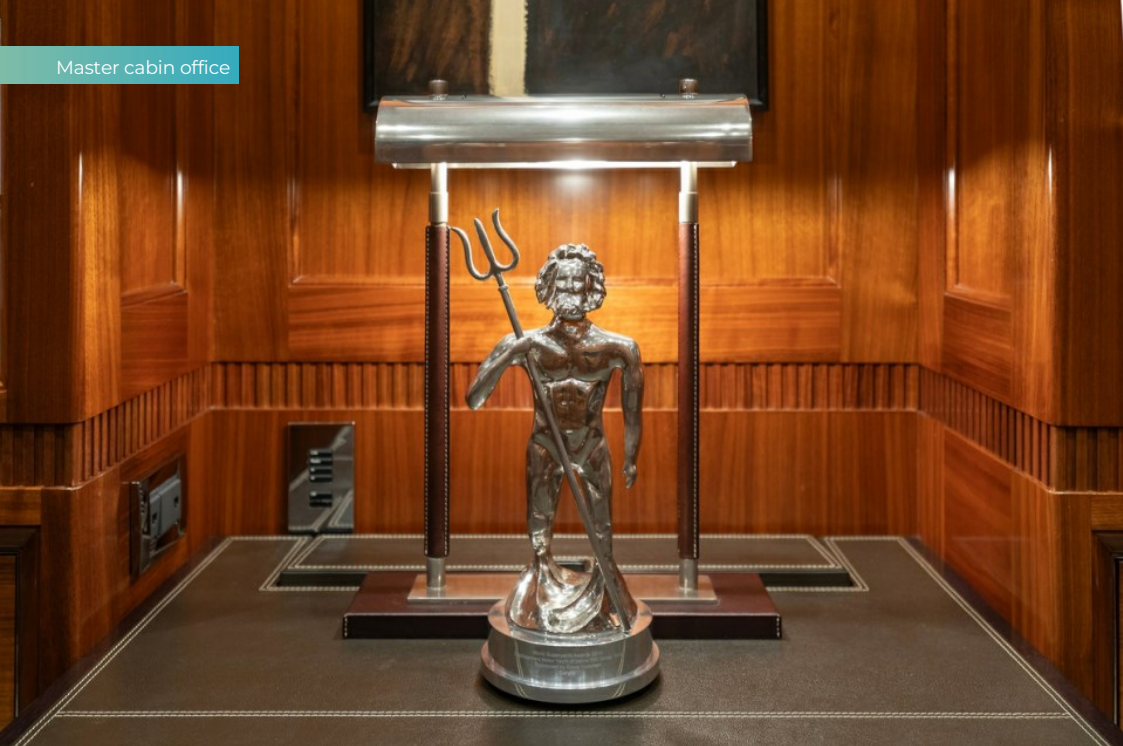


CARYALI

Master cabin office



Master cabin office



Guest stairwell



Starboard VIP cabin



BURGESS

Discover the difference.  
burgessyachts.com





## CARYALI

Starboard VIP cabin en suite



Guest level coffee



Bridge



Skylounge





CARYALI

Skylounge bar



Sun deck aft



Sun deck aft



Sun deck



BURGESS

Discover the difference.  
burgessyachts.com





CARYALI

Sun deck bar



Sun deck forward jacuzzi



Sun deck forward jacuzzi



Crow's nest



BURGESS

Discover the difference.  
burgessyachts.com





CARYALI

Bridge deck aft



Portuguese bridge



Main deck aft



Main deck aft



BURGESS

Discover the difference.  
burgessyachts.com





CARYALI

Port side main deck walkaround



Cym



Engine room



Galley



BURGESS

Discover the difference.  
burgessyachts.com





CARYALI

Swim platform



Swim platform



Swim platform door open



Starboard guest boarding ladder



BURGESS

Discover the difference.  
burgessyachts.com





CARYALI

Underway



Stern view



Bow view



Aerial view



BURGESS

Discover the difference.  
burgessyachts.com





# OVERVIEW.

**Designed by the acclaimed Dutch architect René van der Velden, the multi-award winning 41.2m (135ft) expedition yacht CARYALI seamlessly blends luxury with exceptional performance. Crafted by the prestigious New Zealand shipyard Alloy Yachts, CARYALI is positioned as one of the finest global explorer yachts in her class. With accolades such as the World Superyacht Award, the Showboats Design Award, and the International Superyacht Society Award, CARYALI has cemented her reputation of excellence. Tailored for worldwide exploration, she is equally capable of turning heads in glamorous Mediterranean hotspots with her sleek, elegant exterior. CARYALI presents in immaculate condition having never chartered and only one owner since completion.**

The yacht's standout feature is her wave-breaking bulbous bow, which guarantees efficient long-range cruising. CARYALI's walkaround decks and crow's nest offer superb vantage points for enjoying marine life, while the forward storage area for tenders and toys ensures effortless access to water activities. The seamless integration of indoor and outdoor spaces fosters a harmonious flow, enhancing the overall experience on board.

Accommodating up to 10 guests in five luxurious cabins, CARYALI exudes a family-friendly, yet sophisticated interior. The design, a collaborative effort between the owners and renowned British design house RWD, combines functionality with opulence, using the finest materials. The full-beam master suite on the main deck offers unmatched comfort, while the lower deck features two spacious double cabins and two twin cabins. Throughout the yacht, rich walnut paneling, leather accents, stainless steel details, exquisite marble, and premium textiles enhance the atmosphere of refined luxury.

The main salon, with its expansive layout, flows seamlessly into the formal dining area, which features a striking hand-etched bulkhead panel inspired by Monet's iconic water lilies. The upper deck offers a laid-back yet elegant atmosphere. The skylounge, designed to suit any climate, boasts retractable glass walls that offer panoramic views. Heat lamps are strategically placed across all decks, ensuring year-round comfort for guests.

CARYALI's extensive exterior decks are complemented by a state-of-the-art gym offering ocean views when the stern door is open, or equally impressive vistas through large windows when closed. The expansive sun deck is a haven for relaxation, featuring a wrap-around bar, al fresco dining, and a large jacuzzi located forward.

After just completing her Lloyd's 10-year survey and receiving new paint, CARYALI is fully prepared for immediate cruising. Powered by twin Caterpillar C32 ACERT engines, she cruises at 12.6 knots and can reach a top speed of 15.2 knots. With her superior seaworthiness and impressive 4,000nm range, CARYALI is ready to take you on extraordinary journeys to the farthest corners of the world.

## Key features

---

**Recipient of ALL three major superyacht awards since launch**

---

**Accommodation for 10 guests in five luxurious cabins**

---

**Stunning interior design from RWD**

---

**Elegant exterior design by René van der Velden Yacht Design**

---

**Never chartered and only one owner since completion**

---

**10-year Lloyd's survey completed in 2024**

---

**Full repaint completed in 2024**

---

**Jacuzzi, wrap-around bar, and al fresco dining table on sun deck**

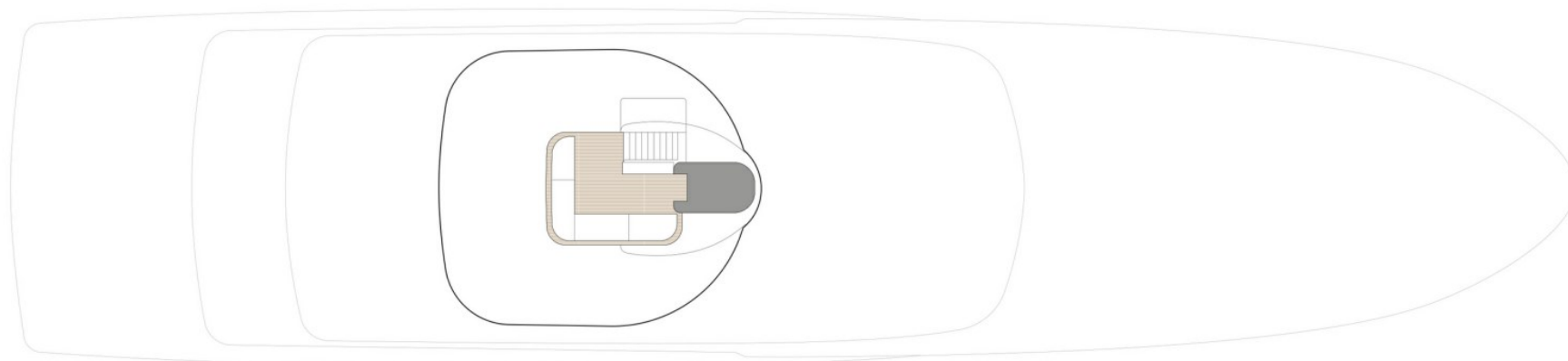
---

**Accommodation for eight crew onboard to ensure a luxury yacht experience**

---



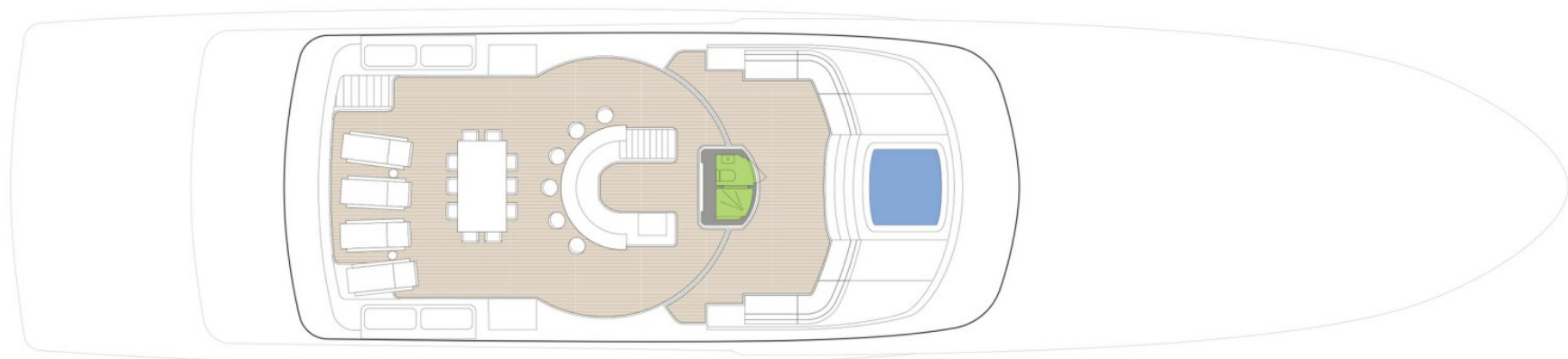
## CROW'S NEST ACCESS DECK



 GUEST AREAS  MASTER SUITE  GUEST CABINS  GYM  JACUZZI



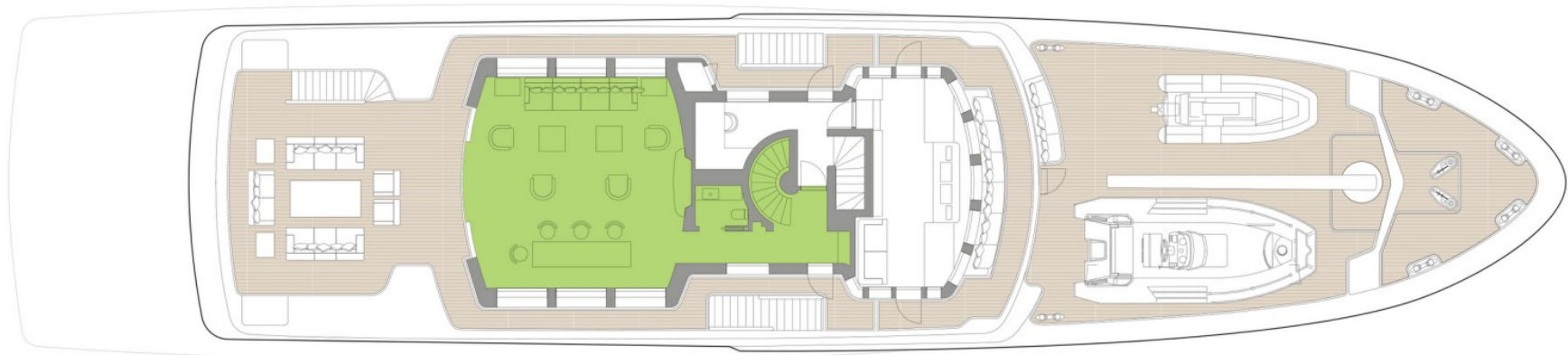
# SUN DECK



 GUEST AREAS  MASTER SUITE  GUEST CABINS  GYM  JACUZZI



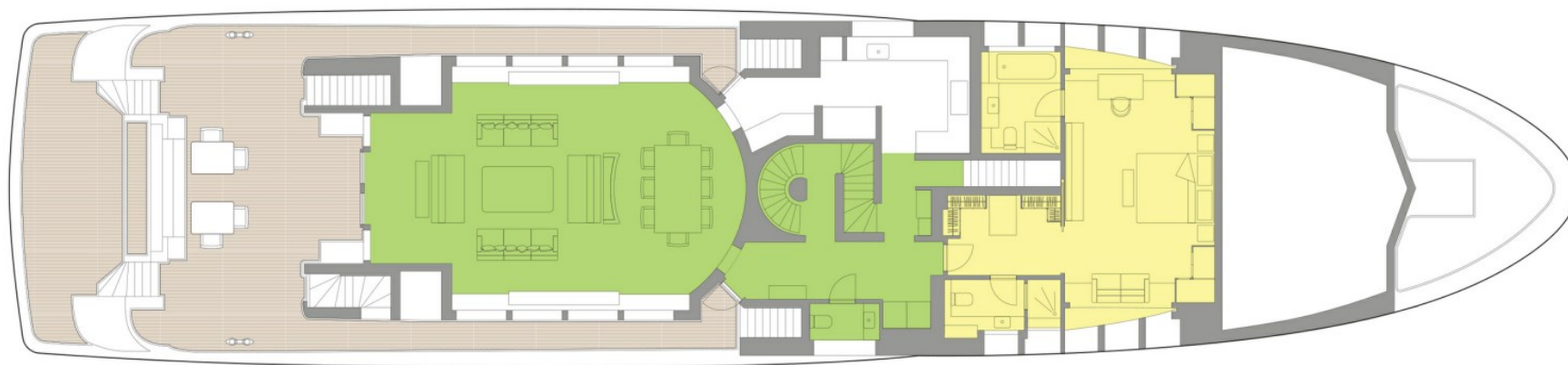
# BRIDGE DECK



GUEST AREAS  MASTER SUITE  GUEST CABINS  GYM  JACUZZI



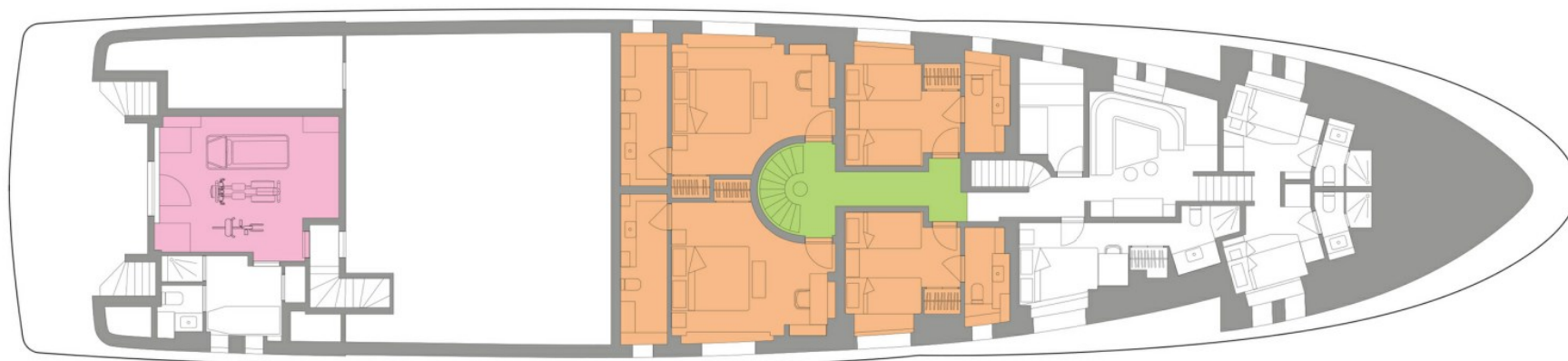
# MAIN DECK



GUEST AREAS  MASTER SUITE  GUEST CABINS  GYM  JACUZZI



# LOWER DECK



 GUEST AREAS  MASTER SUITE  GUEST CABINS  GYM  JACUZZI



# BURGESS

# WORLD CLASS. WORLD WIDE.

<b>London</b> +44 20 7766 4300	<b>Monaco</b> +377 97 97 81 21	<b>New York</b> +1 212 223 0410	<b>Miami</b> +1 305 672 0150	<b>Singapore</b> +65 9665 8990	<b>Beverly Hills</b> +1 310 424 5112	<b>Palma</b> +34 971 495 413	<b>Athens</b> +30 210 967 1661
<b>Dubai</b> +971 4 425 5874	<b>Phuket</b> +66 7623 9739	<b>Hong Kong</b> +852 6496 2094	<b>Tokyo</b> +81 46 738 8612	<b>Sydney</b> +61 499 945 557	<b>Mumbai</b> +91 98211 67253	<b>Shanghai</b> +86 159 0162 1898	<b>Rio de Janeiro</b> +55 21 2553-3238
<b>Aspen</b> +1 970 710 2294							

Advertising of these vessel(s) in printed publications, on the internet or in any other medium is not permitted without prior written permission from Burgess. All particulars are given in good faith and are believed correct but they cannot be guaranteed.

Last updated: 19 June 2025