

CAPRI I

CAPRI I

APERÇU.

CAPRI I is built to the highest standards by Lurssen, features exceptional craftsmanship throughout , equipped with zero speed stabilizers to ensure a smooth cruise.

She is a combination of classic style & modern comfort, designed by Glade Johnson. CAPRI I can accommodate 12 guests in six luxurious cabins including a full beam master with king size bed, vanity, and sitting room. The expansive onyx bathroom features his and hers facilities, 4 closets including a large walk in closet, jacuzzi bathtub and spacious shower. One Twin Guest cabin on the main deck , a further three double and one twin cabin can be found on the lower deck. All guest cabins offer spacious marble bathrooms with tubs.

The yacht offers a fabulous range of contemporary spaces on board for relaxation and entertaining. A classically styled saloon and dining room featuring furniture of precious woods with luxury fabrics are located on the main deck, while the upper deck saloon is light and airy, offering amazing sea views.

Capri I hosts generous dining and seating outside areas for up to 12 guests at the main and upper aft decks. Sunbathing areas are plentiful on her fly bridge, with sun loungers surrounding the large Jacuzzi, and sun pads and further seating situated forward of the bridge. She also boasts a fully equipped gym on the bridge deck, and a fantastic selection of water toys.

Principales caractéristiques

Recently refitted

Regularly maintained

Fully equipped gym

A crew with local expertise

Jacuzzi on the sun deck

Zero speed stabilisers to reduce any rolling motion while at anchor

CAPRI I

Sun deck aft jacuzzi



CAPRI I

SPÉCIFICATIONS.



Longueur
58,6m



Chantier
2003 (refitted 2021), Lurssen-Werft, Germany



Designer d'intérieur
Glade Johnson Design



Largeur
11,1m



Tirant d'eau
3,5m



Tonnage brut
1 226



Vitesse de croisière
13 knots



Vitesse maximale
16 knots



Consommation de carburant en vitesse de croisière
450 litres par heure



Moteurs
2 x 1 957hp Caterpillar



Invités
12



Nb de cabines invités
6 (4 x double, 2 x twin)



Équipage
15

Note

Fully licensed for charters in Greek waters.

[Voir le yacht sur le site](#)



Annexes & jeux nautiques



2 × Tenders



1 × Deck jacuzzi



Trampoline



Inflatable platform



2 × Waverunners



1 × Stand up jetski



2 × SeaBobs



1 × Flyboard



1 × Flyride



2 × Kayaks



4 × Stand up paddleboards



Wakeboard



Waterskis



Inflatable toys



Scuba diving equipment



Snorkelling gear

Remise en forme & bien-être



Boxing equipment



Exercise balls



Free weights



Jump ropes



Multi gym



Resistance bands



Training bench



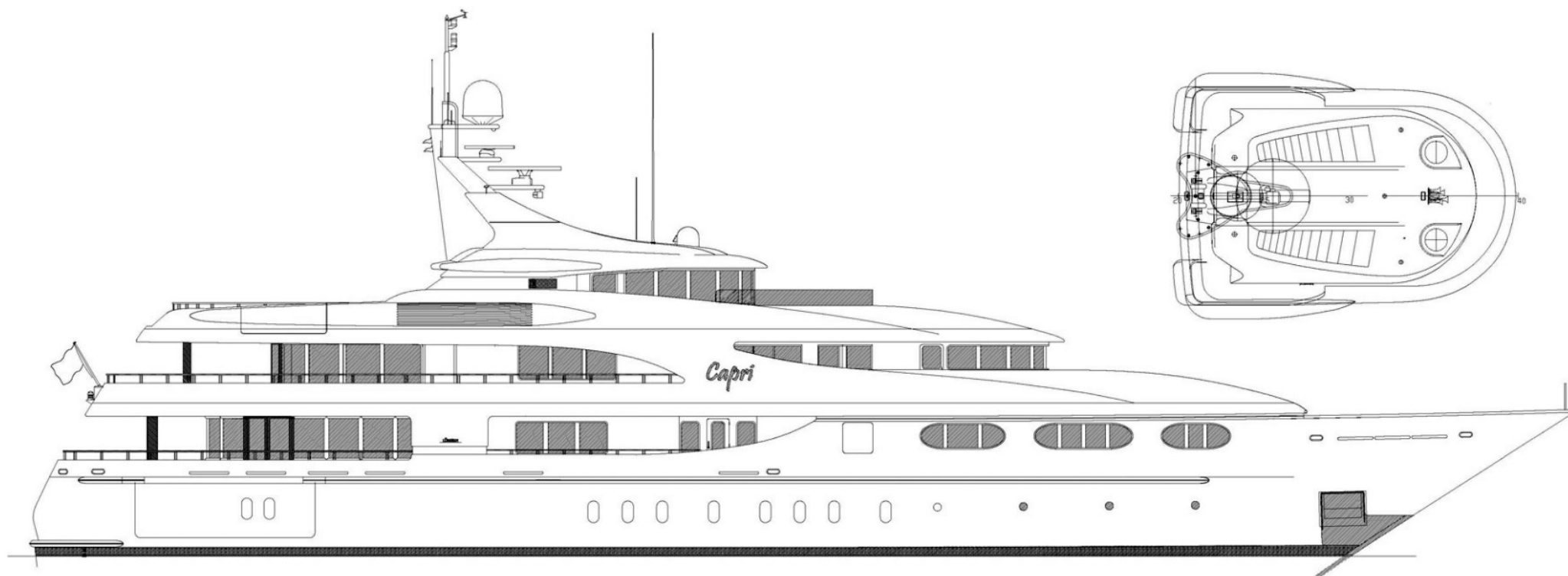
Treadmill



Yoga mats

CAPRI I

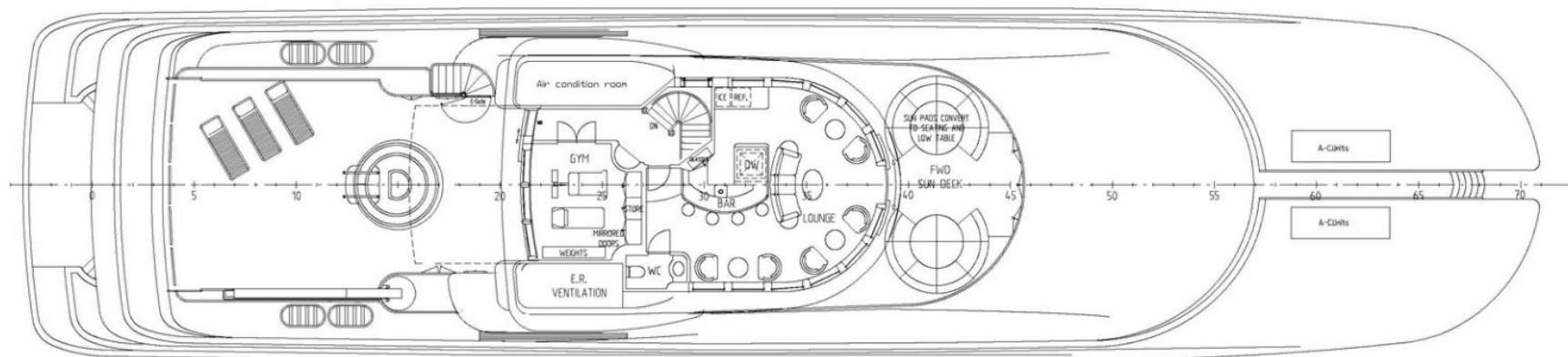
General Arrangement



PROFILE

CAPRI I

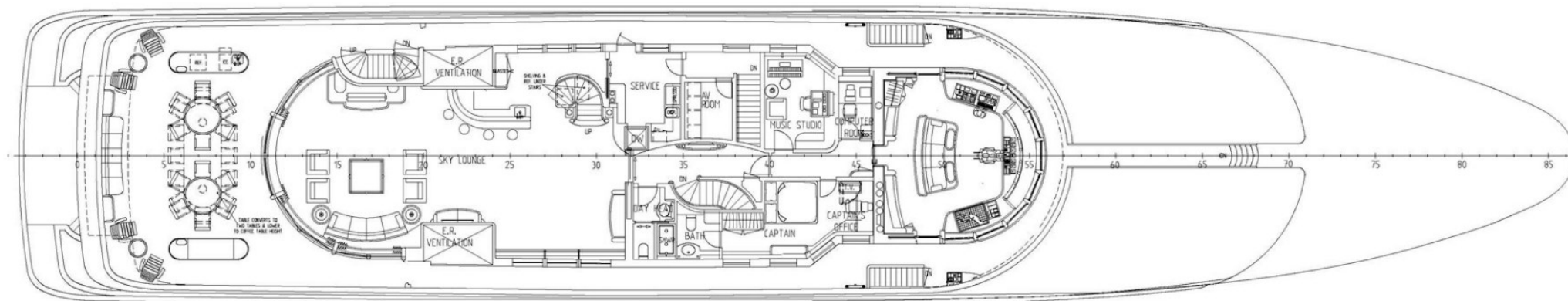
General Arrangement



BRIDGE DECK

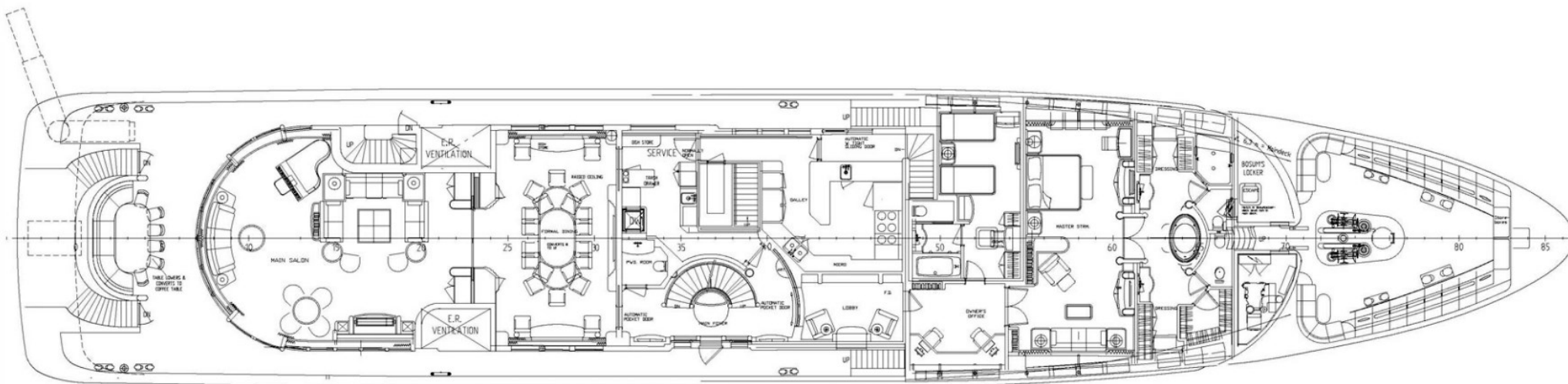
CAPRI I

General Arrangement



UPPER DECK

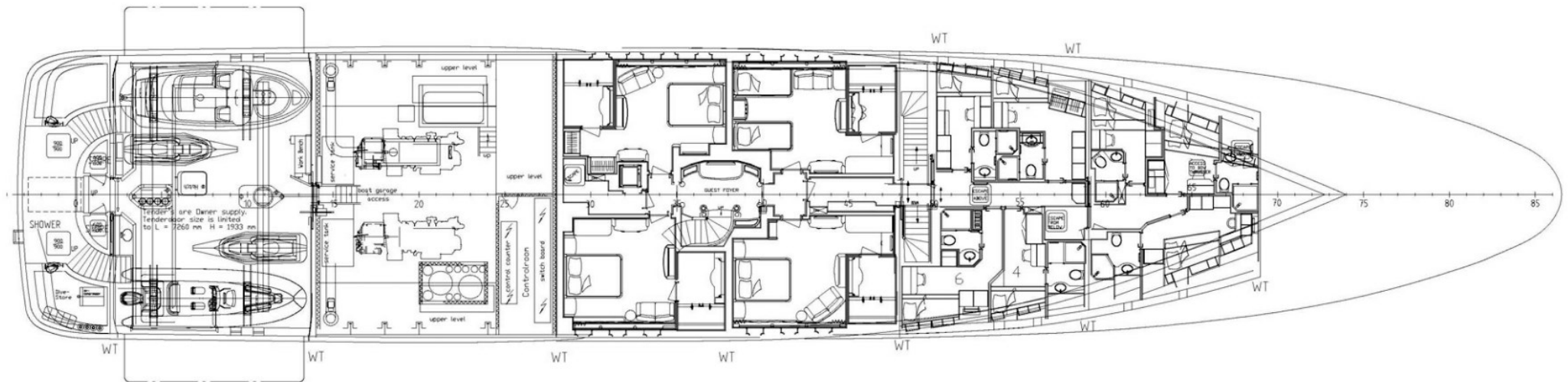
CAPRI 1



MAIN DECK

CAPRI I

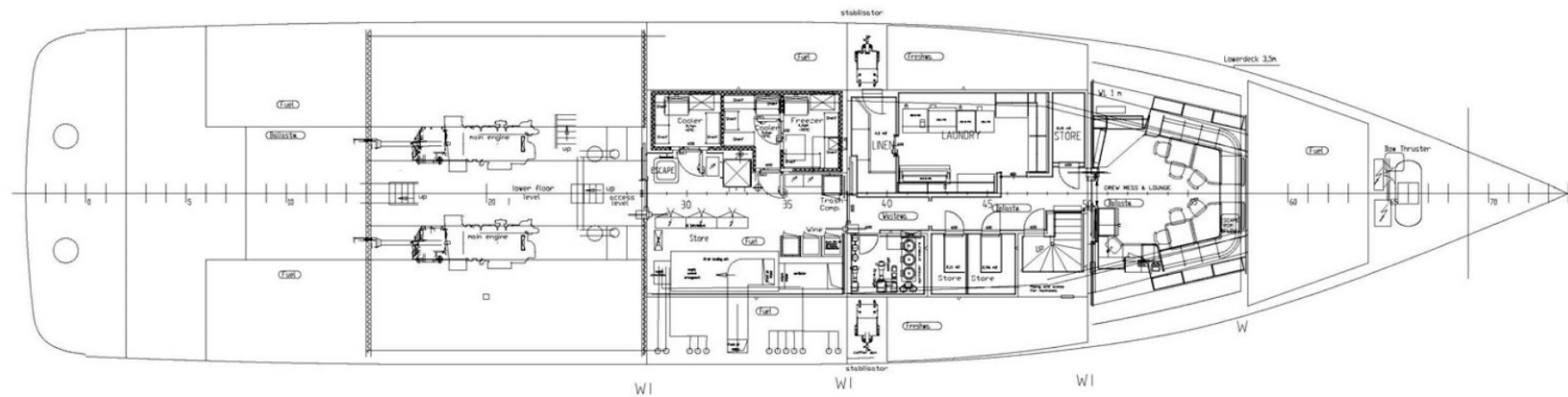
General Arrangement



LOWER DECK

CAPRI I

General Arrangement



TANK DECK

BURGESS

WORLD CLASS. WORLD WIDE.

London +44 20 7766 4300	Monaco +377 97 97 81 21	New York +1 212 223 0410	Miami +1 305 672 0150	Singapore +65 9665 8990	Beverly Hills +1 310 424 5112	Palma +34 971 495 413	Athens +30 210 967 1661
	Dubai +971 4 425 5874	Phuket +66 7623 9739	Hong Kong +852 6496 2094	Tokyo +81 46 738 8612	Sydney +61 499 945 557	Mumbai +91 98211 67253	

La publicité de ce(s) navire(s) dans des publications imprimées, sur Internet ou sur tout autre support n'est pas autorisée sans l'autorisation écrite préalable de Burgess.
Toutes les informations sont données de bonne foi et sont considérées comme exactes, mais elles ne peuvent être garanties.

Dernière mise à jour : 01 mars 2024