

C2



C2

OVERVIEW.

C2 is a pristine 33m (108ft) Mangusta Gransport yacht offering the absolute latest in high-octane performance, high-end luxury and Italian yachting style. Fresh from her launch at the end of summer 2022, she's in absolutely immaculate condition.

What's special about a brand new Mangusta? The 4,000hp quadruple pod drives deliver exhilarating 25 knot performance – at least twice as fast as the average charter yacht. You also get a lot more living space than most sports yachts can offer, inside and out, along with good fuel economy and a remarkably comfortable ride thanks to her advanced hull shape and powerful stabilisers that keep her motion steady at all times.

There's also a huge sunpad and a large open-air lounge on the foredeck – it's the perfect place to relax in the sunshine and enjoy the warm breeze blowing through your hair. When you've had enough sun on your skin, the crew can rig up the foredeck awning for shade.

Up on the sundeck you'll find another spacious, comfortable lounge and outdoor dining area in the shade of the hardtop, plus a chic cocktail bar and more. With two separate social spaces on the top deck alone, plus the spacious lounge in the main deck aft cockpit, everyone can find their own favourite place to relax outdoors with a perfect view.

Step inside and you'll see how Mangusta deserves its reputation for spectacular style. The floor-to-ceiling windows and huge glass doors of the main saloon make this elegant lounge and dining room feel like an outdoor space, with almost uninterrupted panoramic views in three directions, but the climate in here is precisely, perfectly controlled.

At the forward end of the main deck, your full-beam master suite awaits. This exquisitely styled full-beam cabin is a tranquil haven for private relaxation with a comfy sofa, a study desk, his-and-hers bathrooms, a ceiling TV above the king-size bed and huge windows on both sides to bring the seascape into your bedroom until you push the button to shut the blinds at the end of each perfect day.

Key features

Exhilarating 25 knot performance - at least twice as fast as the average charter yacht

Stunning modern interiors by Alberto Mancini

Floor-to-ceiling windows

Full beam master cabin

Jacuzzi dip pool on foredeck

Beach club with hydraulic stairs

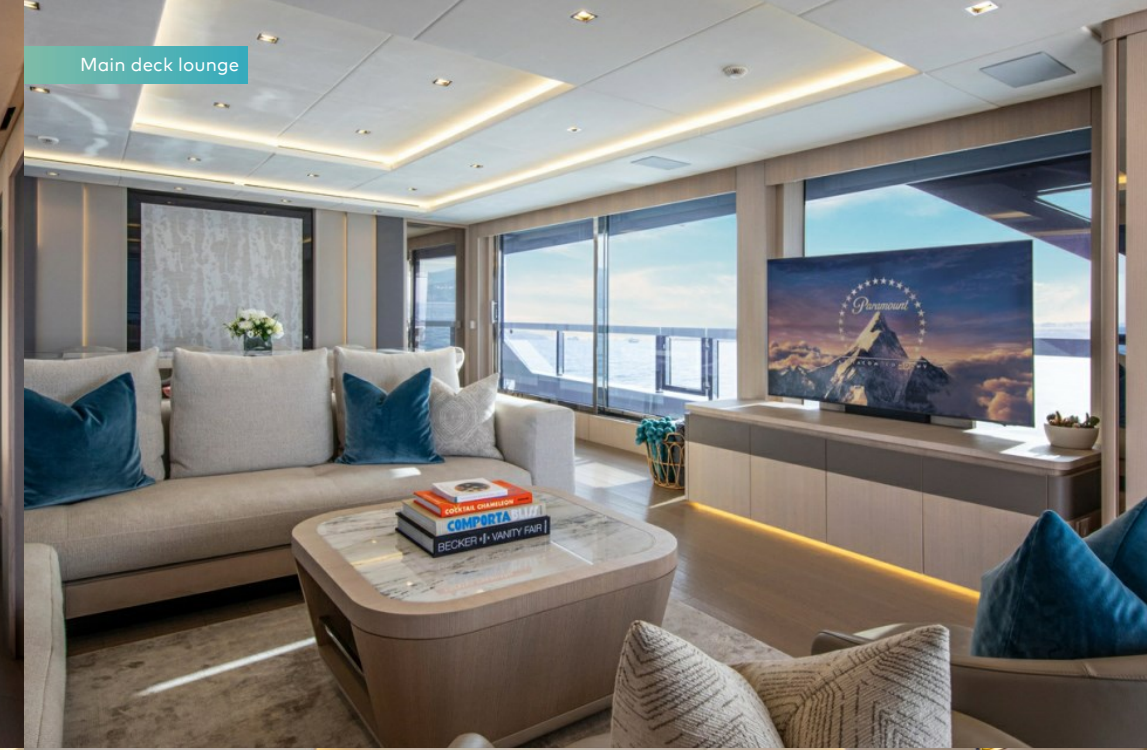
Zero speed stabilisers to reduce any rolling motion while at anchor

C2

Main deck lounge



Main deck lounge



Main deck lounge



Main deck dining



C2

Master suite



Master suite



Master suite study area



Master shower room en suite



C2

Double cabin



Double cabin shower room en suite



Convertible cabin



Convertible cabin



C2

Details



Details



Details



Main deck aft



C2

Foredeck seating



Foredeck jacuzzi



Foredeck seating



Foredeck jacuzzi



C2

Details



Sun deck



Sun deck dining



Sun deck seating



C2

Sun deck bar



Sun deck lounging



Beach club with hydraulic stairs



Watersports



C2

Watersports



Watersports



At anchor



Cruising



BURGESS

Discover the difference.
burgessyachts.com



C2

SPECIFICATION.



Length
33.3m (109.2ft)



Built
2022, Overmarine, Italy



Interior designer
Overmarine



Beam
7.4m (24.3ft)



Draft
1.9m (6.2ft)



Gross tonnage
228



Cruising speed
21 knots



Maximum speed
25 knots



Fuel consumption at cruising speed
550 litres per hour



Engines
4 x 1,000hp Volvo Penta



Guests
10



No. of guest cabins
5 (3 x double, 2 x double/twin)



Crew
6

Note

Fully licensed for charters in Spanish waters.

[View yacht on website](#)

[Watch yacht video](#)



EQUIPMENT.

Tenders & toys



1 x Tender



1 x Deck jacuzzi



Anti-jellyfish pool



Trampoline



1 x Waverunner



2 x SeaBobs



2 x Flyboards



2 x Stand up paddleboards



Wakeboard



Waterskis



Snorkelling gear

5m Williams jet tender with 110hp engine | 1 x Sea-Doo Spark waverunner | 2 x Fliteboards | 2 x SeaBobs | 2 x inflatable stand up paddleboards | 1 x inflatable pool | 1 x slip and slide | 3 x inflatable tubes | Towables | Waterskis | Wakeboard | 12 x snorkelling sets

Fitness & wellness



Free weights



Resistance bands



Training bench



Yoga mats

Technogym bench | Dumbbells from 2-10kgs | Yoga equipment | Resistance bands

Communication & entertainment

Comprehensive audio-visual systems SeaLux user Interface using iPads throughout the vessel. Main deck: 65" Samsung TV - Netflix, Apple TV, IPTV any other available apps. - Home Cinema Sound System Sun deck: 50 inch Samsung TV – Netflix, Apple TV, IPTV any other available apps. - Home Cinema Sound System Master suite: 50 inch Samsung TV – Netflix, Apple TV, IPTV any other available apps. - Home Cinema Sound System Double cabins: 50 inch Samsung TV – Netflix, Apple TV, IPTV any other available apps. Twin cabins: 32" Samsung TV - Netflix, Apple TV, IPTV any other available apps. Sound Systems fitted throughout the Vessel, Superior FOCAL SoundSystem has been fitted by the owner., Satcom & cellular communications facilities Connectivity: Wavehunter & Starlink

BURGESS

WORLD CLASS. WORLD WIDE.

London +44 20 7766 4300	Monaco +377 97 97 81 21	New York +1 212 223 0410	Miami +1 305 672 0150	Singapore +65 9665 8990	Beverly Hills +1 310 424 5112	Palma +34 971 495 413	Athens +30 210 967 1661
Dubai +971 4 425 5874	Phuket +66 7623 9739	Hong Kong +852 6496 2094	Tokyo +81 46 738 8612	Sydney +61 499 945 557	Mumbai +91 98211 67253	Shanghai +86 187 0898 6800	Rio de Janeiro +55 21 2553-3238

Advertising of these vessel(s) in printed publications, on the internet or in any other medium is not permitted without prior written permission from Burgess. All particulars are given in good faith and are believed correct but they cannot be guaranteed.

Last updated: 03 May 2024