

# BURKUT

---



BURKUT

# SPECIFICATION.



Asking price  
**EUR 18,750,000**



Built  
**2009 (refitted 2012), Baglietto, Italy**



Length  
**54m (177.1ft)**



Beam  
**10.2m (33.5ft)**



Draft  
**3.2m (10.5ft)**



Gross tonnage  
**733**



Cruising speed  
**12 knots**



Maximum speed  
**15 knots**



Range  
**4,500 nm**



Flag  
**Cayman Islands**



Lying  
**Middle East**



Class  
**Lloyd's**



Exterior designer  
**Francesco Paszkowski Design**



Interior designer  
**Francesco Paszkowski Design**



Construction  
**Hull - Steel, Superstructure - Aluminium, Deck - Teak**



Crew  
**11**



Guests  
**10**



Cabins  
**5 (3 × double, 1 × double/twin, 1 × twin)**



Engines  
**2 × 2,000hp Caterpillar**



Propulsion  
**Twin screw diesel yacht**

## Note

Not available for sale to US residents while in US waters.

[View yacht on website](#)





BURKUT

Main deck lounge



Main deck lounge



Main deck dining area



Main deck master cabin



BURGESS

Discover the difference.  
burgessyachts.com





## BURKUT

### Master cabin



### Master bathroom en suite



### Master study



### Guest double cabin





BURKUT

Guest double cabin



Guest en suite bathroom



Guest double cabin



Lower deck twin cabin



BURGESS

Discover the difference.  
burgessyachts.com





BURKUT

Sky lounge



Sky lounge



Gym



Spa





BURKUT

Sun deck aft



Bridge deck aft dining



Main deck aft



Foredeck





BURKUT

Cruising



Cruising



BURGESS

Discover the difference.  
[burgessyachts.com](http://burgessyachts.com)





# OVERVIEW.

BURKUT is a 54m (177.7ft) motor yacht delivered in 2009 by the well know Italian shipyard, Baglietto. Her sleek interior and exterior designs are from the works of Francesco Paszkowski Design. Launched as the fourth yacht of Baglietto's Steel Hull Full Displacement Series, BURKUT is Lloyd's classed and MCA compliant.

BURKUT can comfortably accommodate 10 guests in five spacious cabins. Her full beam master cabin is located on the main deck and features a private study, a private lounge with separate day head, port and starboard sea balconies, and a walk through en suite bathroom. Four additional guest cabins can be found on the lower deck consisting of three double cabins and a twin cabin, all with en suite bathrooms.

Spacious exterior decks provide multiple options for entertainment and relaxation for all. Of highlight is the versatile sun deck which features a fitness and wellness center forward, with a jacuzzi and sun loungers aft. A large al fresco dining and entertaining area can be found on the bridge deck aft, while additional exterior lounging is located on the main deck aft.

Powered by twin 2,000hp Caterpillar engines, BURKUT features a cruising speed of 12 knots and a maximum speed of 15 knots, with a transatlantic range of 4,500 nautical miles. Zero speed stabilizers ensure a stable and comfortable cruising experience on board BURKUT.

## Key features

Accommodation for 10 guests in five spacious cabins

Full beam master cabin with private study, private lounge, port and starboard sea balconies, and an en suite bathroom

Fully equipped gym on the sundeck

Wellness center with a massage room, beauty salon, and steam room

Tender garage with stern access

Elevator

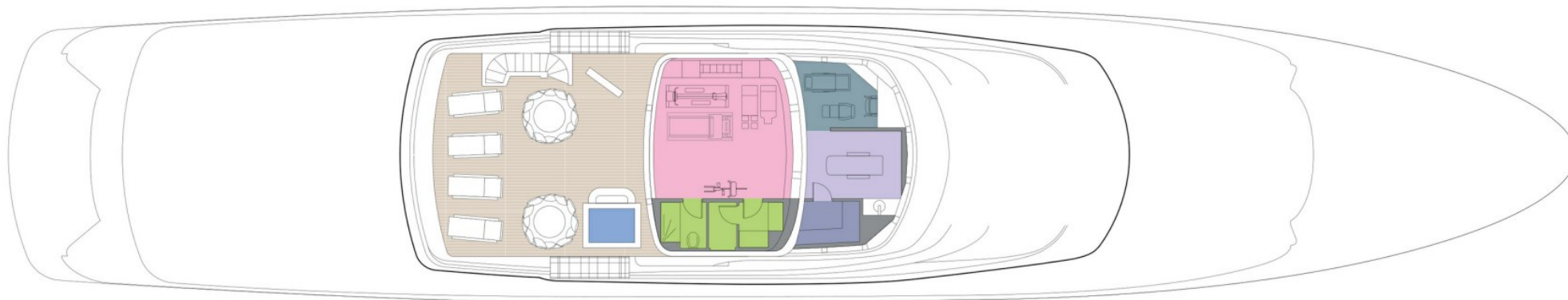
Lloyds classed and MCA compliant

## Tenders

RIB Tender – 6.5m BSC66 (10 passengers)



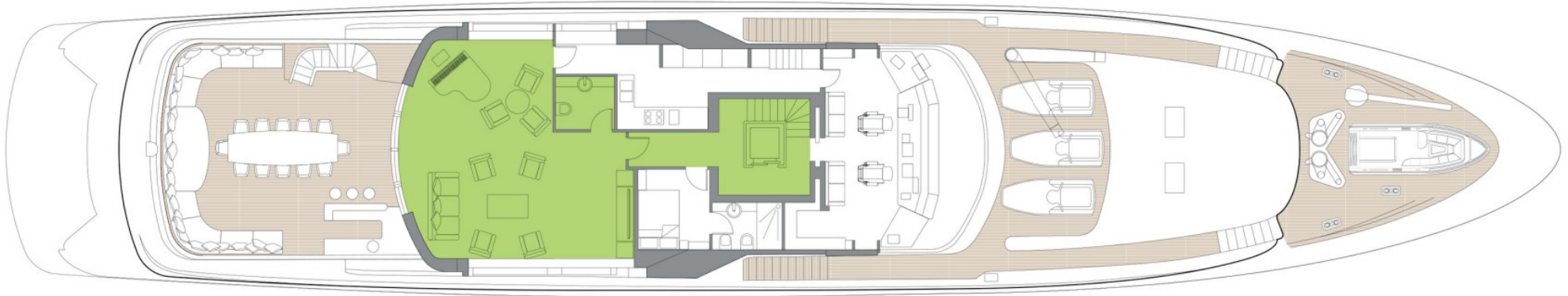
# SUN DECK



 GUEST AREAS  OWNER'S SUITE  VIP SUITE  GUEST CABINS  OWNER'S OFFICE  GYM  MASSAGE SUITE  BEAUTY SALON  SPA  JACUZZI



# UPPER DECK



 GUEST AREAS  OWNER'S SUITE  VIP SUITE  GUEST CABINS  OWNER'S OFFICE  GYM  MASSAGE SUITE  BEAUTY SALON  SPA  JACUZZI



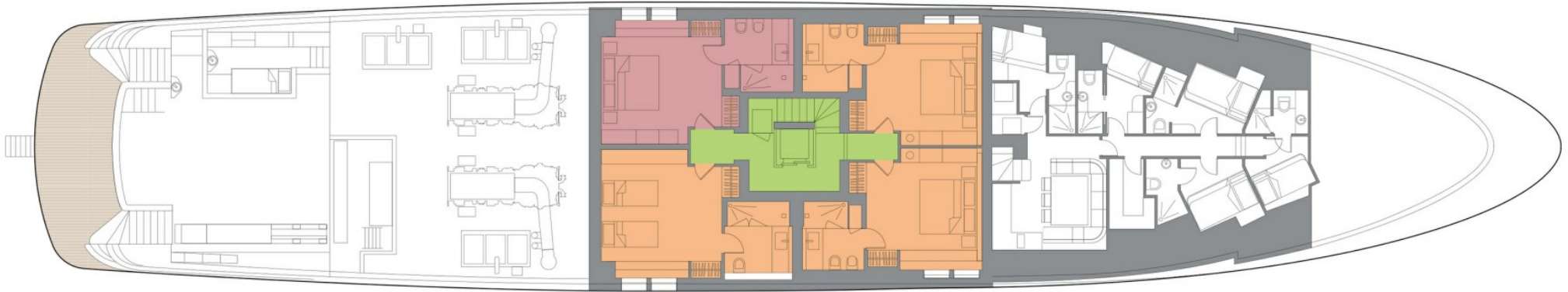
# MAIN DECK



■ GUEST AREAS ■ OWNER'S SUITE ■ VIP SUITE ■ GUEST CABINS ■ OWNER'S OFFICE ■ GYM ■ MASSAGE SUITE ■ BEAUTY SALON ■ SPA ■ JACUZZI



# LOWER DECK



■ GUEST AREAS ■ OWNER'S SUITE ■ VIP SUITE ■ GUEST CABINS ■ OWNER'S OFFICE ■ GYM ■ MASSAGE SUITE ■ BEAUTY SALON ■ SPA ■ JACUZZI



# BURGESS

# WORLD CLASS. WORLD WIDE.

|                            |                            |                             |                             |                            |                                  |                           |                            |
|----------------------------|----------------------------|-----------------------------|-----------------------------|----------------------------|----------------------------------|---------------------------|----------------------------|
| London<br>+44 20 7766 4300 | Monaco<br>+377 97 97 81 21 | New York<br>+1 212 223 0410 | Miami<br>+1 305 672 0150    | Singapore<br>+65 9665 8990 | Beverly Hills<br>+1 310 424 5112 | Palma<br>+34 971 495 413  | Athens<br>+30 210 967 1661 |
|                            | Dubai<br>+971 4 425 5874   | Phuket<br>+66 7623 9739     | Hong Kong<br>+852 6496 2094 | Tokyo<br>+81 46 738 8612   | Sydney<br>+61 499 945 557        | Mumbai<br>+91 98211 67253 |                            |

---

Advertising of these vessel(s) in printed publications, on the internet or in any other medium is not permitted without prior written permission from Burgess. All particulars are given in good faith and are believed correct but they cannot be guaranteed.

Last updated: 29 February 2024