

BURKUT



BURKUT

SPECIFICATION.



Asking price
EUR 18,750,000



Built
2009 (refitted 2012), Baglietto, Italy



Length
54m (177.1ft)



Beam
10.2m (33.5ft)



Draft
3.2m (10.5ft)



Gross tonnage
733



Cruising speed
12 knots



Maximum speed
15 knots



Range
4,500 nm



Flag
Cayman Islands



Lying
Middle East



Class
Lloyd's



Exterior designer
Francesco Paszkowski Design



Interior designer
Francesco Paszkowski Design



Construction
Hull - Steel, Superstructure - Aluminium, Deck - Teak



Crew
11



Guests
10



Cabins
5 (3 x double, 1 x double/twin, 1 x twin)



Engines
2 x 2,000hp Caterpillar



Propulsion
Twin screw diesel yacht

Note

Not available for sale to US residents while in US waters.

[View yacht on website](#)



BURKUT

Main deck lounge



Main deck lounge



Main deck dining area



Main deck master cabin



BURKUT

Master cabin



Master bathroom en suite



Master study



Guest double cabin



BURKUT

Guest double cabin



Guest en suite bathroom



Guest double cabin



Lower deck twin cabin



BURKUT

Sky lounge



Sky lounge



Gym



Spa



BURKUT

Sun deck aft



Bridge deck aft dining



Main deck aft



Foredeck



BURKUT

Cruising



Cruising



BURGESS

Discover the difference.
burgessyachts.com



BURKUT

OVERVIEW.

BURKUT is a 54m (177.7ft) motor yacht delivered in 2009 by the well know Italian shipyard, Baglietto. Her sleek interior and exterior designs are from the works of Francesco Paszkowski Design. Launched as the fourth yacht of Baglietto's Steel Hull Full Displacement Series, BURKUT is Lloyd's classed and MCA compliant.

BURKUT can comfortably accommodate 10 guests in five spacious cabins. Her full beam master cabin is located on the main deck and features a private study, a private lounge with separate day head, port and starboard sea balconies, and a walk through en suite bathroom. Four additional guest cabins can be found on the lower deck consisting of three double cabins and a twin cabin, all with en suite bathrooms.

Spacious exterior decks provide multiple options for entertainment and relaxation for all. Of highlight is the versatile sun deck which features a fitness and wellness center forward, with a jacuzzi and sun loungers aft. A large al fresco dining and entertaining area can be found on the bridge deck aft, while additional exterior lounging is located on the main deck aft.

Powered by twin 2,000hp Caterpillar engines, BURKUT features a cruising speed of 12 knots and a maximum speed of 15 knots, with a transatlantic range of 4,500 nautical miles. Zero speed stabilizers ensure a stable and comfortable cruising experience on board BURKUT.

Key features

Accommodation for 10 guests in five spacious cabins

Full beam master cabin with private study, private lounge, port and starboard sea balconies, and an en suite bathroom

Fully equipped gym on the sundeck

Wellness center with a massage room, beauty salon, and steam room

Tender garage with stern access

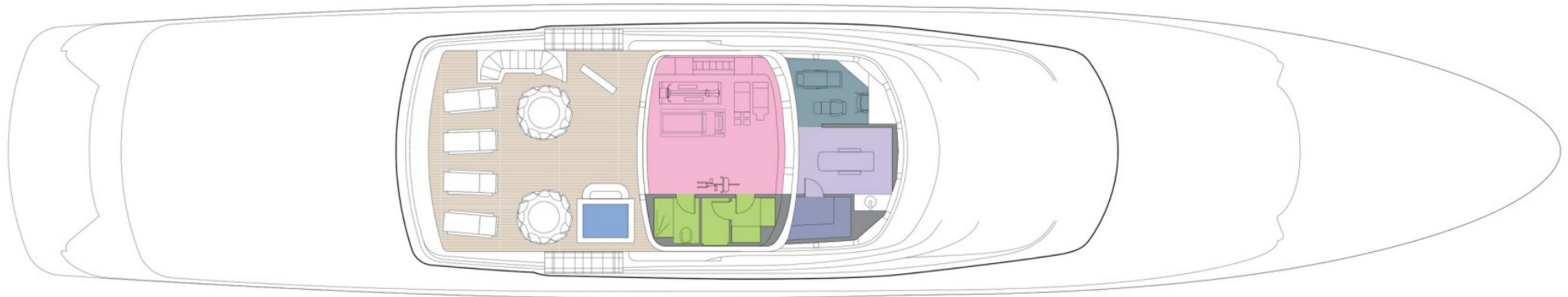
Elevator

Lloyds classed and MCA compliant

Tenders

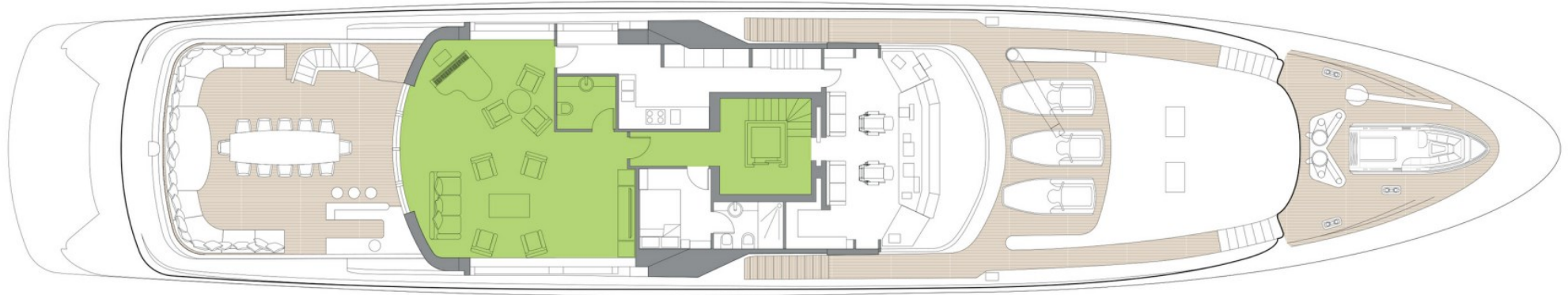
RIB Tender – 6.5m BSC66 (10 passengers)

SUN DECK



- GUEST AREAS
- OWNER'S SUITE
- VIP SUITE
- GUEST CABINS
- OWNER'S OFFICE
- GYM
- MASSAGE SUITE
- BEAUTY SALON
- SPA
- JACUZZI

UPPER DECK



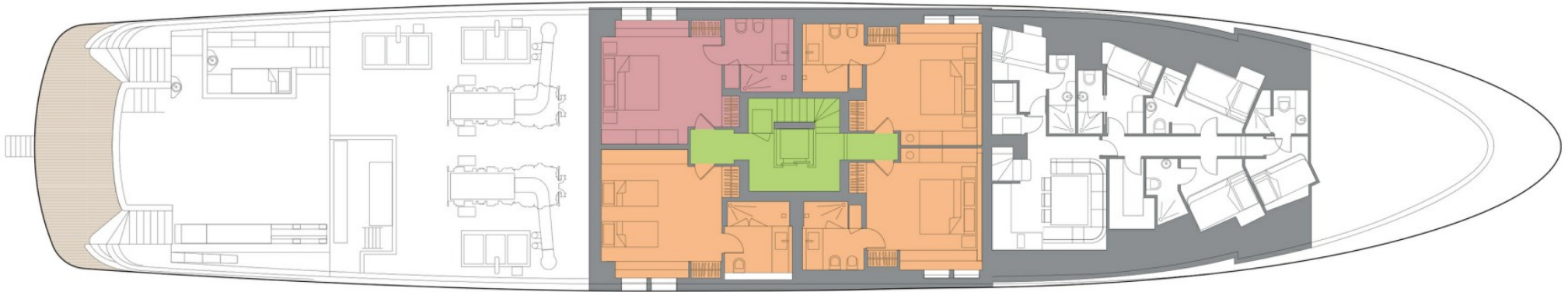
- GUEST AREAS
- OWNER'S SUITE
- VIP SUITE
- GUEST CABINS
- OWNER'S OFFICE
- GYM
- MASSAGE SUITE
- BEAUTY SALON
- SPA
- JACUZZI

MAIN DECK



- GUEST AREAS
- OWNER'S SUITE
- VIP SUITE
- GUEST CABINS
- OWNER'S OFFICE
- GYM
- MASSAGE SUITE
- BEAUTY SALON
- SPA
- JACUZZI

LOWER DECK



- GUEST AREAS
- OWNER'S SUITE
- VIP SUITE
- GUEST CABINS
- OWNER'S OFFICE
- GYM
- MASSAGE SUITE
- BEAUTY SALON
- SPA
- JACUZZI

BURGESS

WORLD CLASS. WORLD WIDE.

| | | | | | | | |
|----------------------------|----------------------------|-----------------------------|--------------------------|----------------------------|----------------------------------|----------------------------------|------------------------------------|
| London +44 20 7766 4300 | Monaco +377 97 97 81 21 | New York +1 212 223 0410 | Miami +1 305 672 0150 | Singapore +65 9665 8990 | Beverly Hills +1 310 424 5112 | Palma +34 971 495 413 | Athens +30 210 967 1661 |
| Dubai +971 4 425 5874 | Phuket +66 7623 9739 | Hong Kong +852 6496 2094 | Tokyo +81 46 738 8612 | Sydney +61 499 945 557 | Mumbai +91 98211 67253 | Shanghai +86 187 0898 6800 | Rio de Janeiro +55 21 2553-3238 |

Advertising of these vessel(s) in printed publications, on the internet or in any other medium is not permitted without prior written permission from Burgess. All particulars are given in good faith and are believed correct but they cannot be guaranteed.

Last updated: 03 May 2024