

BORKUMRIFF IV

BORKUMRIEF IV

SPÉCIFICATIONS.



Prix demandé
EUR 10 900 000 (EU VAT paid)



Chantier
2002, Royal Huisman Shipyard, The Netherlands



Longueur
50,6m



Largeur
9,2m



Tirant d'eau min / max
-/4,3m



Déplacement
299 tonnes



Vitesse de croisière
10 knots



Vitesse maximale
12,5 knots



Autonomie
3 200 nm



Pavillon
Cayman Islands



Position
West Mediterranean



Classe
Built to Lloyd's hull compliance



Designer extérieur
John Alden



Designer d'intérieur
John Munford



Construction
Hull - Aluminium, Superstructure - Aluminium,
Deck - Teak



Équipage
9



Invités
6



Cabines
3 (3 x twin)



Moteurs
1 x 1 057hp MTU

Note

Not available for sale to US residents while in US waters.

[Voir le yacht sur le site](#)

[Regarder la vidéo du yacht](#)



BORKUMRIFF IV



BURGESS

Discover the difference.
burgessyachts.com







BORKUMRIFF IV



BURGESS

Discover the difference.
burgessyachts.com



BORKUMRIFF IV



BURGESS

Discover the difference.
burgessyachts.com



BORKUMRIFF IV

APERÇU.

The 50.6m (166ft) BORKUMRIFF IV is an auxiliary sailing schooner delivered by Dutch sailing superyacht specialists Royal Huisman in 2002. This much loved family yacht, still under her original ownership, has been unstintingly maintained and continually upgraded by professionals. Today she presents in outstanding condition.

The sweeping sheerline of her sleek, Lloyd's compliant aluminium hull and traditional deck design are by the American yacht designer John G Alden, famed for his fast, sea-kindly and graceful designs, with performance optimisation and naval architecture by Gerald Dijkstra. British designer John Munford styled her classic interior with exquisite mahogany panelling to evoke the golden age of gentleman's yachting.

She has been fitted out without compromise with internal ballast of stacked and poured lead in her long keel, masts, carbon fibre V-booms, furlers, powered winches and deck gear by Rondal, new rod rigging by Nitronic in 2019, navigational electronics by Furuno and a wardrobe of sails by big name lofts such as Incidences, North and Doyle.

Her 9.2m (30.2ft) beam and 254GT volume give her huge swathes of versatile teak deck space, the midships sidedeck sections of which are home to her beautiful 5.5m Walstad Baadewerff motor launch and 4.3m Novurania Deluxe tender. The focus of the guest spaces is the cockpit aft of the main deck house and forward of the helm, with U shaped seating port and starboard for open air dining and relaxing. The aft deck house with entry fore and aft provides lounge seating and the main deck house has a dining table to starboard, seating and a desk.

Steps from the main deck house lead down to a dayhead and on to the main saloon with formal dining to port and a lounge and entertainment area to starboard. She welcomes up to six guests in three cabins. The full beam owner's suite aft has twin berths, en suite and a lounge area and forward are two twin berths, both en suite and mirrors of each other in layout.

In common with all Alden designs, her sail plan is easily managed by a shorthanded crew but she can also pick up her skirts and fly at speeds into the high teens with a full crew in a regatta. When becalmed her 1,057hp MTU diesel engine gives her a top speed of 12.5 knots and a range of 3,200nm at her cruising speed of 10 knots.

Principales caractéristiques

Expertly built by Royal Huisman and designed by Alden and Dijkstra

Unsurpassed condition resulting from an impressive record of dedicated maintenance and gentle usage

Cosy interior designed by John Munford complete with softly toned mood lighting and polished panels of fine-grained mahogany and Burmese teak

Pedigree sailing yacht engineered for a globetrotting lifestyle

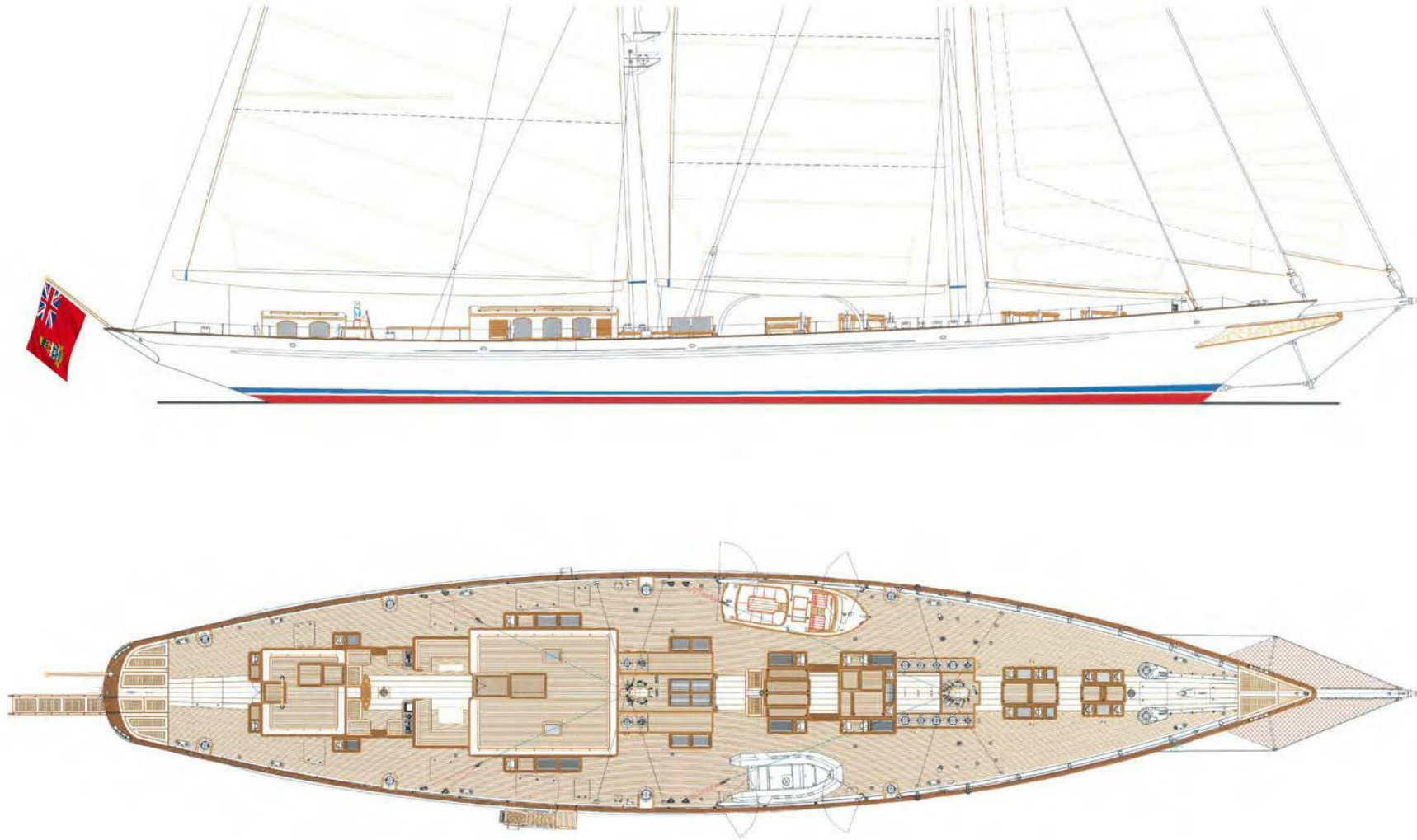
New Nitronic rod rigging by Ocean Yacht Systems in 2019

Annexes

1 x Novurania 4.3m Deluxe with Yamaha 60hp four stroke outboard, 1 x Pilot Motor Launch 5.5m Walstad Baadewerff tender (2002) with Yanmar 27hp

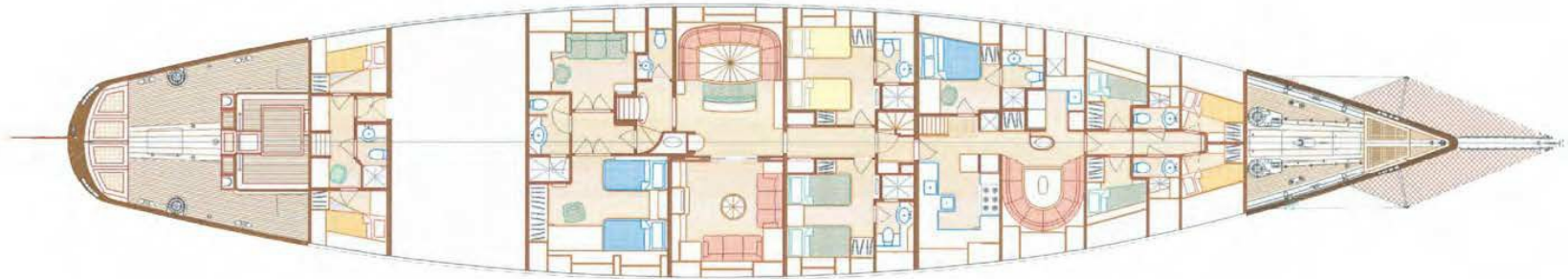
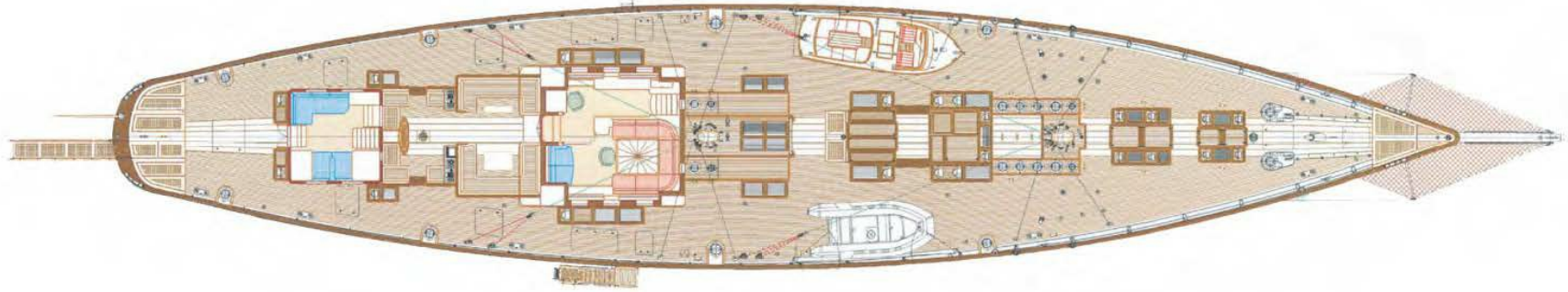
BORKUMRIFF IV

Deck plan



BORKUMRIFF IV

Deck plan



BURGESS

WORLD CLASS. WORLD WIDE.

London +44 20 7766 4300	Monaco +377 97 97 81 21	New York +1 212 223 0410	Miami +1 305 672 0150	Singapore +65 9665 8990	Beverly Hills +1 310 424 5112	Palma +34 971 495 413	Athens +30 210 967 1661
	Dubai +971 4 425 5874	Phuket +66 7623 9739	Hong Kong +852 6496 2094	Tokyo +81 46 738 8612	Sydney +61 499 945 557	Mumbai +91 98211 67253	

La publicité de ce(s) navire(s) dans des publications imprimées, sur Internet ou sur tout autre support n'est pas autorisée sans l'autorisation écrite préalable de Burgess.
Toutes les informations sont données de bonne foi et sont considérées comme exactes, mais elles ne peuvent être garanties.

Dernière mise à jour : 01 mars 2024