

BOOK ENDS



BOOK ENDS

SPECIFICATION.



Asking price
EUR 42,000,000



Built
2022, Heesen, The Netherlands



Length
50m (164ft)



Beam
9m (29.5ft)



Draft
2.2m (7.2ft)



Gross tonnage
497



Cruising speed
20 knots



Maximum speed
23 knots



Range
4,200 nm



Flag
Cayman Islands



Lying
USA



Class
ABS, A1 Commercial Yachting Service, AMS
Large Commercial Yacht Code LY3



Exterior designer
Omega Architects



Interior designer
Cristiano Gatto Design



Construction
Hull - Aluminium, Superstructure - Aluminium,
Deck - Teak



Crew
9



Guests
12



Cabins
5 (3 x double, 2 x twin, 2 x additional berths)



Engines
2 x 3,433hp MTU



Propulsion
Twin screw diesel yacht

Note

Not available for sale to US residents while in US waters.

[View yacht on website](#)

[Watch yacht video](#)



BOOK ENDS

Main deck lounge entrance



Main deck lounge



Main deck lounge



Main deck lounge



BOOK ENDS

Main deck dining area



Main deck dining area



Main deck guest foyer



Master study



BOOK ENDS

Master cabin



Master cabin



Master cabin en suite bathroom



Master cabin en suite bathroom



BOOK ENDS

Guest cabin



Guest cabin en suite bathroom



Guest cabin



Sky lounge



BOOK ENDS

Sky lounge



Bridge



Sun deck



Sun deck



BOOK ENDS

Sun deck



Bridge deck aft



Bridge deck aft



Main deck aft



BOOK ENDS

Main deck aft



Beach club gym



Engine room



Galley



BOOK ENDS

Cruising



Cruising



Cruising



Cruising



BURGESS

Discover the difference.
burgessyachts.com



OVERVIEW.

BOOK ENDS is a 50m (164ft) powerful trideck motor yacht with a semi-displacement hull form capable of 23 knots. Delivered in July 2022 by Dutch shipyard Heesen, she is an aluminium yacht built to ABS classification with a notably shallow draught of less than 2.2m (7.2ft) to allow more extensive cruising.

The exterior design by Omega Architects brings up-to-date the Heesen-hallmark reverse sheer and streamlined silhouette to create a dynamic, contemporary profile, complimented by a white matterhorn paint with accents of pure silver. The sun deck has lounge seating forward, jacuzzi and sunpads aft, bar and dining area amidships under a hardtop. The upper deck has full walkaround decks, a large half-shaded aft deck and ample guest space with seating on the foredeck. The main deck aft has a huge expanse of sunpads.

BOOK ENDS has 497GT of internal volume across three decks with clean, contemporary interiors by Cristiano Gatto and eye-catching artworks by acclaimed modern artists. The yacht is configured to host up to 12 guests in five cabins with separate accommodation for up to nine crew. Interior highlights include an innovative saloon design with curved bulkheads separating the lounge and dining areas; a full beam owner's suite forward on the main deck with marble bathroom, separate study and enormous walk-in wardrobe; sociable semi-circular seating arrangements in the main saloon and sky lounge; and a main stairwell with strikingly stylish atriums on all three levels. The other four guest cabins – two doubles and two twins – are amidships on the lower deck.

Aft on the lower deck there is a flex-use beach club that can be configured as a gym for morning workouts at sea level, a lounge area during the day or an entertainment space by night.

BOOK ENDS is powered by two MTU 16V4000M65L 'green oceanic' engines, fitted with selective catalytic reduction (SCR) units to reduce NOx emissions, and under Tier 3 compliance. With almost 7,000hp on tap, her top speed is around 23 knots, with a maximum range at 11 knots of 4,200nm. Naiad 720 zero speed fin stabilisers are fitted.

Key features

As-new yacht delivered in 2022, currently under warranty

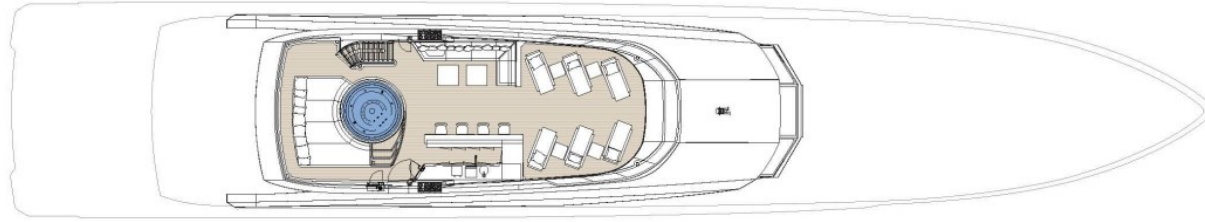
Contemporary interiors by Cristiano Gatto with eye-catching artwork throughout

Sleek exterior design by Omega Architects with a reverse sheer and streamlined silhouette

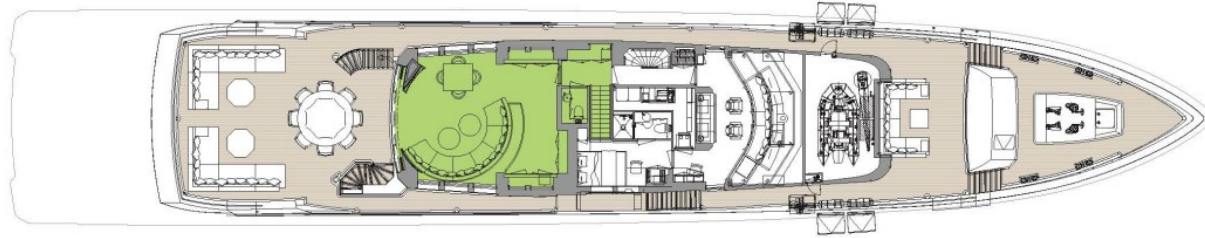
Twin MTU 'green oceanic' engines with Tier 3 compliance

Nearly 7,000hp allowing for maximum speeds of 23 knots

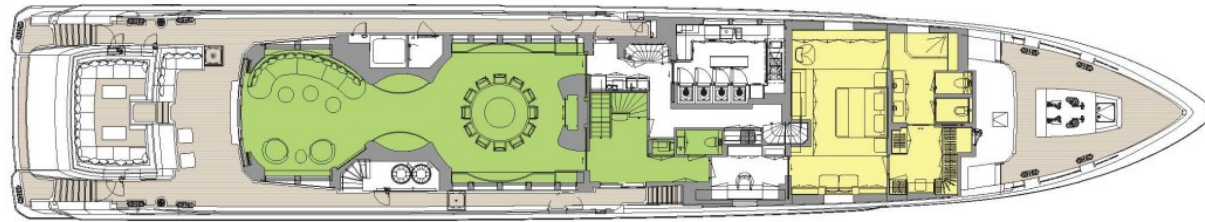
Versatile beach club that can be used for a gym or lounge area



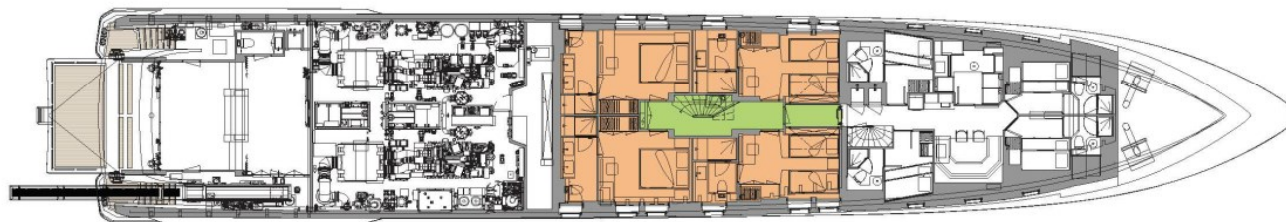
SUN DECK



WHEELHOUSE DECK



MAIN DECK



LOWER DECK

■ GUEST AREAS ■ MASTER SUITE ■ GUEST CABINS ■ JACUZZI

BURGESS

WORLD CLASS. WORLD WIDE.

London +44 20 7766 4300	Monaco +377 97 97 81 21	New York +1 212 223 0410	Miami +1 305 672 0150	Singapore +65 9665 8990	Beverly Hills +1 310 424 5112	Palma +34 971 495 413	Athens +30 210 967 1661
	Dubai +971 4 425 5874	Phuket +66 7623 9739	Hong Kong +852 6496 2094	Tokyo +81 46 738 8612	Sydney +61 499 945 557	Mumbai +91 98211 67253	

Advertising of these vessel(s) in printed publications, on the internet or in any other medium is not permitted without prior written permission from Burgess. All particulars are given in good faith and are believed correct but they cannot be guaranteed.

Last updated: 01 March 2024