

# BLISS

---





BLISS

# SPECIFICATION.



Asking price  
**EUR 14,750,000**



Built  
**2007 (refitted 2023), Heesen, The Netherlands**



Length  
**44.2m (144.9ft)**



Beam  
**9m (29.5ft)**



Draft  
**2.5m (8.2ft)**



Gross tonnage  
**458**



Cruising speed  
**16 knots**



Maximum speed  
**25 knots**



Range  
**3,200 nm**



Flag  
**Cayman Islands**



Lying  
**East Mediterranean**



Class  
**ABS, MCA**



Exterior designer  
**Omega Architects**



Interior designer  
**Omega Architects**



Construction  
**Hull - Aluminium, Superstructure - Aluminium,  
Deck - Teak**



Crew  
**10**



Guests  
**14**



Cabins  
**6 (4 × double, 2 × twin, 2 × additional berths)**



Engines  
**2 × 3,646hp MTU**



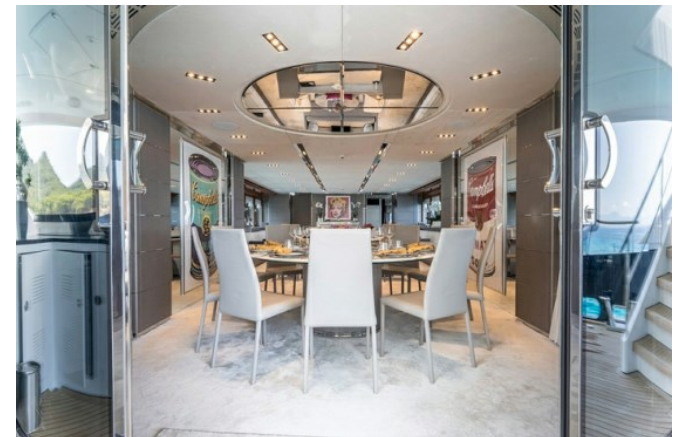
Propulsion  
**Twin screw diesel yacht**

## Note

Not available for sale to US residents while in US waters.

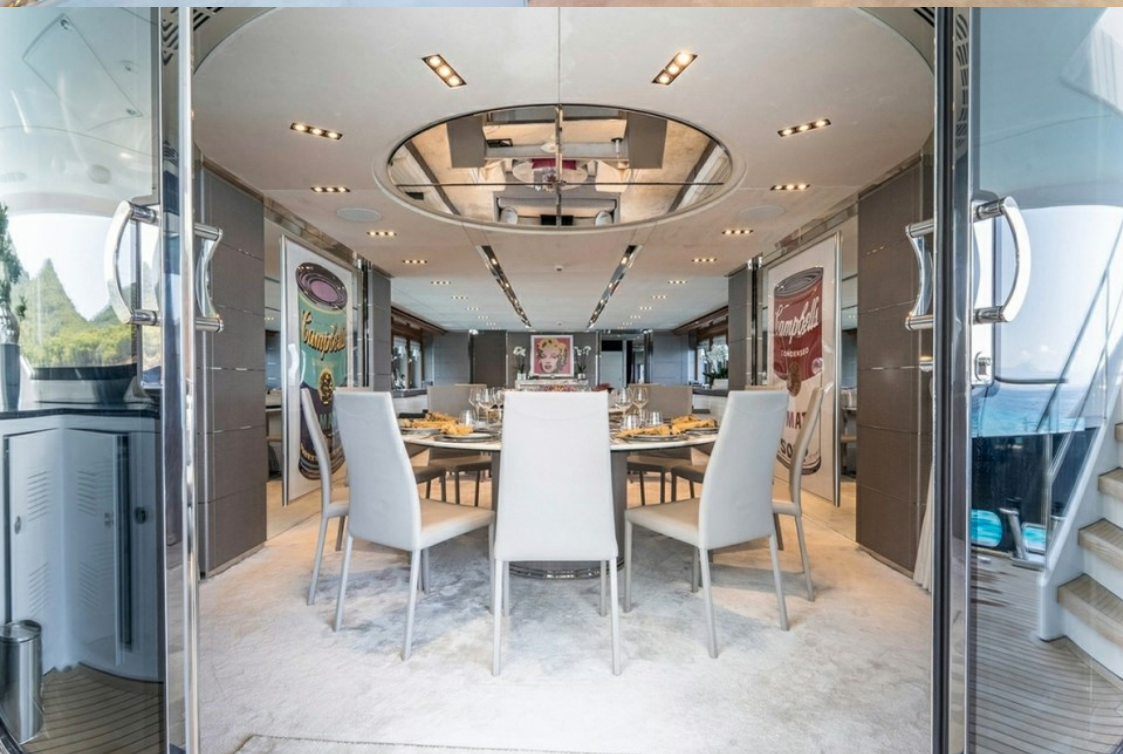
[View yacht on website](#)

[Watch yacht video](#)





BLISS



BURGESS

Discover the difference.  
[burgessyachts.com](http://burgessyachts.com)





BLISS



BURGESS

Discover the difference.  
[burgessyachts.com](http://burgessyachts.com)





BLISS



BURGESS

Discover the difference.  
[burgessyachts.com](http://burgessyachts.com)





BLISS



BURGESS

Discover the difference.  
[burgessyachts.com](http://burgessyachts.com)





BLISS



BURGESS

Discover the difference.  
[burgessyachts.com](http://burgessyachts.com)



BLISS

# OVERVIEW.

BLISS is a spectacular 44m Heesen motor yacht characterized by her striking black aluminum hull. A semi displacement, high performance yacht she is powered by twin MTU 16V 4000 M90 engines enabling her to reach speeds up to 25 knots. The yacht features contemporary and cool interiors designed by prestigious Icelandic designer Ingibjörg St. Palmadottir. She is maintained in mint condition and to the highest standards and represents the perfect combination of Dutch quality and class.

BLISS can accommodate 12/14 guests in five well-appointed cabins. Each cabin has its own unique design and style, ensuring guests can enjoy a welcoming and relaxing personal space to retreat to when on board. The upper salon can be converted to be used as an extra guest cabin with a Pullman king size bed. An elegant main salon forms the heart of the yacht; the large seating area and entertainment system is completed by a formal dining space, with circular table and leather seating, for enjoying sumptuous meals prepared by Bliss' talented chef. She can accommodate 10 crew members on board to ensure the best luxury experience.

## Key features

---

2 x MTU 16V 4000 M90

---

Accommodates 12 guests in 5 cabins

---

Upper Salon can be converted as extra guest cabin

---

Jacuzzi and Sauna onboard

---

Build under MCA Code

---

Striking aluminium Hull and a mat grey superstructure

---

Zero speed Stabilisers

---



# BURGESS

# WORLD CLASS. WORLD WIDE.

London +44 20 7766 4300	Monaco +377 97 97 81 21	New York +1 212 223 0410	Miami +1 305 672 0150	Singapore +65 9665 8990	Beverly Hills +1 310 424 5112	Palma +34 971 495 413	Athens +30 210 967 1661
	Dubai +971 4 425 5874	Phuket +66 7623 9739	Hong Kong +852 6496 2094	Tokyo +81 46 738 8612	Sydney +61 499 945 557	Mumbai +91 98211 67253	

Advertising of these vessel(s) in printed publications, on the internet or in any other medium is not permitted without prior written permission from Burgess. All particulars are given in good faith and are believed correct but they cannot be guaranteed.

Last updated: 01 March 2024