

# BIG FISH

---





BIG FISH

# APERÇU.

BIG FISH is for the adventurous charterer. This magnificent yacht is as at home in the Arctic as she is in the tropics. Wherever you cruise, you will find that BIG FISH is equipped to meet your needs: from her vast range of watertoys to a fully-equipped gym; from professional kitchen to sumptuous accommodation. Plus, a 1:1 crew to guest ratio ensures that your party of 10 will want for nothing.

Wake up in your master cabin on the upper deck and look out at the anchorage. Commanding elevated views, your suite and private terrace gives you the seclusion to truly unwind. The cabin décor is simple and elegant, complemented by huge windows on three sides - creating the perfect atmosphere for relaxation. Your guests are just as comfortable on the lower deck in four further cabins. Meet them for breakfast in the main saloon, which shows off stunning modern interior design, lit by full-height windows that open onto the side decks.

BIG FISH is an RYA watersports centre so you are in safe hands. Astern the swim platform extends on either side with fold-out wings, and reveals the beach club. You will find 10 sets of scuba gear and a dive compressor, plus a plethora of paddleboards, jetskis and towable inflatables.

The clue is in the name: BIG FISH is equipped for big game fishing. With Tiagra reels and the yacht's 7.8m (25.6ft) M & W tender (200nm range), you are set for the fishing experience of a lifetime.

For sun lovers, the sun deck has it all. The foredeck jacuzzi is surrounded by wide sun pads, plus there is a dining table, bar and BBQ for your al fresco lunch. Take a step up from here to the observation tower, and you'll feel like a sailor in the crows' nest.

No detail has been missed in her layout, even down to the open plan kitchen designed so that guests can sit at a bistro-style table and watch the master chef at work. It is no surprise that BIG FISH has won a raft of awards and recognition.

As the evening draws in you will find yourselves in the main saloon ready to savour the chef's menu. The sociable round dining table is backed by a 6.7m (22ft) video wall showing footage one of your guests took with BIG FISH's DJI Phantom drone. Drinks in hand you will recount your adventures and promise yourselves another action-packed day tomorrow.

## Principales caractéristiques

---

Multi award-winning yacht

---

Private master terrace

---

Fold-down balconies on both side on the main deck

---

A fully equipped gym

---

Crow's nest with 360° views

---

Jacuzzi on the sun deck

---

Zero speed stabilisers to reduce any rolling motion while at anchor

---

## BIG FISH

Aerial view



Observation lounge



Sun deck dining area



Sun deck dining area



BURGESS

Discover the difference.  
[burgessyachts.com](http://burgessyachts.com)





## BIG FISH

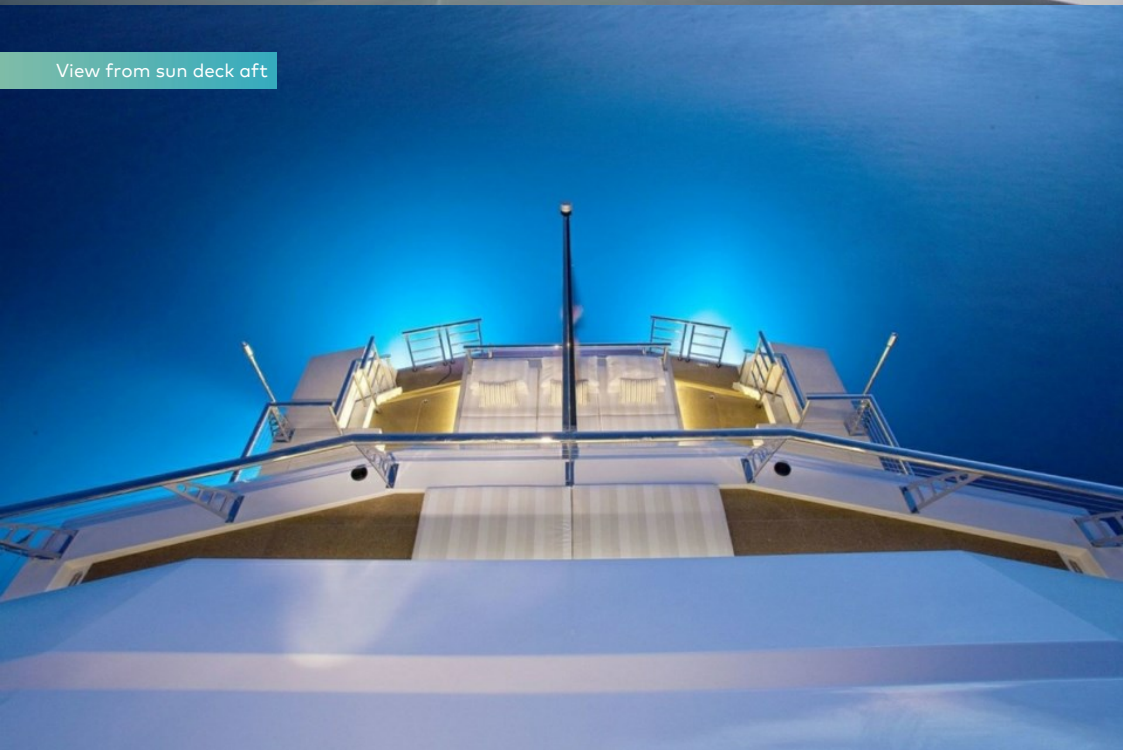
Sun deck dining area and jacuzzi



Sun deck jacuzzi



View from sun deck aft



Bridge deck aft





## BIG FISH

Bridge deck aft sunloungers



Bridge deck aft master cabin



Bridge deck aft master cabin



Bridge deck aft master cabin





BIG FISH

# SPÉCIFICATIONS.



Longueur  
**45m**



Chantier  
**2010, McMullen & Wing, New Zealand**



Designer d'intérieur  
**Gregory C. Marshall Ltd**



Largeur  
**9m**



Tirant d'eau  
**3m**



Tonnage brut  
**498**



Vitesse de croisière  
**10 knots**



Vitesse maximale  
**14 knots**



Consommation de carburant en vitesse de croisière  
**200 litres par heure**



Moteurs  
**2 x 1 050hp Caterpillar**



Invités  
**10**



Nb de cabines invités  
**5 (5 x double)**



Équipage  
**10**

[Voir le yacht sur le site](#)

[Regarder la vidéo du yacht](#)



BURGESS

Discover the difference.  
burgessyachts.com



## Annexes & jeux nautiques

---



2 × Tenders



1 × Deck jacuzzi



7 × Stand up paddleboards



Wakeboard



Snorkelling gear



Air drone



RYA training centre for jetskis  
& waverunners



Waterskis



2 × Stand up jetskis



Inflatable tows

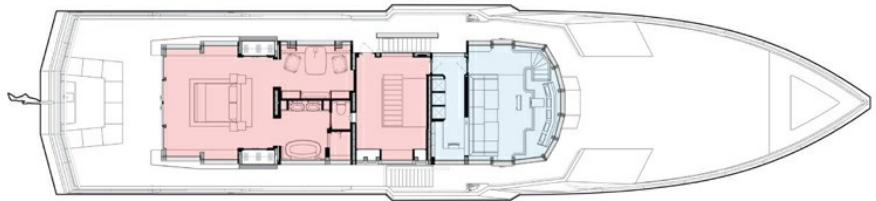


4 × Kayaks



Scuba diving equipment

BRIDGE DECK



KEY

OWNER / GUEST	
LOUNGE / DINING	
CREW / BRIDGE	
TECHNICAL	



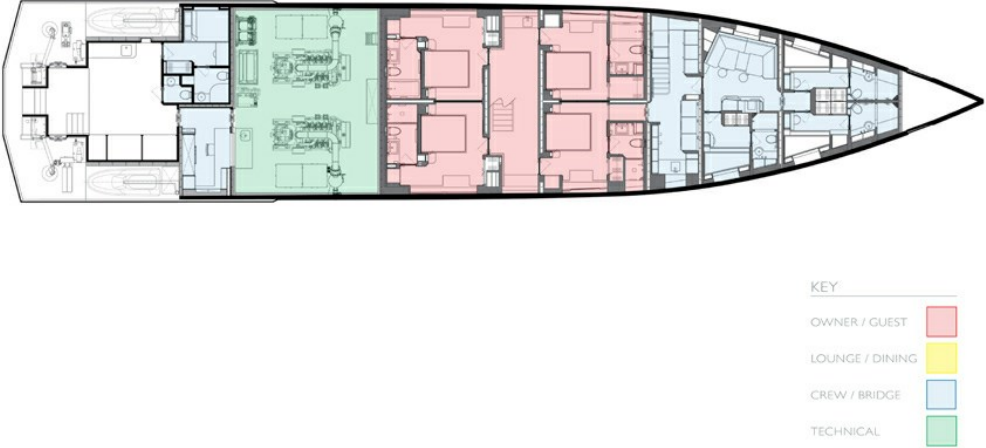
MAIN DECK



KEY

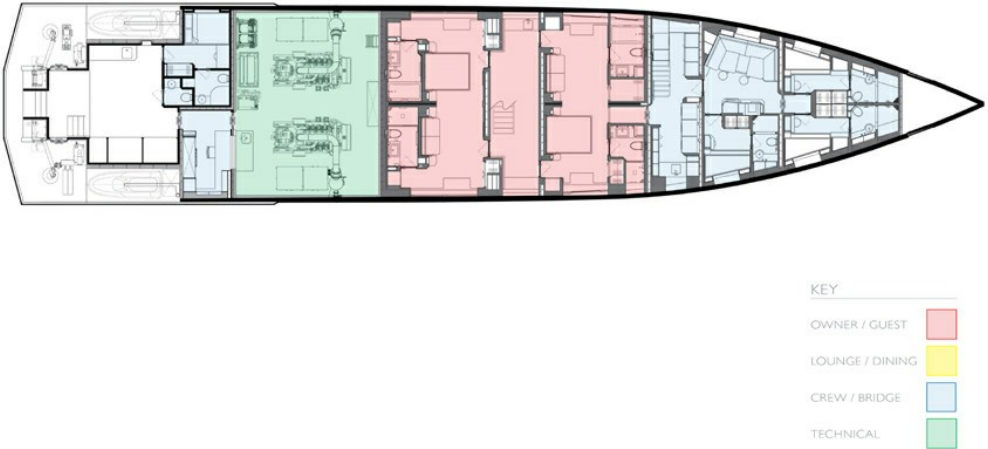
OWNER / GUEST	
LOUNGE / DINING	
CREW / BRIDGE	
TECHNICAL	

LOWER DECK (4 GUEST CABIN LAYOUT)





LOWER DECK (2 VIP CABIN LAYOUT)



# BURGESS

# WORLD CLASS. WORLD WIDE.

London +44 20 7766 4300	Monaco +377 97 97 81 21	New York +1 212 223 0410	Miami +1 305 672 0150	Singapore +65 9665 8990	Beverly Hills +1 310 424 5112	Palma +34 971 495 413	Athens +30 210 967 1661
Dubai +971 4 425 5874	Phuket +66 7623 9739	Hong Kong +852 6496 2094	Tokyo +81 46 738 8612	Sydney +61 499 945 557	Mumbai +91 98211 67253	Shanghai +86 187 0898 6800	Rio de Janeiro +55 21 2553-3238

---

La publicité de ce(s) navire(s) dans des publications imprimées, sur Internet ou sur tout autre support n'est pas autorisée sans l'autorisation écrite préalable de Burgess.  
Toutes les informations sont données de bonne foi et sont considérées comme exactes, mais elles ne peuvent être garanties.

Dernière mise à jour : 02 mai 2024