

BG



BG

SPECIFICATION.



Asking price
USD 11,999,999



Built
1990 (refitted 2015), Feadship, De Vries, The Netherlands



Length
46.9m (153.8ft)



Beam
8.8m (28.9ft)



Draft
2.9m (9.5ft)



Gross tonnage
515



Cruising speed
12 knots



Maximum speed
14.5 knots



Range
5,000 nm



Flag
Marshall Islands



Lying
USA



Class
Lloyd's Register (LR) 100 A1 SSC Yacht Mono G6 LMC



Exterior designer
De Voogt



Interior designer
Dee Dee Eustace



Construction
Hull - Steel, Superstructure - Aluminium, Deck - Teak



Crew
10



Guests
12



Cabins
6 (4 x double, 2 x double/twin)



Engines
2 x 905hp Caterpillar



Propulsion
Twin screw diesel yacht

Note

Not available for sale to US residents while in US waters.

[View yacht on website](#)



BG

Main deck lounge



Main deck lounge



Main deck dining area



Sky lounge



BG

Sky lounge



Master cabin



Master cabin



VIP cabin



BG

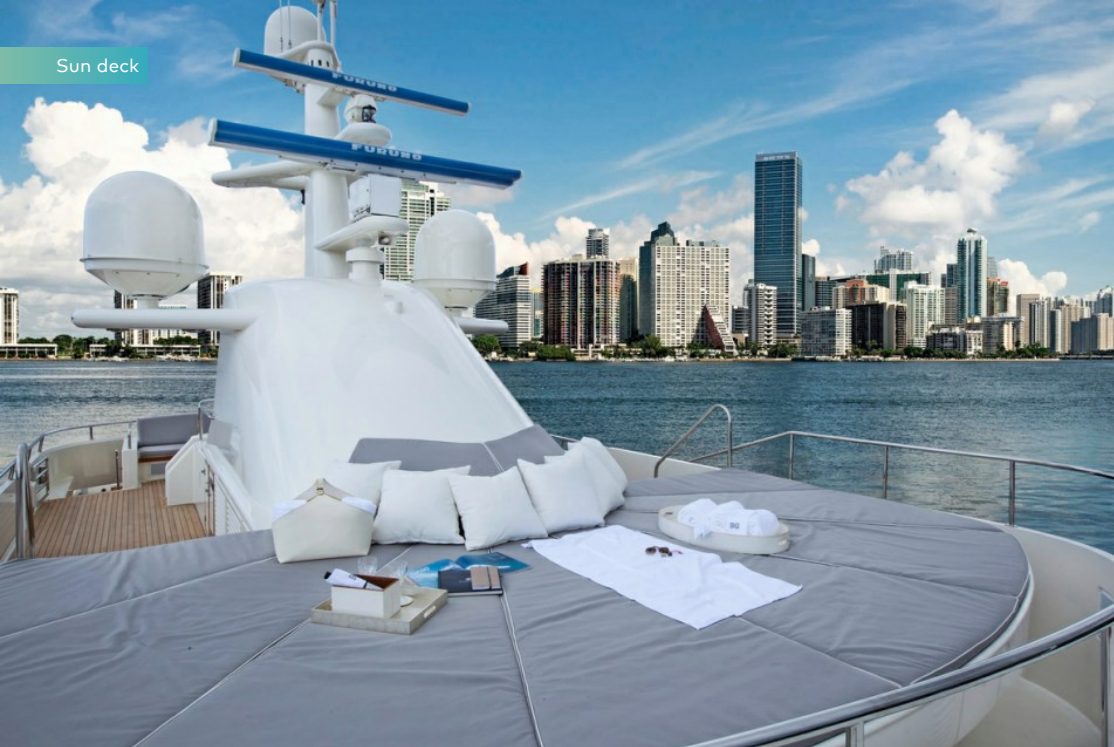
Guest cabin



Guest twin cabin



Sun deck



Bridge



BG

Bridge deck aft



At anchor



Cruising



BURGESS

Discover the difference.
burgessyachts.com



BG

OVERVIEW.

BG is a 47.7m (156.5ft) motor yacht delivered by the world renowned Feadship, De Vries in 1990. This Northern European pedigree yacht underwent a major refit in 2015 including a reconfiguration of the interior guest areas, raising of interior overheads, full repaint, all new teak, and much more.

The "Hampton Beach House" interior can accommodate 12 guests in six spacious cabins including a full beam master cabin and VIP cabin on the main deck with four further guest cabins on the lower deck, all with full en suite bathrooms. The spacious main deck lounge has comfortable seating with sensational views and adjoins a dining area with a rosewood table and a wine cellar containing 120 bottles. A bright sky lounge can be found on the bridge deck with 180 degree windows and provides an additional lounge and entertaining area.

BG's bridge deck aft boasts a phenomenal exterior dining and entertaining area with projector screen. A stylish jacuzzi area and large sun pad area provides panoramic views from the sun deck. With zero speed stabilisers ultimate comfort is ensured when at anchor or underway.

Powered by twin 905hp Caterpillar engines, BG has a cruising speed of 12 knots and a maximum speed of 15 knots. With a range of 5,000 nautical miles, BG has proven herself as a world cruiser from the Mediterranean to Tahiti, New Zealand, The Bahamas, Caribbean, Pacific and all points in between.

Owned and well maintained by multiple distinguished yachtsmen, BG features the classic Feadship exterior lines while displaying a bright and modern beach house interior.

Key features

Feadship De Vries pedigree, with classic exterior styling

Exquisite Hampton Beach House interior

Accommodation for 12 guests in 6 luxurious cabins

Spacious full beam master and VIP on main deck

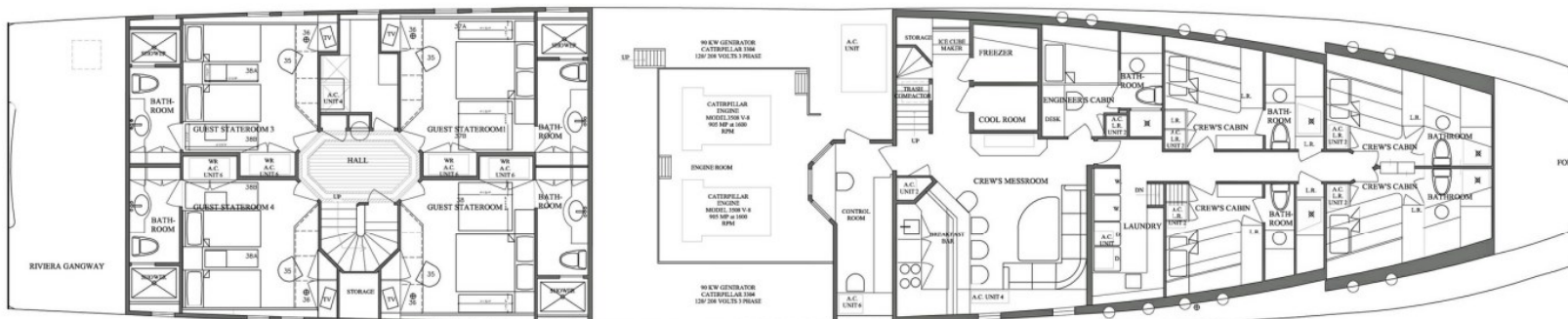
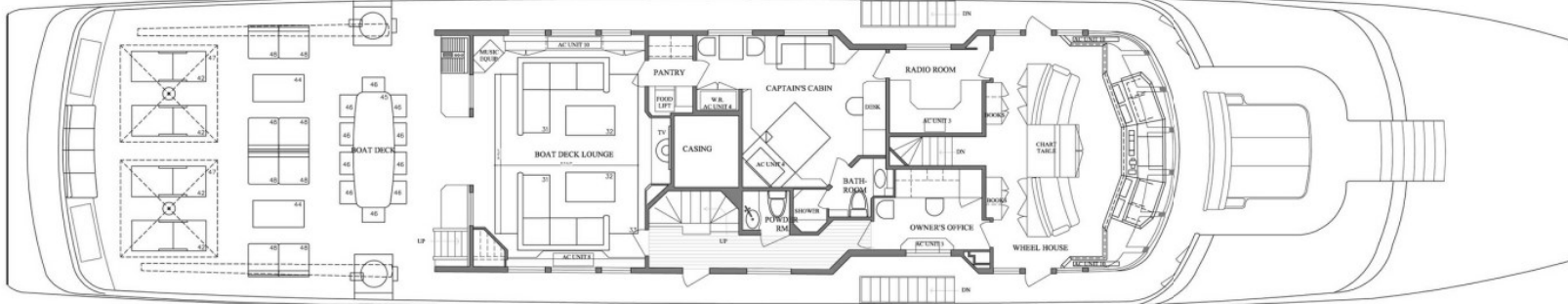
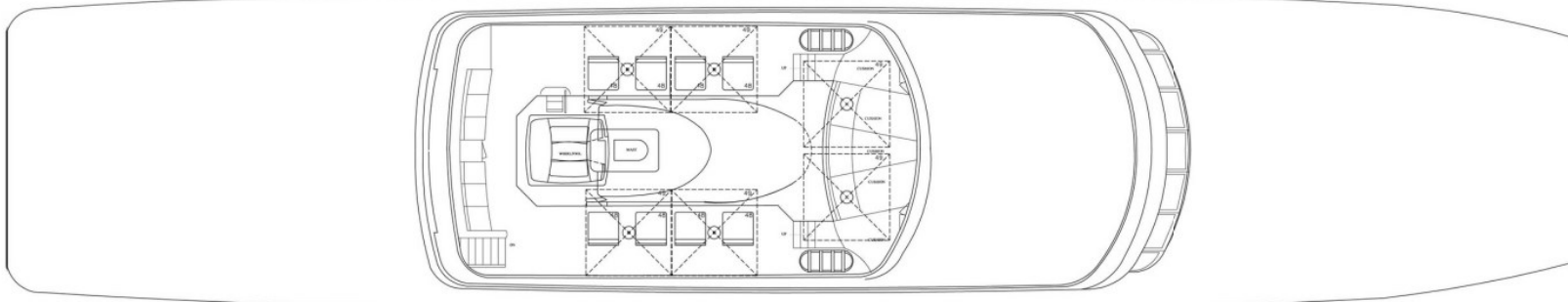
A stylish jacuzzi area and large sun pad area provides panoramic views from the sun deck

Zero speed stabilisers

Owned and maintained by multiple distinguished yachtsmen

Tenders

1 x 18ft Novurania, with Yamaha 150hp 4-Stroke



BURGESS

WORLD CLASS. WORLD WIDE.

London +44 20 7766 4300	Monaco +377 97 97 81 21	New York +1 212 223 0410	Miami +1 305 672 0150	Singapore +65 9665 8990	Beverly Hills +1 310 424 5112	Palma +34 971 495 413	Athens +30 210 967 1661
	Dubai +971 4 425 5874	Phuket +66 7623 9739	Hong Kong +852 6496 2094	Tokyo +81 46 738 8612	Sydney +61 499 945 557	Mumbai +91 98211 67253	

Advertising of these vessel(s) in printed publications, on the internet or in any other medium is not permitted without prior written permission from Burgess. All particulars are given in good faith and are believed correct but they cannot be guaranteed.

Last updated: 27 March 2024