

BENIK



BENIK

APERÇU.

Chartering BENIK 40m (132ft) offers a delightful blend of grand design and relaxed living, ideal for those who appreciate refinement and privacy on the water. Her commanding presence is matched by a calm, welcoming interior. Whether you're holidaying as a family, with friends, or as a group of couples seeking quiet luxury, BENIK adapts effortlessly to the tone of your voyage.

The main lounge offers the scale and elegance expected of a yacht of this calibre. Four sumptuous sofas frame a central table, creating a sociable, easy-going space. A rise-up TV keeps you in touch with live sports and films, discreetly hidden when not in use. Ahead is the formal dining area, and forward is the lobby and your private haven, the master suite. Light-toned furnishings and fine wood panelling create a serene backdrop, while an office and walk-through dressing room lead to a bright en suite bathroom complete with his-and-hers sinks.

On the lower deck, the accommodation is impressively versatile. With two twin suites, two doubles, and two VIP half-beam double suites, each space is designed for comfort and privacy. BENIK easily welcomes up to twelve sleeping guests in total, making her ideal for extended families or mixed-age groups.

Most of your time will be spent on the sundeck. Here, a jacuzzi, dinette seating, oversized sunpads and an aft al fresco lounge area complete the range of options for soaking up the sun or enjoying a sundowner in complete privacy.

There's more deck space tailored for relaxation on the foredeck, with sunpads, C-shaped seating, and views forward over the bows. The aft dining area runs full beam, which is ideal for long lunches or shaded evening dinners. Inside is a sky lounge with a games table and a fold-down TV, and ahead is an office space.

For those with energy to burn, BENIK's gym includes a multi-gym, dumbbells and kettlebells. An exercise bike is positioned on the deck to enjoy views and fresh air. Watersports enthusiasts will enjoy a collection of toys: a Castoldi jet tender, four SeaBobs, a jetski, a flyboard, wake jet board, towables, a paddleboard, plus fishing and snorkelling gear.

BENIK is served by a highly trained crew who'll deliver exceptional service without intrusion. From gourmet dining to daily itinerary planning, every detail is handled with care, ensuring your experience on board is both effortless and unforgettable.

Principales caractéristiques

Recently refitted

Exercise equipment

A good choice of interior and exterior dining areas

Jacuzzi on the sun deck

A crew with local expertise

Zero speed stabilisers to reduce any rolling motion while at anchor

BENIK

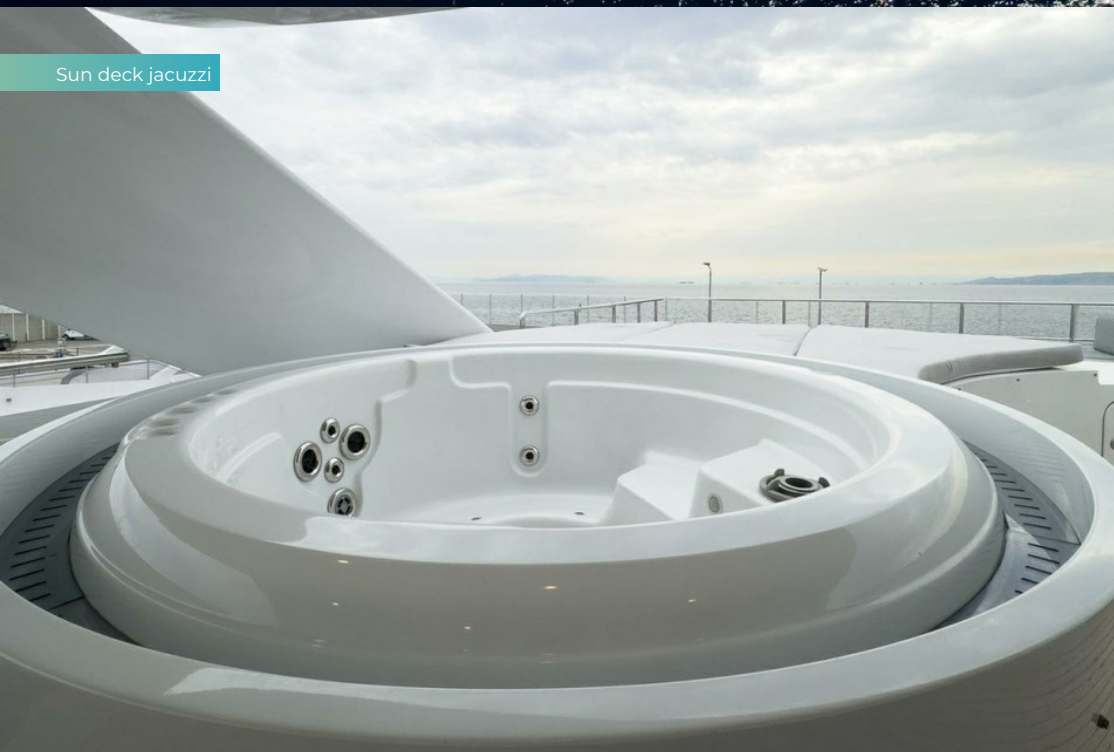
Aerial view



Aerial view



Sun deck jacuzzi



Sun deck seating area



BURGESS

Discover the difference.
burgessyachts.com



BENIK

Sun deck



Upper deck aft



Upper deck aft



Upper deck aft



BURGESS

Discover the difference.
burgessyachts.com



BENIK

Main deck lounge



Main deck lounge



Main deck dining area



Sky lounge



BENIK

Sky lounge



Sky lounge



Master cabin



Master office



BURGESS

Discover the difference.
burgessyachts.com



BENIK

Master bathroom en suite



Master shower room



VIP cabin



Double cabin



BURGESS

Discover the difference.
burgessyachts.com



BENIK

Double cabin



Double cabin



Guest bathroom en suite



Twin cabin



BURGESS

Discover the difference.
burgessyachts.com



BENIK

Gym



Gym



Stern view



Watersports



BURGESS

Discover the difference.
burgessyachts.com



BENIK

Cruising



BURGESS

Discover the difference.
burgessyachts.com



BENIK

SPECIFICATIONS.



Longueur
40,4m



Chantier
2002 (refitted 2024), Heesen, The Netherlands



Designer d'intérieur
Omega Architects



Largeur
8,6m



Tirant d'eau
2,2m



Tonnage brut
372



Vitesse de croisière
15 knots



Vitesse maximale
22 knots



Consommation de carburant en vitesse de croisière
600 litres par heure



Moteurs
2 x 2 720hp MTU



Invités
12



Nb de cabines invités
6 (4 x double, 2 x twin, 2 x additional berths)



Équipage
8

Note

Fully licensed for charters in Greek waters.

[Voir le yacht sur le site](#)

[Regarder la vidéo du yacht](#)



BURGESS

Discover the difference.
burgessyachts.com



ANNEXES & JEUX NAUTIQUES



1 x Tender



1 x Deck jacuzzi



1 x Waverunner



4 x SeaBobs



1 x eFoil



1 x Kayak



1 x Stand up paddleboard



1 x Wakejet



Waterskis



Inflatable toys



Snorkelling gear



Fishing gear

BENIK

REMISE EN FORME & BIEN-ETRE



Cross trainer



Free weights



Treadmill



Upright stationary bike

BURGESS

Discover the difference.
burgessyachts.com



BENIK

COMMUNICATION ET DIVERTISSEMENT



Wi-Fi internet access

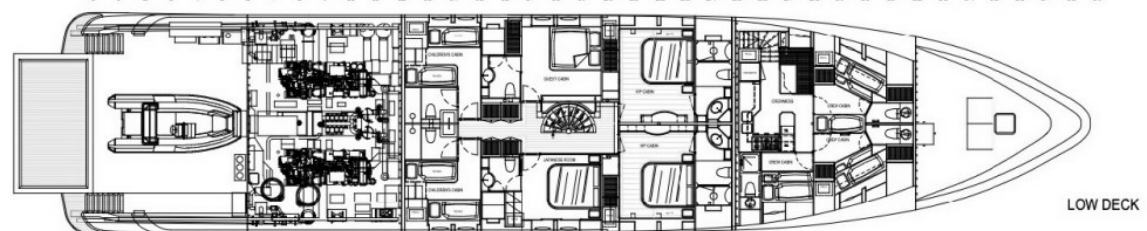
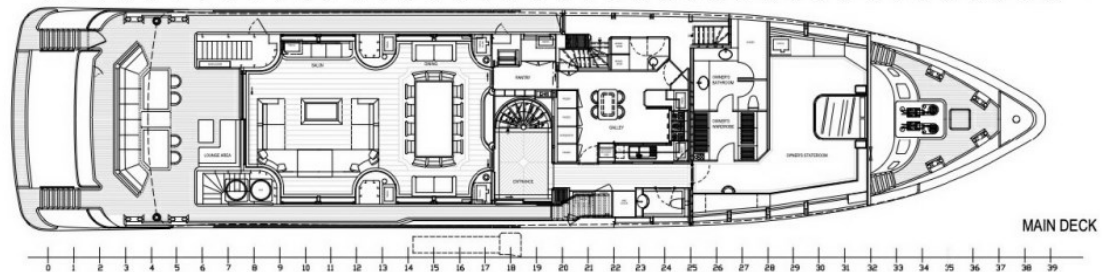
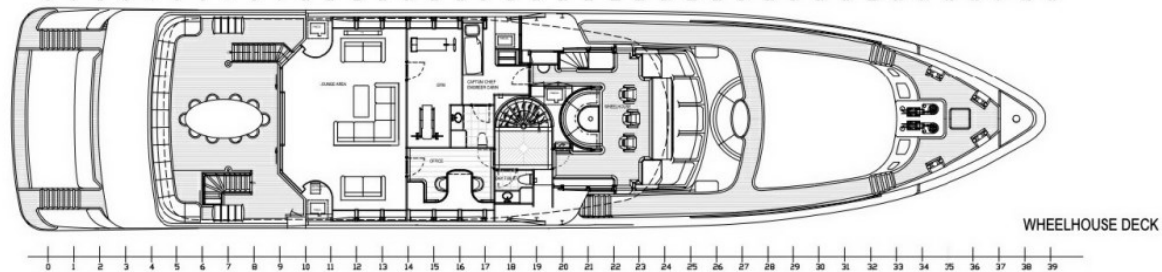
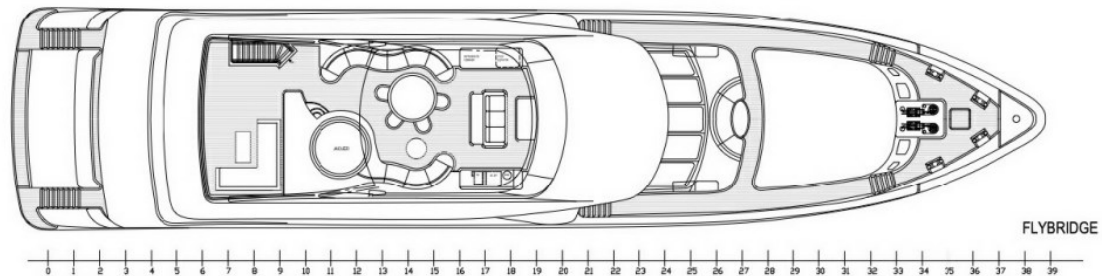


Streaming services

BURGESS

Discover the difference.
burgessyachts.com





BURGESS

WORLD CLASS. WORLD WIDE.

London +44 20 7766 4300	Monaco +377 97 97 81 21	New York +1 212 223 0410	Miami +1 305 672 0150	Singapore +65 9665 8990	Beverly Hills +1 310 424 5112	Palma +34 971 495 413	Athens +30 210 967 1661
Dubai +971 4 425 5874	Phuket +66 7623 9739	Hong Kong +852 6496 2094	Tokyo +81 46 738 8612	Sydney +61 499 945 557	Mumbai +91 98211 67253	Shanghai +86 159 0162 1898	Rio de Janeiro +55 21 2553-3238
Aspen +1 970 710 2294							

La publicité de ce(s) navire(s) dans des publications imprimées, sur Internet ou sur tout autre support n'est pas autorisée sans l'autorisation écrite préalable de Burgess.
Toutes les informations sont données de bonne foi et sont considérées comme exactes, mais elles ne peuvent être garanties.

Dernière mise à jour : 19 mai 2025