

# BELLE ISLE

---



BELLE ISLE

# SPECIFICATIONS.



Prix demandé  
**Price on application**



Chantier  
**2010, Kingship Marine, China**



Longueur  
**27,2m**



Largeur  
**7,4m**



Tirant d'eau  
**2m**



Tonnage brut  
**175**



Vitesse de croisière  
**8 knots**



Vitesse maximale  
**12 knots**



Autonomie  
**4 000 nm**



Pavillon  
**Cayman Islands**



Position  
**West Mediterranean**



Classe  
**Lloyd's Register (LR) MCA**



Designer extérieur  
**Vripack**



Designer d'intérieur  
**Addison Nelson Design**



Construction  
**Hull - Steel, Superstructure - Aluminium, Deck - Teak**



Équipage  
**4**



Invités  
**8**



Cabines  
**4 (2 x double, 2 x twin)**



Moteurs  
**2 x 479hp Caterpillar**



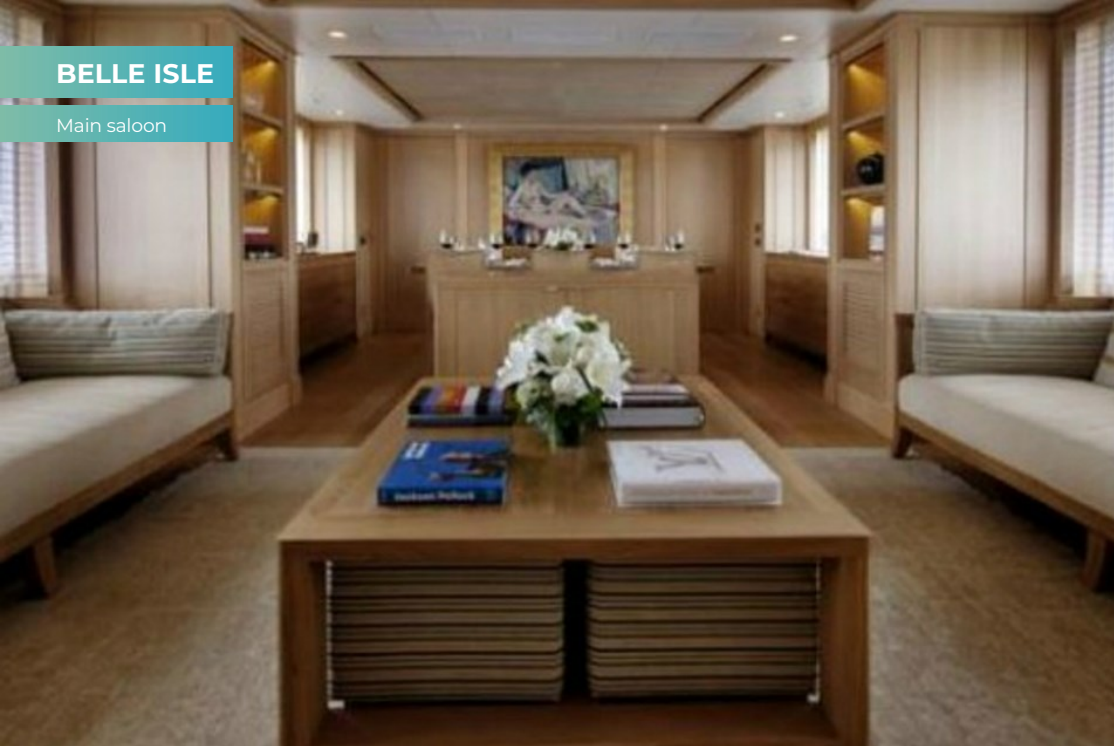
Propulsion  
**Twin screw diesel yacht**

[Voir le yacht sur le site](#)



BELLE ISLE

Main saloon



Main saloon



Dining



Master cabin



BELLE ISLE

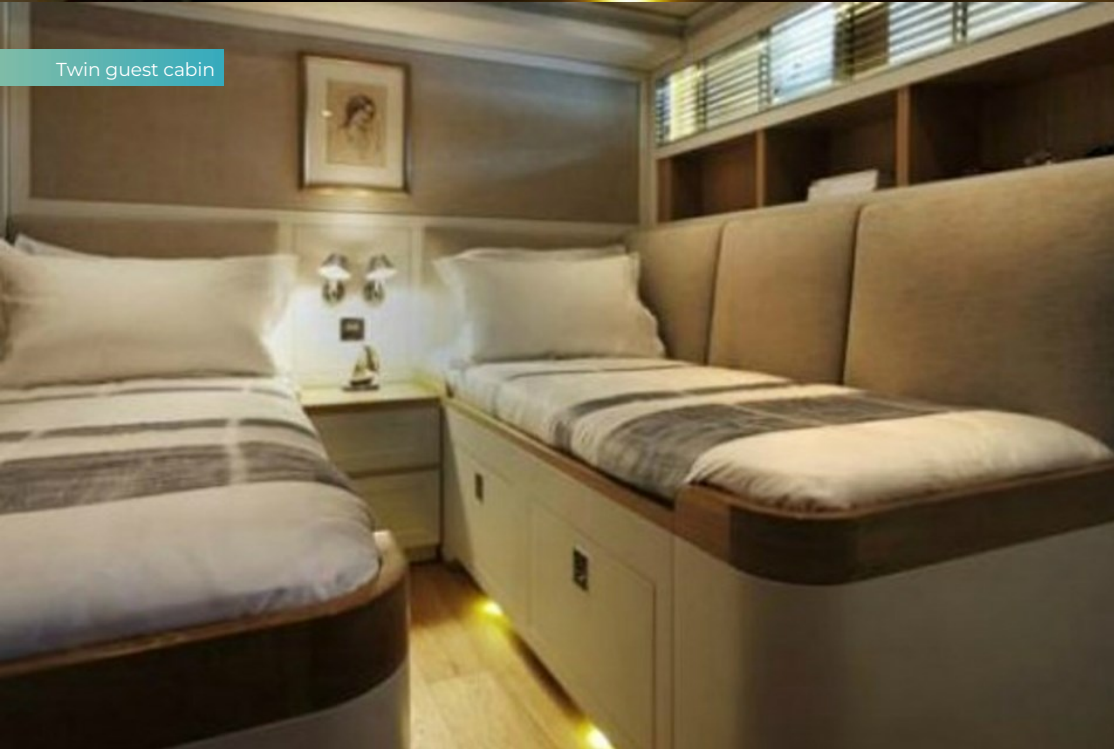
Guest double cabin



Bathroom



Twin guest cabin



Upper saloon



# BELLE ISLE

Bridge



Flybridge deck



Flybridge deck



Main deck aft



BELLE ISLE



BURGESS

Discover the difference.  
burgessyachts.com



BELLE ISLE

# APERÇU.

**BELLE ISLE is an explorer yacht from the Columbus 90 series with exterior design and engineering by Dutch naval architects Vripack and interiors by UK studio Addison Nelson Design. Her steel hull and aluminium superstructure were constructed to Lloyd's classification and MCA compliance for commercial operation and she was delivered in 2010 by Kingship Marine.**

She has an interior volume of 175GT allowing for spacious and comfortable accommodation for eight guests in four cabins. With a maximum range of 4,000nm and Quantum zero speed stabilisers for comfort on arrival, she is well suited to long-range cruising.

BELLE ISLE's split-level sun deck has a lounge and flybridge forward and steps lead down to a jacuzzi and plenty of versatile deck space for exercise, relaxation or entertainment. The tender is stowed aft and launched with a deck crane.

Large picture windows let plenty of light into the main saloon, which has a formal dining area forward and a dayhead off the lobby. Large glass doors lead to the main deck aft where there is open-air dining with U-shaped seating. Walkaround sidedecks enable guests to enjoy views in every direction.

The split-level owner's suite, forward on the main deck, has wraparound windows that offer 180-degree views and steps lead down to a luxuriously appointed bathroom forward. On the lower deck there is a full-beam VIP suite with a full-size bath and two twin cabins (all en suite) can be found on the lower deck.

Twin 479hp Caterpillar diesel engines give her a top speed of 12 knots and she has transatlantic range at her passage speed of eight knots.

## Principales caractéristiques

---

**Trans-Atlantic capabilities**

---

**Quantum zero speed stabilisers**

---

**One owner since new**

---

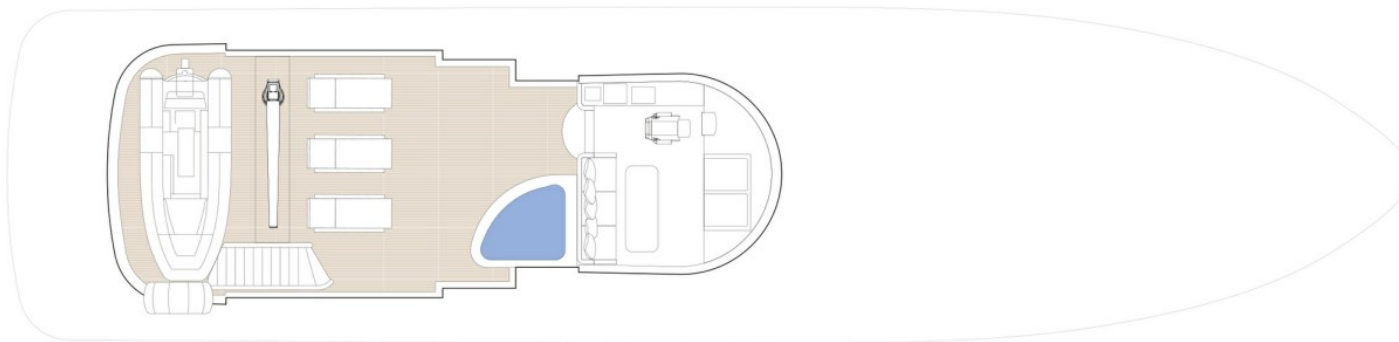
**4,000nm range**

---

**Steel and aluminium construction**

---

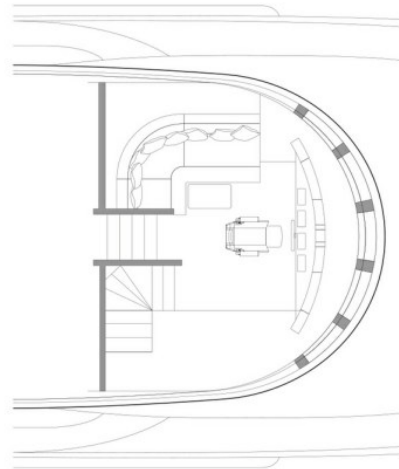
# TOP DECK



- GUEST AREAS
- OWNER'S SUITE
- GUEST CABINS
- JACUZZI



# WHEELHOUSE DECK



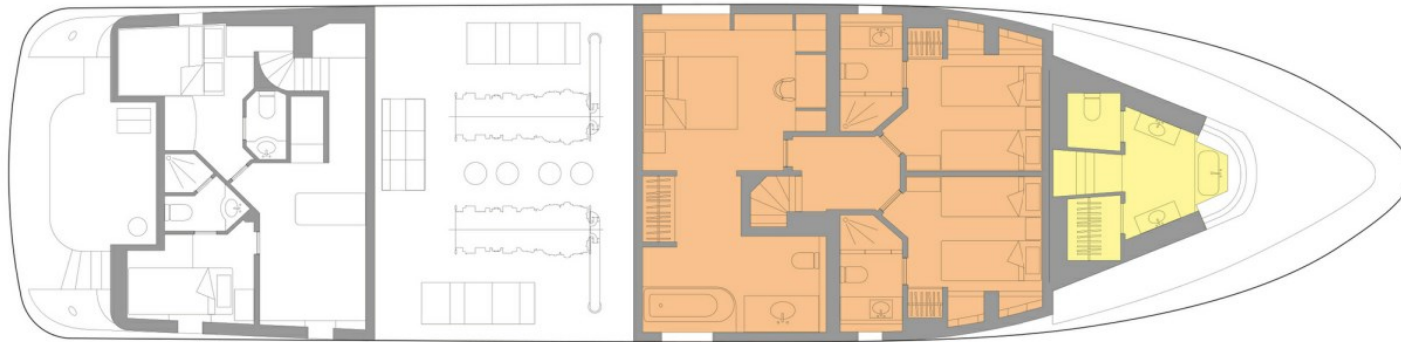
■ GUEST AREAS   ■ OWNER'S SUITE   ■ GUEST CABINS   ■ JACUZZI

# MAIN DECK



■ GUEST AREAS   ■ OWNER'S SUITE   ■ GUEST CABINS   ■ JACUZZI

# LOWER DECK



■ GUEST AREAS   ■ OWNER'S SUITE   ■ GUEST CABINS   ■ JACUZZI

# BURGESS

# WORLD CLASS. WORLD WIDE.

<b>London</b> +44 20 7766 4300	<b>Monaco</b> +377 97 97 81 21	<b>New York</b> +1 212 223 0410	<b>Miami</b> +1 305 672 0150	<b>Singapore</b> +65 9665 8990	<b>Beverly Hills</b> +1 310 424 5112	<b>Palma</b> +34 971 495 413	<b>Athens</b> +30 210 967 1661
<b>Dubai</b> +971 4 425 5874	<b>Phuket</b> +66 7623 9739	<b>Hong Kong</b> +852 6496 2094	<b>Tokyo</b> +81 46 738 8612	<b>Sydney</b> +61 499 945 557	<b>Mumbai</b> +91 98211 67253	<b>Shanghai</b> +86 187 0898 6800	<b>Rio de Janeiro</b> +55 21 2553-3238
<b>Aspen</b> +1 970 710 2294							

La publicité de ce(s) navire(s) dans des publications imprimées, sur Internet ou sur tout autre support n'est pas autorisée sans l'autorisation écrite préalable de Burgess.  
Toutes les informations sont données de bonne foi et sont considérées comme exactes, mais elles ne peuvent être garanties.

Dernière mise à jour : 03 février 2025