

BELLE ISLE



BELLE ISLE

SPECIFICATION.



Asking price
EUR 2,800,000



Built
2010, Kingship Marine, China



Length
27.2m (89.2ft)



Beam
7.4m (24.3ft)



Draft
2m (6.6ft)



Gross tonnage
175



Cruising speed
8 knots



Maximum speed
12 knots



Range
4,000 nm



Flag
Cayman Islands



Lying
West Mediterranean



Class
Lloyds, MCA



Exterior designer
Vripack



Interior designer
Addison Nelson Design



Construction
Hull - Steel, Superstructure - Aluminium, Deck - Teak



Crew
4



Guests
8



Cabins
4 (2 × double, 2 × twin)



Engines
2 × 479hp Caterpillar



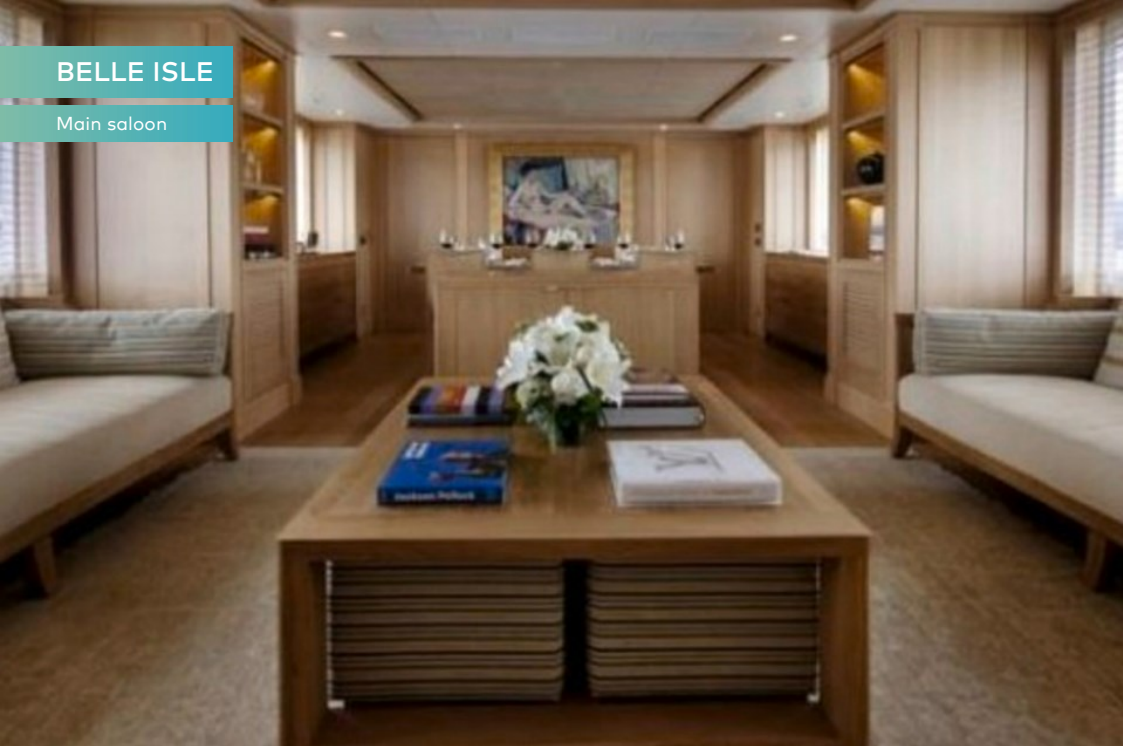
Propulsion
Twin screw diesel yacht

[View yacht on website](#)



BELLE ISLE

Main saloon



Main saloon



Dining



Master cabin



BELLE ISLE

Guest double cabin



Bathroom



Twin guest cabin



Upper saloon



BELLE ISLE

Bridge



Flybridge deck



Flybridge deck



Main deck aft



BELLE ISLE



BURGESS

Discover the difference.
burgessyachts.com



OVERVIEW.

BELLE ISLE is an explorer yacht from the Columbus 90 series with exterior design and engineering by Dutch naval architects Vripack and interiors by UK studio Addison Nelson Design. Her steel hull and aluminium superstructure were constructed to Lloyd's classification and MCA compliance for commercial operation and she was delivered in 2010 by Kingship Marine.

She has an interior volume of 175GT allowing for spacious and comfortable accommodation for eight guests in four cabins. With a maximum range of 4,000nm and Quantum zero speed stabilisers for comfort on arrival, she is well suited to long-range cruising.

BELLE ISLE's split-level sun deck has a lounge and flybridge forward and steps lead down to a jacuzzi and plenty of versatile deck space for exercise, relaxation or entertainment. The tender is stowed aft and launched with a deck crane.

Large picture windows let plenty of light into the main saloon, which has a formal dining area forward and a dayhead off the lobby. Large glass doors lead to the main deck aft where there is open-air dining with U-shaped seating. Walkaround sidedecks enable guests to enjoy views in every direction.

The split-level owner's suite, forward on the main deck, has wraparound windows that offer 180-degree views and steps lead down to a luxuriously appointed bathroom forward. On the lower deck there is a full-beam VIP suite with a full-size bath and two twin cabins (all en suite) can be found on the lower deck.

Twin 479hp Caterpillar diesel engines give her a top speed of 12 knots and she has transatlantic range at her passage speed of eight knots.

Key features

Trans-Atlantic capabilities

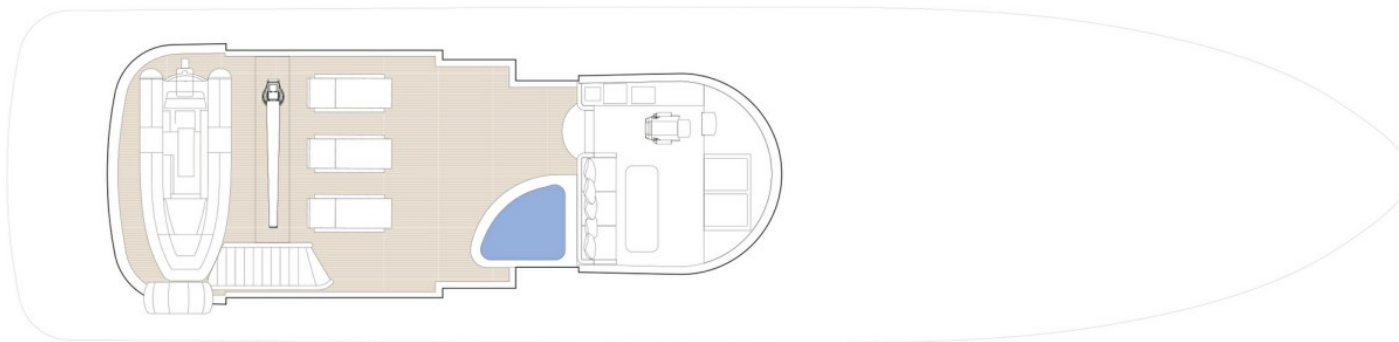
Quantum zero speed stabilisers

One owner since new

4,000nm range

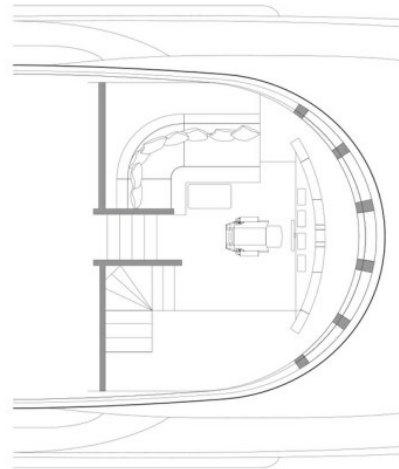
Steel and aluminium construction

TOP DECK



GUEST AREAS
 OWNER'S SUITE
 GUEST CABINS
 JACUZZI

WHEELHOUSE DECK



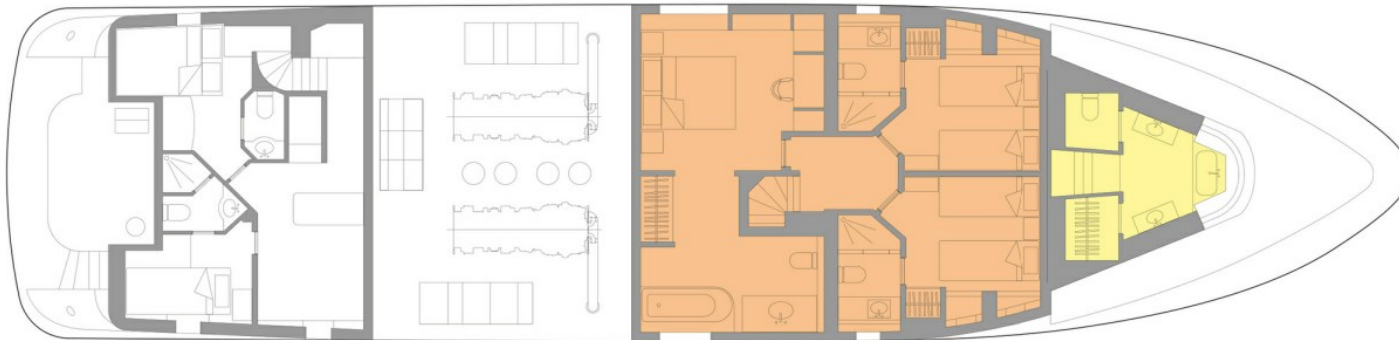
GUEST AREAS
 OWNER'S SUITE
 GUEST CABINS
 JACUZZI

MAIN DECK



GUEST AREAS
 OWNER'S SUITE
 GUEST CABINS
 JACUZZI

LOWER DECK



GUEST AREAS
 OWNER'S SUITE
 GUEST CABINS
 JACUZZI

BURGESS

WORLD CLASS. WORLD WIDE.

London +44 20 7766 4300	Monaco +377 97 97 81 21	New York +1 212 223 0410	Miami +1 305 672 0150	Singapore +65 9665 8990	Beverly Hills +1 310 424 5112	Palma +34 971 495 413	Athens +30 210 967 1661
	Dubai +971 4 425 5874	Phuket +66 7623 9739	Hong Kong +852 6496 2094	Tokyo +81 46 738 8612	Sydney +61 499 945 557	Mumbai +91 98211 67253	

Advertising of these vessel(s) in printed publications, on the internet or in any other medium is not permitted without prior written permission from Burgess. All particulars are given in good faith and are believed correct but they cannot be guaranteed.

Last updated: 01 March 2024