

# BELLA

---



BELLA

# OVERVIEW.

**The 45-metre yacht BELLA has some brilliant features that you rarely find in a charter yacht. Above all else, the accommodation layout sets her apart from most other vessels. All five guest cabins are on the main and upper decks, so no one gets relegated to the lower deck and even the double-to-twin convertible cabins have the same large windows as the master suite. Why shouldn't everyone in your group enjoy magnificent sea views from their beds?**

Another great feature is the seamless flow between the sky lounge and the upper aft deck when the full-width glass doors are opened and folded all the way. This creates an expansive, sociable space where conversation flows freely between the indoor and outdoor lounges and the dining table between them, so everybody can enjoy each other's company from their own comfort zone. When fully enclosed, the sky lounge is an excellent media room with a huge screen for movies, TV or gaming, plus a table for board games on one side. The main deck saloon, meanwhile, is a bright and airy living room with sweeping sea views, well spaced lounge and dining areas and a sophisticated yet welcoming feel.

The sundeck also beckons with its elevated jacuzzi and panoramic lounge. It's a great place for your daily workout too, with state-of-the-art exercise machines in the shade of the arch and a cool breeze flowing past.

BELLA's enormous bathing platform is yet another highlight, folding out to create an additional large outside space at sea level. Inflatable platforms extend it still further, with a water slide module on far end – effectively adding another 40 per cent to the yacht's overall length.

Up front on the main deck, the main cabin of the full-beam master suite is tastefully luxurious with a clean, slightly understated style. It's also impressively bright, with huge skylights above. On a clear dark night you can lie in bed and gaze straight up at the stars. The marble en suite bathroom is also outstanding with a large bathtub in the middle, beneath another big skylight, plus twin sinks and a separate shower. There's also a nice VIP suite on board, on the upper deck just behind the bridge.

## Key features

---

**Regularly maintained**

---

**Spa facilities: steam room**

---

**Beach club at sea level**

---

**Flexible cabin configurations**

---

**Exercise equipment**

---

**Stable and tight-knit crew**

---

**A good choice of exterior and interior dining areas**

---

**Jacuzzi on the sun deck**

---

**Zero speed stabilisers to reduce any rolling while at anchor**

---



BELLA

At anchor



At anchor



Sun deck jacuzzi



Sun deck





BELLA

Sun deck



Sun deck bar



Upper deck aft



Upper deck aft



BURGESS

Discover the difference.  
burgessyachts.com



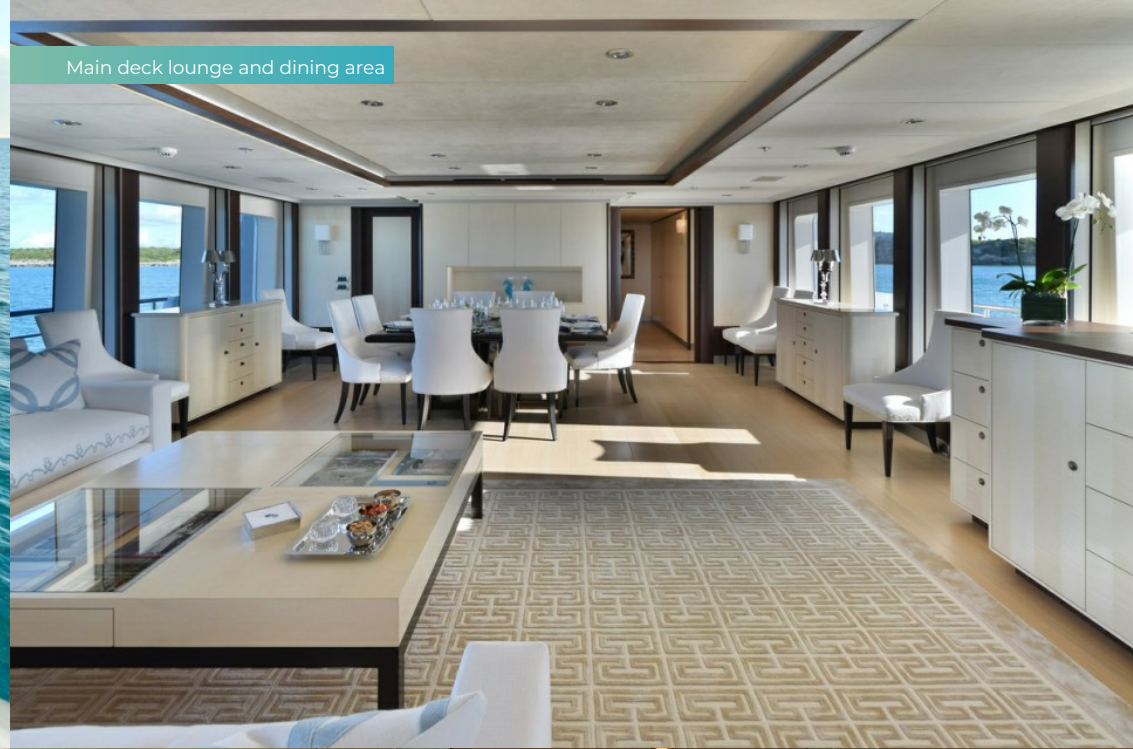


BELLA

Swim platform



Main deck lounge and dining area



Main deck dining area



Sky lounge



BURGESS

Discover the difference.  
burgessyachts.com





BELLA

Master cabin



Master cabin



Master cabin en suite



Double cabin



BURGESS

Discover the difference.  
burgessyachts.com





BELLA

Double cabin



Double cabin



Twin cabin



Watertoys



BURGESS

Discover the difference.  
burgessyachts.com





BELLA

Watertoys



Watertoys



Watertoys



Aerial view



BURGESS

Discover the difference.  
burgessyachts.com





BELLA

At anchor



BURGESS

Discover the difference.  
[burgessyachts.com](http://burgessyachts.com)





BELLA

# SPECIFICATION.



Length  
**45m (147.6ft)**



Built  
**2008 (refitted 2014), Feadship, Royal Van Lent,  
The Netherlands**



Interior designer  
**Sinot Yacht Design/FPA Architects**



Beam  
**9.2m (30.2ft)**



Draft  
**2.7m (8.9ft)**



Gross tonnage  
**499**



Cruising speed  
**12 knots**



Maximum speed  
**15 knots**



Fuel consumption at cruising speed  
**188 litres per hour**



Engines  
**2 x 1,055hp MTU**



Guests  
**12**



No. of guest cabins  
**6 (4 x double, 2 x double/twin, 2 x additional  
berths)**



Crew  
**9**

[View yacht on website](#)

[Watch yacht video](#)



BURGESS

Discover the difference.  
burgessyachts.com





BELLA

# TENDERS & TOYS



1 × Tender



1 × Deck jacuzzi



2 × Waverunners



3 × SeaBobs



1 × eFoil



1 × Jetsurf



2 × Kayaks



2 × Stand up paddleboards



Pedal board



Surfboard



Wakeboard



Waterskis



Trampoline



Aquapark



Inflatable tows



Snorkelling gear



RYA training centre for jetskis  
& waverunners



BELLA

# FITNESS & WELLNESS



Cross trainer



Free weights



Yoga mats



Hamam/Steam room

BURGESS

Discover the difference.  
burgessyachts.com





BELLA

# COMMUNICATION & ENTERTAINMENT



Wi-Fi internet access



Starlink



Satellite television



Speaker systems



Streaming services



Video games



Karaoke





Profile

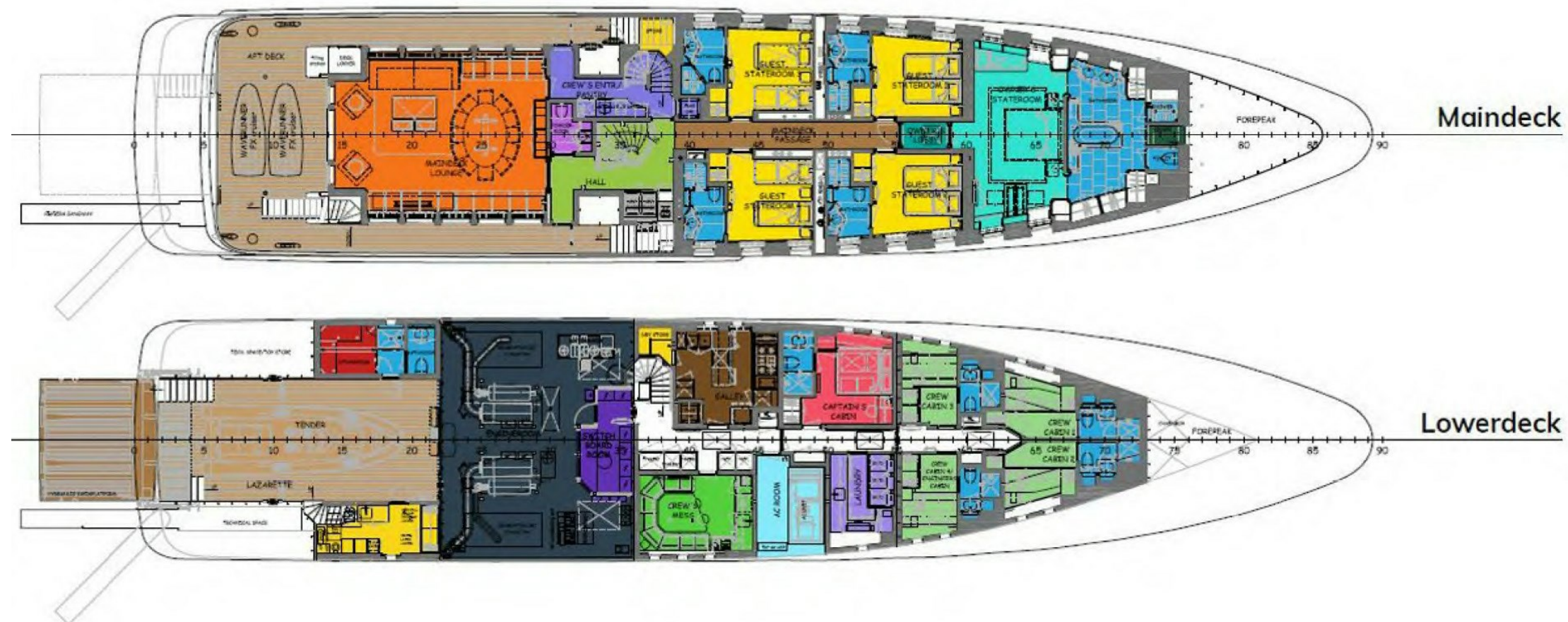


Sundeck



Bridgedeck







# BURGESS

# WORLD CLASS. WORLD WIDE.

<b>London</b> +44 20 7766 4300	<b>Monaco</b> +377 97 97 81 21	<b>New York</b> +1 212 223 0410	<b>Miami</b> +1 305 672 0150	<b>Singapore</b> +65 9665 8990	<b>Beverly Hills</b> +1 310 424 5112	<b>Palma</b> +34 971 495 413	<b>Athens</b> +30 210 967 1661
<b>Dubai</b> +971 4 425 5874	<b>Phuket</b> +66 7623 9739	<b>Hong Kong</b> +852 6496 2094	<b>Tokyo</b> +81 46 738 8612	<b>Sydney</b> +61 499 945 557	<b>Mumbai</b> +91 98211 67253	<b>Shanghai</b> +86 159 0162 1898	<b>Rio de Janeiro</b> +55 21 2553-3238
<b>Aspen</b> +1 970 710 2294							

Advertising of these vessel(s) in printed publications, on the internet or in any other medium is not permitted without prior written permission from Burgess. All particulars are given in good faith and are believed correct but they cannot be guaranteed.

Last updated: 27 May 2025