

BATON ROUGE



BATON ROUGE

SPECIFICATIONS.



Prix demandé
EUR 59 950 000



Chantier
2010, Icon Yachts, The Netherlands



Longueur
62,5m



Largeur
12,1m



Tirant d'eau
3,7m



Tonnage brut
1 423



Vitesse de croisière
13 knots



Vitesse maximale
15,5 knots



Pavillon
Isle of Man



Position
Caribbean



Classe
Lloyd's Register (LR) ⌘ 100A1 SSC Yacht, Mono, G6, ⌘ LMC



Designer extérieur
Tim Heywood



Designer d'intérieur
RWD



Construction
Hull - Steel, Superstructure - Aluminium, Deck - Teak



Équipage
18



Invités
14



Cabines
7 (5 × double, 2 × double/twin)



Moteurs
2 × 2 480hp MTU



Propulsion
Twin screw diesel yacht

Note

Not available for sale to US residents while in US waters.

[Voir le yacht sur le site](#)

[Regarder la vidéo du yacht](#)



BATON ROUGE

Main deck lounge



Main deck lounge



Main deck dining room



Main deck master cabin



BATON ROUGE

Main deck master cabin



Main deck master bathroom en suite



Main deck master bathroom en suite



Lower deck double cabin



BATON ROUGE

Lower deck 2 x twin cabins convertible



Guest cabin en suite



Upper deck VIP cabin 1



Upper deck VIP cabin 2



BATON ROUGE

Upper deck VIP cabin en suite



Upper deck observation lounge



Upper deck lounge games table



Upper deck lounge



BATON ROUGE

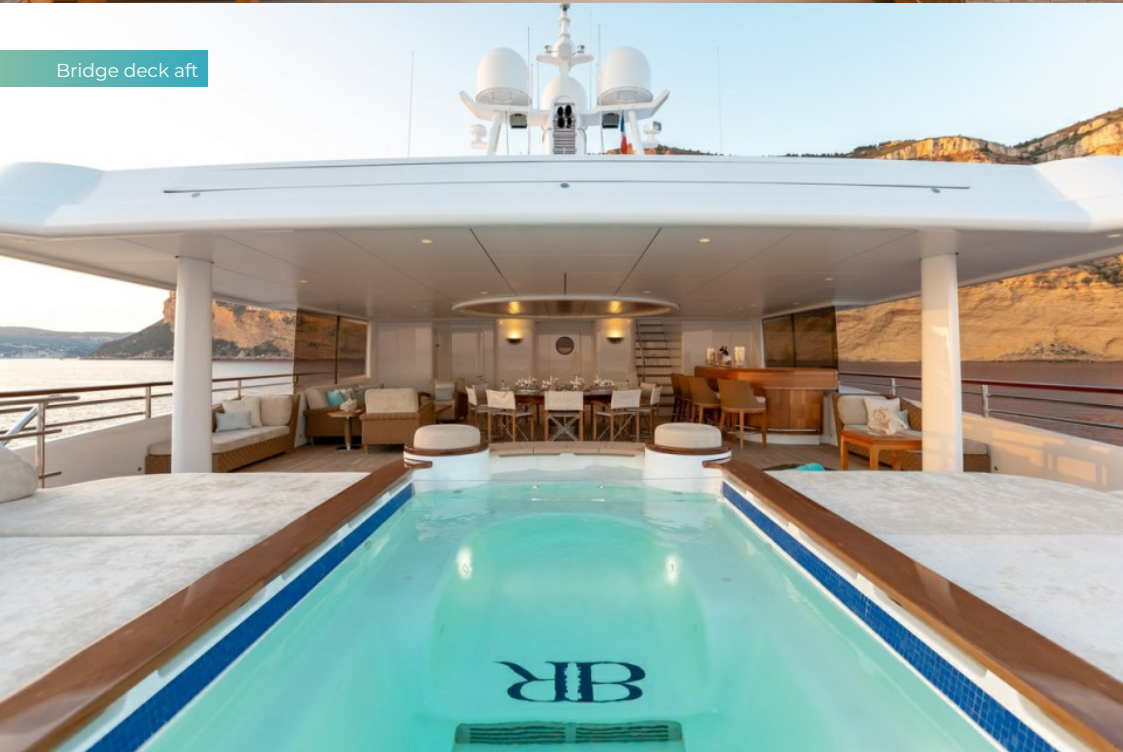
Upper deck outdoor dining area



Upper deck lounge



Bridge deck aft



Bridge deck jacuzzi



BATON ROUGE

Bridge deck aft



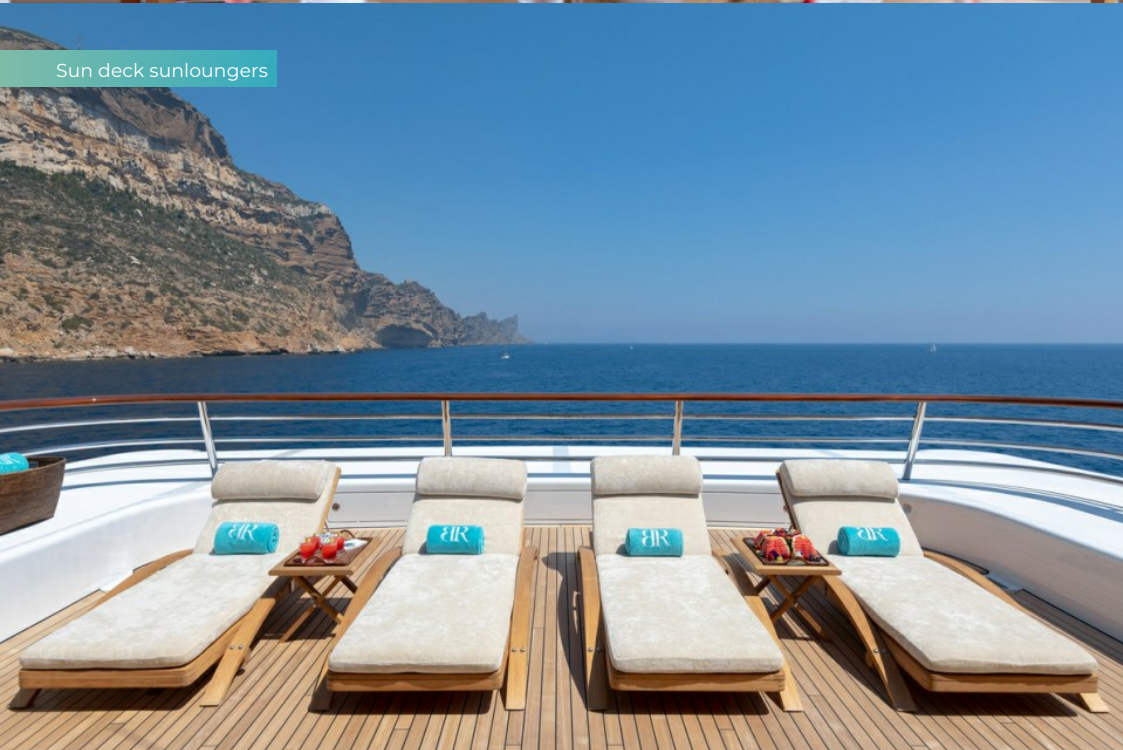
Bridge deck bar



Sun deck



Sun deck sunloungers



BATON ROUGE

Sun deck bar



Lower deck



Gym



Lower deck beach club



BATON ROUGE

Beach club



Jetskis



BATON ROUGE

APERÇU.

Exquisitely designed, this five-deck masterpiece is unsurpassed in both style and space. With a stunning beach club and luxurious sun deck, there is only one BATON ROUGE.

Boasting more volume across her six decks than any other 62.5m yacht, BATON ROUGE's Tim Heywood profile is as iconic as her sublime RWD interior. Designed with a super-stylish beach house theme, the guest areas have a cool, comfortable vibe that perfectly suits both relaxation and entertaining.

Start the day with an energising workout in the gym, or swim against jets in the bridge deck pool to work up an appetite. Or if you prefer a more relaxed morning, have a coffee and a long, leisurely breakfast on the bridge deck aft, then stretch out on the sun pads that flank the pool.

Guests will gravitate to the sun deck where there is more than enough sunbathing space for 12 people to unwind, be it on the gigantic circular sun pad forward, or the peaceful sun loungers aft. Enjoy a relaxed, gourmet lunch in the shade of the superstructure, then retire to the fresh, bright upper deck lounge with its ingenious bespoke games table, or enjoy the views and the silence in the panoramic observation lounge.

As the sun drops and the heat subsides, burn off some energy on the water with BATON ROUGE's huge selection of watertoys. Take a break in the large, luxurious beach club or grab a snorkel and plunge off the swim platform for a more sedate encounter with the sea.

As evening draws in the sophisticated main lounge is the perfect place for cocktails, and the chef will create an exquisite fine dining experience either al fresco or in the formal dining room on the main deck. At night head up to the sun deck which has a cool club atmosphere with its own light show and disco, or take a cognac to the observation lounge and enjoy the library.

As you would expect from a luxury superyacht, BATON ROUGE has impeccable accommodation for 14 guests in seven en suite cabins, spread across three decks. The vast, 100sqm master suite is forward on the main deck and comprises of two private offices, a dressing room and separate vanity, and a huge bathroom with frosted glass rainfall shower and blue marble bath. Two VIP suites are located on the upper deck and four further double cabins are on the lower deck, two of which convert to twins.

Principales caractéristiques

Enormous volume for a 62m @ 1,423GT

Five decks

7 spacious cabins

Beach club with direct access from guest cabins

Forward Observation Lounge

Two Owner's studies

Full width upper deck lounge

Huge sun deck

3 x on board tenders (2 x fwd & limo tender aft)

Tim Heywood & RWD design

Very successful charter yacht

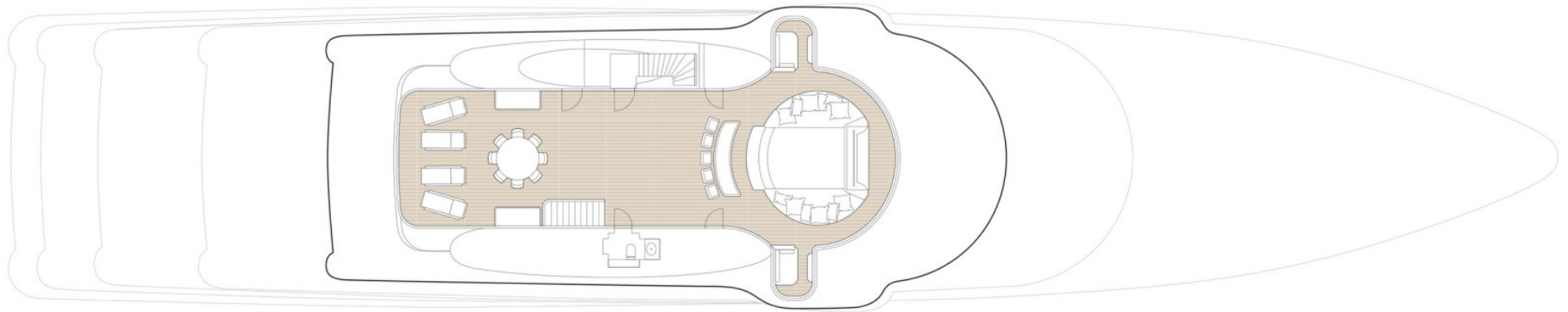
Same owner since build



Annexes

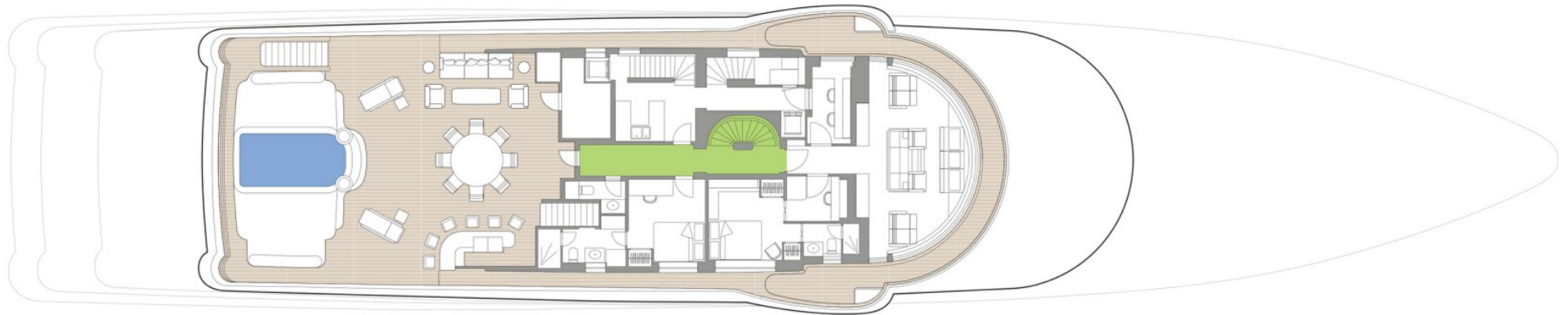
8m Yachtwerft Meyer Limo tender, 7.1m Castoldi Jet Tender 23

SUN DECK



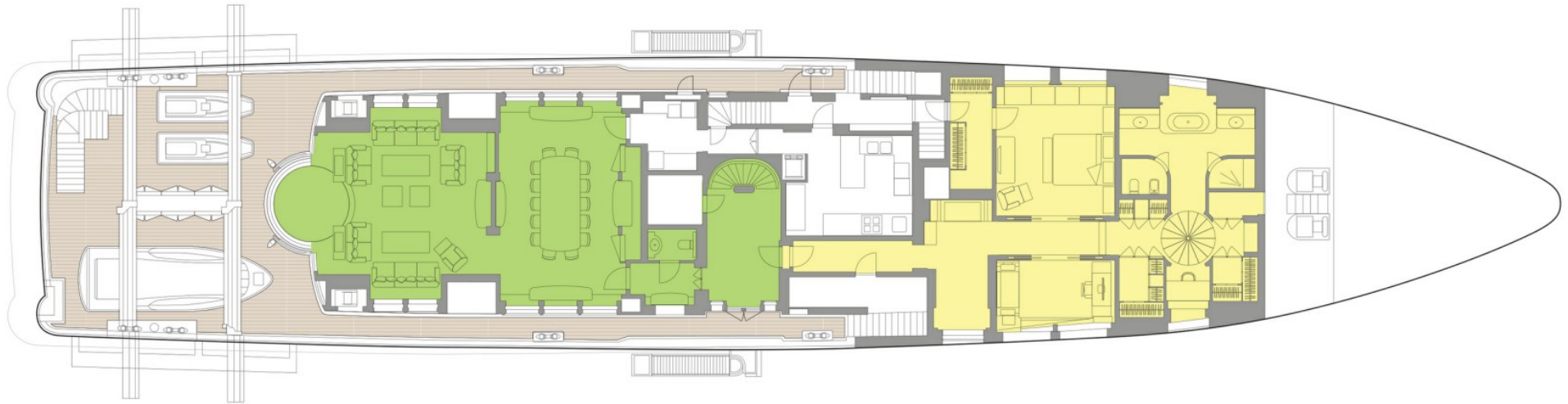
- GUEST AREAS
- MASTER SUITE
- VIP SUITE
- GUEST CABINS
- GYM
- JACUZZI

BRIDGE DECK



- GUEST AREAS
- MASTER SUITE
- VIP SUITE
- GUEST CABINS
- GYM
- JACUZZI

MAIN DECK



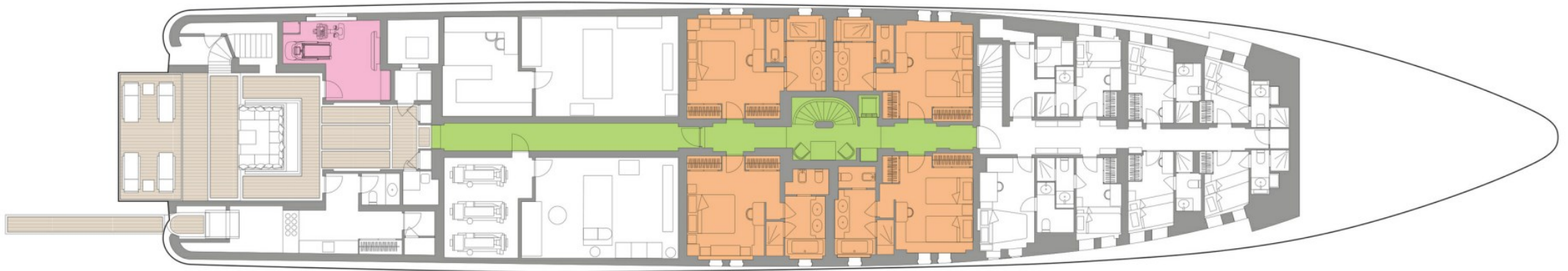
- GUEST AREAS
- MASTER SUITE
- VIP SUITE
- GUEST CABINS
- GYM
- JACUZZI

UPPER DECK



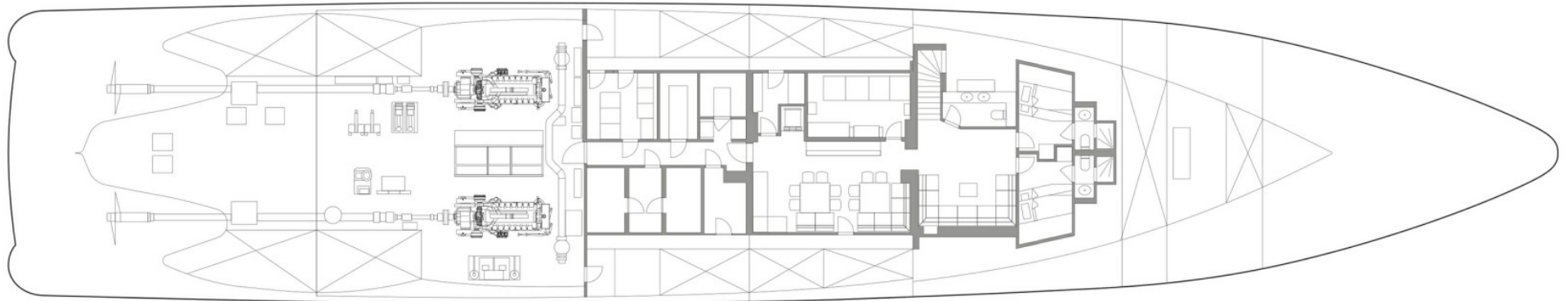
- GUEST AREAS
- MASTER SUITE
- VIP SUITE
- GUEST CABINS
- GYM
- JACUZZI

LOWER DECK



- GUEST AREAS
- MASTER SUITE
- VIP SUITE
- GUEST CABINS
- GYM
- JACUZZI

TANK DECK



BURGESS

WORLD CLASS. WORLD WIDE.

London +44 20 7766 4300	Monaco +377 97 97 81 21	New York +1 212 223 0410	Miami +1 305 672 0150	Singapore +65 9665 8990	Beverly Hills +1 310 424 5112	Palma +34 971 495 413	Athens +30 210 967 1661
Dubai +971 4 425 5874	Phuket +66 7623 9739	Hong Kong +852 6496 2094	Tokyo +81 46 738 8612	Sydney +61 499 945 557	Mumbai +91 98211 67253	Shanghai +86 187 0898 6800	Rio de Janeiro +55 21 2553-3238
Aspen +1 970 710 2294							

La publicité de ce(s) navire(s) dans des publications imprimées, sur Internet ou sur tout autre support n'est pas autorisée sans l'autorisation écrite préalable de Burgess.
Toutes les informations sont données de bonne foi et sont considérées comme exactes, mais elles ne peuvent être garanties.

Dernière mise à jour : 28 février 2025