

# BARACUDA VALLETTA

---



BARACUDA VALLETTA

# APERÇU.

**If you're looking for a sailing yacht that combines large and luxurious contemporary living space with excellent performance under sail, BARACUDA VALLETTA definitely deserves a place on your shortlist. This 50-metre (164ft) cutter-rigged ketch, designed by the renowned naval architect Ron Holland and built at the esteemed Perini Navi shipyard, has a successful racing record in superyacht regattas and offers superb cruising accommodation for 10 guests that's quite unlike the traditional, often cluttered interior of a typical sailing yacht.**

Her exceptionally spacious interior – which adds up to 410 gross tons – is a unique, original masterpiece of modern minimalist design by John Pawson, whose other notable projects include the brand new Design Museum in London. Avoiding the conventional practice of dividing a sailing yacht's main social area with partition walls, BARACUDA VALLETTA has a spectacular open plan main deck saloon that flows almost seamlessly into her sunken aft cockpit, creating a 22-metre long inside-outside living space.

Every object, fitting and fixture within the guest accommodation has been carefully considered and curated, to stunning effect. But visual impact aside, this is also a remarkably warm, welcoming and comfortable yacht. Her extended windows provide ample natural lighting and uninterrupted panoramic views of the seascape. The master suite is a full-beam cabin with a real sense of space, plus its own private lounge and office areas.

With her enormous, flaming purple sails fully hoisted and unfurled, BARACUDA VALLETTA has an exhilarating turn of speed and a powerful presence on the water. The impressively engineered integrated sailing system that controls her immense sailpower is controlled with great precision, at the touch of a few buttons, from the twin helm stations on the elevated flybridge. To sail a boat like this, fully powered up and sending sheets of spray across the foredeck, is a unique sensation.

Her lifting keel opens up a huge choice of anchorages. Wherever you choose to take her, when the anchor goes down there's a vast amount of deck space to enjoy, on several levels. The sundeck has dining, lounging and sunbathing areas with commanding views. The aft deck becomes another large open-air space with steps leading down to a big hydraulic bathing platform where her fleet of boats and toys awaits. From wakeboards and waterskis to canoes, paddleboards and a SeaBob, there's plenty of fun to be had.

## Principales caractéristiques

---

**Regularly maintained**

---

**Hydraulic swim platform**

---

**A crew with local expertise**

---

**Shaded deck dining and deck areas**

---

# BARACUDA VALLETTA

Sailing



Aerial view



At anchor



At anchor



# BARACUDA VALLETTA

Sun deck



Sun deck



Main deck aft



Main deck aft



# BARACUDA VALLETTA

Main deck lounge



Main deck lounge



Main deck lounge



Main deck dining



# BARACUDA VALLETTA

Master cabin - Lower deck



Master cabin - Lower deck



Double cabin - Lower deck



Twin cabin - Lower deck



# BARACUDA VALLETTA

En suit



Toys



Sailing



BURGESS

Discover the difference.  
[burgessyachts.com](http://burgessyachts.com)



BARACUDA VALLETTA

# SPECIFICATIONS.



Longueur  
**50m**



Chantier  
**2009 (refitted 2024), Perini Navi, Italy**



Designer d'intérieur  
**Perini Navi**



Largeur  
**10,5m**



Tirant d'eau min / max  
**4m/4m**



Déplacement  
**438 tonnes**



Vitesse de croisière  
**12 knots**



Vitesse maximale  
**14 knots**



Consommation de carburant en vitesse de croisière  
**180 litres par heure**



Invités  
**10**



Nb de cabines invités  
**5 (3 × double, 2 × twin)**



Équipage  
**9**

## Note

Fully licensed for charters in Greek waters.

[Voir le yacht sur le site](#)

[Regarder la vidéo du yacht](#)





# ANNEXES & JEUX NAUTIQUES



2 × Tenders



1 × SeaBob



2 × Kayaks



2 × Stand up paddleboards



Wakeboard



Waterskis



Inflatable tows



Snorkelling gear

BARACUDA VALLETTA

# COMMUNICATION ET DIVERTISSEMENT



Wi-Fi internet access



Satellite television

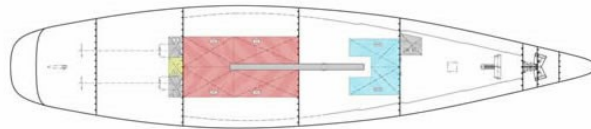


Streaming services



# BARACUDA VALLETTA

Deck plans



# BURGESS

# WORLD CLASS. WORLD WIDE.

<b>London</b> +44 20 7766 4300	<b>Monaco</b> +377 97 97 81 21	<b>New York</b> +1 212 223 0410	<b>Miami</b> +1 305 672 0150	<b>Singapore</b> +65 9665 8990	<b>Beverly Hills</b> +1 310 424 5112	<b>Palma</b> +34 971 495 413	<b>Athens</b> +30 210 967 1661
<b>Dubai</b> +971 4 425 5874	<b>Phuket</b> +66 7623 9739	<b>Hong Kong</b> +852 6496 2094	<b>Tokyo</b> +81 46 738 8612	<b>Sydney</b> +61 499 945 557	<b>Mumbai</b> +91 98211 67253	<b>Shanghai</b> +86 187 0898 6800	<b>Rio de Janeiro</b> +55 21 2553-3238
<b>Aspen</b> +1 970 710 2294							

La publicité de ce(s) navire(s) dans des publications imprimées, sur Internet ou sur tout autre support n'est pas autorisée sans l'autorisation écrite préalable de Burgess.  
Toutes les informations sont données de bonne foi et sont considérées comme exactes, mais elles ne peuvent être garanties.

Dernière mise à jour : 13 février 2025