

**B2**


---



B2


# SPÉCIFICATIONS.


 Prix demandé  
EUR 79 000 000


 Chantier  
2008 (refitted 2022), Abeking & Rasmussen,  
Germany

 Longueur  
85,6m

 Largeur  
12,4m


 Tirant d'eau  
3,5m

 Tonnage brut  
2 150

 Vitesse de croisière  
13,5 knots


 Vitesse maximale  
16,5 knots

 Autonomie  
6 690 nm

 Pavillon  
Cayman Islands

 Position  
West Mediterranean

 Classe  
Lloyds Register ⌘ 100A1 SSC Yacht (P) Mono G6  
⌘ LMC UMS


 Designer extérieur  
Reymond Langton Design


 Designer d'intérieur  
Reymond Langton/Brian Callahan


 Construction  
Hull - Steel, Superstructure - Aluminium, Deck -  
Teak

 Équipage  
26

 Invités  
24

 Cabines  
11 (11 × double, 2 × additional berths)

 Moteurs  
2 × 2 000hp Caterpillar

 Propulsion  
Twin screw diesel yacht

## Note

Not available for sale to US residents while in US waters.

[Voir le yacht sur le site](#)

[Regarder la vidéo du yacht](#)





B2



B2



B2



B2







B2



BURGESS

Discover the difference.  
[burgessyachts.com](http://burgessyachts.com)



B2



BURGESS

Discover the difference.  
[burgessyachts.com](http://burgessyachts.com)



B2

# APERÇU.

The 85.6m (280.8ft) B2 was delivered in 2009 by legendary German shipyard Abeking & Rasmussen with exterior design by Reymond Langton Design and brand-new interiors by Winch Design, fitted in 2022 at a cost of EUR 4,000,000. She has immaculate pedigree.

Delivered as one of A&R's highly successful 78m Series, she received a 7m (23ft) extension aft to accommodate a main deck aft pool and a feature beach club during an extensive 2019 refit.

The truly remarkable aspect of this yacht is its adaptability, its ability to accommodate so many different uses. As a pure multi-generational family yacht, she accommodates up to 26 guests and staff in 12 cabins with an elevator serving all guest decks.

The upper deck owner's suite has panoramic views and there is a VIP suite on the same deck. Other guest accommodation across main and lower decks can be retained for family use or, should you choose to operate her commercially (she is charter compliant), converted into meeting areas, media rooms, gym, library, cinema, wellness centre or any other facility.

Her extensive deck space includes a large sun deck with a raised jacuzzi surrounded by sunpads forward offering both privacy and excellent views. Two deck pods contain a shower to port and the elevator to starboard. Aft is a large versatile space with a bar and buffet, providing options for sun lounging, exercise or entertainment with optional shade from awnings and inside the superstructure is a massage room and day head.

There is open-air dining and a sun lounge area on the bridge deck aft, again with bar and buffet and abundant deck space presenting a range of activity options. The upper deck aft also has a bar and buffet, continuing the theme of versatility, with a sun lounge aft.

Alongside several lounge seating areas around the space and a bar, the key feature on the vast main deck aft is a huge glass bottomed infinity pool that, together with the outdoor cinema, creates a hub for family activities during the day and night.

Steps lead down to the swim platform and the spectacular lower deck beach club, lined with teak, shimmering with light from the pool above and open on three sides offering an immediate connection to the sea. Tenders and toys are stowed in a full-beam garage just forward of the beach club, with shell doors either side for launch and recovery.

Interior social spaces include the saloon on the main deck, a circular dining room with 180-degree views on the upper deck aft in addition to the open-air dining on the bridge deck aft. A sky lounge on the bridge deck has excellent views and provides a comfortable sanctuary for relaxation with family and friends.

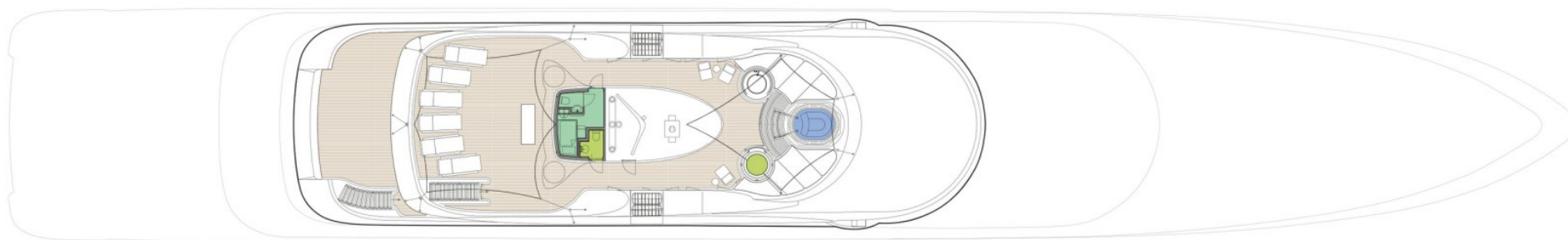
Twin 2,000hp Caterpillar diesel engines give her a top speed of 16.5 knots, a cruising speed of 15 knots and a transatlantic range of 6,690nm at 13.5 knots.

## Principales caractéristiques

## Annexes

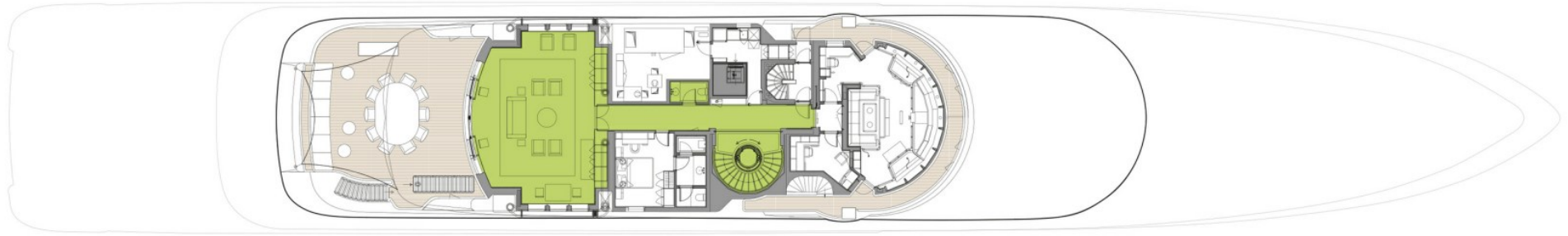
2 x custom 2008 YachtWerft Mayer (20.25ft) tenders, 1 x Pirelli Pzero T75 rib, 1 x rescue Zodiac tender

# SUN DECK



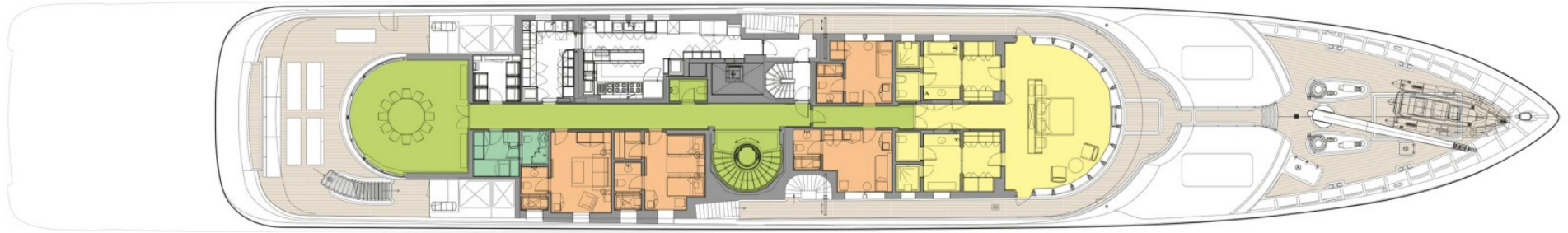
 GUEST AREAS  OWNER'S SUITE  VIP SUITE  GUEST CABINS  STAFF CABINS  MASSAGE SUITE  JACUZZI  POOL

# BRIDGE DECK



 GUEST AREAS  OWNER'S SUITE  VIP SUITE  GUEST CABINS  STAFF CABINS  MASSAGE SUITE  JACUZZI  POOL

# UPPER DECK



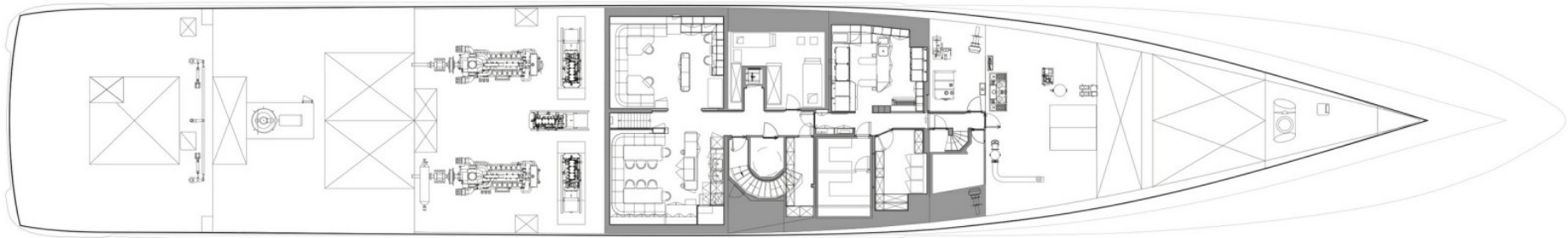
 GUEST AREAS  OWNER'S SUITE  VIP SUITE  GUEST CABINS  STAFF CABINS  MASSAGE SUITE  JACUZZI  POOL

# MAIN DECK



■ GUEST AREAS   ■ OWNER'S SUITE   ■ VIP SUITE   ■ GUEST CABINS   ■ STAFF CABINS   ■ MASSAGE SUITE   ■ JACUZZI   ■ POOL

# TANK DECK



 GUEST AREAS  OWNER'S SUITE  VIP SUITE  GUEST CABINS  STAFF CABINS  MASSAGE SUITE  JACUZZI  POOL

# BURGESS

# WORLD CLASS. WORLD WIDE.

London	Monaco	New York	Miami	Singapore	Beverly Hills	Palma	Athens
+44 20 7766 4300	+377 97 97 81 21	+1 212 223 0410	+1 305 672 0150	+65 9665 8990	+1 310 424 5112	+34 971 495 413	+30 210 967 1661
Dubai	Phuket	Hong Kong	Tokyo	Sydney	Mumbai	Shanghai	
+971 4 425 5874	+66 7623 9739	+852 6496 2094	+81 46 738 8612	+61 499 945 557	+91 98211 67253	+86 187 0898 6800	

La publicité de ce(s) navire(s) dans des publications imprimées, sur Internet ou sur tout autre support n'est pas autorisée sans l'autorisation écrite préalable de Burgess.  
Toutes les informations sont données de bonne foi et sont considérées comme exactes, mais elles ne peuvent être garanties.

Dernière mise à jour : 01 mai 2024