

B2



B2

APERÇU.

With her unrivalled outside entertaining space, spread over five decks and her 85.6m (280.8ft) length, B2 offers you, your family and friends a unique holiday experience.

Perhaps you'd like to relax while swimming lengths of B2's glass-bottomed swimming pool or in the vast beach club beneath it; enjoying drinks while relaxing on the fold-down sea terraces, before diving off for a swim or for some time on the yacht's paddleboards or even to explore underwater with B2's range of electric water scooters.

On board B2, high above the sea, is the sun deck jacuzzi and sunpad space that gives you a commanding view over where your captain has chosen. It's a breeze to reach the sun deck, either take the beautiful spiral staircase or the elevator from the deck you are on.

For time ashore, B2 has a fast 12-person tender enabling everyone staying on board to go ashore in one trip. But why leave, when everything you could wish for is on board. Be that a massage, time in the gym or delight in the mouth-watering creations presented fresh from B2's galley. Whether you'd prefer to dine under the stars on the bridge deck's formal al fresco dining area (or the informal dining area on the upper aft deck) or in the comfort of B2's formal dining area on the upper deck the choice is yours, B2's 26 crew members will ensure all your needs are catered for.

B2 can host 12 guests in 14 luxury suites (12 double berths and two twin-berth suites) giving you a full range of options, no matter how your party is organised. Her sumptuous modern and neutrally decorated suites can be found on four decks. But it's the upper deck master suite that steals the show; its forward-facing windows create a 180-degree vista to be enjoyed at any time. The suite also has separate en suite marble-lined his and hers bathrooms. For those with children, there is a children's/nanny cabin on this deck, as well as a further twin-berth suite.

On the main aft deck, there is relaxing seating in the area that converts to an open-air cinema with a drop-down projector screen. The lavish main saloon, too, can be converted into an amazing cinema space. Forward of the saloon, there are more wonderful suites for your guests and the lobby area. Your guests can also take the elevator or the stairs to the lower deck suites.

Your time on board B2 will be a holiday for you and your guests like no other you've all experienced.

Principales caractéristiques

Spa facilities: massage room

Beach Club at sea level

Exercise equipment

Elevator to all decks

Jacuzzi on the sun deck

Pool on the main deck

Zero speed stabilisers to reduce any rolling motion while at anchor

Flexible cabin configurations

B2

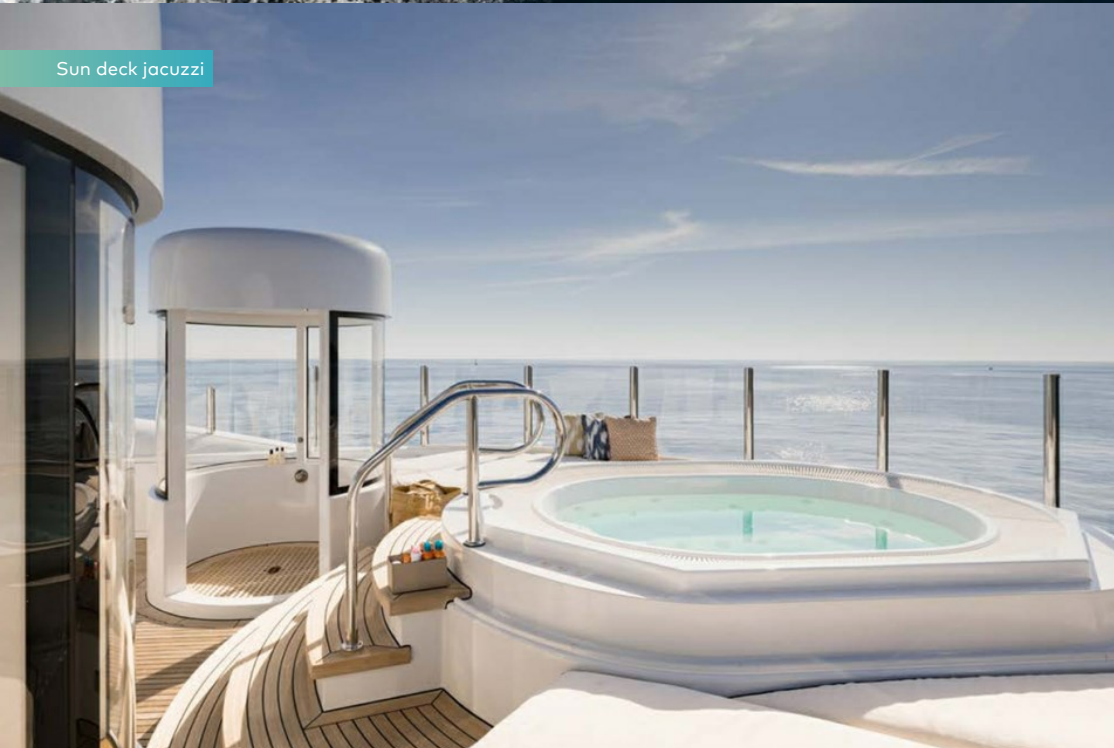
Cruising



At anchor



Sun deck jacuzzi



Sun deck jacuzzi



BURGESS

Discover the difference.
burgessyachts.com



B2

Sun deck aft



Sun deck aft



Bridge deck aft



Foredeck



B2

Foredeck



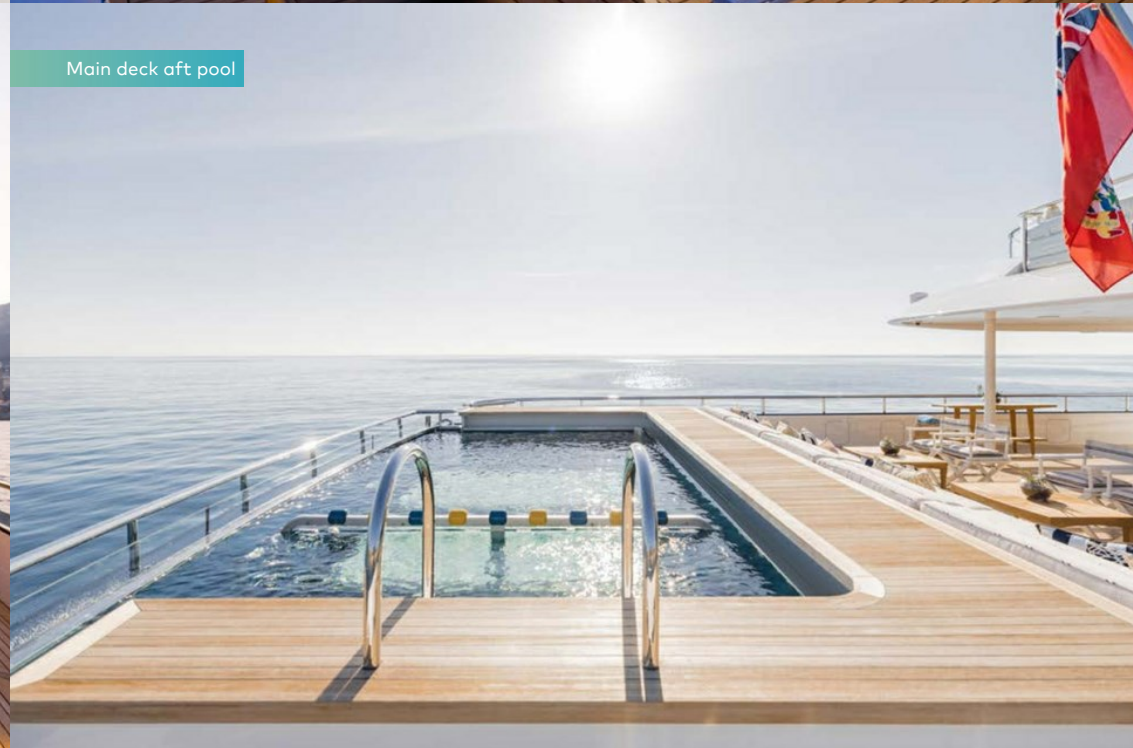
Main deck aft



Main deck aft



Main deck aft pool



BURGESS

Discover the difference.
burgessyachts.com



B2

Beach club



Beach club



Beach club



Beach club



B2

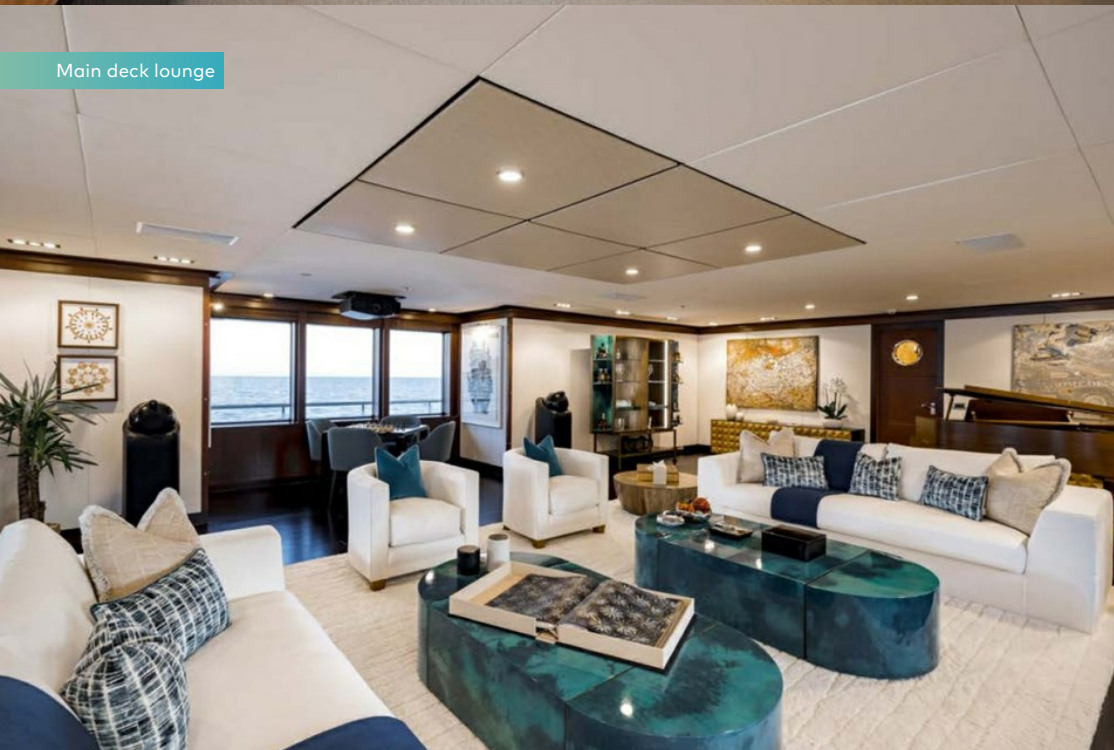
Lower deck cinema



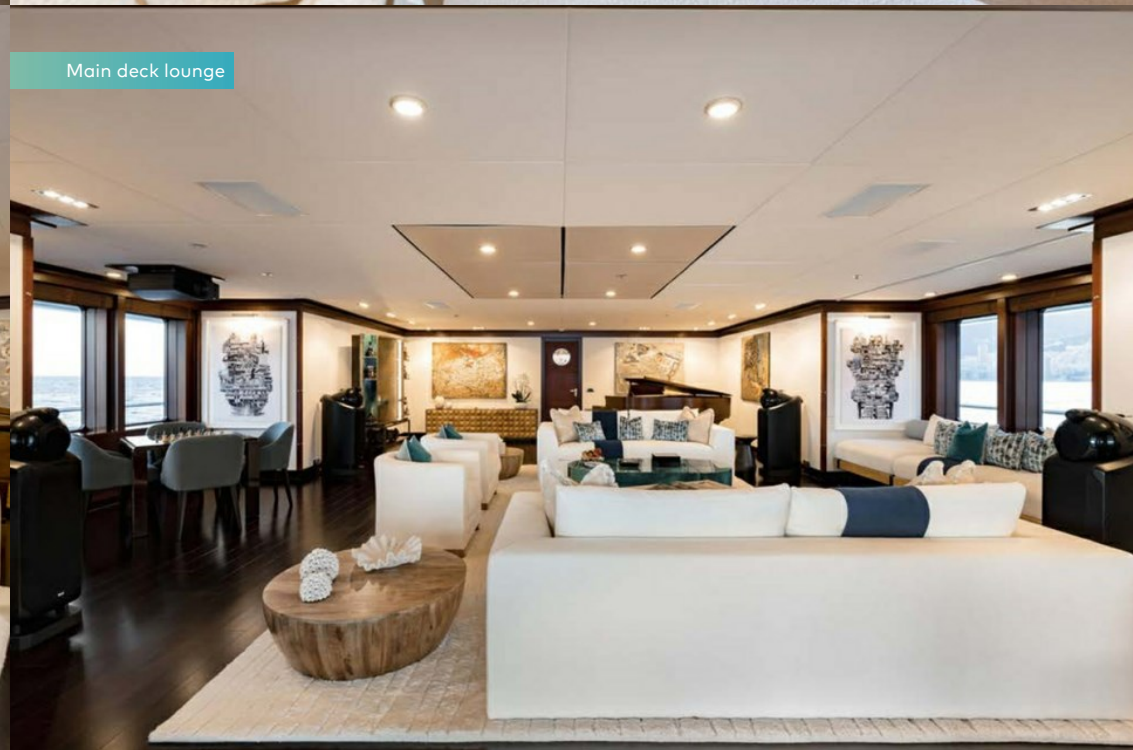
Lower deck cinema



Main deck lounge



Main deck lounge

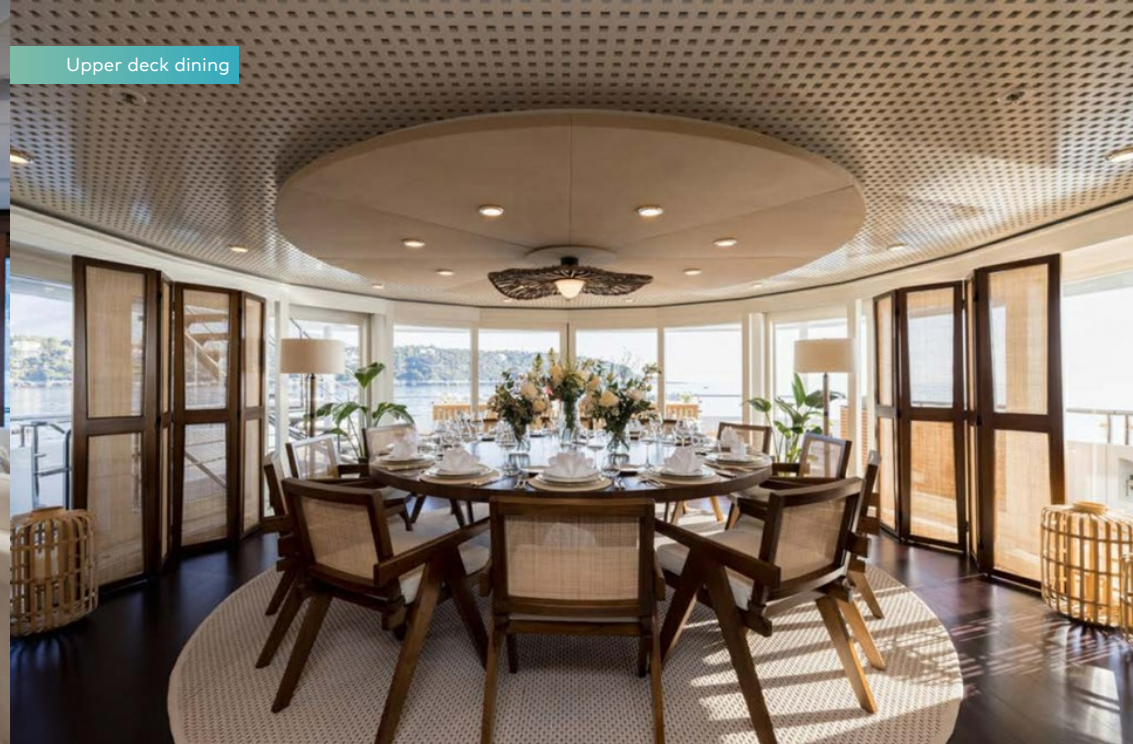


B2

Main deck lounge



Upper deck dining



Upper deck dining



Upper deck massage room



B2

Upper deck gym



Sky lounge



Sky lounge



Sky lounge



B2

Master cabin - Upper deck



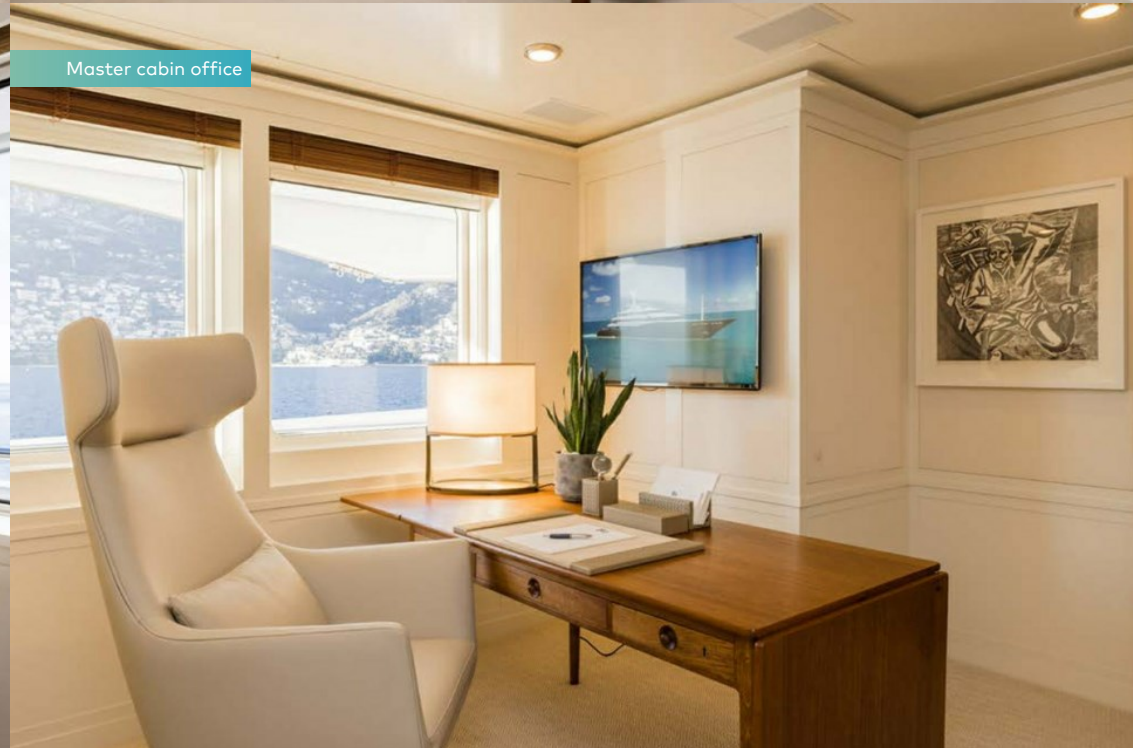
Master cabin - Upper deck



Master cabin - Upper deck



Master cabin office



B2

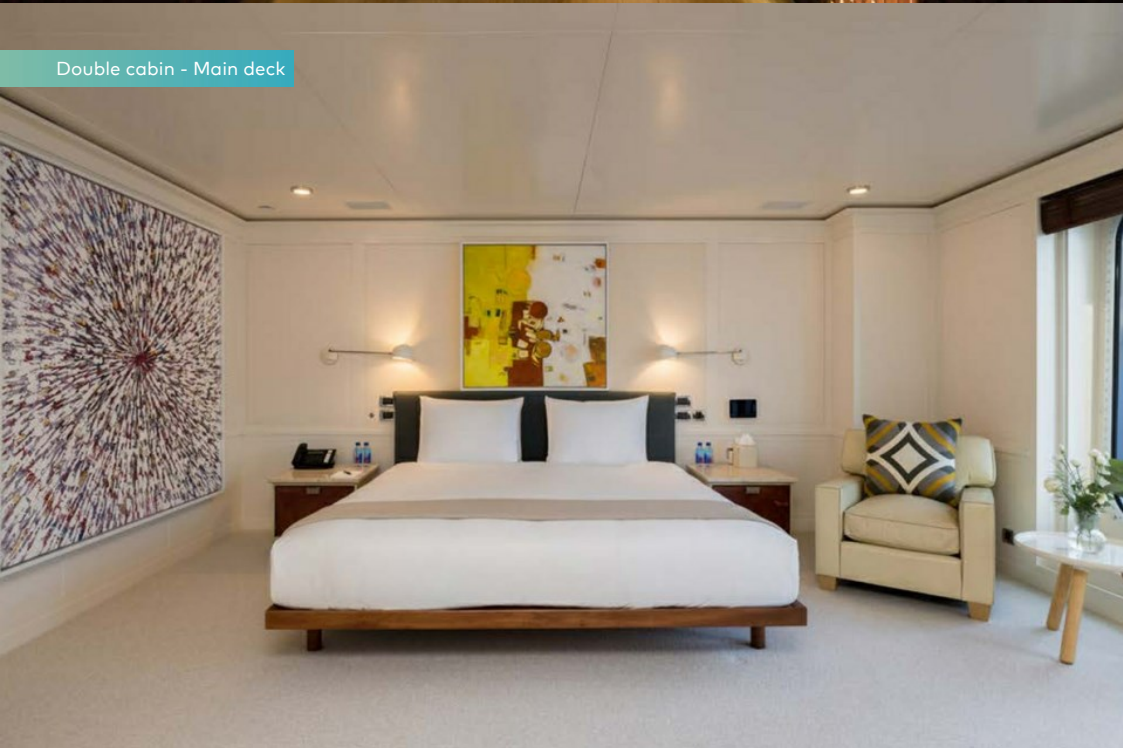
Master bathroom en suit



Master bathroom en suit



Double cabin - Main deck



At anchor
















B2

At anchor



B2

SPÉCIFICATIONS.

 Longueur 85,6m	 Invités 12
 Chantier 2008 (refitted 2022), Abeking & Rasmussen, Germany	 Nb de cabines invités 11 (11 × double, 2 × additional berths)
 Designer d'intérieur Reymond Langton/Brian Callahan	 Équipage 26
 Largeur 12,4m	Voir le yacht sur le site Regarder la vidéo du yacht
 Tirant d'eau 3,5m	
 Tonnage brut 2 150	
 Vitesse de croisière 13,5 knots	
 Vitesse maximale 16,5 knots	
 Consommation de carburant en vitesse de croisière 528 litres par heure	
 Moteurs 2 × 2 000hp Caterpillar	



Annexes & jeux nautiques



4 x Tenders



1 x Deck jacuzzi



Pool



3 x Waverunners



3 x SeaBobs



6 x Underwater scooters



1 x eFoil



4 x Kayaks



2 x Stand up paddleboards



Pedal board



Wakeboard



Waterskis



Inflatable tows



Snorkelling gear



Air drone

Remise en forme & bien-être



Free weights



Multi gym



Training bench

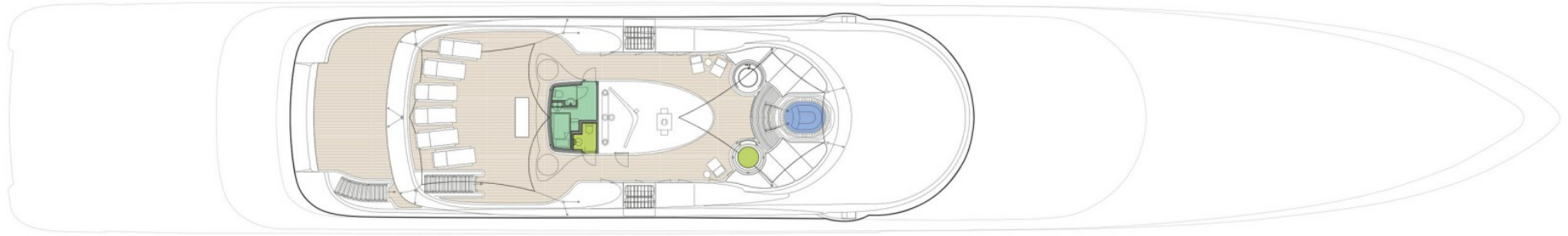


Treadmill



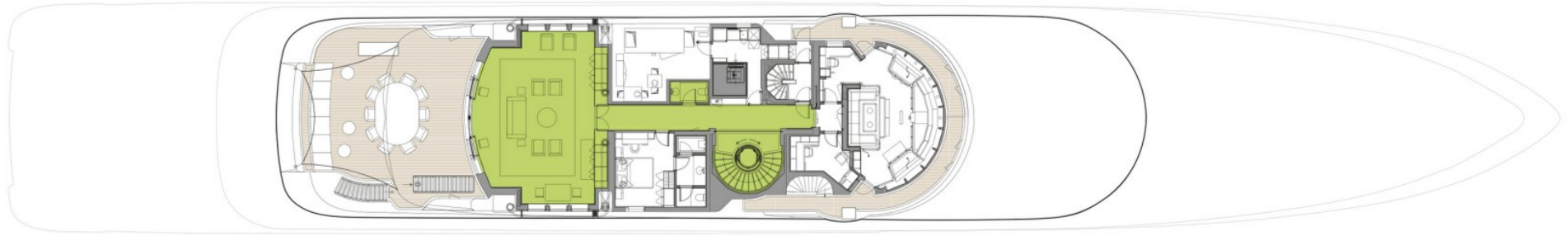
Upright stationary bike

SUN DECK



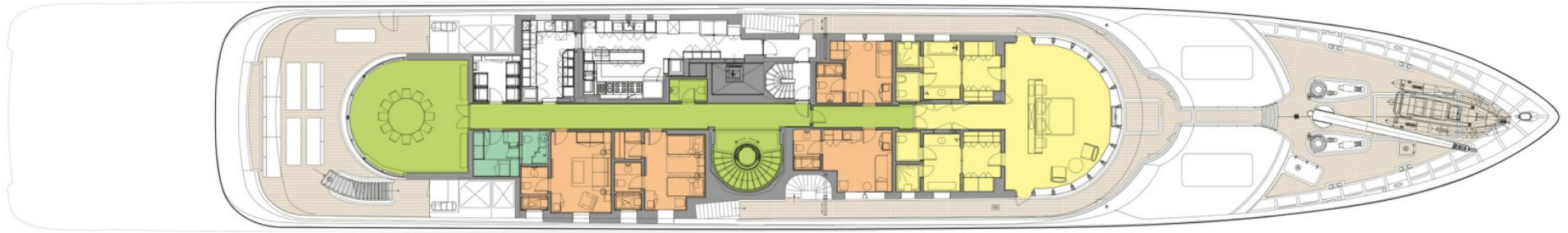
 GUEST AREAS  OWNER'S SUITE  VIP SUITE  GUEST CABINS  STAFF CABINS  MASSAGE SUITE  JACUZZI  POOL

BRIDGE DECK



 GUEST AREAS  OWNER'S SUITE  VIP SUITE  GUEST CABINS  STAFF CABINS  MASSAGE SUITE  JACUZZI  POOL

UPPER DECK



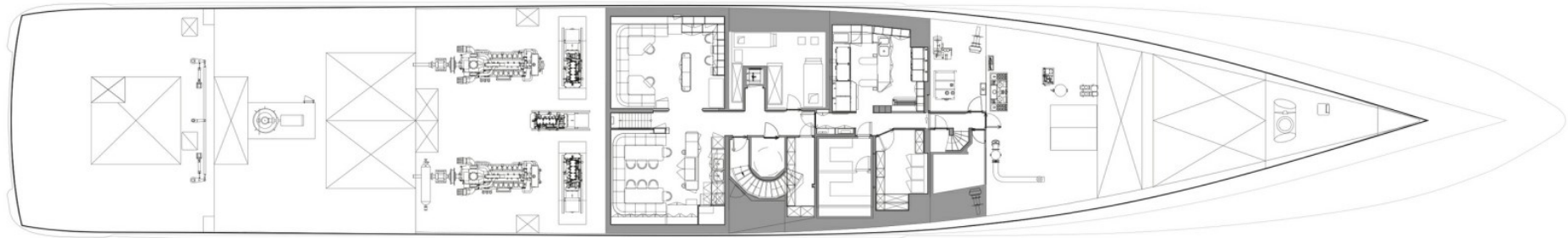
GUEST AREAS OWNER'S SUITE VIP SUITE GUEST CABINS STAFF CABINS MASSAGE SUITE JACUZZI POOL

MAIN DECK



■ GUEST AREAS ■ OWNER'S SUITE ■ VIP SUITE ■ GUEST CABINS ■ STAFF CABINS ■ MASSAGE SUITE ■ JACUZZI ■ POOL

TANK DECK



 GUEST AREAS  OWNER'S SUITE  VIP SUITE  GUEST CABINS  STAFF CABINS  MESSAGE SUITE  JACUZZI  POOL

BURGESS

WORLD CLASS. WORLD WIDE.

London	Monaco	New York	Miami	Singapore	Beverly Hills	Palma	Athens
+44 20 7766 4300	+377 97 97 81 21	+1 212 223 0410	+1 305 672 0150	+65 9665 8990	+1 310 424 5112	+34 971 495 413	+30 210 967 1661
Dubai	Phuket	Hong Kong	Tokyo	Sydney	Mumbai	Shanghai	
+971 4 425 5874	+66 7623 9739	+852 6496 2094	+81 46 738 8612	+61 499 945 557	+91 98211 67253	+86 187 0898 6800	

La publicité de ce(s) navire(s) dans des publications imprimées, sur Internet ou sur tout autre support n'est pas autorisée sans l'autorisation écrite préalable de Burgess.
Toutes les informations sont données de bonne foi et sont considérées comme exactes, mais elles ne peuvent être garanties.

Dernière mise à jour : 01 mai 2024